

Memorandum



CITY OF DALLAS

DATE June 6, 2008

TO Members of the Transportation and Environment Committee:
Linda Koop (Chair), Sheffie Kadane (Vice Chair), Jerry R. Allen, Carolyn R. Davis, Vonciel Jones Hill, Angela Hunt, Pauline Medrano and Ron Natinsky

SUBJECT Presentations for the Joint Meeting with the DART Board

Attached are the "Status Report on Green Line LRT Construction" and "Status Report on Downtown Transit Issues: D2 Study" briefings that will be presented to you on Monday, June 9, 2008 at the Transportation and Environment Committee Meeting.

Please contact me if you need additional information.

A handwritten signature in black ink, appearing to read 'R. Miguez'.

Ramon F. Miguez, P.E.
Assistant City Manager

c: The Honorable Mayor and Members of the City Council
Mary K. Suhm, City Manager
Thomas P. Perkins, Jr., City Attorney
Deborah Watkins, City Secretary
Craig Kinton, City Auditor
Judge Jay Robinson, Judiciary
Ryan S. Evans, First Assistant City Manager
David O. Brown, Interim Assistant City Manager
Jill A. Jordan, P.E., Assistant City Manager
A.C. Gonzalez, Assistant City Manager
David Cook, Chief Financial Officer
Jeanne Chipperfield, Interim Director, Office of Financial Services
Helena Stevens, Assistant to the City Manager
Edward Scott, Interim Director, Office of Financial Services

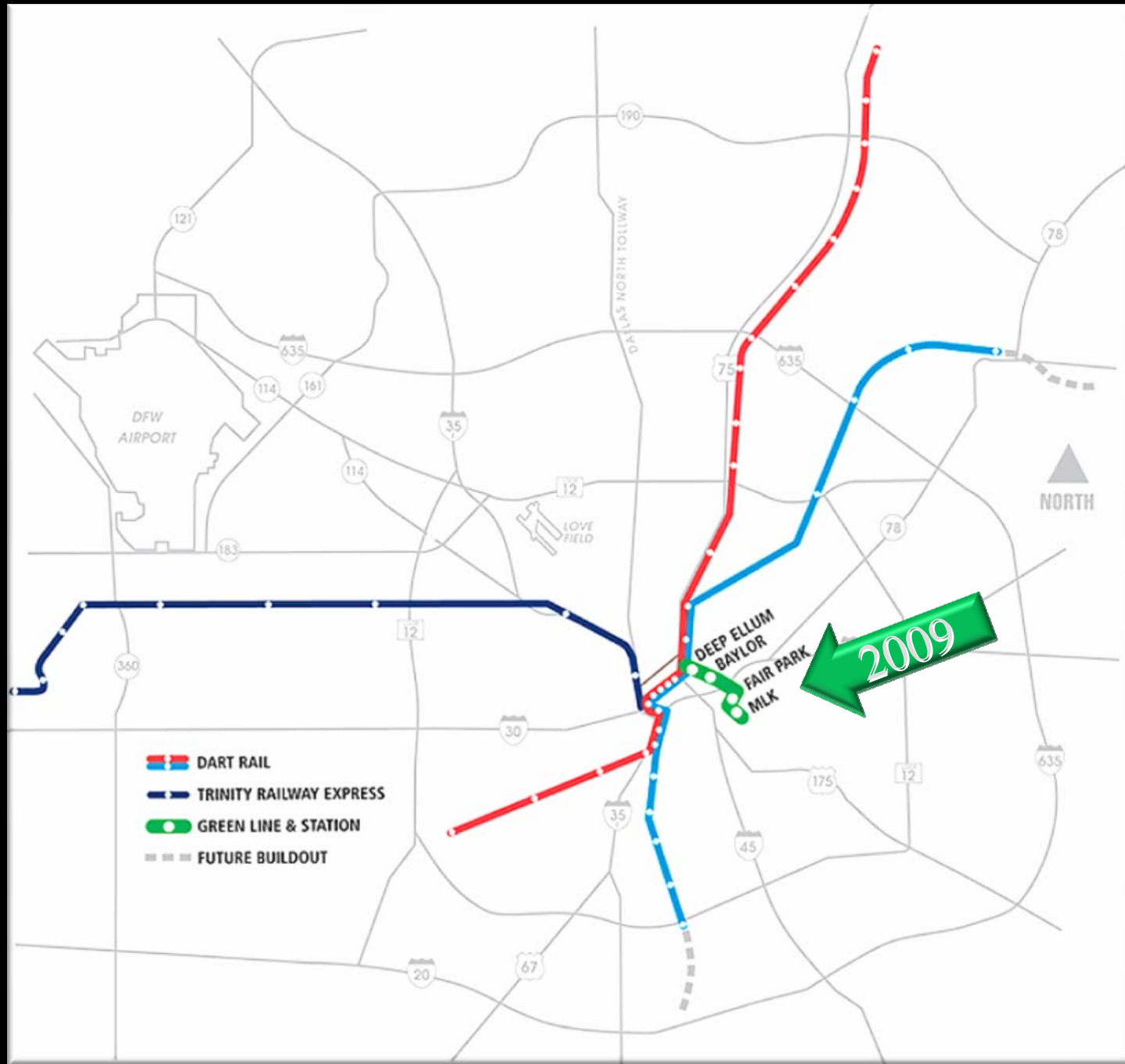


25 Years In Motion



**City of Dallas
Transportation Committee
Meeting
Green Line Expansion Update**

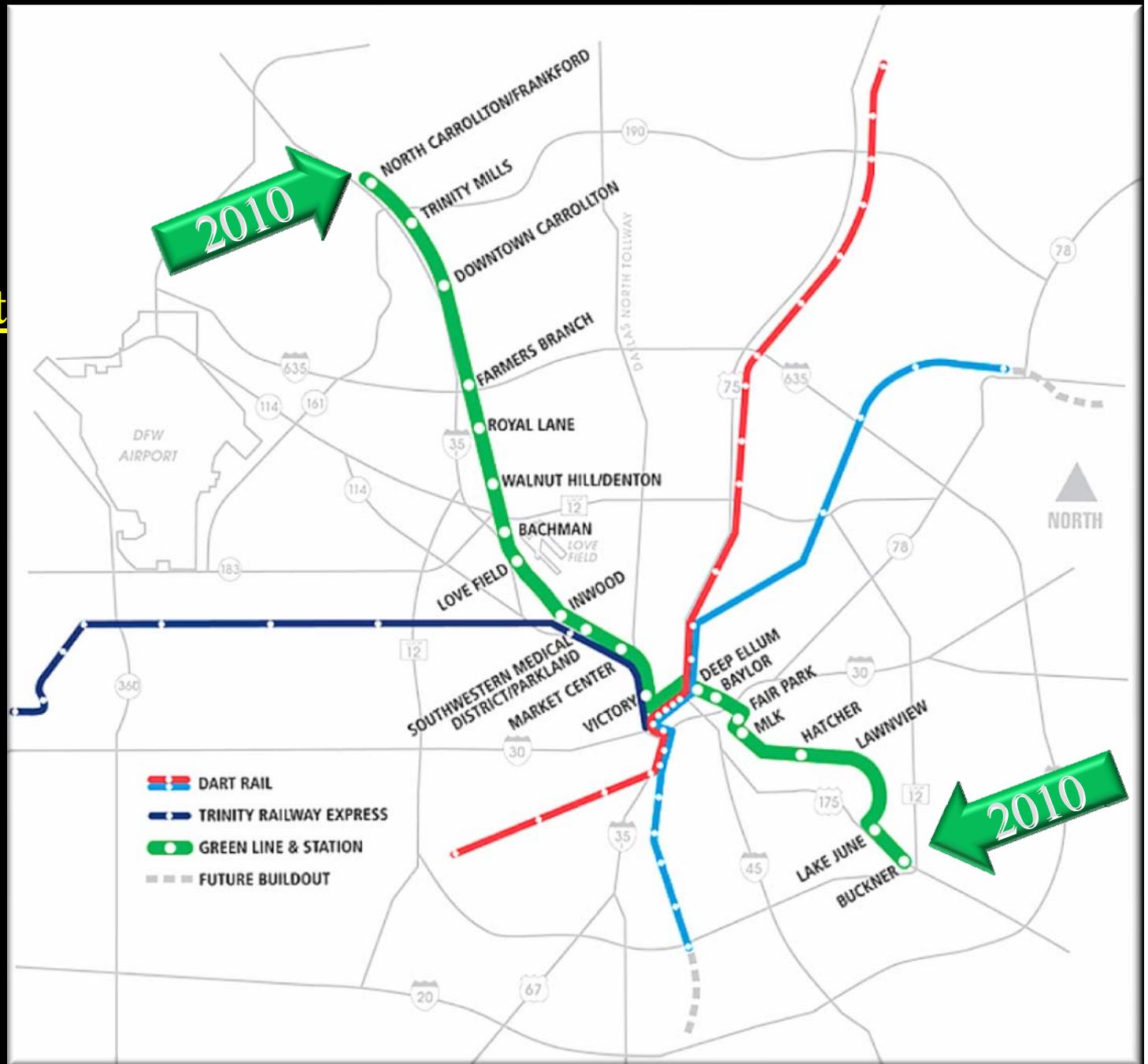
Gary Thomas
DART President/Executive Director
June 9, 2008



Program Budget
\$1.8 Billion

Spent to Date
\$650 Million

Trending within
budget and on
schedule



Green Line Construction



- Daily average 2,000 workers
 - 95% local residents
- \$8.1 Billion in economic activity
- 3 major contracts
 - Total value - \$1 Billion
 - Paid to date - \$300 Million
 - 35% complete to-date
- Safety Rates
 - Workforce hours to date - 3,018,467
 - DART Recordable 1.86 (National 7.6)
 - DART Lost Time 0.20 (National 5.05)
(DART Goal 0.35)

Current Construction Challenges

- State Fair coordination for September 2008
 - Started coordination sessions in preparation
 - Roads are anticipated to be in final configuration in front of fairgrounds

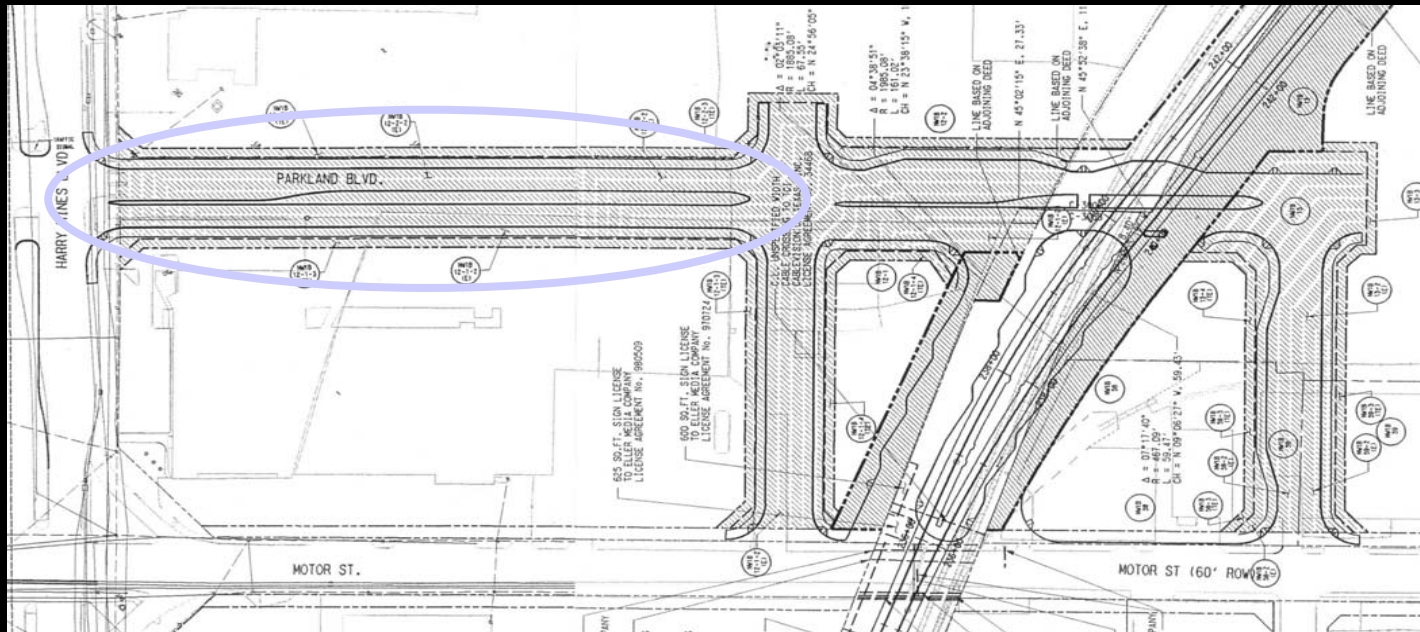




Fair Park Station

Current Challenges

- Parkland Hospital Property for Station Circulator Road
 - Section between Harry Hines & Redfield currently
 - Discussions are ongoing with Parkland Hospital



Modification of LRV's

- DART is updating its fleet of 115 light rail vehicles (LRV) by inserting a new, low-floor insert between the existing sections of the vehicle (C-unit) adding seating capacity and improving access through level boarding.
- 1st SLRV Retrofit Completed
- SLRV in Revenue Service by Mid-June



C-Unit Shipping Status

- 7 C-Unit Shipments from Japan to Date
- 18 C-Units Total
- Approximately 20 Shipments Remaining



CBD Level Boarding Modifications



St. Paul Station
Completed and
Re-opened February
2008

St. Paul Station

CBD Level Boarding Modifications

Pearl Station

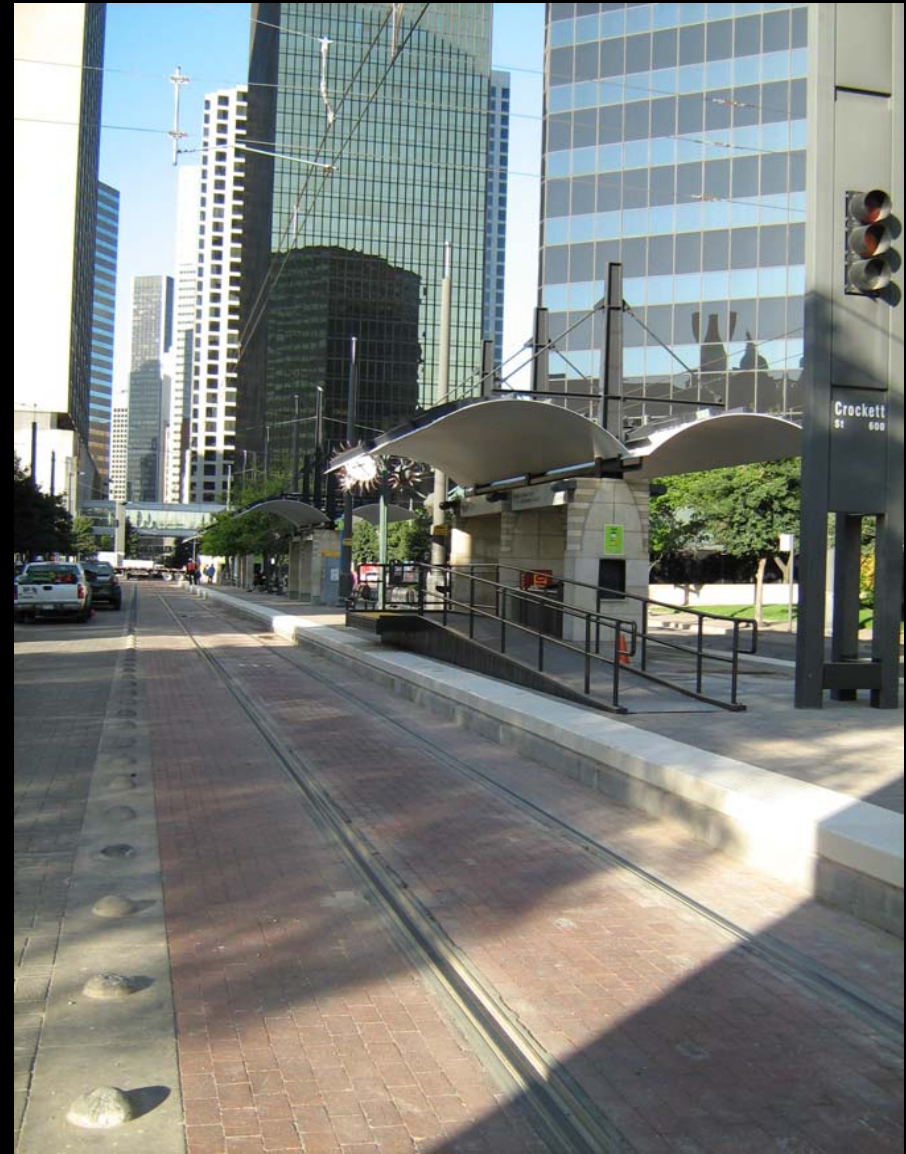
Completed and Re-opened
April 2008

Akard Station

Under Construction and
Scheduled to Re-open July 7,
2008

West End Station

Scheduled to Start Construction
August 2008



Pearl Station

Outlying Stations - Level Boarding

Pilot project

- Anticipated to complete June 2008
- Remaining stations retrofitting starts Spring 2009 and completes December 2010



Morrell Station



25 Years In Motion