

PLUMBING AND MECHANICAL
INTERPRETATION MANUAL



CODE: 2003 IRC

DATE:

CODE REF: P2709.1

12/5/2006

SUBJECT: Shower Threshold (1 OF 2)

Question: What is the minimum height for a shower threshold according the IRC

Answer: IRC requires a threshold showers a 2" minimum height. When a shower does not have a threshold that is not 2" then the exception is to apply the ICC/ANSI A117.1 standard. Residential construction is not required to comply with ADA/TAS requirements. However if the builder/homeowner wishes to use this standard for sizing they may do so.

P2709.1 Construction.

Shower receptors shall have a finished curb threshold not less than 1 inch (25.4 mm) below the sides and back of the receptor. The curb shall be not less than 2 inches (51 mm) and not more than 9 inches (229 mm) in depth when measured from the top of the curb to the top of the drain. The finished floor shall slope uniformly toward the drain not less than one-fourth unit vertical in 12 units horizontal (2-percent slope) nor more than 0.5 inch (12.7 mm), and floor drains shall be flanged to provide a water-tight joint in the floor.

Exception: Showers designed to comply with ICC/ANSI A117.1.

608 Shower Compartments

608.1 General.

Accessible shower compartments shall comply with Section 608.

608.2 Size and Clearances.

608.2.1 Transfer-Type Shower Compartments.

Transfer-type shower compartments shall be 36 inches (915 mm) wide by 36 inches (915 mm) deep inside finished dimension, measured at the centerpoint of opposing sides, and shall have a minimum 36 inches (915 mm) wide entry on the face of the shower compartment. The clearance in front of the compartment shall be 48 inches (1220 mm) long minimum measured from the control wall and 36 inches (915 mm) wide minimum.

Fig. 608.2.1
Transfer-Type Shower Compartment 36

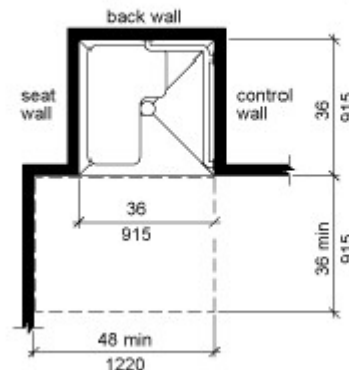


Fig. 608.2.1 Transfer-Type Shower Compartment 36

PLUMBING AND MECHANICAL
INTERPRETATION MANUAL



CODE: 2003 IRC

DATE:

CODE REF: P2709.1

12/5/2006

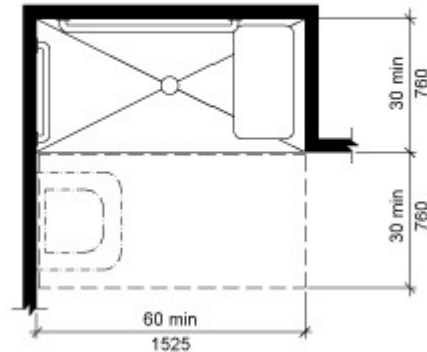
SUBJECT: Shower Threshold

(2 of 2)

608.2.2 Standard Roll-In-Type Shower Compartment.

Roll-in-type shower compartments shall be 30 inches (760 mm) wide minimum by 60 inches (1525 mm) deep minimum, clear inside dimension, measured at the center-point of opposing sides and shall have a minimum 60 inches (1220 mm) wide entry on the face of the shower. A 30 inches (760 mm) wide minimum by 60 inches (1525 mm) long minimum clearance shall be provided adjacent to the open face of the shower compartment. A lavatory complying with Section 606 shall be permitted at the end of the clear space, opposite the shower compartment side where shower controls are positioned.

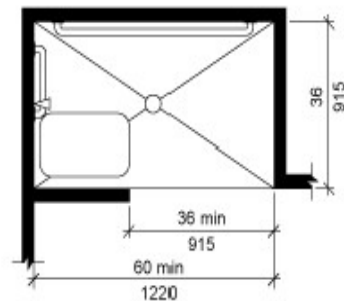
Fig. 608.2.2
Standard Roll-In-Type Shower Compar



608.2.3 Alternate Roll-In-Type Shower Compartment.

Alternate roll-in shower compartments shall be 36 inches (915 mm) wide and 60 inches (1220 mm) deep minimum. A 36 inch (915 mm) wide minimum entry shall be provided at one end of the long side of the compartment. The shower unit and controls shall be mounted on the end wall furthest from the compartment entry.

Fig. 608.2.3
Alternate Roll-In-Type Shower Compartment



608.7 Thresholds.

Shower compartment thresholds shall be 1/2 inch (13 mm) **high maximum** and shall comply with Section 303.

SIGNATURE: *Lonnie Erwin,*

Chief Plumbing and Mechanical Inspector
City of Dallas