

DALLAS ANIMAL SERVICES

ANNUAL REPORT 2012

Calendar Year

★
2012 Live
Release Rate

★
3,554
2012 Transfers
NEW RECORD!

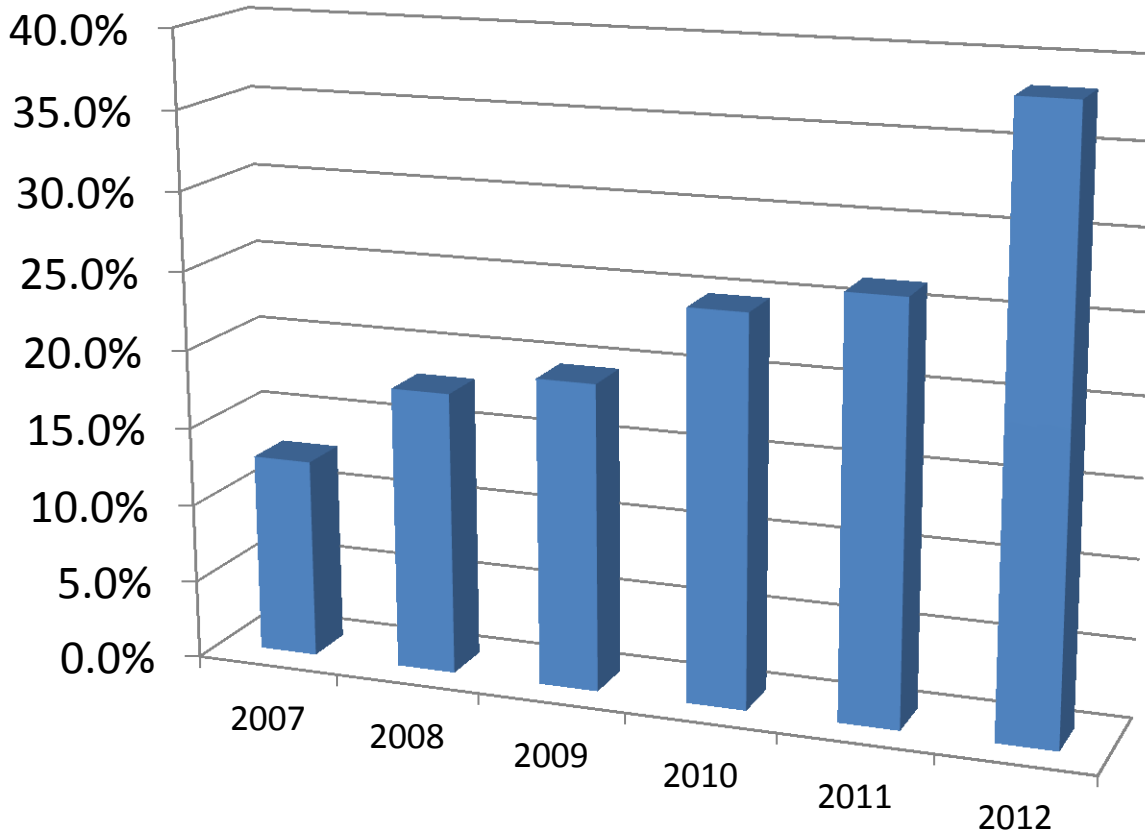
★
2012
5,399
ADOPTIONS
A NEW RECORD!

38.3%
A new record!



Live Release Rates

Calendar Year 2007-2012 Comparison



Live Release Rate
2012 - 38.3%*

***A New Record!**

2011 - 26.4%

2010 - 24.7%

2009 - 19.5%

2008 - 18.0%

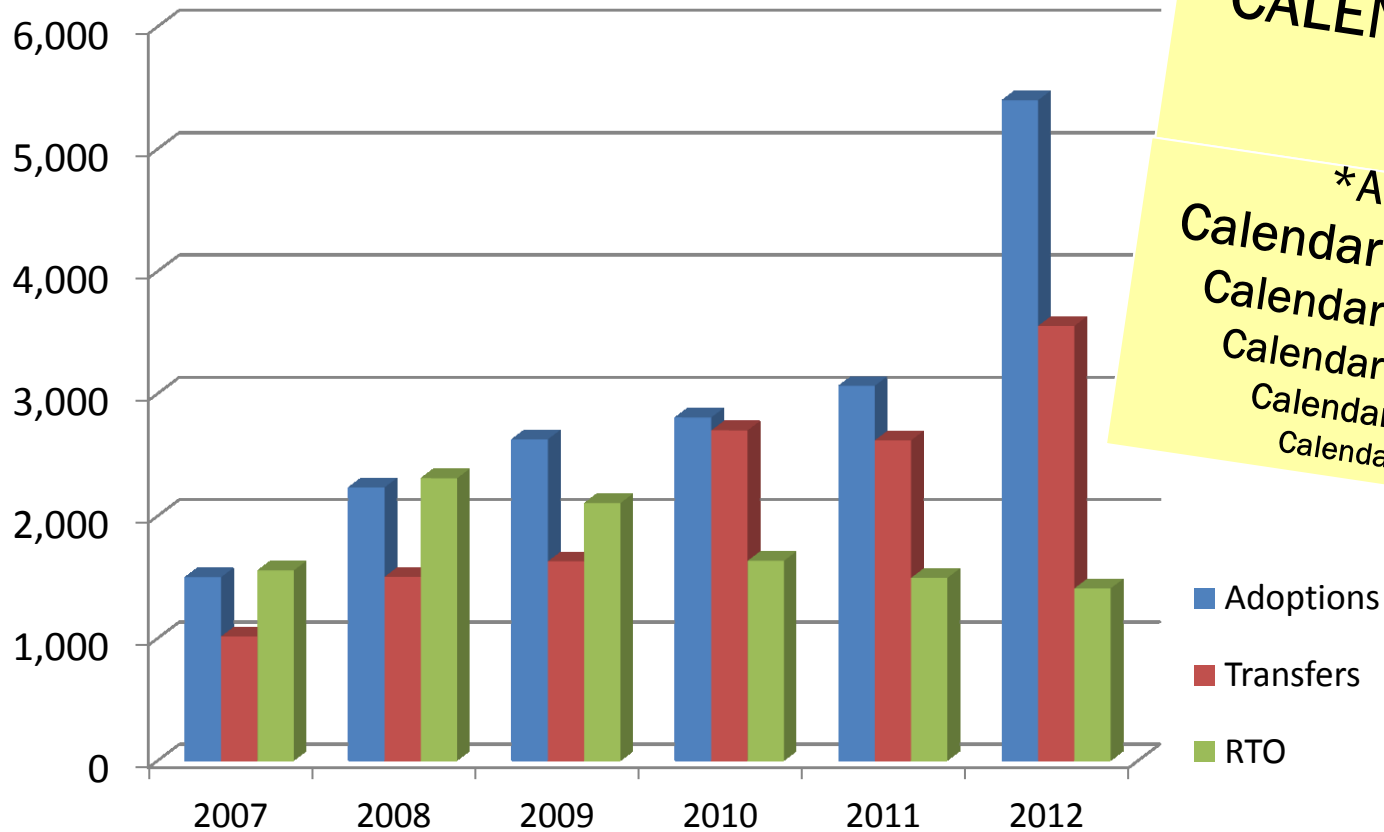
2007 - 12.7%

■ Live Release Rate

* 36.6% Maddies/ASPCA Live Release Rate is calculated by dividing total live outcomes (adoptions, outgoing transfers, return to owner/guardian) by total outcomes less unhealthy owner requested euthanasia.

Adoptions

Calendar Year 2007-2012 Comparison



CALENDAR YEAR 2012

5,399*

***A NEW RECORD!**

Calendar Year 2011 - 3,064

Calendar Year 2010 - 2,806

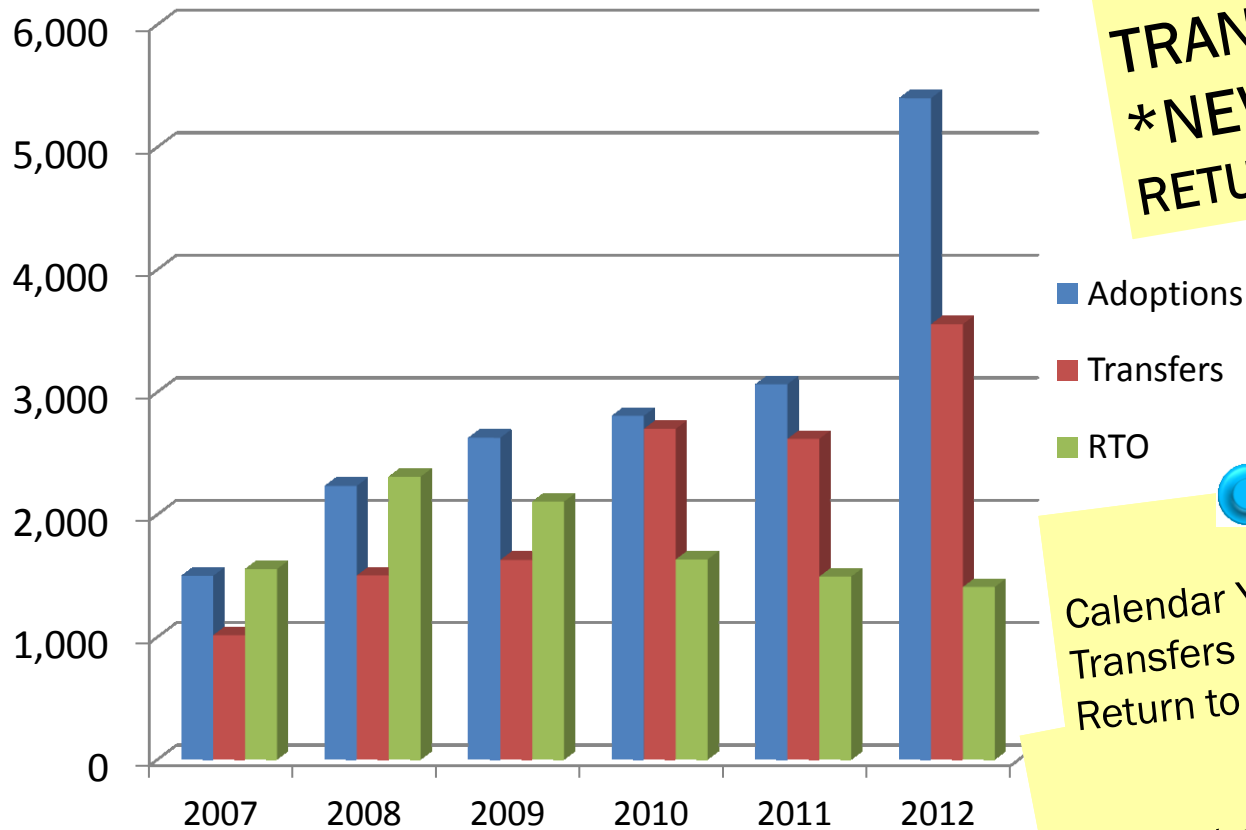
Calendar Year 2009 - 2,627

Calendar Year 2008 - 2,234

Calendar Year 2007 - 1,500

Transfers & Return to Owner

Calendar Year 2007-2012 Comparison



CALENDAR YEAR 2012:
TRANSFERS 3,554*
***NEW RECORD**
RETURN TO OWNER 1,409

Calendar Year 2011:
Transfers 2,618
Return to Owner 1,494

Calendar Year 2010:
Transfers 2,700
Return to Owner 1,634

Calendar Year 2009:
Transfers 1,630
Return to Owner 2,106

Calendar Year 2008:
Transfers 1,503
Return to Owner 2,309

Calendar Year 2007:
Transfers 1,016
Return to Owner 1,555

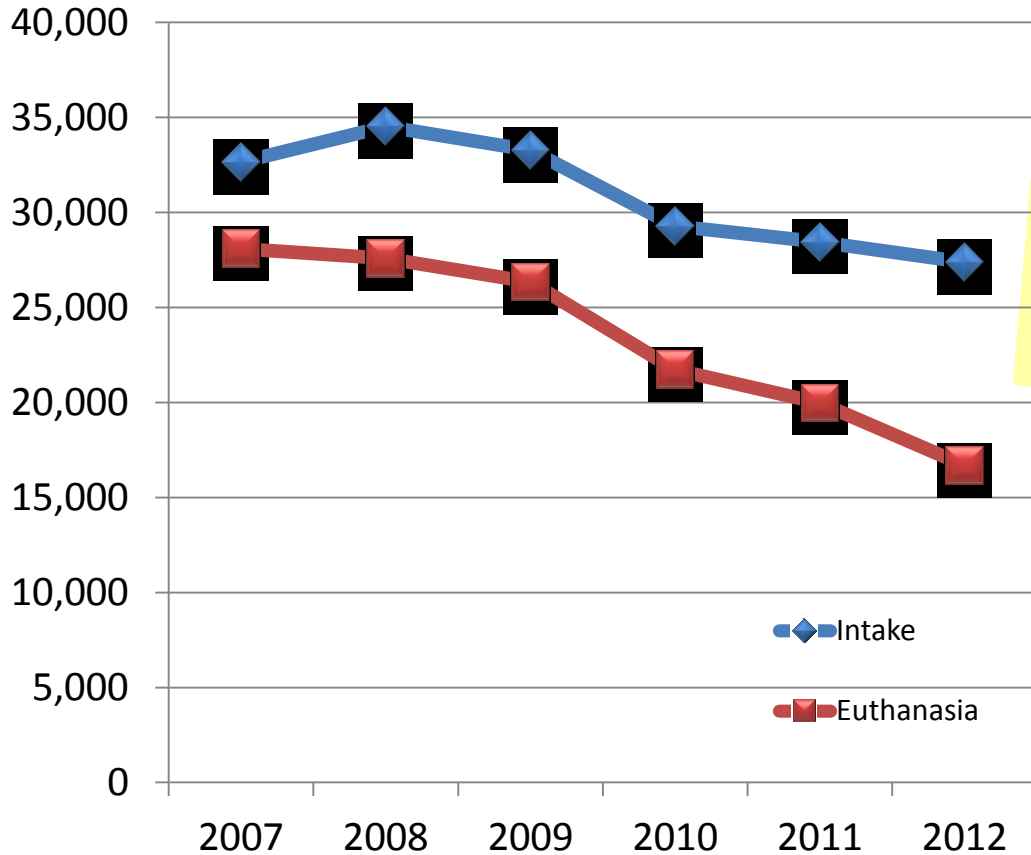
Adoptions, transfers and returns to owner are all part of calculating live release rates. Innovative shelter programs and community engagement have continued to positively impact our live release rate.

Source: City of Dallas Animal Services. All statistics include dogs and cats only.

Intake & Euthanasia

Calendar Year 2007-2012 Comparison

40%
Decrease
In Euthanasia
2007 to 2012



INTAKE:
Calendar Year 2012
27,375
Calendar Year 2011 - 28,447
Calendar Year 2010 - 29,285
Calendar Year 2009 - 33,276
Calendar Year 2008 - 34,521
Calendar Year 2007 - 32,647

EUTHANASIA:
Calendar Year 2012
16,681 *Record Low
Calendar Year 2011 - 19,976
Calendar Year 2010 - 21,729
Calendar Year 2009 - 26,332
Calendar Year 2008 - 27,577
Calendar Year 2007 - 28,095

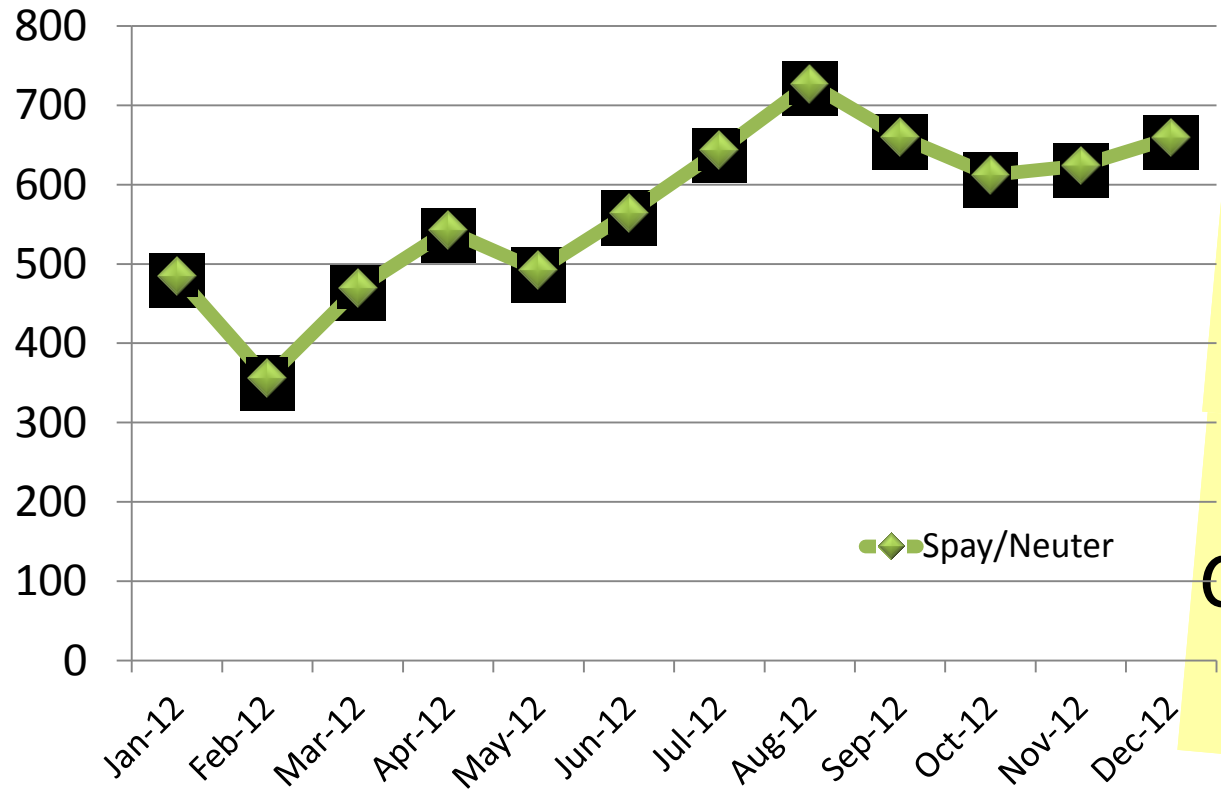
Aggressive spay/neuter efforts and resources for our residents are paying off. Intake numbers continue to decrease, as do euthanasia numbers.

Source: City of Dallas Animal Services. All statistics include dogs and cats only.

Spay & Neuter Surgeries

Calendar Year 2012 Spay/Neuter Surgeries at DAS

6,833
Total



2012
SPAY/NEUTER
SURGERIES:
DAS Pets - 5,374
OUTREACH - 1,459

Aggressive spay/neuter efforts and resources for our residents are paying off. As Spay/Neuter services increase, Intake numbers continue to decrease, as do euthanasia numbers.

Source: City of Dallas Animal Services. All statistics include dogs and cats only.

OUR COMMUNITY

By The Numbers

76

The average number of animals we took in every day during December!

27,375

The number of dogs and cats we took in last year.

53,666

The number of calls for service we answered last year.

342.5

The number of square miles our offices are responsible for.

1,223,229

The size of the population we serve.

