



City of Dallas 2011 Redistricting

District 12 Submission Summary

Plan Consideration Date: Tuesday, June 14, 2011

GENERAL INFORMATION

PlanID: cPlan12

Commissioner: Tom Wood

Date of receipt: June 7, 2011

District: District 12

REVIEW CRITERIA

1. Population Equality: All districts should have substantially equal population

- Meets criteria
- Does not meet criteria
- Not applicable – Partial Plan Submission

This plan submission has a population deviation of **0.44%** for District 12

2. Minority Representation: Voting strength of minorities should not be diluted

- Meets criteria
- Does not meet criteria
- Not applicable – Partial Plan Submission

District 12 under this configuration is not a minority district.

3. Contiguity and Compactness: All districts should be geographically compact and contiguous

- Meets criteria
- Does not meet criteria

District 12 is a contiguous district. The following are the compactness scores based on four measures of geographic compactness.

	Perimeter (miles)	Area (sq. mile)	Reock	Convex Hull	Polsby- Popper	Schwartzberg
Existing D12	21.95	16.35	41.76	78.80	42.64	65.30
Proposed D12	20.60	14.63	38.21	80.65	43.31	65.81
Index	NA	NA	0.91	1.02	1.02	1.01



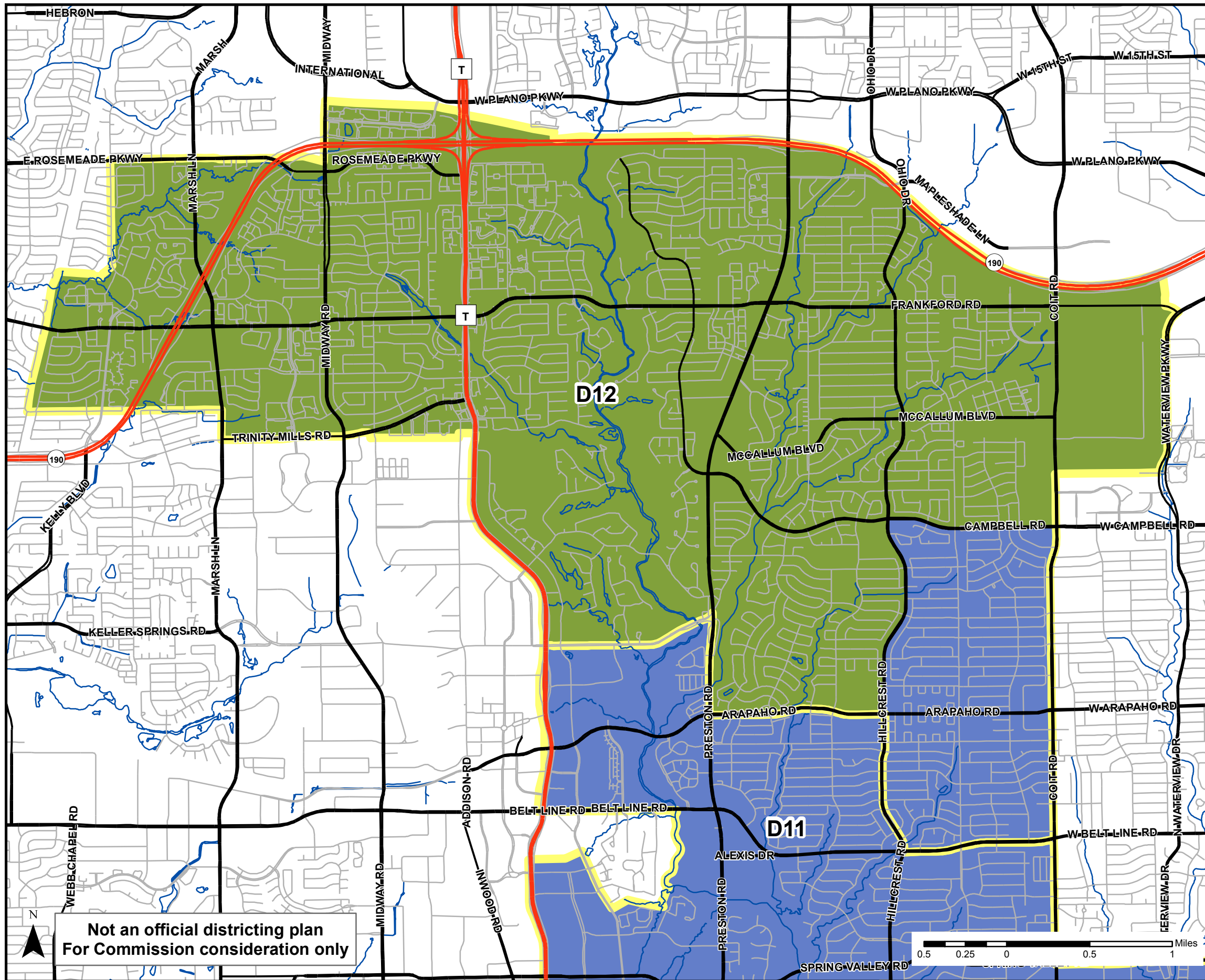
City of Dallas 2011 Redistricting
 District 12 Demographic Summary

Existing Demographic Profile

District	Total Population									Voting Age Population						
	Total Population	Deviation		Hispanic		Non-Hispanic				Total VAP	Hispanic		Non-Hispanic			
						Black		White					Black		White	
		#	%	#	%	#	%	#	%		#	%	#	%	#	%
District 11	85,192	-366	-0.43	30,521	35.83	13,271	15.58	35,931	42.18	66,381	20,322	30.61	10,037	15.12	31,513	47.47
District 12	94,604	9,046	10.6	15,740	16.64	15,434	16.31	53,806	56.87	76,323	11,213	14.69	11,910	15.60	45,361	59.43

Proposed Demographic Profile

District	Total Population									Voting Age Population						
	Total Population	Deviation		Hispanic		Non-Hispanic				Total VAP	Hispanic		Non-Hispanic			
						Black		White					Black		White	
		#	%	#	%	#	%	#	%		#	%	#	%	#	%
District 11	93,858	8,300	9.7	31,368	33.42	13,709	14.61	42,937	45.75	72,946	20,875	28.62	10,331	14.16	36,945	50.65
District 12	85,938	380	0.44	14,893	17.33	14,996	17.45	46,800	54.46	69,758	10,660	15.28	11,616	16.65	39,929	57.24



Legend

- Highways
- Major Roads
- Other Roadways
- Waterways
- Major Lakes
- Current District Boundaries
- Proposed District Boundaries**
- District 11
- District 12

Data Source:
 Council Districts - Commissioner Tom Wood (D12)
 Streets - City of Dallas, GIS Division
 Major Lakes - City of Dallas, GIS Division
 Waterways - City of Dallas, GIS Division
 Current District Boundaries - City of Dallas, GIS Division

Not an official districting plan
 For Commission consideration only

District 12 Demographic Profile

	Proposed	Existing
Total Population	85,938	94,604
Deviation (#)	380	9,046
Deviation (%)	0.44%	10.57%
Hispanic (%)	17.33%	16.6%
Black (%)	17.45%	16.3%
White (%)	54.46%	56.9%
Hispanic VAP (%)	15.28%	14.69%
Black VAP (%)	16.65%	15.60%
White VAP (%)	57.24%	59.43%

This data is believed to be correct, but its accuracy cannot be guaranteed. It is the users' responsibility to confirm the accuracy of this data. Please contact the original creators of this data for questions pertaining to its use.

Projected coordinate system name:
 NAD_1983_StatePlane_Texas_North_Central_FIPS_4202_Feet
 Geographic coordinate system name: GCS_North_American_1983