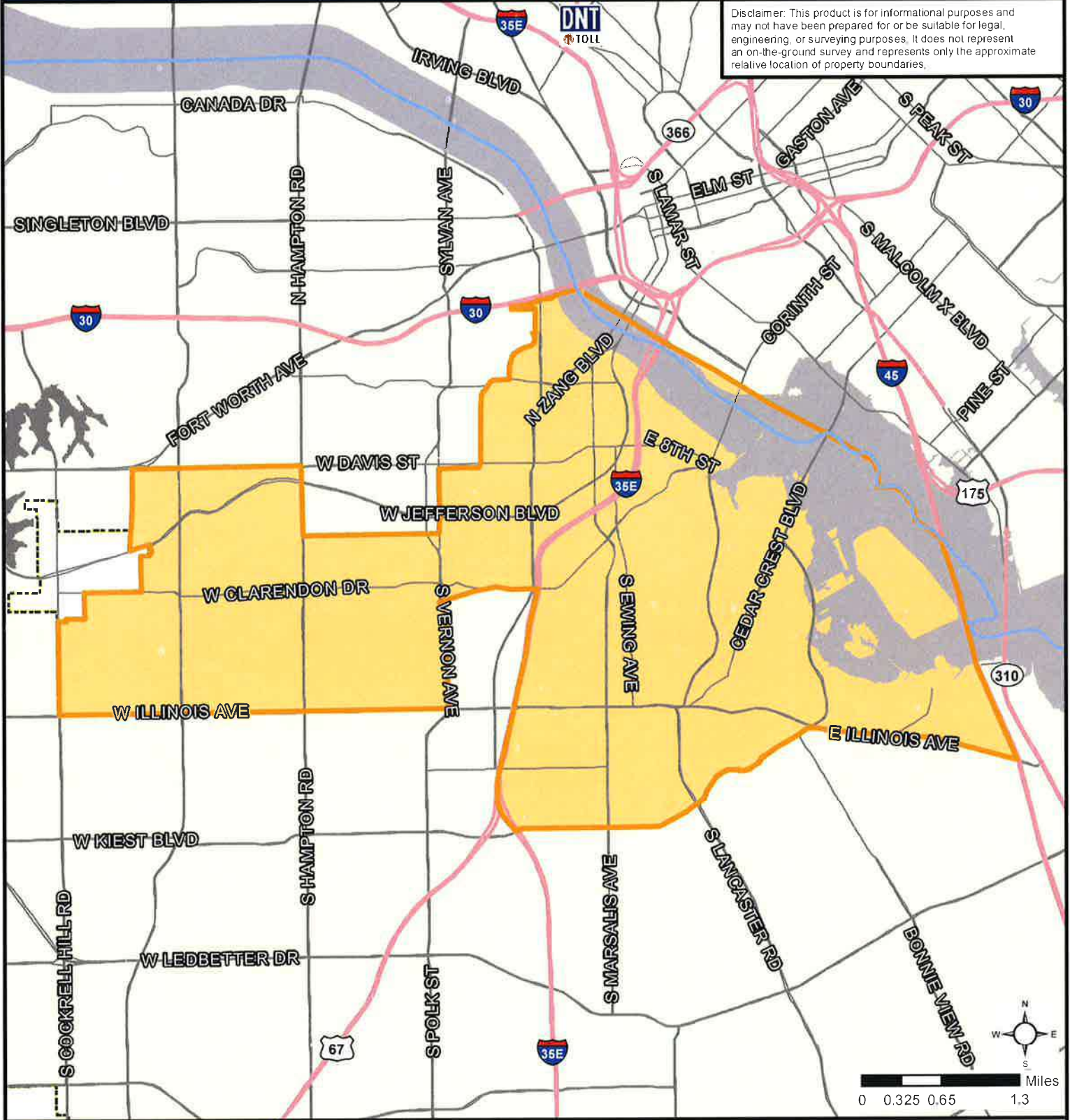


Exhibit A - Oak Cliff Gateway TIF District Funding Area for Programs related to Homeowner Stabilization, Home Repair, Displacement Mitigation

241401

Disclaimer: This product is for informational purposes and may not have been prepared for or be suitable for legal, engineering, or surveying purposes. It does not represent an on-the-ground survey and represents only the approximate relative location of property boundaries.



 **Economic Development**
Catalytic Development
(214) 670-1685
www.dallasecodev.org
Created 05/08/2024 Updated 8/19/2024
OOGTIF_Heg_FundingArea_AISmap RK

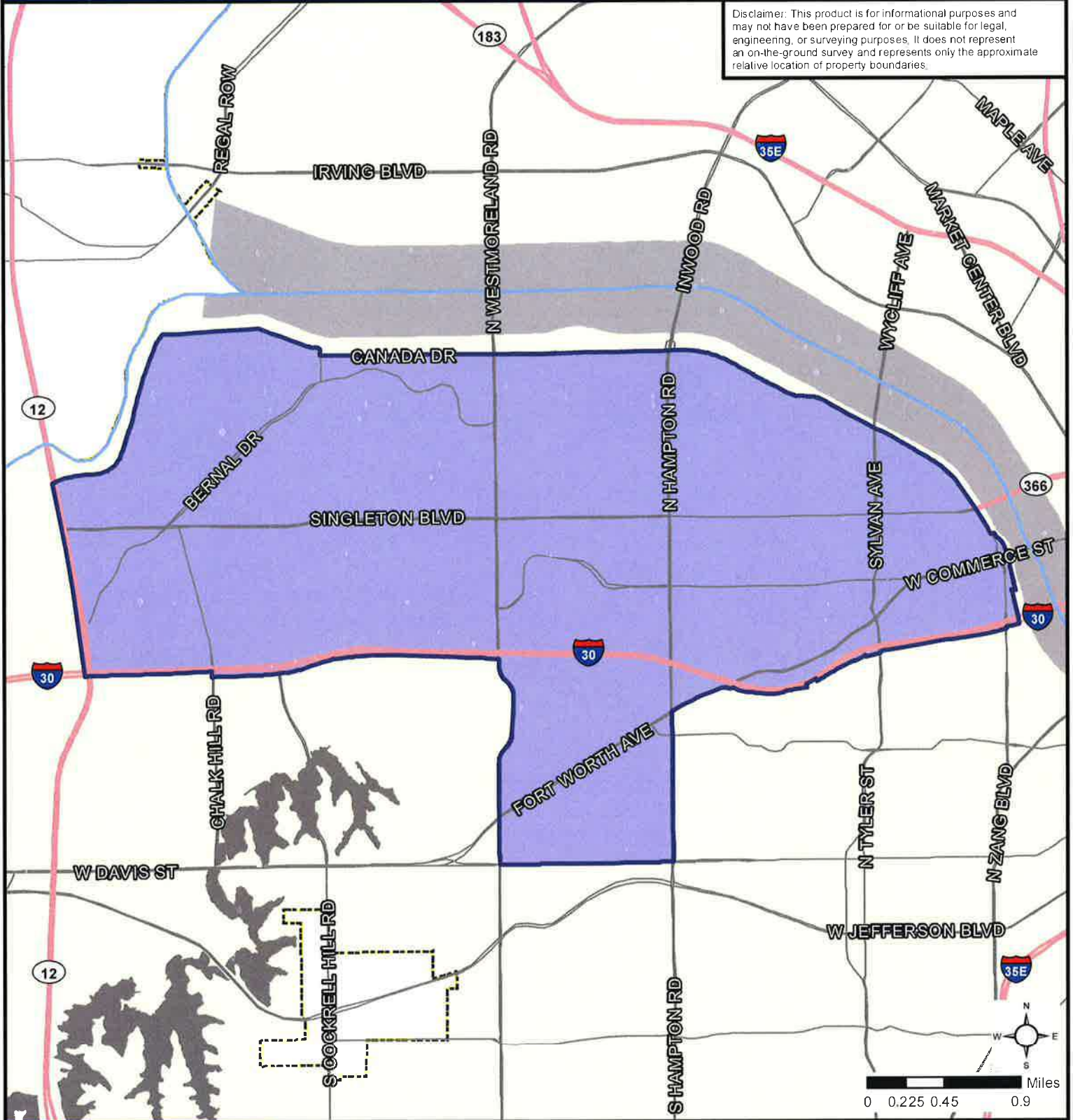
Legend

-  Oak Cliff Gateway TIF District Area for funding programs (subject to change)
-  City of Dallas
-  Escarpment
-  Flood Plain
-  Steams
-  Highways
-  Major Streets

Source: City of Dallas, 2024; DART, 2024.

Exhibit A - Fort Worth Avenue TIF District Funding Area for Programs related to Homeowner Stabilization, Home Repair, Displacement Mitigation

Disclaimer: This product is for informational purposes and may not have been prepared for or be suitable for legal, engineering, or surveying purposes. It does not represent an on-the-ground survey and represents only the approximate relative location of property boundaries.



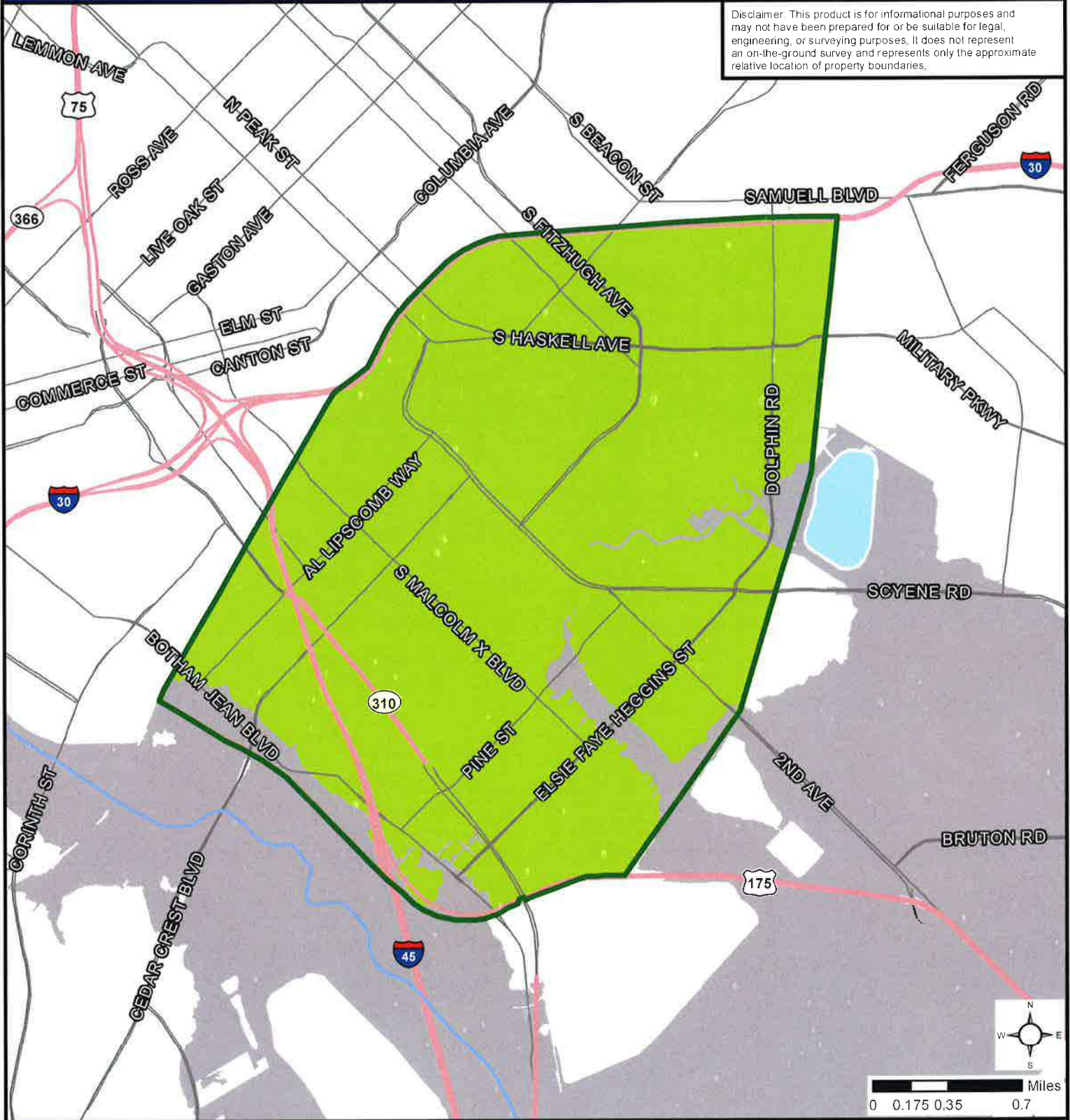
Economic Development
City of Dallas
Area Redevelopment Division
(214) 670-1685
www.dallascodev.org

Legend

- Fort Worth Avenue TIF District - Area For Funding Programs (subject to change)
- City of Dallas
- Escarpment
- Flood Plain
- Stearns
- Highways
- Major Streets

Exhibit A - Deep Ellum TIF District Funding Area for Programs related to 241401 Homeowner Stabilization, Home Repair, Displacement Mitigation

Disclaimer: This product is for informational purposes and may not have been prepared for or be suitable for legal, engineering, or surveying purposes. It does not represent an on-the-ground survey and represents only the approximate relative location of property boundaries.



Economic Development
 City of Dallas
 Catalytic Development
 (214) 670-1685
 www.dallasecdev.org
Create: 05/06/2024 Updated: 8/19/2024
 DETIF_Hsq_map_fundingarea_ExAmap_RK

Legend

- Deep Ellum TIF District - Area for funding programs (subject to change)
- Escarpment
- Flood Plain
- Lake
- Steams
- Highways
- Major Streets

Source: City of Dallas, 2024; DART, 2024.