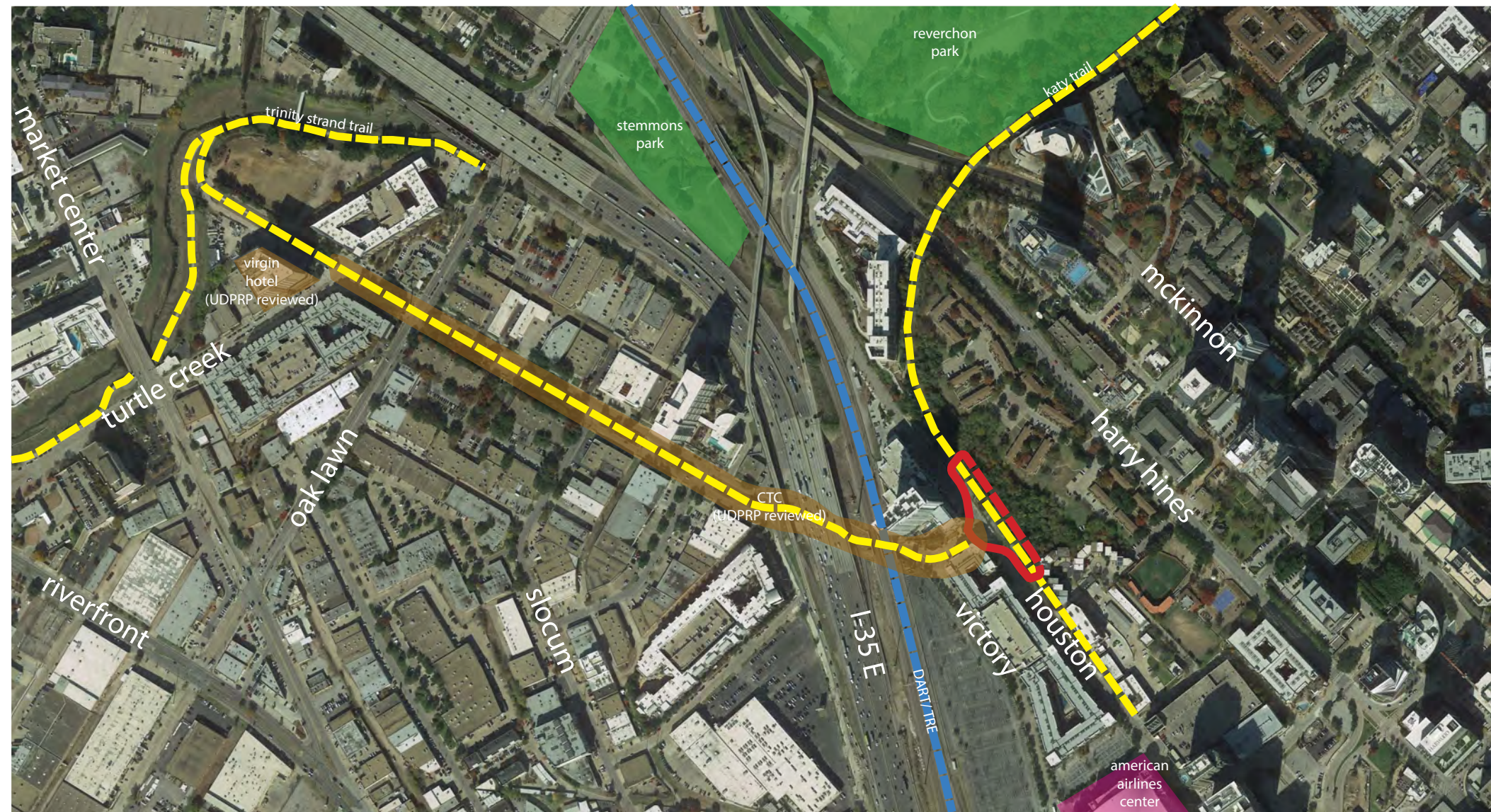


## Applicable Urban Design Priorities Project Should Achieve

- [a] Introducing a new connection to the Katy Trail from Victory Avenue will create an opportunity to develop a design that responds and celebrates the Balcones Fault Texas limestone revealed at this point.  
Consideration should be given to how these iconic rock wall formations can uniquely reinforce and inform the design and material selection and treatment.
- [b] Providing a direct, safe, and accessible option for connecting to the Katy Trail while also serving as a trailhead that orients and provides a welcoming area of respite.  
Attention should be given to accommodating these and other program components in a tight footprint while celebrating this unique location through design and public art.
- [c] The Katy Trail passes through one of its tightest right-of-ways at this point. Determining how space can be allocated to provide safe and well marked ped/ bike facilities, overlook and rest areas, and shade opportunities should be carefully considered.  
Thought should be given to how the Overlook Plaza's critical program components can safely connect with the exiting Katy Trail through a deliberate design response.
- [d] This project creates an important opportunity to design a Overlook Plaza that can allow the neighboring Little Mexico DHA and Harwood communities direct access to this end of the Katy Trail.  
Careful attention should be given to how in the future, this project can easily accommodate an access point without much disturbance to the Katy Trail or Overlook Plaza.



## Policy References

- Forward Dallas!  
Section 5 [urban design element]
- The 360 Plan (2017)
- TIF Urban Design Guidelines  
Part III, Part IV [Sports Arena]
- Dallas Complete Streets Design Manual  
Chapters II, III, V

## Context Description

Design for the Circuit Trail Overlook Plaza, a critical component of the Hi-Line Connector, has undergone substantial changes since the Panel first reviewed this project in 2019. The Overlook Plaza will complete the one mile link between two highly used bike/pedestrian trails in Victory Park and the Design District providing a safe and accessible pedestrian and bike connection while delivering public open space enhancements and economic development to the adjacent districts. The Connector is one of the critical links needed to complete The Loop, a 50+ mile trail network comprising existing and proposed trails circling the heart of Dallas. Funding was dedicated in the 2017 Bond to complete the missing eleven miles of The Loop, including the Hi-Line Connector.

Design considerations for the Overlook Plaza include the preservation of existing trees where possible, integration of public art and shade, signage, a phasing strategy to facilitate minimal interruption to the use of Katy Trail during construction, and the opportunity to accommodate a future connection to the neighboring Little Mexico DHA community and beyond to Harry Hines Blvd and the Harwood District.

## CTC Trail Overlook

- Neighborhood:  
Victory Park
- TIF District:  
Sports Arena
- Program:  
Pedestrian Bridge  
Bike Lanes  
Open Space

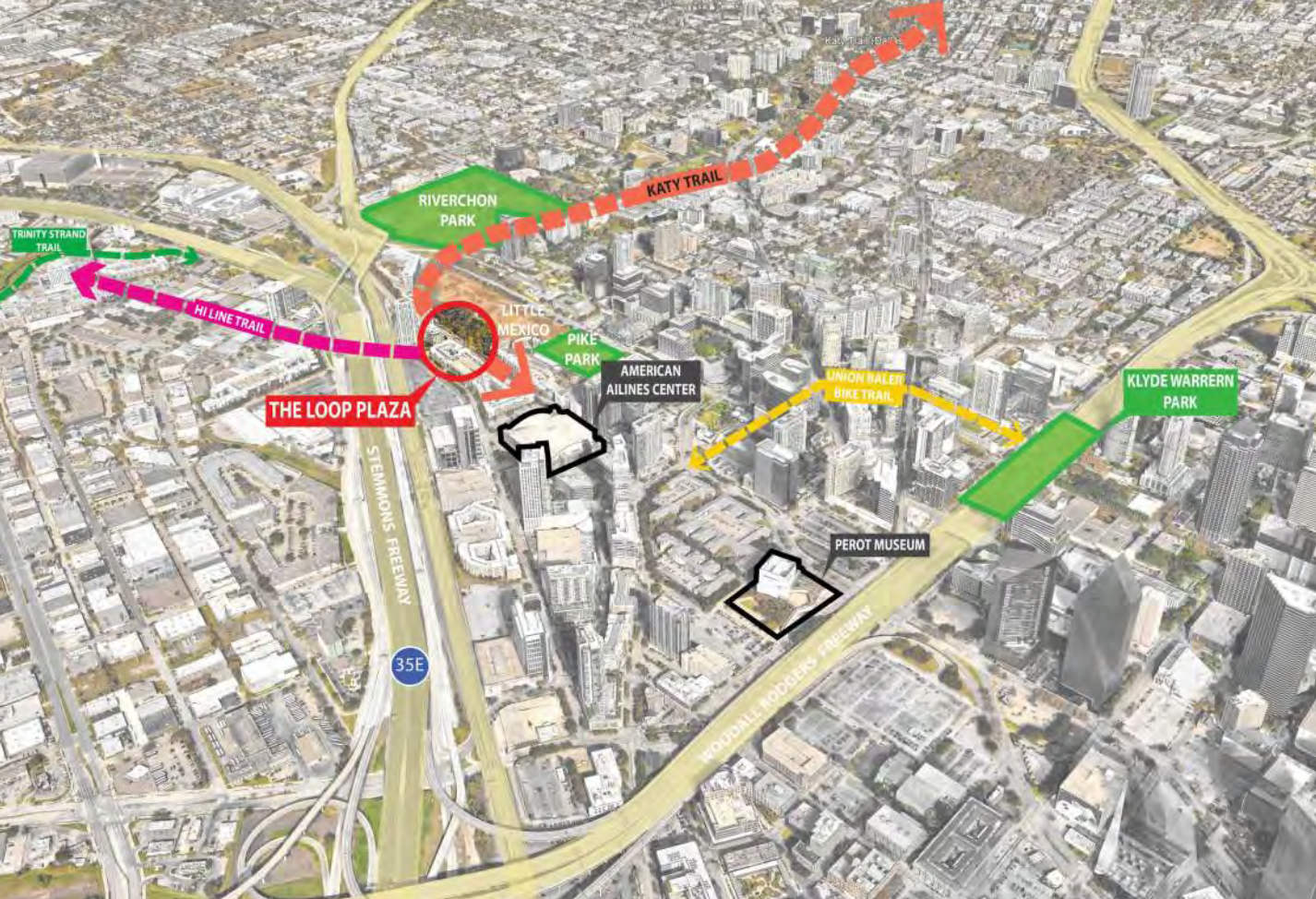
# THE LOOP PLAZA

An architectural rendering of a modern urban plaza. The scene is viewed from an elevated perspective. In the foreground, a paved plaza area features a white car in the center, a dark car on the right, and several people walking and cycling. A wide, multi-level pedestrian bridge with a glass railing spans across the middle ground. Behind the bridge, a dense line of trees and greenery is visible. In the background, several tall, modern skyscrapers rise against a cloudy sky. The overall aesthetic is clean, modern, and urban.

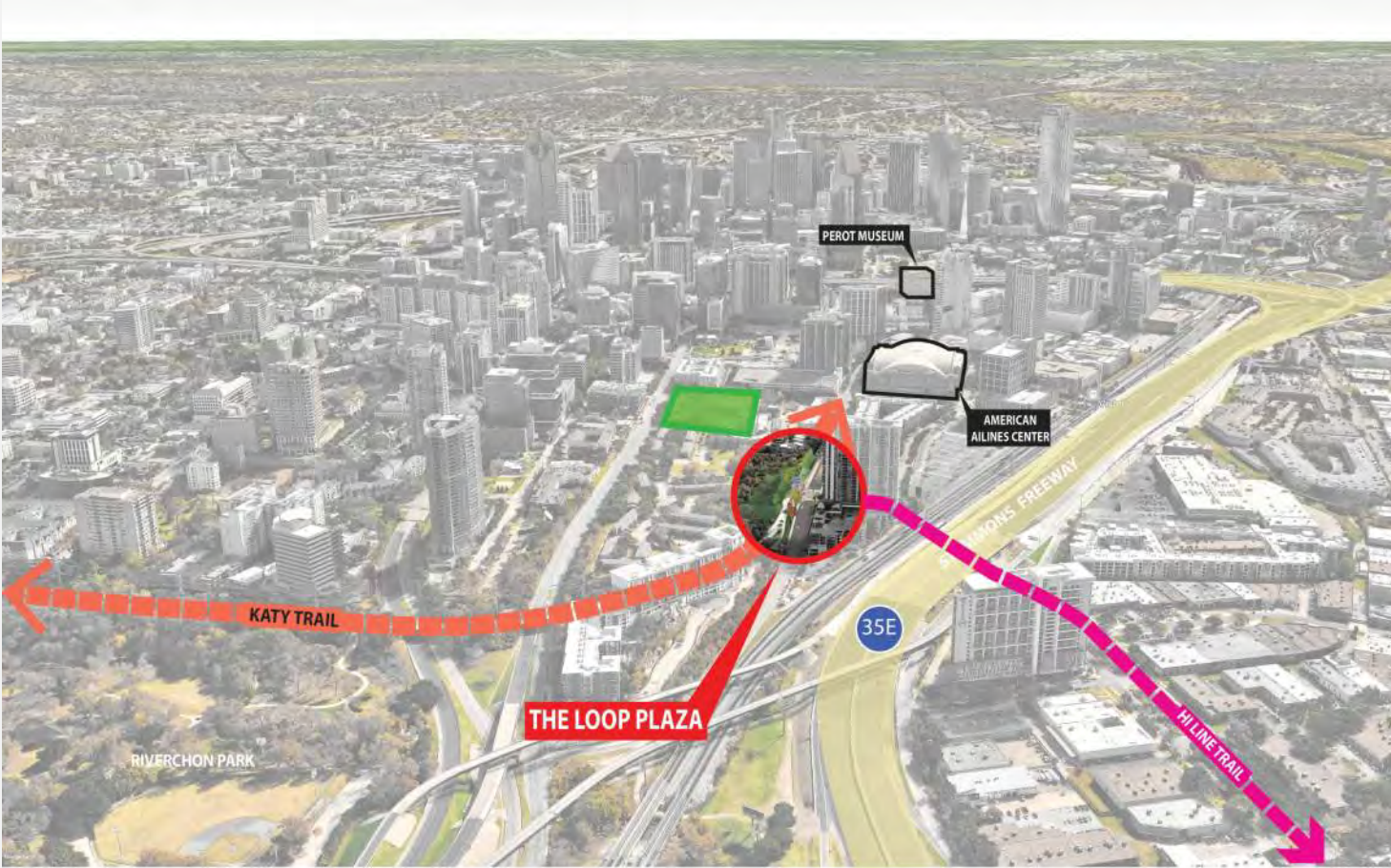
AREA CONTEXT MAP



AREA CONTEXT MAP



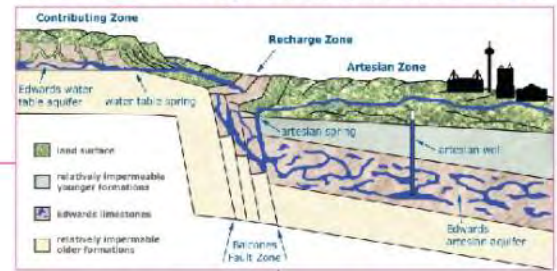
# AREA CONTEXT MAP



# ESCARPMENT GEOLOGY OF THE AREA



The Balcones Fault builds significant escarpments across central Texas



# EXISTING CONDITIONS

An aerial photograph of a city street intersection. The scene shows a multi-lane road with cars and a crosswalk with pedestrians. On either side are multi-story brick buildings with many windows. The text "EXISTING CONDITIONS" is overlaid in large white letters across the center of the image.

## EXISTING CONDITIONS

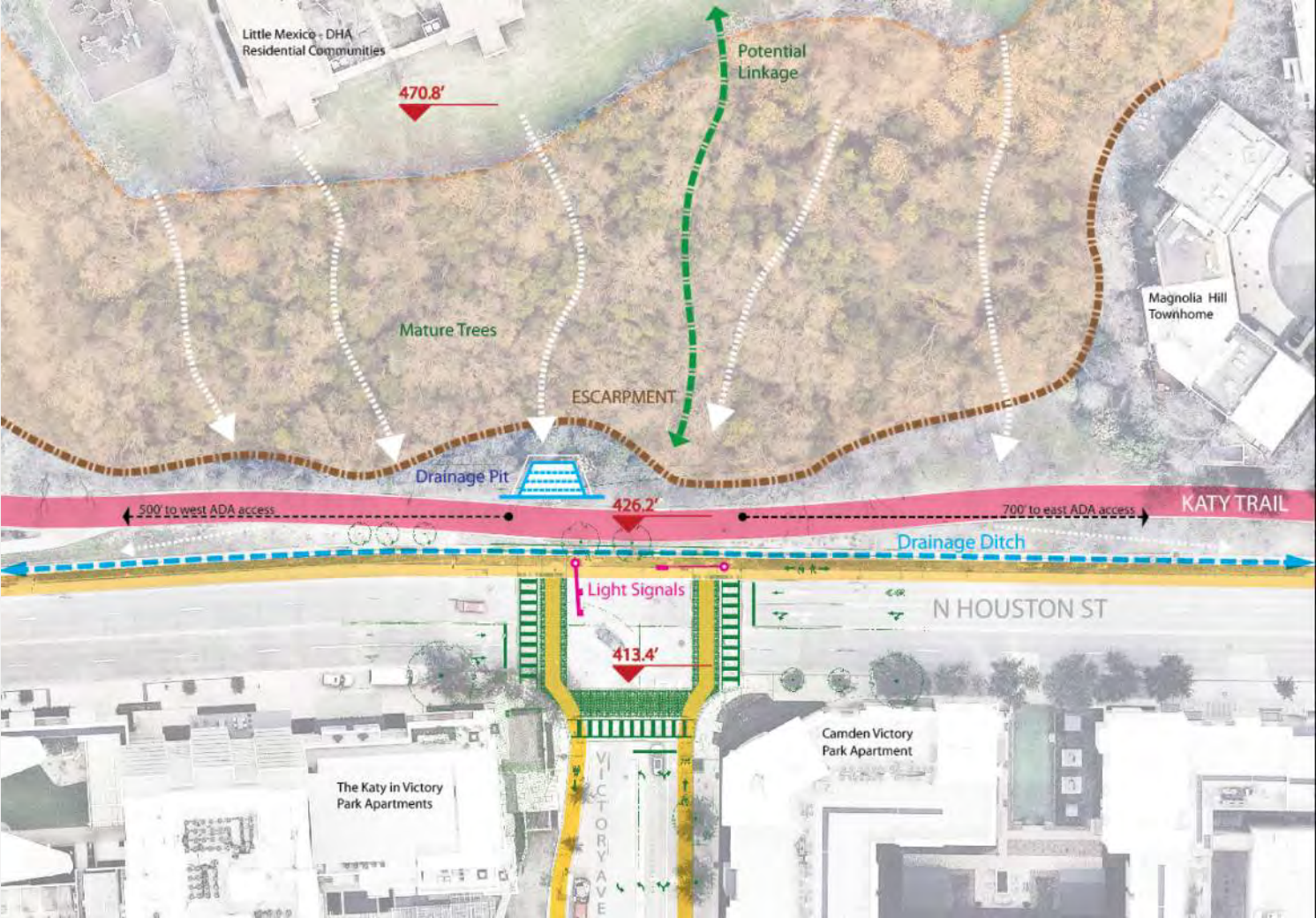




# EXISTING CONDITIONS



OPPORTUNITIES /  
CONSTRAINTS



An aerial rendering of a city street intersection. The scene shows a multi-lane road with a crosswalk, surrounded by modern multi-story brick and stone buildings. Pedestrians are walking across the crosswalk, and several cars are visible on the road. The overall atmosphere is that of a vibrant, walkable urban environment.

**DESIGN SHOWN TO UDRP  
PREVIOUSLY**

VIEW  
03



\*\*\* THE PROPOSED TRAIL CONNECTION TO THE KATY TRAIL IS A PROJECT ALTERNATE AND NOT A PART OF THE PROJECT BASE BID\*\*\*



# STAIR TO KATY TRAIL

N. HOUSTON - VICTORY AVE WEST



THE LOOP

## BACK TO THE BASICS

WHAT DOES THIS PROJECT WANT TO BE?

GOAL - Katy trail to act as the dominant gathering place.

GOAL: Create upper and lower level to be safe, inviting and feel easy to travel to and through

GOAL: Not to lose the natural feel of the Katy Trail

Goal: Keep it simple not complex.  
Phillip H.

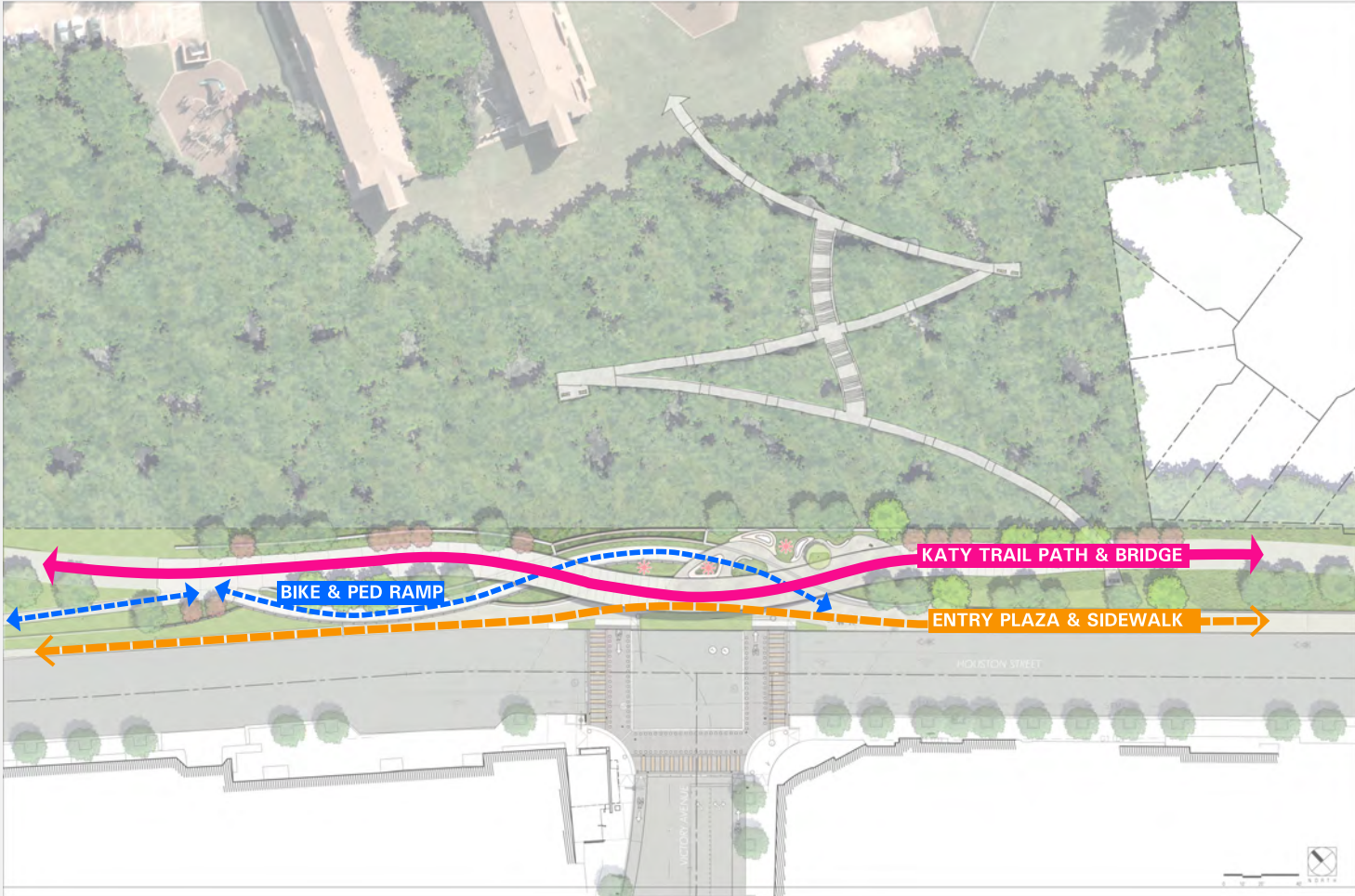
# CONCEPT PLAN

## LEGEND

- Ⓐ Entry Plaza under Bridge
- Ⓑ Upper Level Plaza
- Ⓒ Ramps and Stairs to upper levels
- Ⓓ Bike / Ped Sloped Walk
- Ⓔ Bridge
- Ⓕ Pausing Area on Bridge
- Ⓖ Existing Forested Area
- Ⓗ Stone Wall
- Ⓙ Custom Bench



# CIRCULATION PLAN



LEGEND

- Ⓐ Entry Plaza under Bridge
- Ⓑ Sitting Edges under Bridge
- Ⓒ Bike / Ped Sloped Walk
- Ⓓ Katy Trail / Bridge
- Ⓔ Overlook on Bridge
- Ⓕ Natural Escarpment
- Ⓖ Existing Forested Area
- Ⓗ Drainage Infrastructure
- Ⓘ Shade Structure

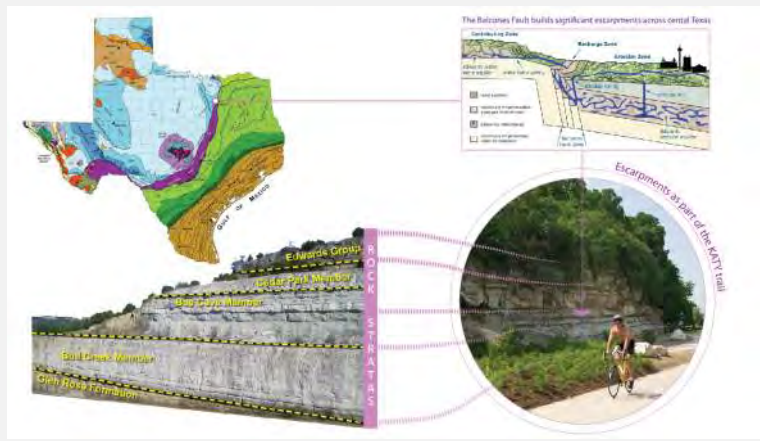




SIMPLISTIC FORMS  
INSPIRATION



# ESCARPMENT INSPIRATION



ART - INSPIRATION



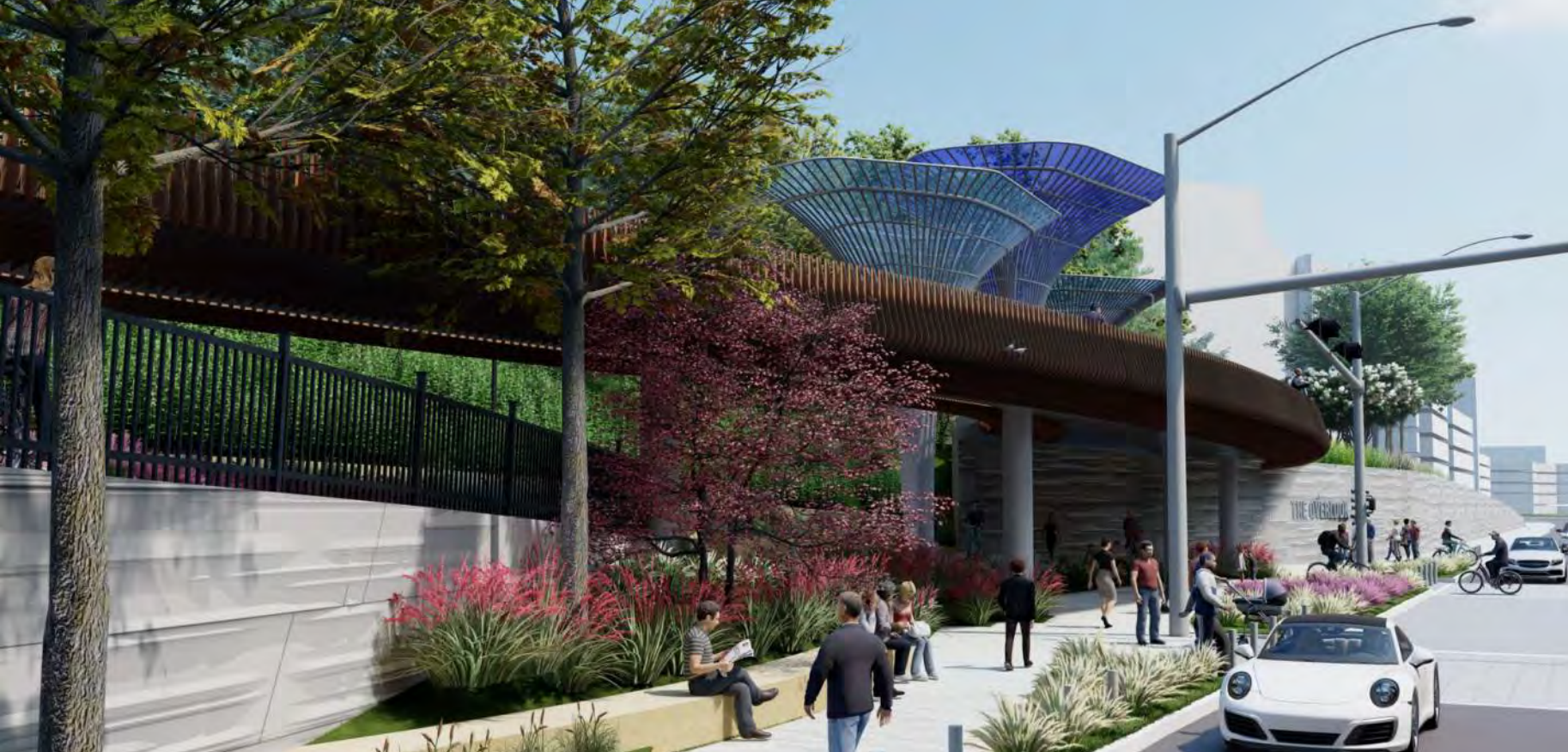
BRIDGE ELEVATION



## BRIDGE GROUND LEVEL



BRIDGE FROM HOUSTON ST.



# BRIDGE GOING UP RAMP



# BRIDGE AERIAL





BRIDGE UPPER LEVEL



UPPER LEVEL PLAZA



# AERIAL OF PLAZA



THANK YOU

