

Applicable Urban Design Priorities Project Should Achieve

- [1] Develop a vision for the future of the Southwestern Medical District’s pedestrian environment that balances the needs of all users and serves a multitude of social, recreational, and ecological needs.

Embrace complete streets along edges of the District which prioritize the needs of pedestrians, cyclists, public transit users, and motorists alike and design streetscapes that accommodate multiple modes of transportation, have wide sidewalks, and adequate bike infrastructure.
- [2] Integrate green infrastructure elements into the pedestrian environment to enhance ecological sustainability, mitigate environmental impacts, and acknowledge CECAP goals. Incorporate native trees, rain gardens, bioswales, permeable pavement, and green roofs to manage stormwater runoff, improve air quality, and provide habitat for wildlife.
- [3] Create inviting and vibrant pedestrian spaces that encourage usage, social interaction, and recreation. Incorporate opportunities for public art, seating, community gathering and play spaces.

Consider how the proposed phasing can maximize the success of the development and surrounding neighborhoods over time. Ensure project can remain responsive to evolving needs, capitalize on opportunities, provide infrastructure, and create public amenities that support the needs of residents, businesses, and visitors as the project evolves.
- [4] Improve safe pedestrian and vehicular access to downtown and adjacent destinations with reconfiguration of the Harry Hines Boulevard cloverleaf interchange. Adjustments to the city grid and off-ramp should facilitate safe pedestrian movement, simplify vehicular conflicts and access to/from Southwestern Medical District, and provide opportunities to visually enhance the District with park and open space.

- Previously Reviewed UDPRP Projects
1. UTSW Proton Treatment Center, 2013

2. The Green Heart, 2019

3. Dallas Medical Research Park at Parkland, 2020

4. Hawthorne Townhomes, 2013

- Policy References
- Forward Dallas 2.0
- Comprehensive Environmental & Climate Action Plan (CECAP)
- TIF Urban Design Guidelines
- The 360 Plan, Chapters 4 & 5
- Southwestern Medical District Area Plan



Context Description

The Southwestern Medical District Transformation Project is a catalytic, multi-phase infrastructure project that reimagines the public realm and green space development within Dallas’s premier medical area—home to Parkland Health, Children’s Health, and UT Southwestern. The design effort is grounded in biophilic design principles and an evidence-based design process in order to increase the physical and mental health benefits of the project while mitigating urban heat.

Phase 1, Green Spine, will convert Harry Hines Boulevard from Butler Road to Market Center Boulevard into a safe, shaded, multi-modal corridor. Phase 2, Green Park, will create an iconic 8-acre signature park in the heart of the District. Together, these two phases strengthen public safety, health, infrastructure resilience, and economic vitality, while advancing the City’s Climate Action Plan, Complete Streets policies, and Vision Zero goals.

SW Medical District Transformation

Neighborhood:
Southwestern Medical District TIF

Program:
Open Space
Streetscape

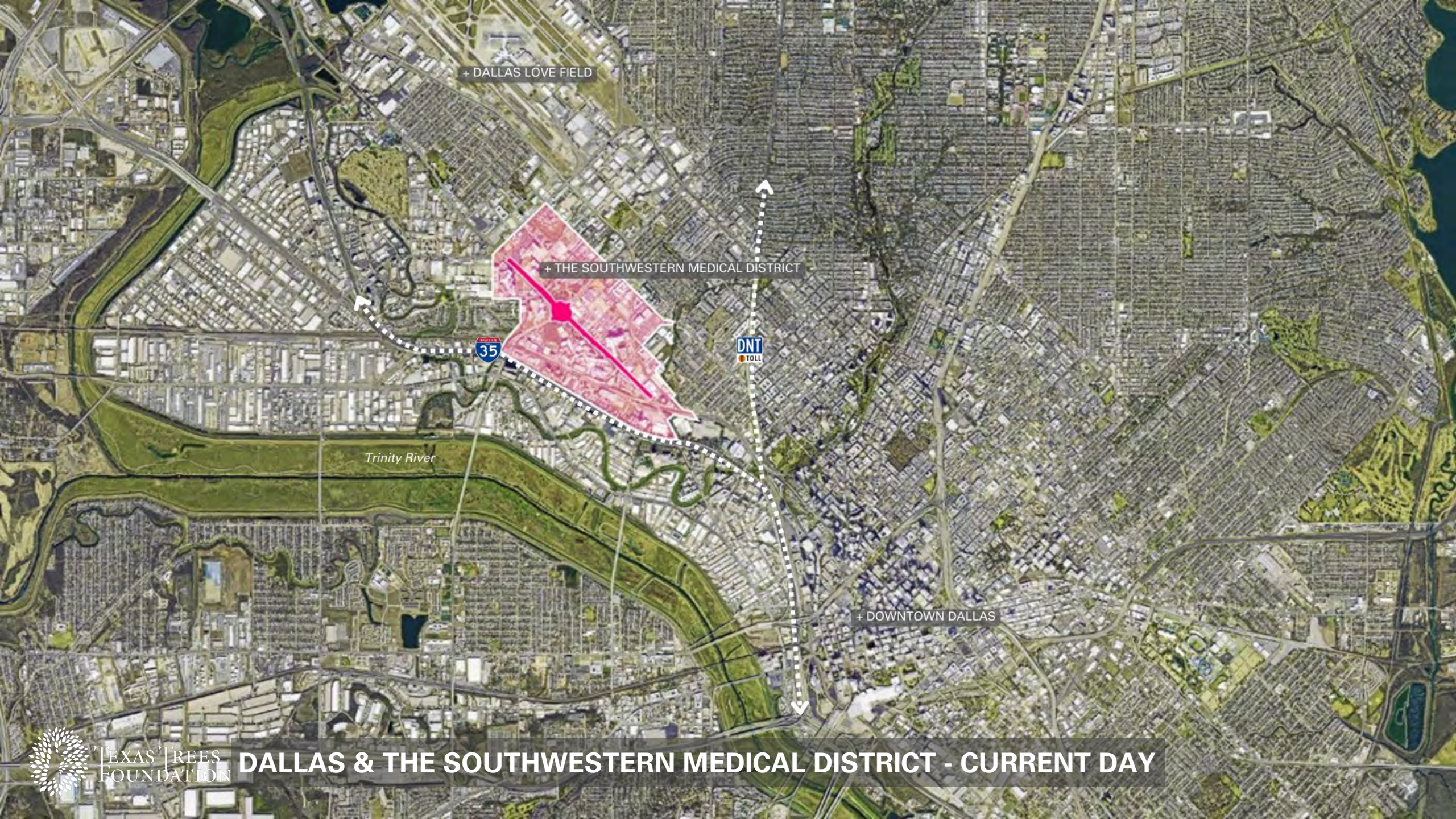
SWMD Urban Streetscape Project

fieldoperations



TRANSFORM HARRY HINES BOULEVARD





+ DALLAS LOVE FIELD

+ THE SOUTHWESTERN MEDICAL DISTRICT

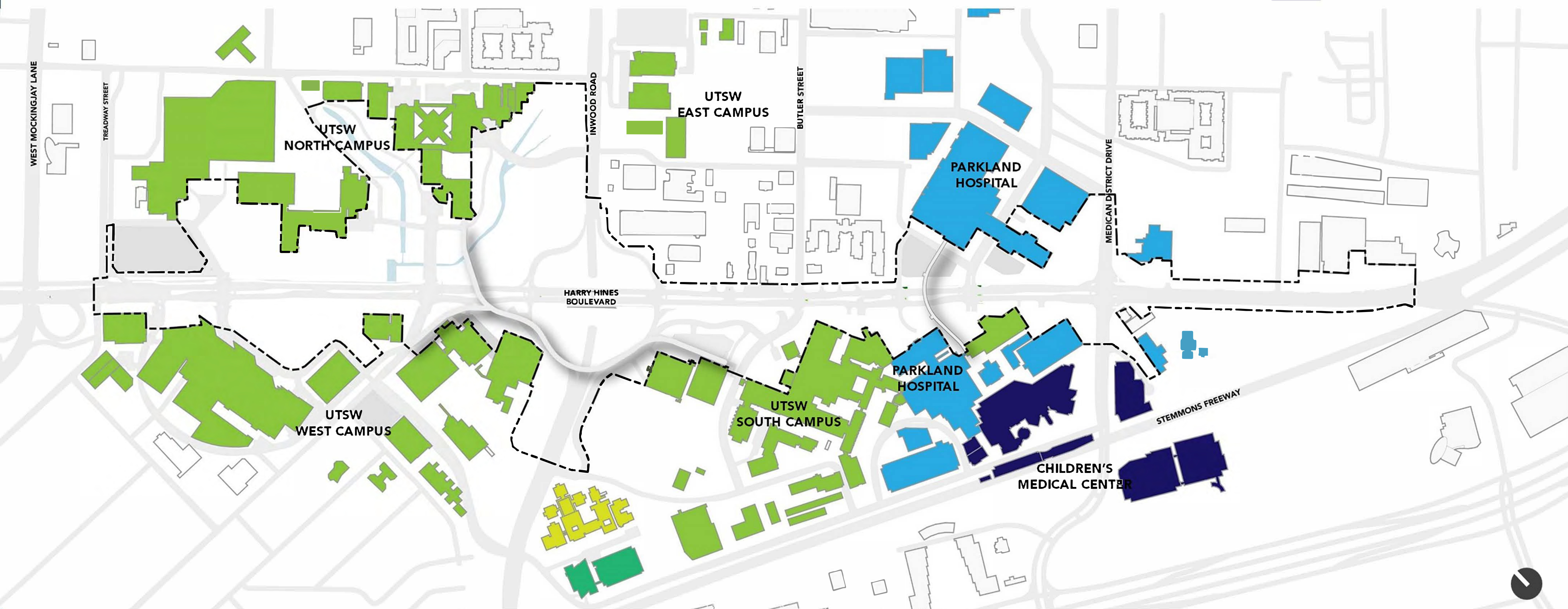


Trinity River



+ DOWNTOWN DALLAS

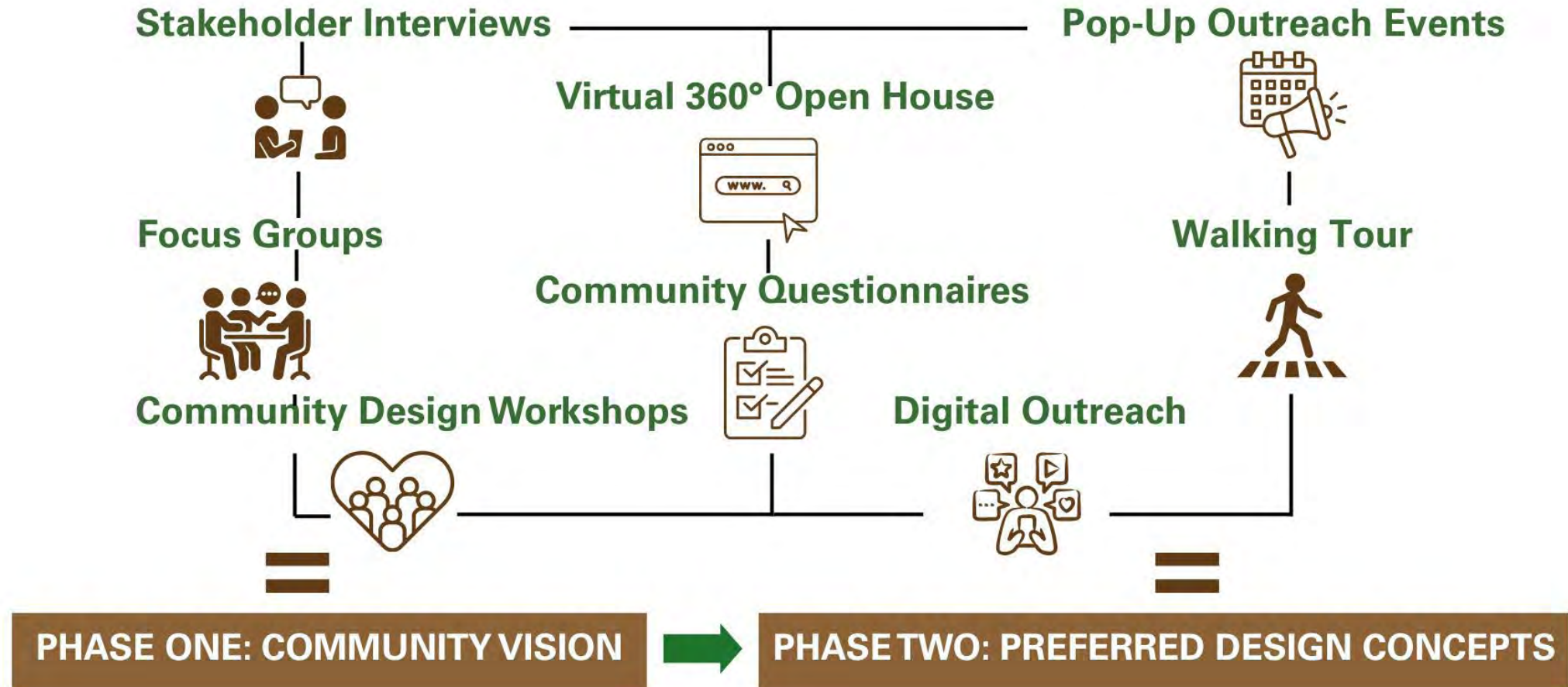
- UTSW
- PARKLAND HEALTH
- UT DALLAS
- TEXAS WOMAN'S UNIVERSITY
- CHILDREN'S HEALTH



FOR 4 MILLION PEOPLE PER YEAR

3,255 Community Participants

ENGAGED IN A HYBRID MIX OF ENGAGEMENT ACTIVITIES:
PHASE ONE (2021) AND PHASE TWO (2023)



“Access to nature has been related to lower levels of mortality and illness, higher levels of outdoor physical activity, restoration from stress, a greater sense of well-being, and greater social capital.”

- American Public Health Association



PHYSICAL HEALTH



A FITNESS & WELLNESS
DESTINATION

SOCIAL HEALTH



SPACES FOR GATHERING &
SHARED ACTIVITIES

MENTAL HEALTH



ACCESS TO NATURE &
OPPORTUNITIES FOR CONTEMPLATION

ENVIRONMENTAL HEALTH



NATURAL &
RESILIENT ENVIRONMENTS



SOUTHWESTERN MEDICAL DISTRICT

Harry Hines Blvd.

The Green Spine

1.75 Miles



The Green Park

8 Acres

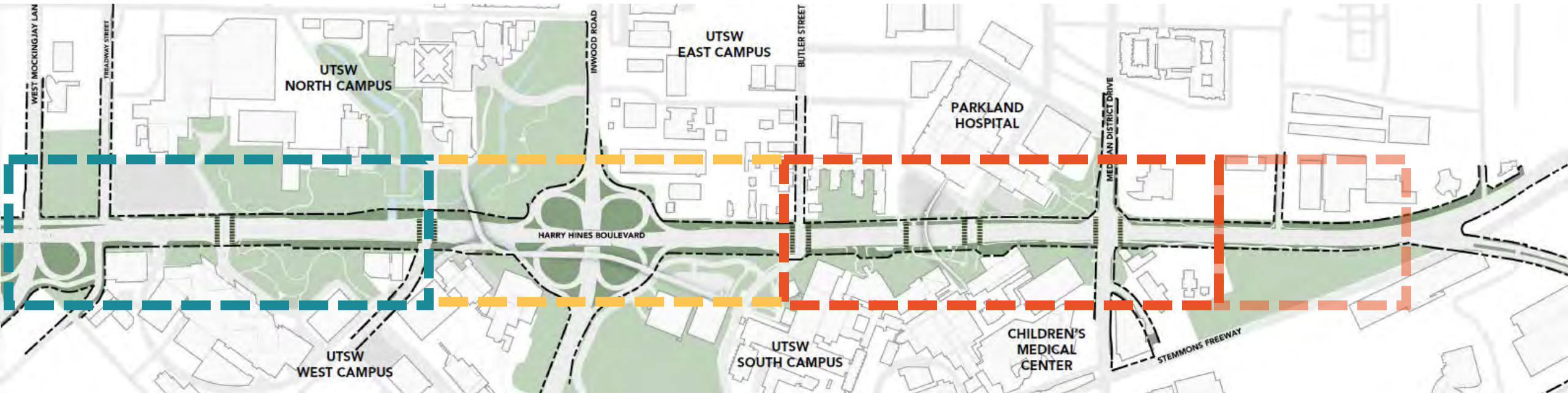
Design Phasing Plan

Phase 2: TTF Green Park

- Infrastructure managed by TTF
- Amenities managed by TTF

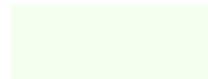
Phase 1: TTF | COD Green Spine

- Infrastructure managed by COD
- Amenities managed by TTF



Phase 3: COD HH at Mockingbird

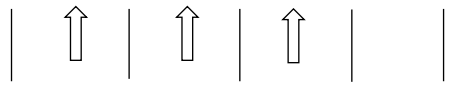
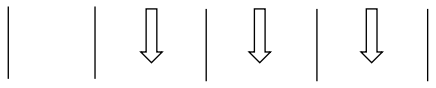
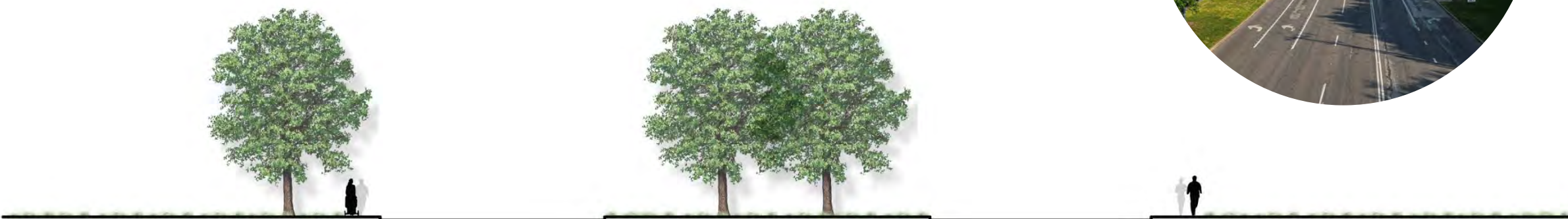
- Infrastructure funded and managed by COD



THE GREEN SPINE

R.O.W

R.O.W



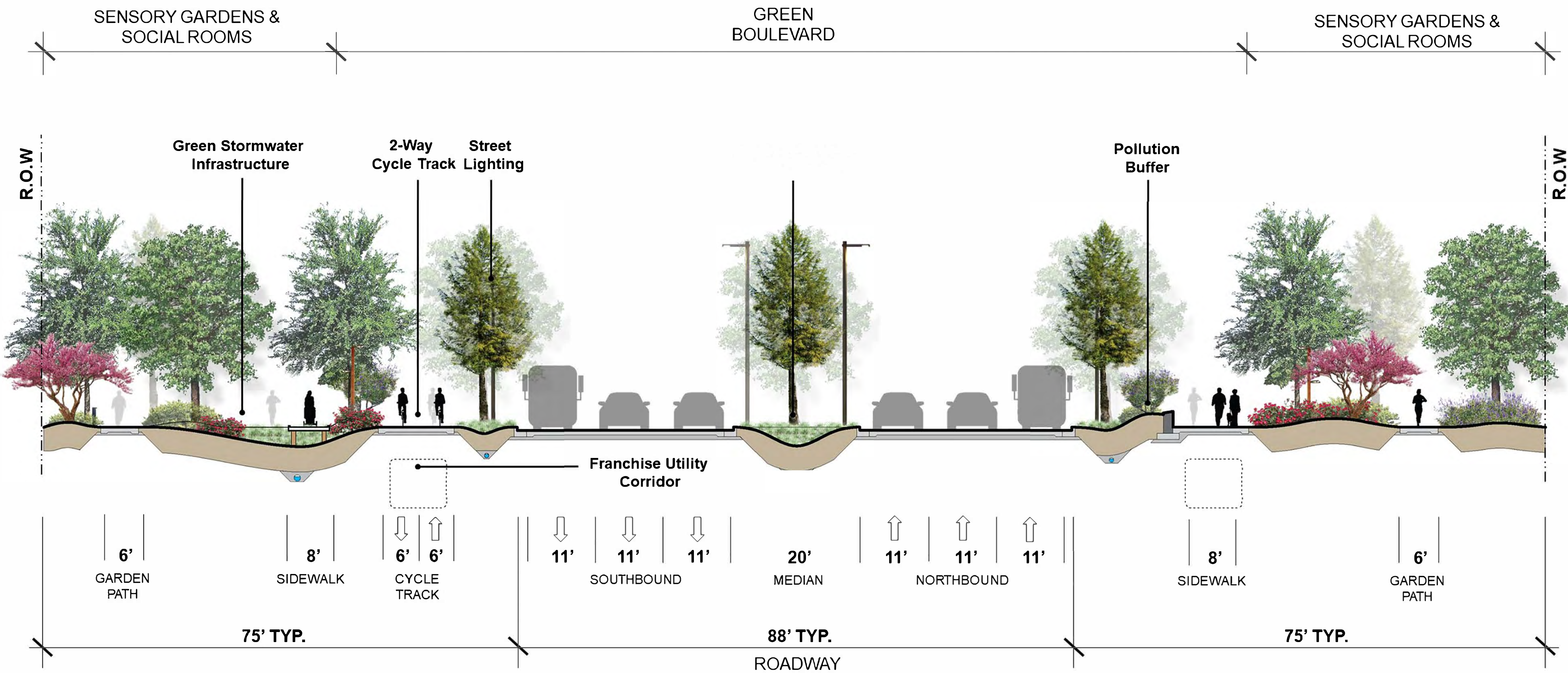
SIDEWALK

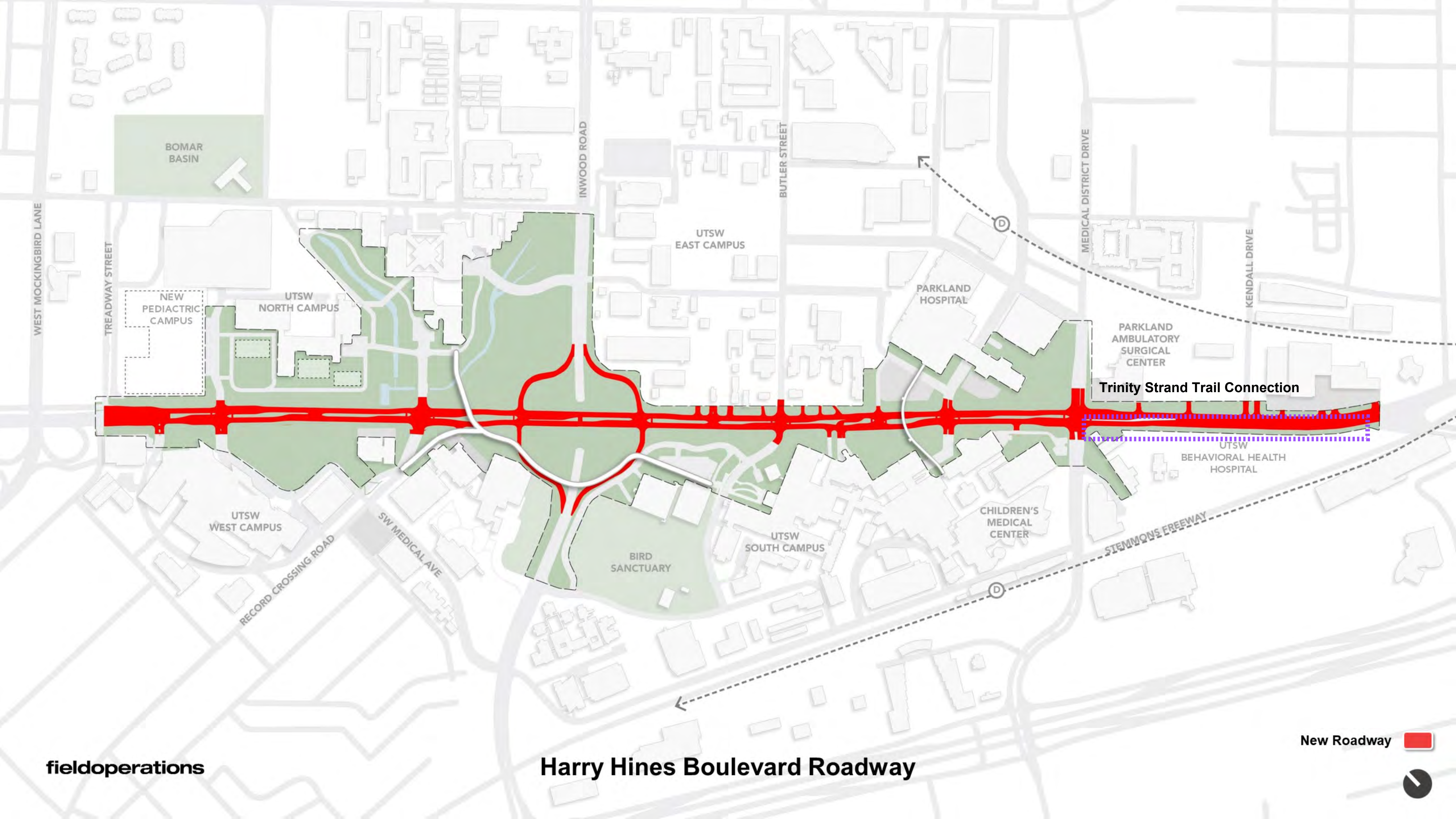
SOUTHBOUND

MEDIAN

NORTHBOUND

SIDEWALK





WEST MOCKINGBIRD LANE

TREADWAY STREET

BOMAR
BASIN

NEW
PEDIATRIC
CAMPUS

UTSW
NORTH CAMPUS

INWOOD ROAD

UTSW
EAST CAMPUS

BUTLER STREET

PARKLAND
HOSPITAL

MEDICAL DISTRICT DRIVE

KENDALL DRIVE

Trinity Strand Trail Connection

PARKLAND
AMBULATORY
SURGICAL
CENTER

UTSW
BEHAVIORAL HEALTH
HOSPITAL

UTSW
WEST CAMPUS

RECORD CROSSING ROAD

SW MEDICAL AVE

BIRD
SANCTUARY

UTSW
SOUTH CAMPUS

CHILDREN'S
MEDICAL
CENTER

STEMMONS FREEWAY

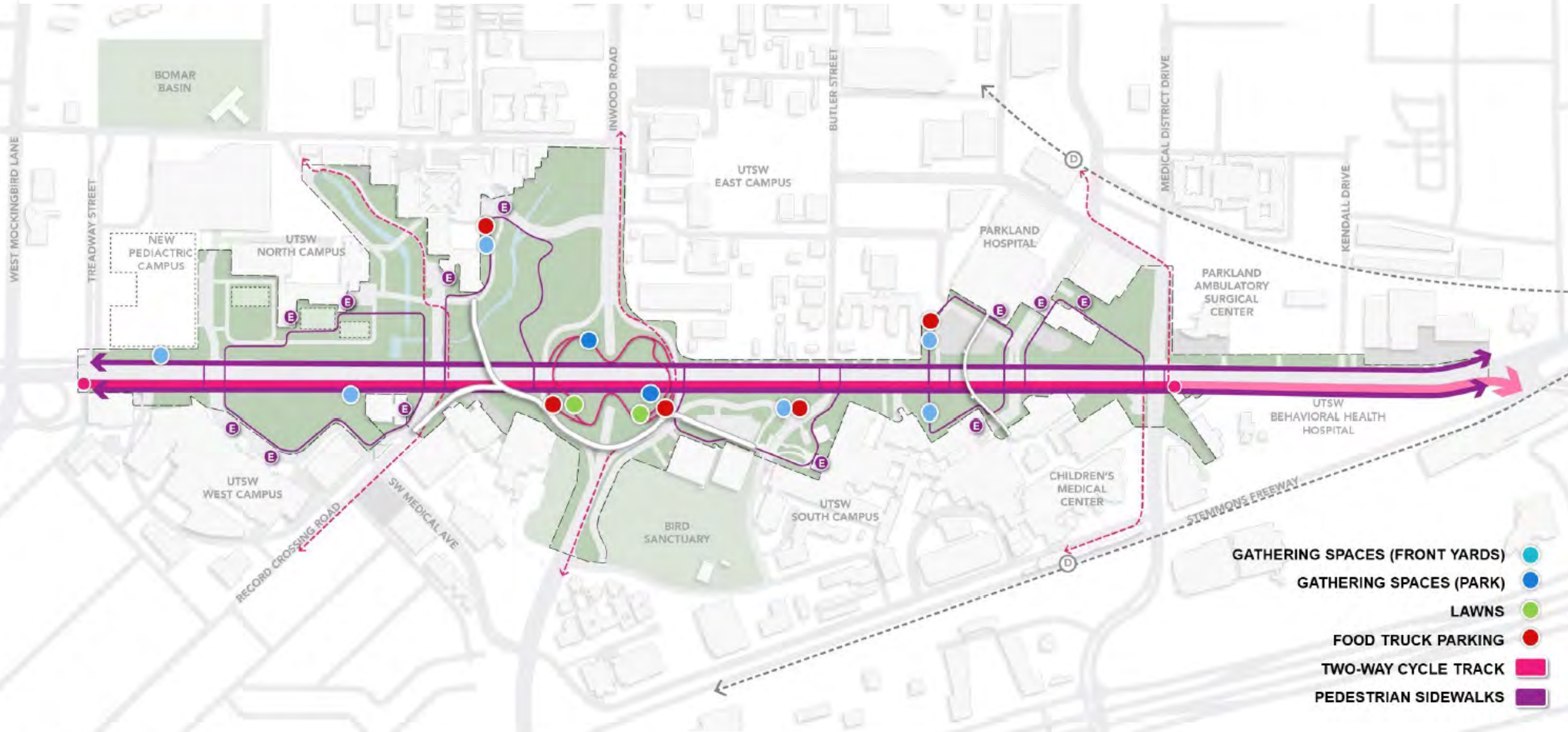
fieldoperations

Harry Hines Boulevard Roadway

New Roadway



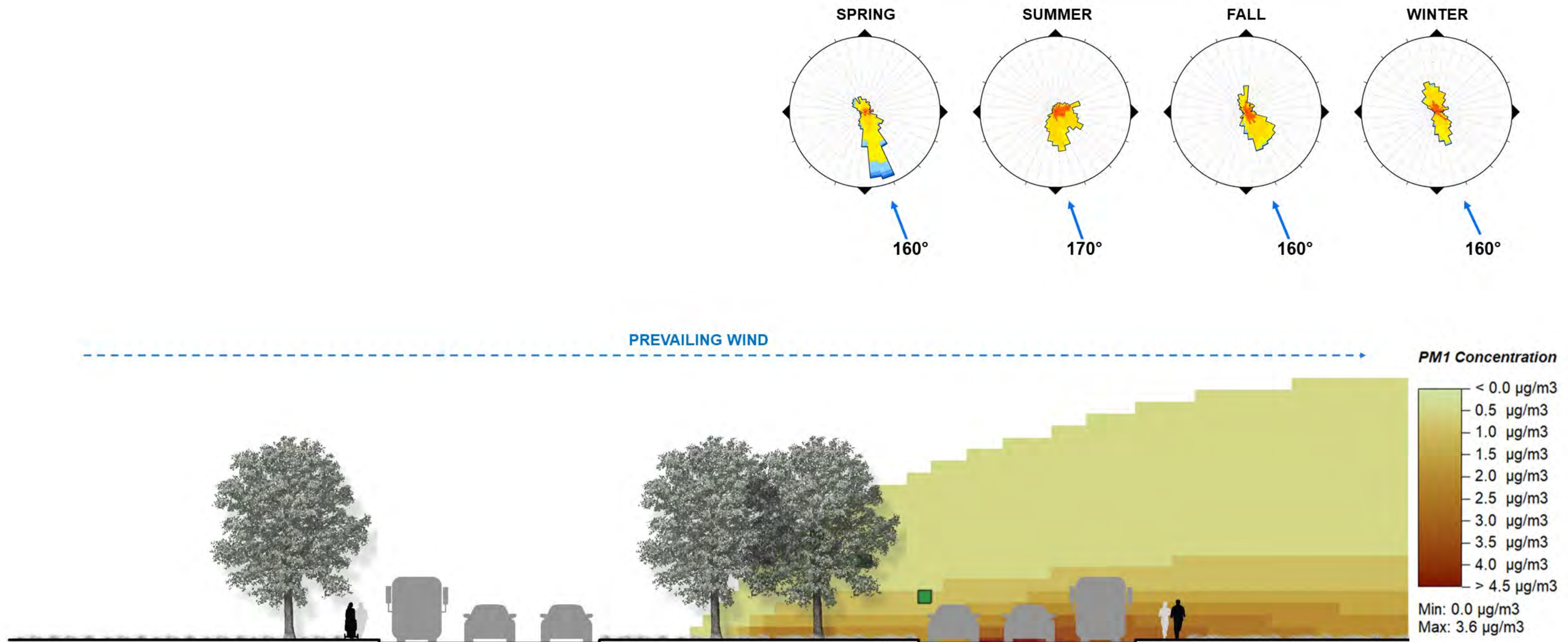
How can we attract district users to use the Harry Hines corridor?

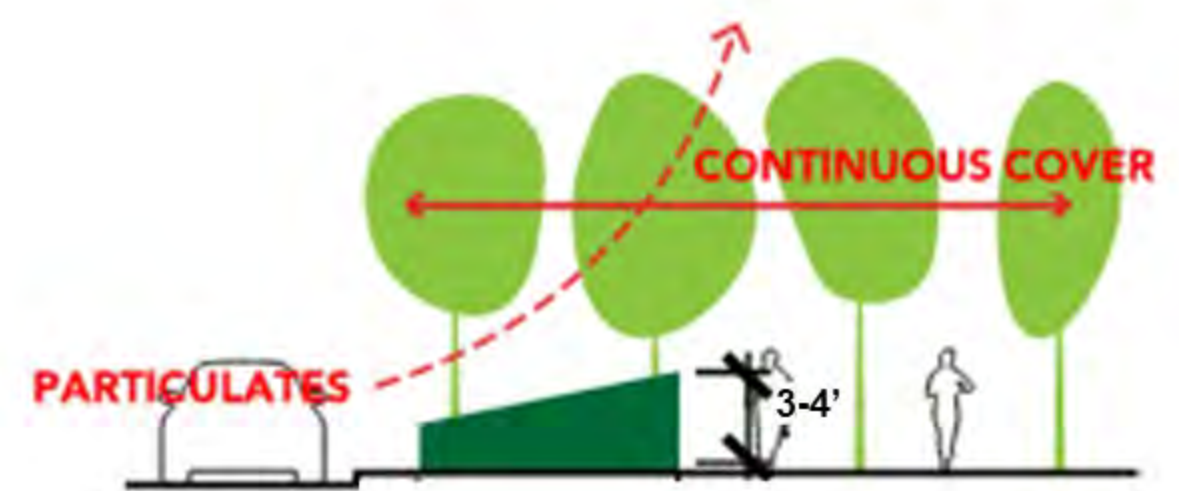




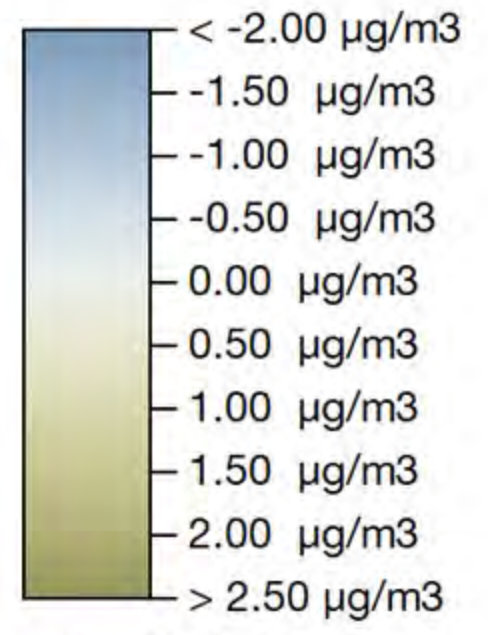
fieldoperations

A Separated 2-Way Cycle Track





*absolute difference PM1
Concentration*



Min: -0.98 µg/m3
Max: 3.20 µg/m3

fieldoperations

Improvements to Air Quality



fieldoperations

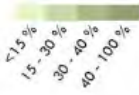
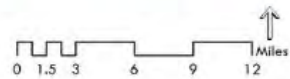
Air Quality Buffers



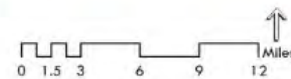
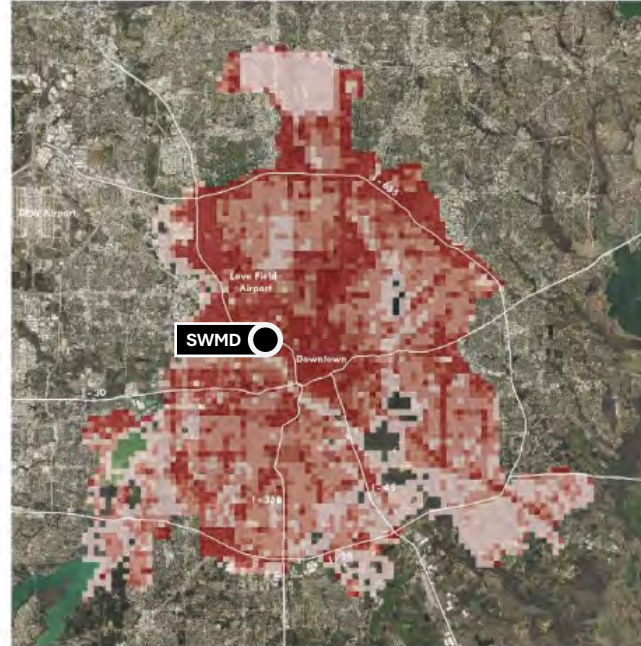
fieldoperations

Pedestrian and Bike-Friendly Crossings at All Intersections

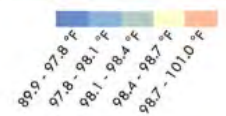
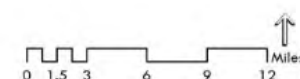
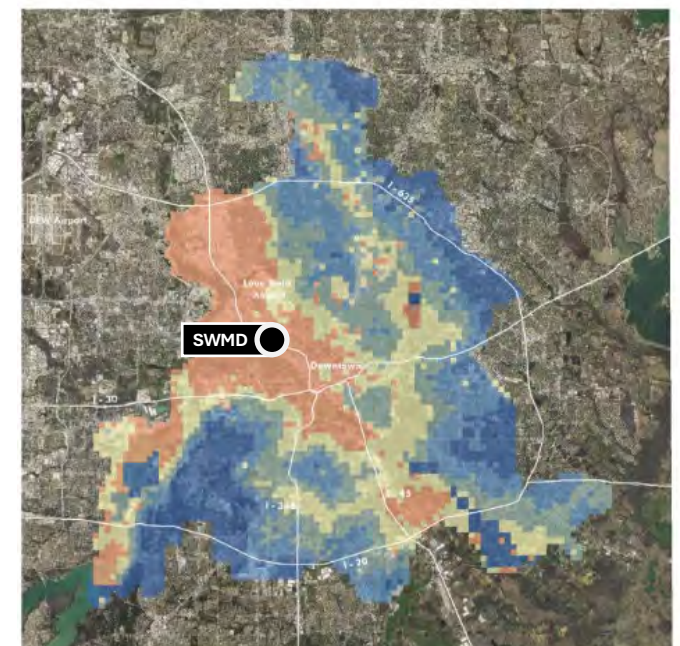
Tree Canopy Coverage



Paving Surface Coverage



Average Daily High Temperature



TTF Dallas Urban Heat Island Study

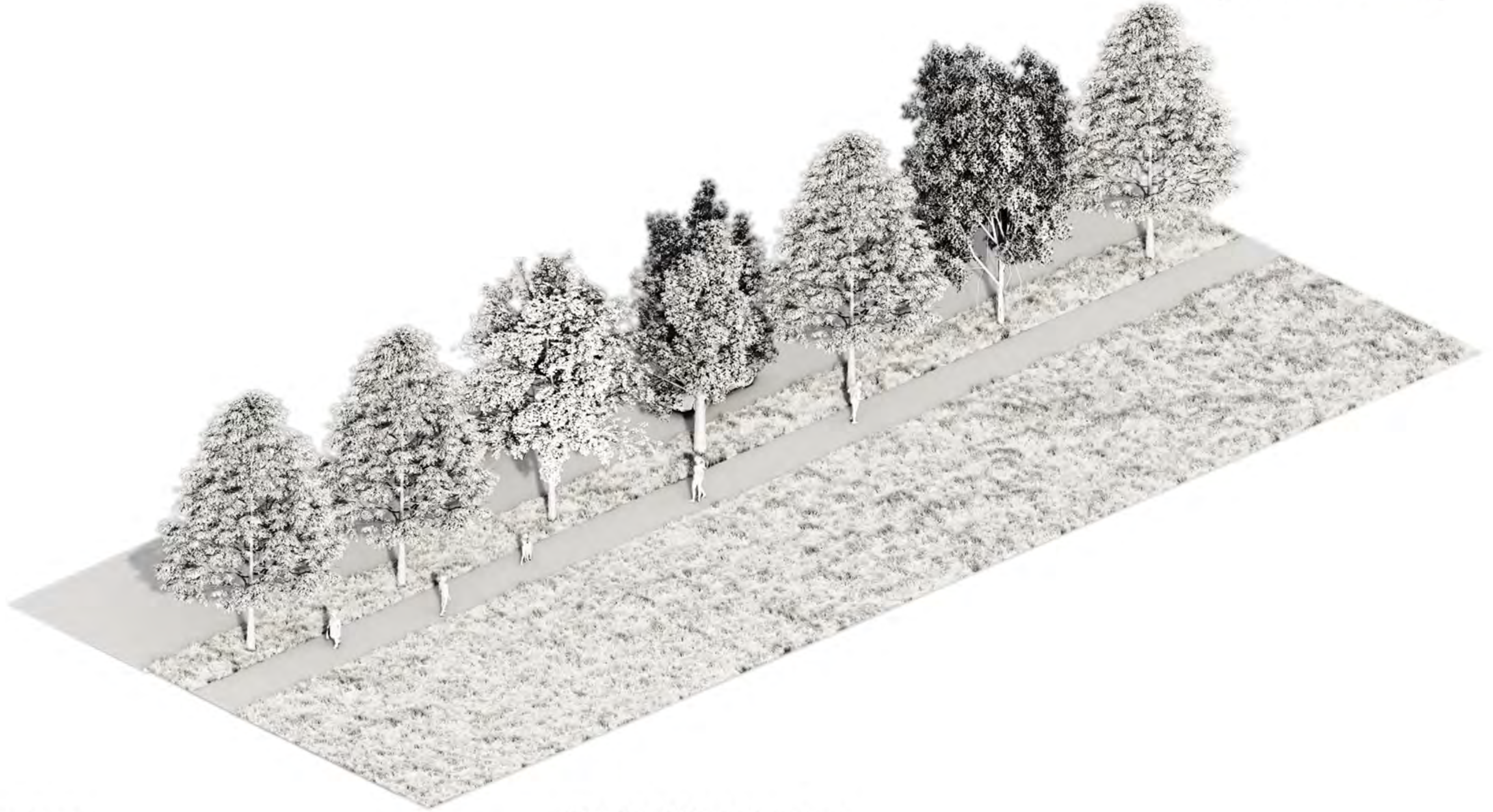
Where do people avoid walking or standing due to heat?





fieldoperations

Typical Streetscape



fieldoperations

Typical Streetscape



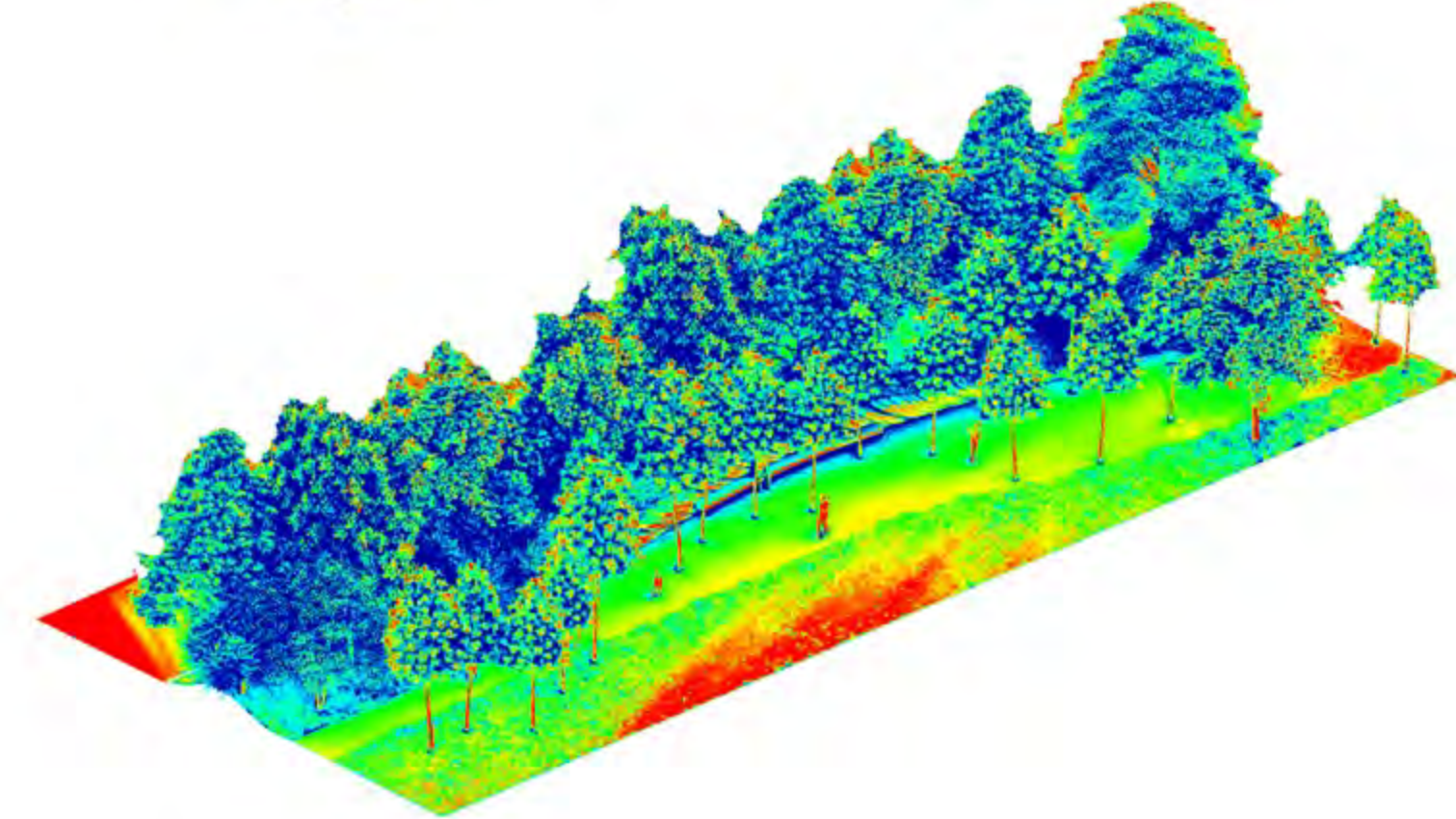
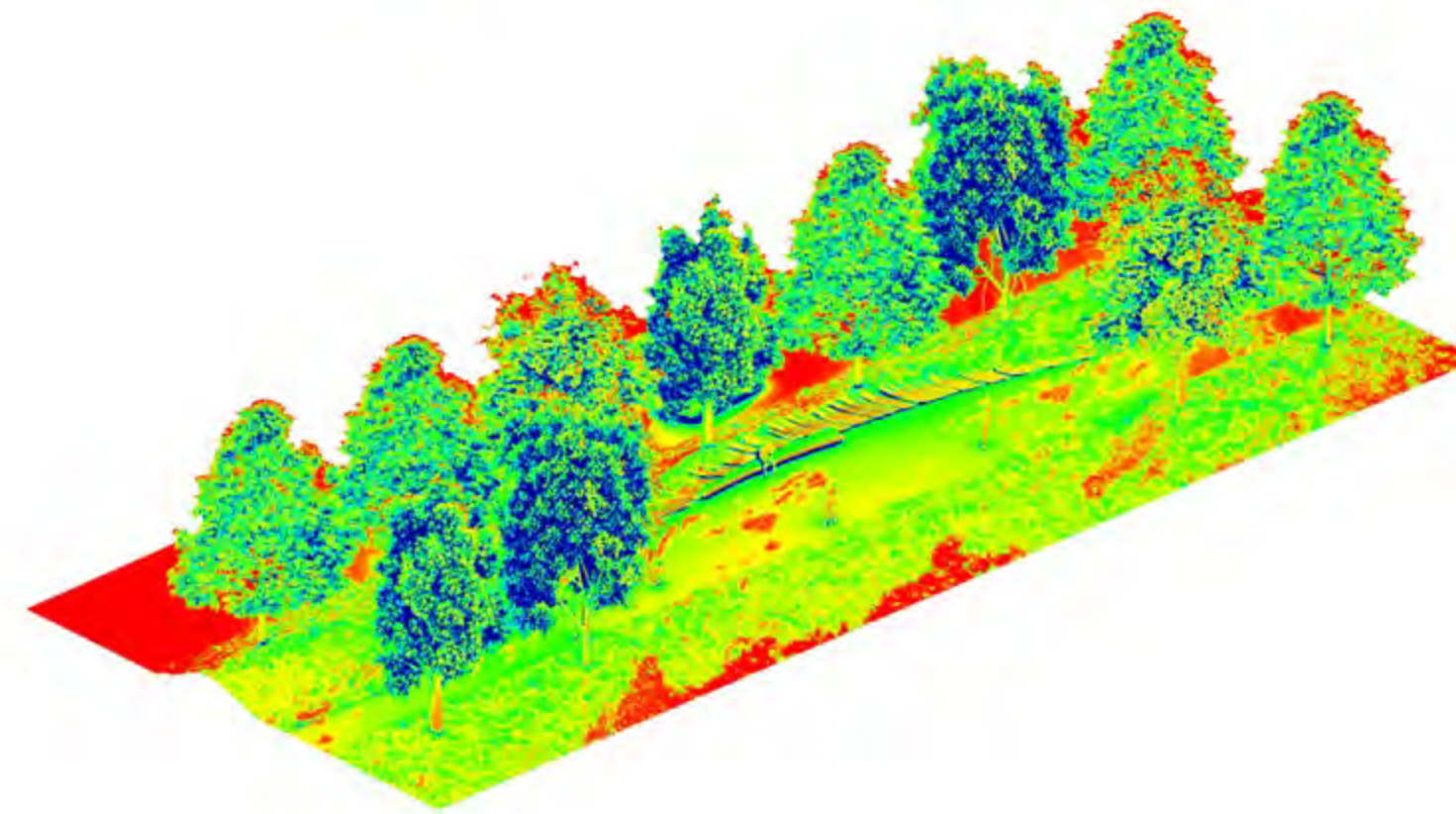
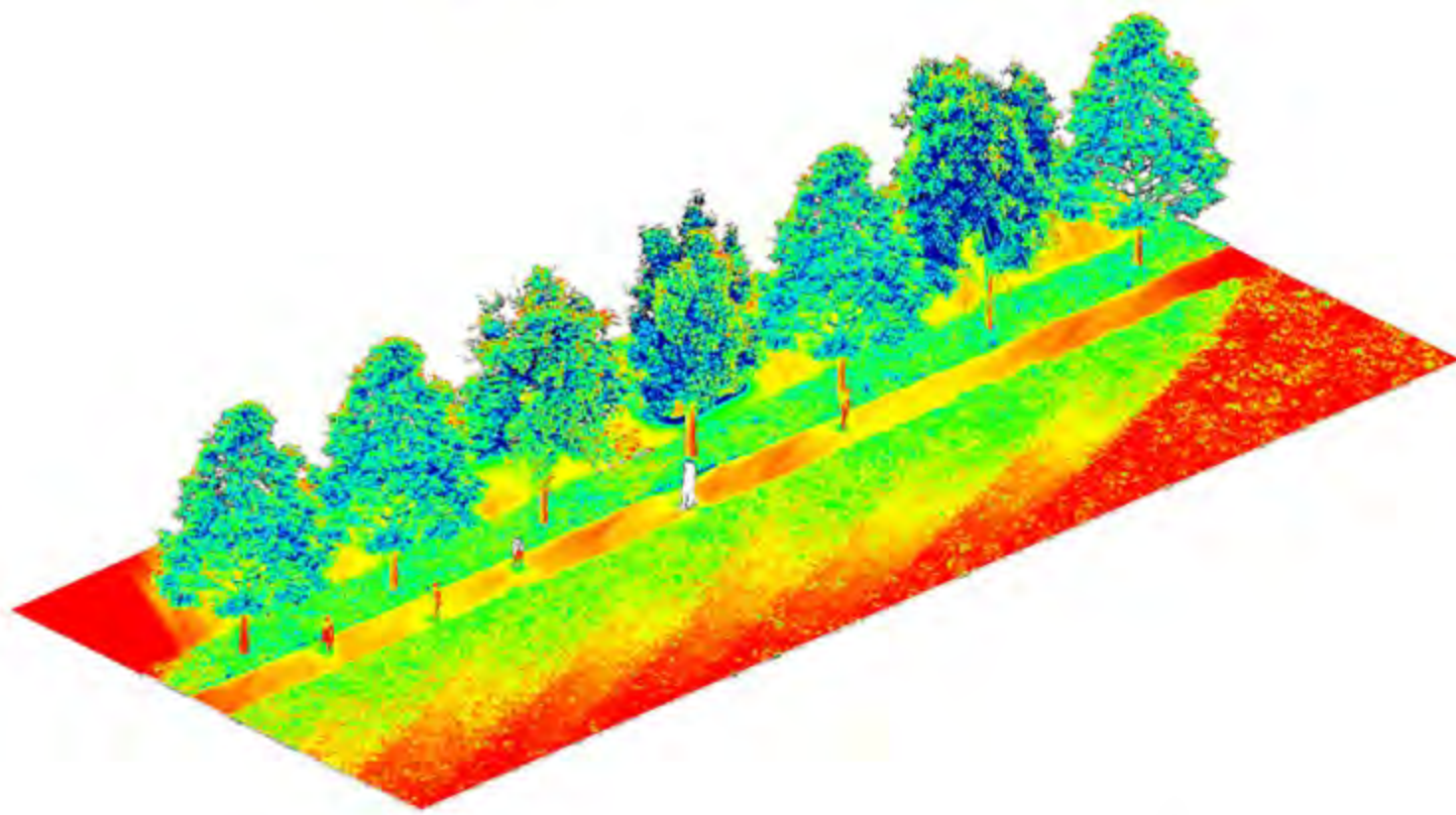
fieldoperations

Tree Groves



fieldoperations

Tree Groves



Typical Streetscape (Single Row)

- Follows Complete Streets Planting Guidelines
- Increases Tree Sizes (from 2"-6" caliper)

Double Row of Trees

- Adds Second Row of Trees
- Increases Quantities of Trees
- Maintains Tree Size and Spacing of Option 1

Tree Groves

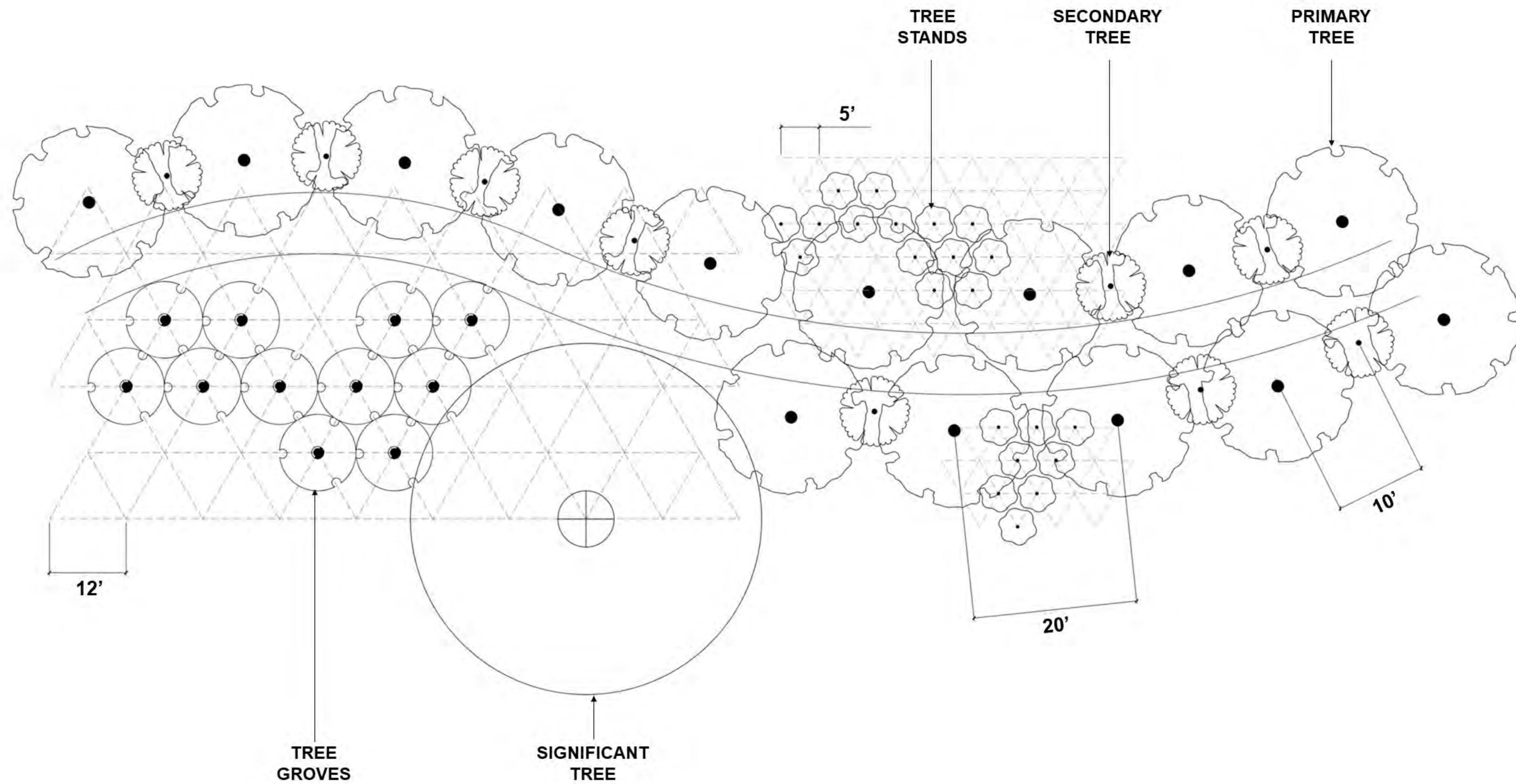
- Adds Trees of Various Sizes and Spacing along sidewalk





fieldoperations

Tree Groves for Maximum Shade and Cooling

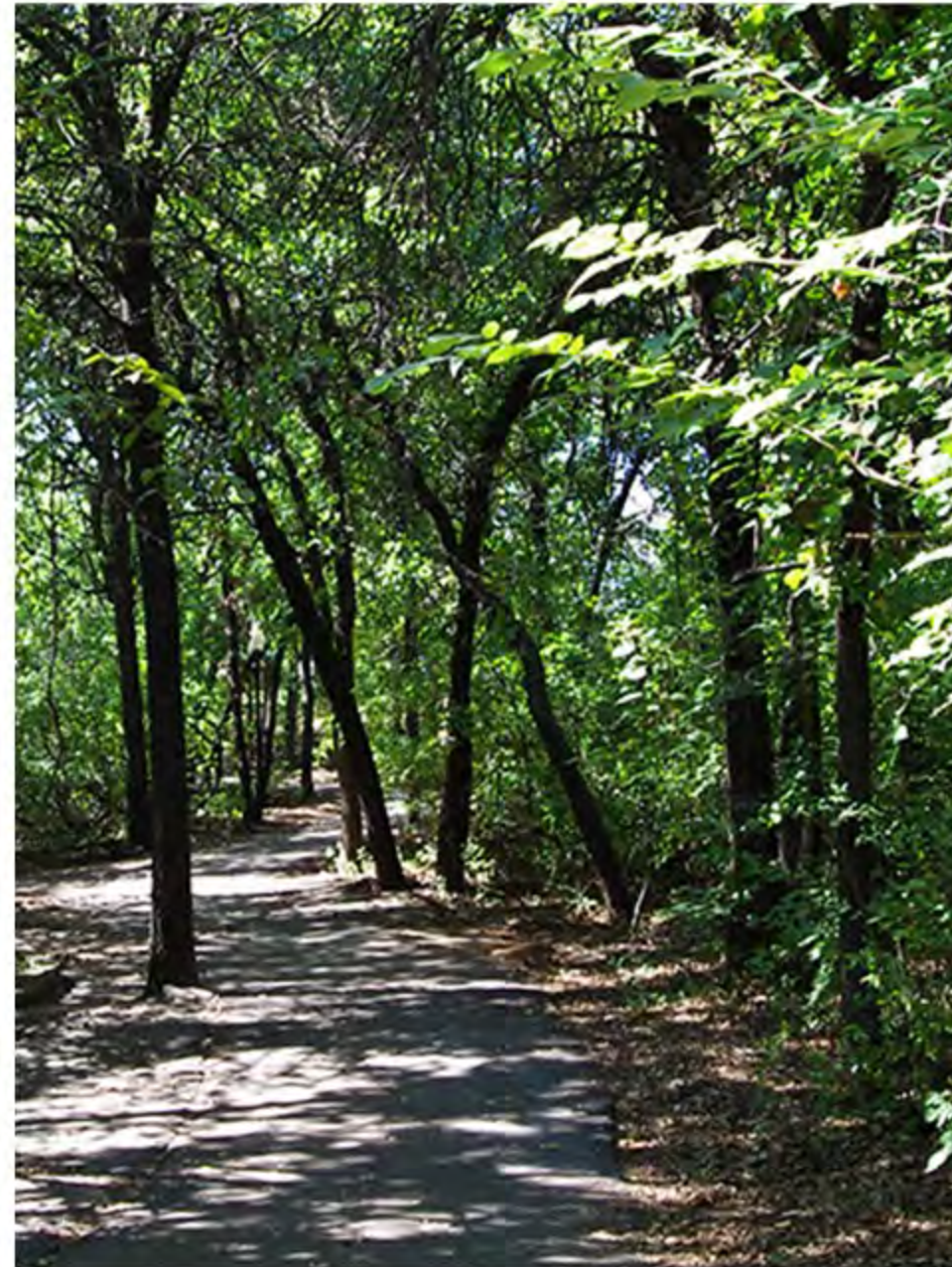


Low Terrace Forest



Shumard Oak, Elm,
Cottonwood, Pecan

Cross Timbers



Post Oak, Blackjack Oak, Hickory,
Pecan, Elm, ***Texas Persimmon***,
Honey Mesquite, Mexican Plum

Post Oak Savannah



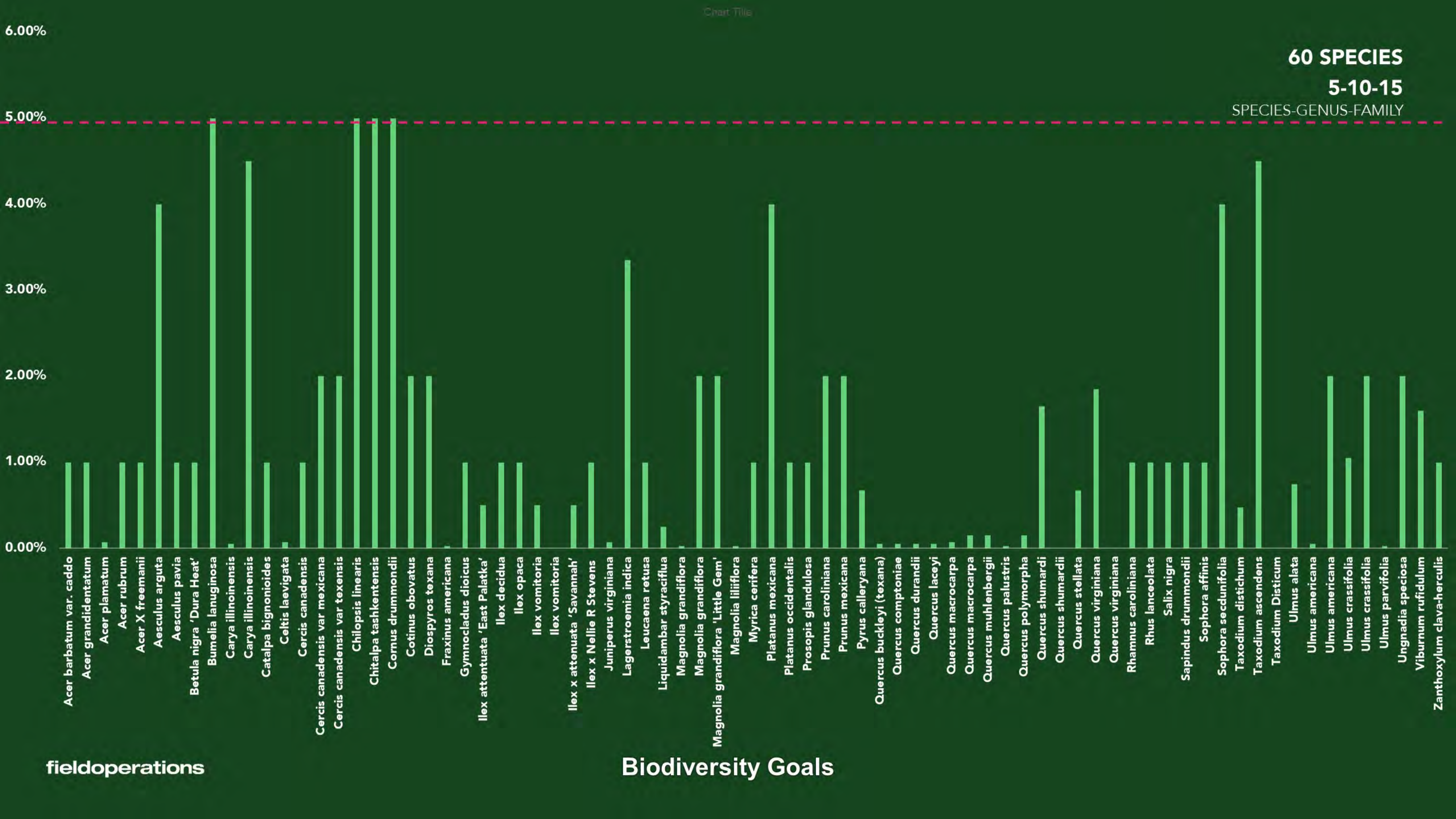
Post Oak, Live Oak, ***Mexican Plum***, ***Cedar Elm***, Eastern Red
Cedar

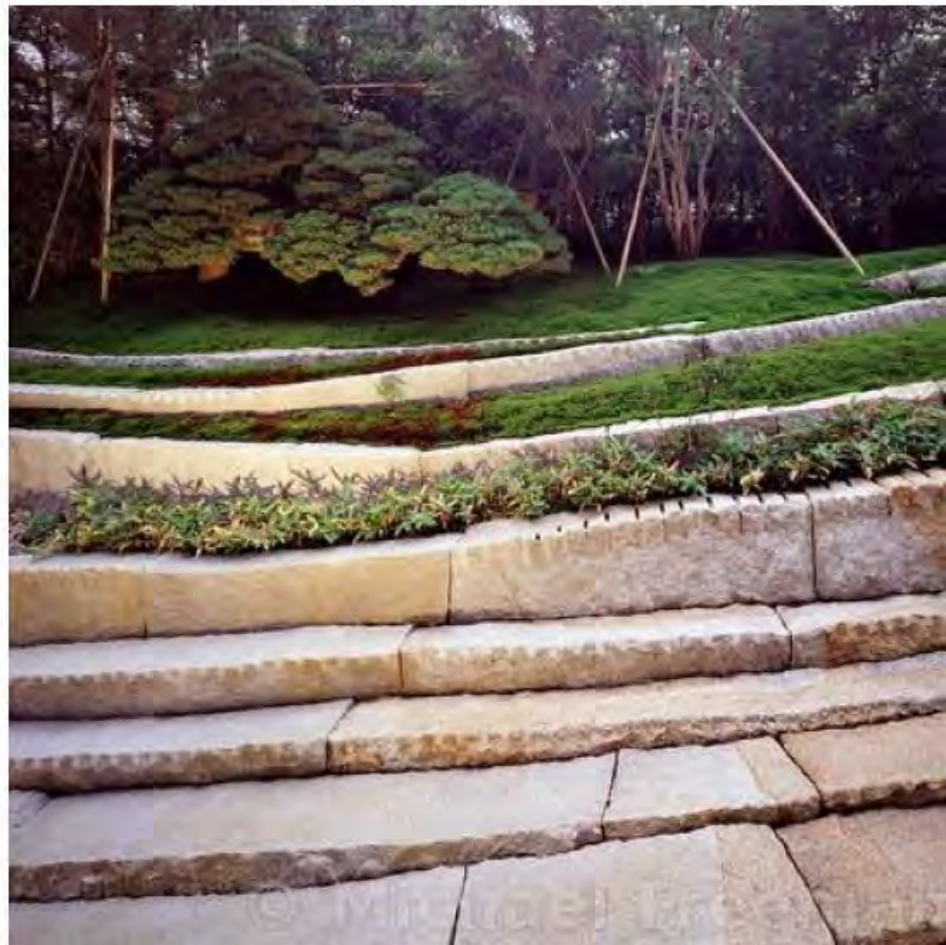
Blackland Prairie



Texas Buckeye, Live Oak, Black
Hickory, Cedar Elm, ***American Elm***

North Texas Plant Communities



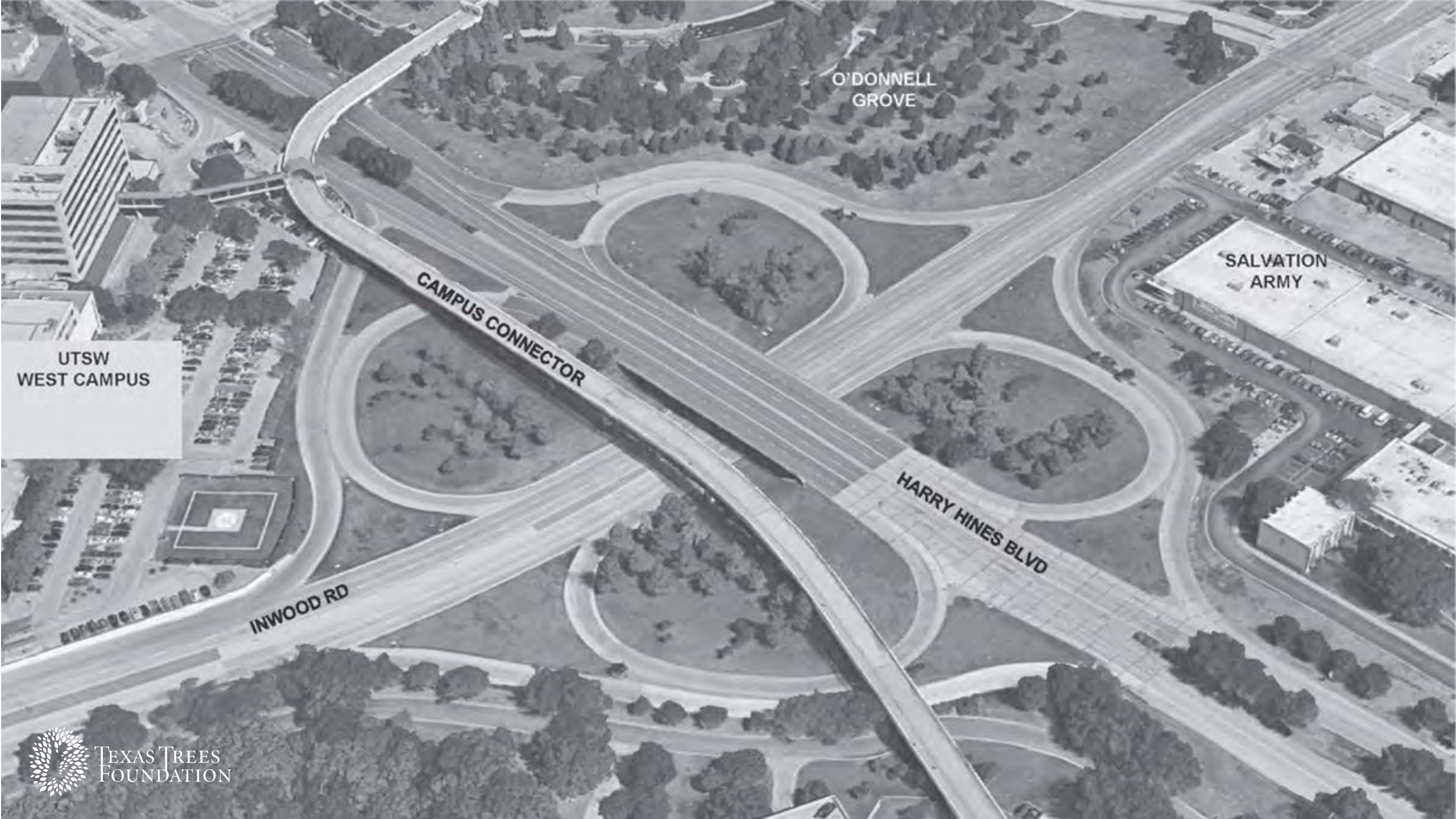




S W M D
TRANSFORMATION

 TEXAS TREES
FOUNDATION
fieldoperations

THE GREEN PARK



O'DONNELL
GROVE

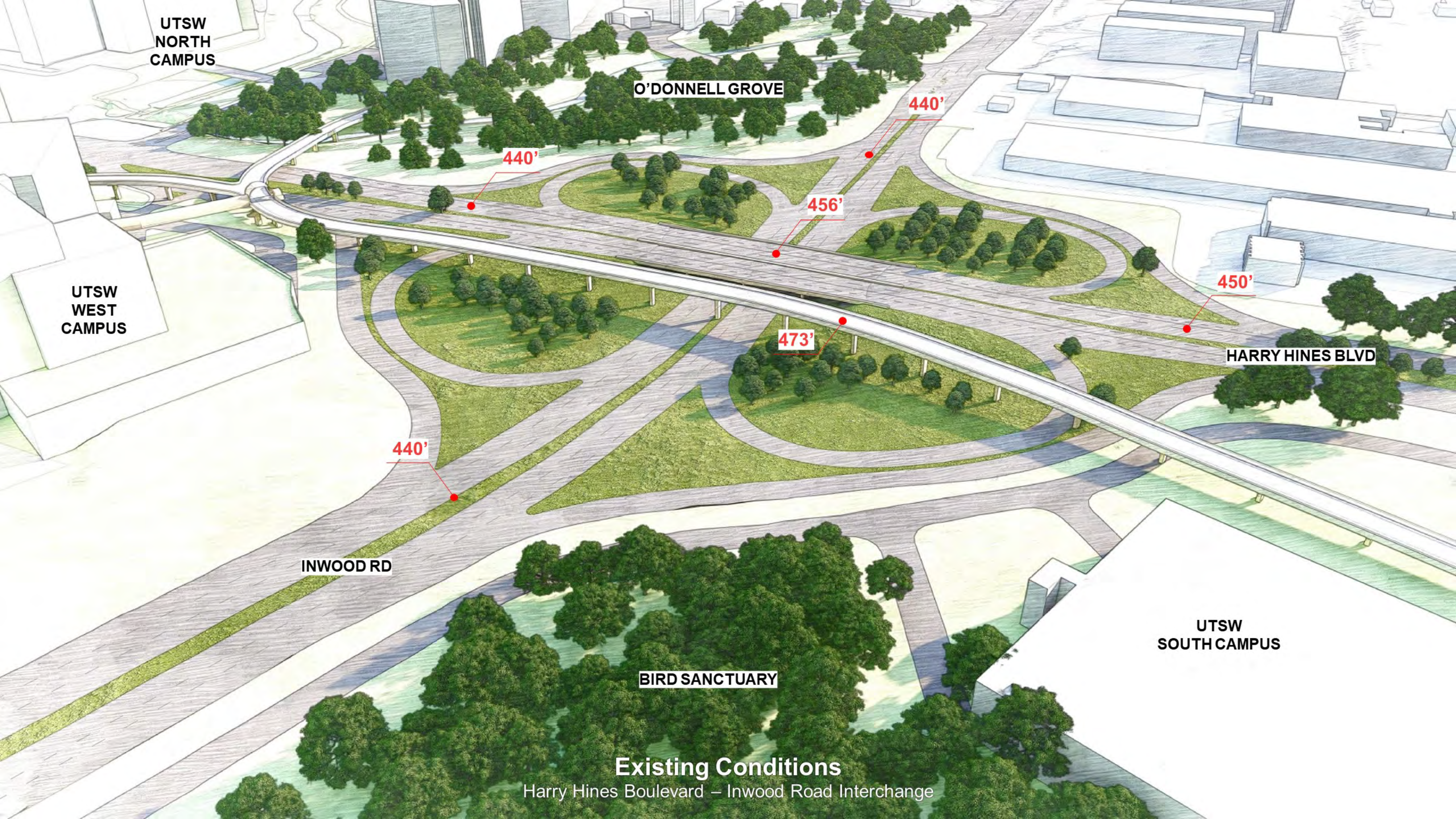
SALVATION
ARMY

HARRY HINES BLVD

CAMPUS CONNECTOR

INWOOD RD

UTSW
WEST CAMPUS



UTSW
NORTH
CAMPUS

O'DONNELL GROVE

440'

440'

456'

450'

HARRY HINES BLVD

473'

440'

INWOOD RD

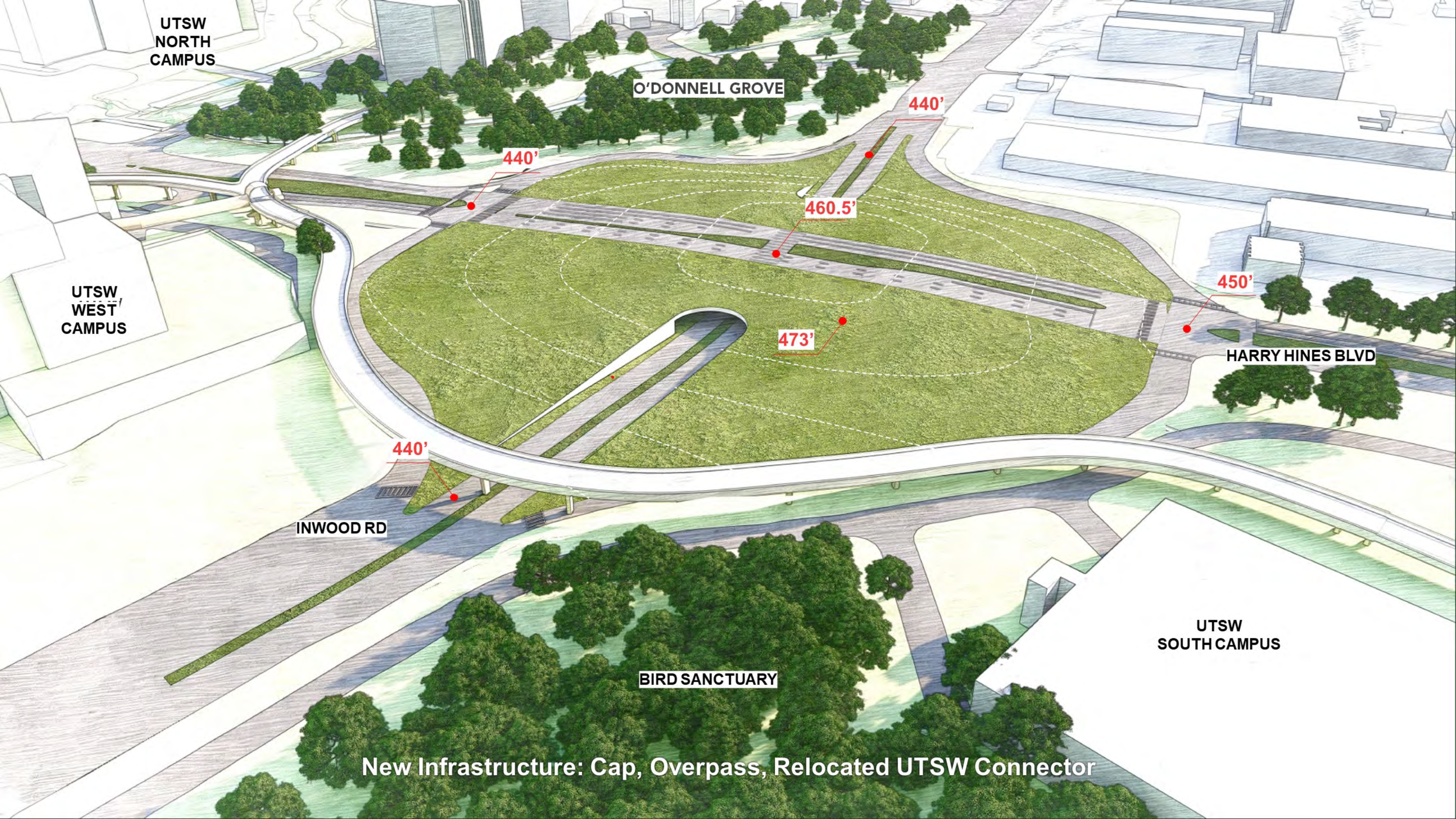
BIRD SANCTUARY

UTSW
SOUTH CAMPUS

Existing Conditions

Harry Hines Boulevard – Inwood Road Interchange

UTSW
WEST
CAMPUS



UTSW
NORTH
CAMPUS

O'DONNELL GROVE

440'

440'

460.5'

473'

450'

HARRY HINES BLVD

UTSW
WEST
CAMPUS

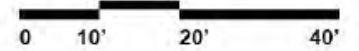
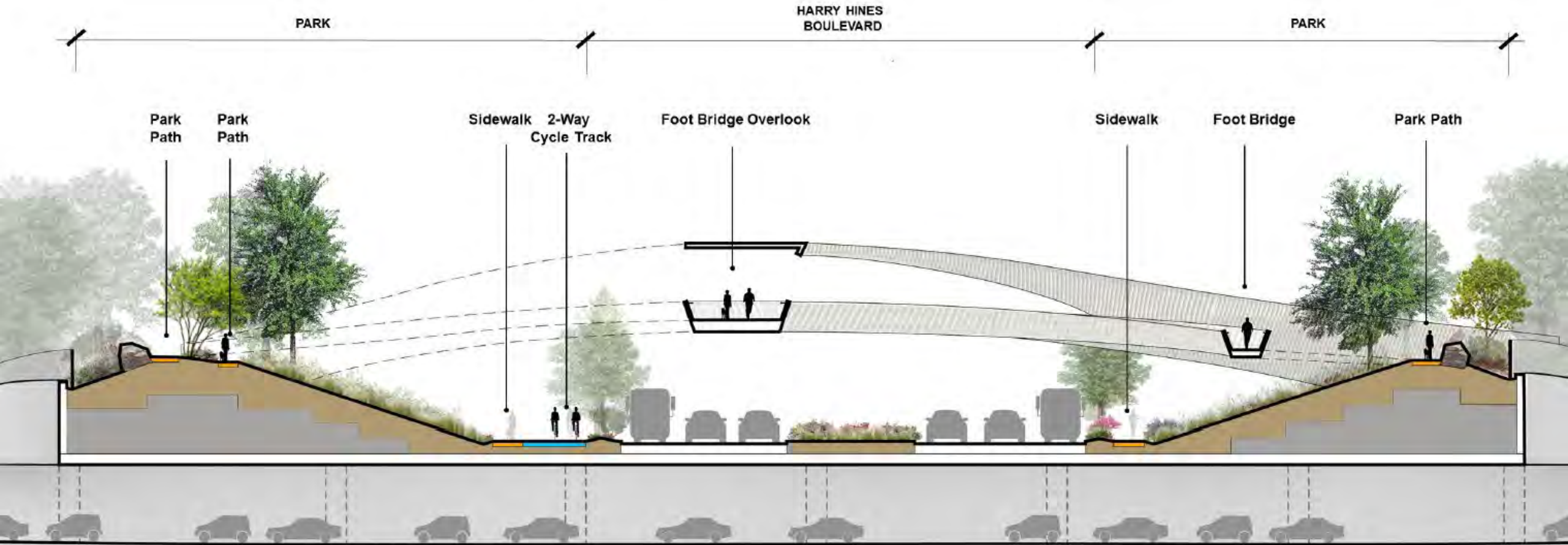
INWOOD RD

440'

BIRD SANCTUARY

UTSW
SOUTH CAMPUS

New Infrastructure: Cap, Overpass, Relocated UTSW Connector



Park Section Over Inwood Tunnel

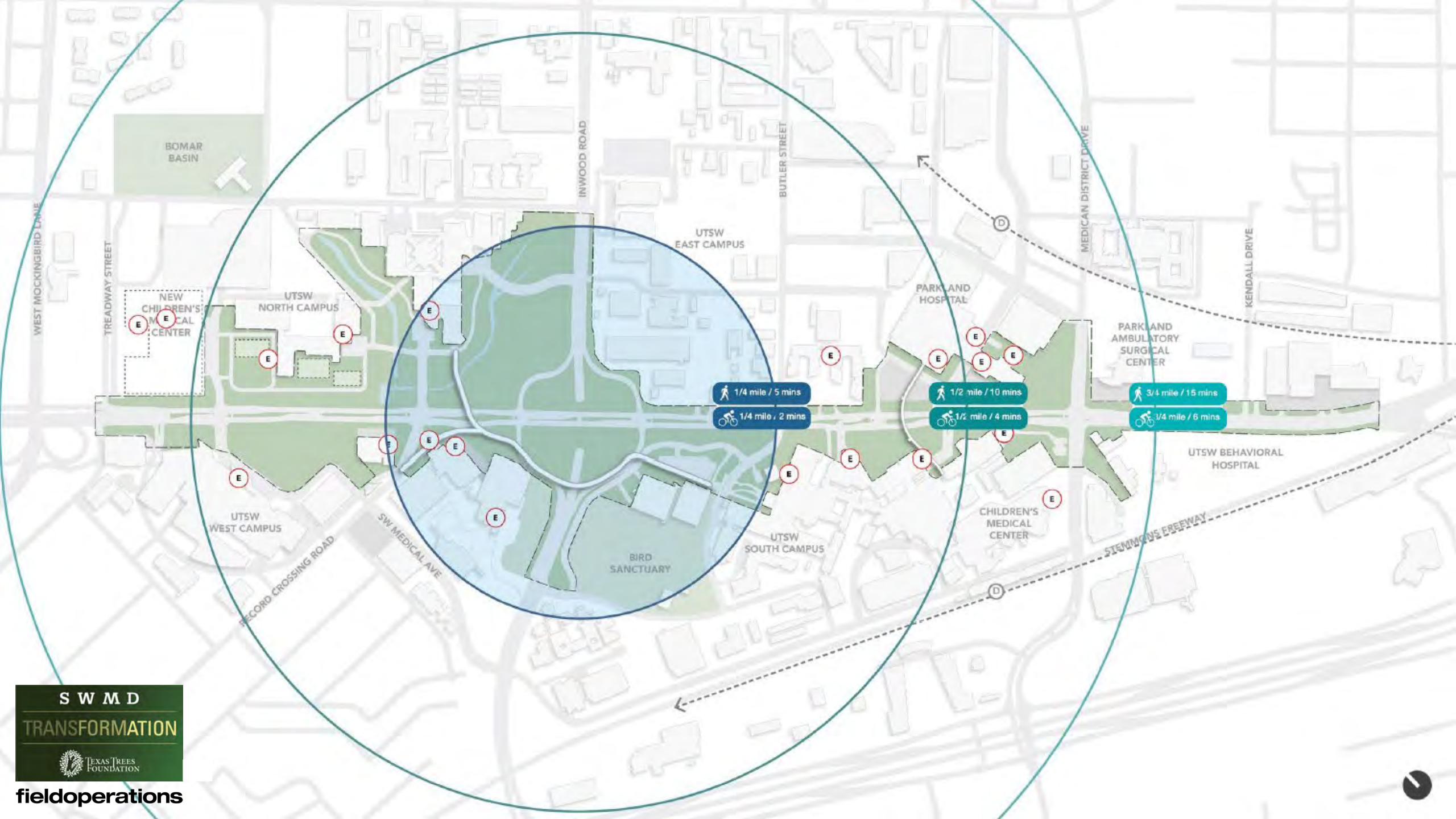




PEACEFUL & RESTORATIVE



SOCIAL & REJUVENATING





- KEY**
- 1 The Grove and Water Feature
 - 2 Food Truck Parking
 - 3 Campus Walk
 - 4 2-way Cycle Track
 - 5 Footbridge
 - 6 Hillside Meadow
 - 7 Overlook
 - 8 Escarpment Walk
 - 9 Gardens
 - 10 Hilltop Lawns
 - 11 The Balcony
 - 12 Connection to UTSW Connector
 - 13 Connection to UTSW Roof Garden



fieldoperations

Escarpment Walk







S W M D
TRANSFORMATION



TEXAS TREES
FOUNDATION

fieldoperations



fieldoperations

East Park Landing

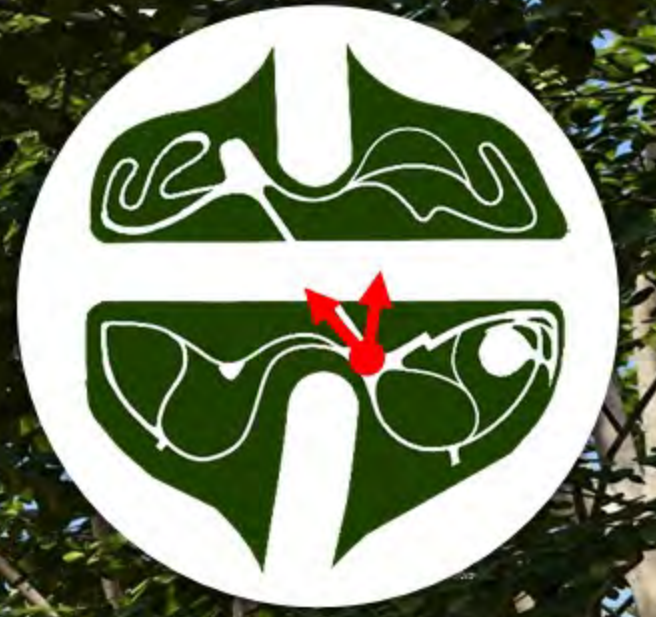


fieldoperations

Footbridge







fieldoperations

West Park Balcony and Landing



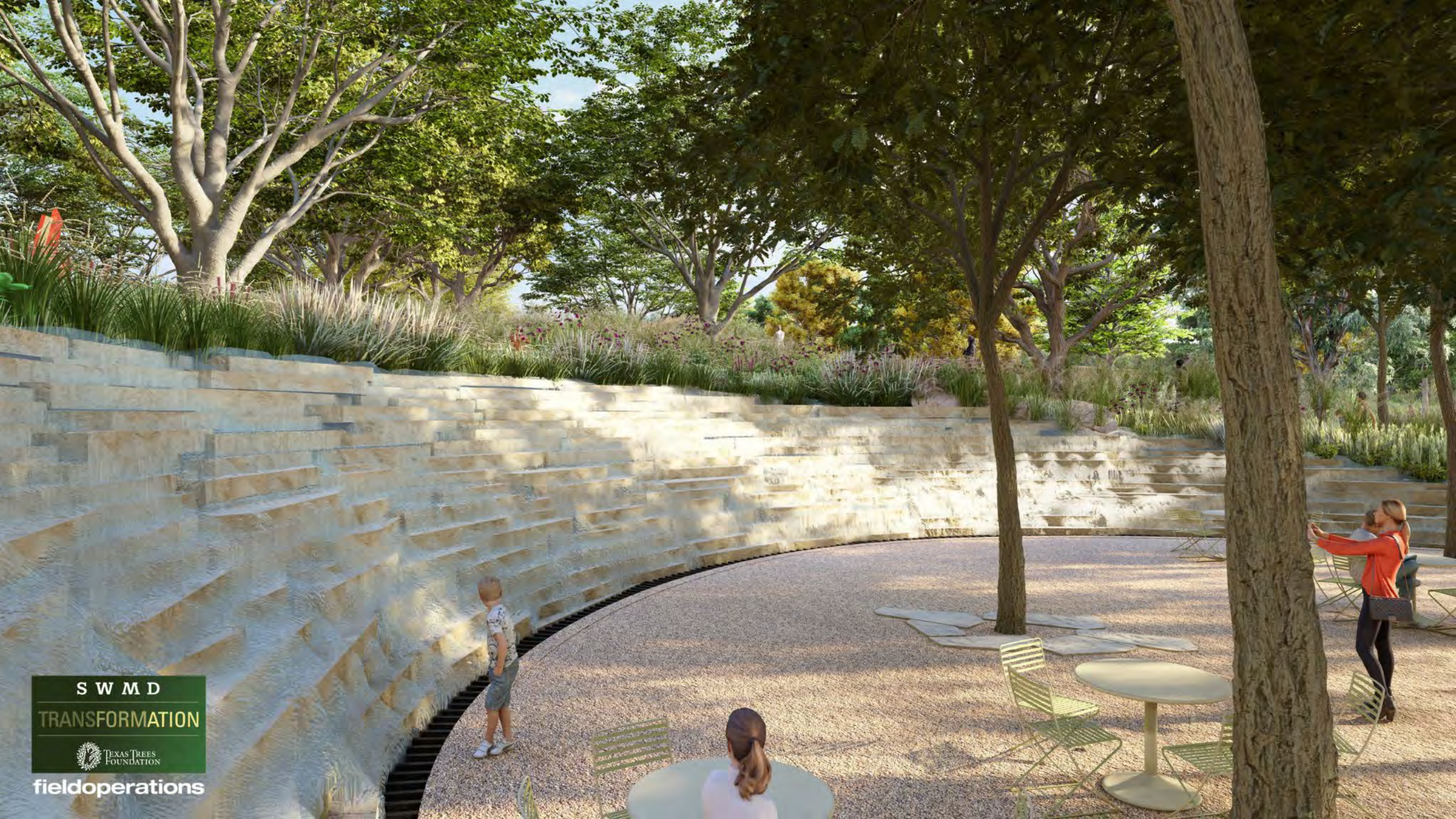
fieldoperations

Entry Grove



fieldoperations

Entry Grove and Food Trucks





fieldoperations

Hilltop Lawn

