

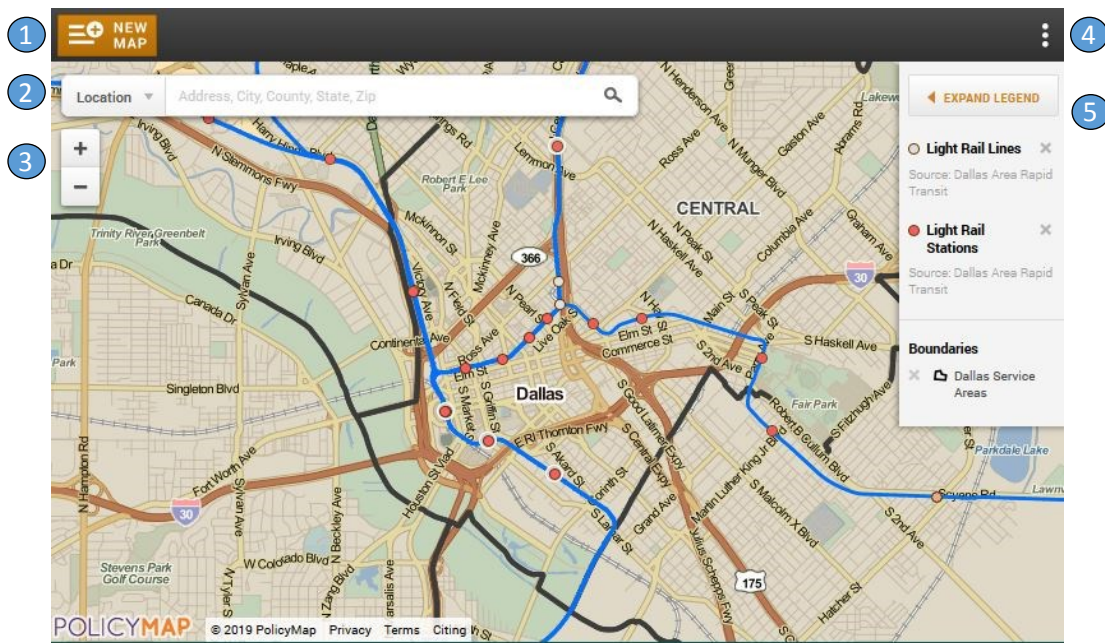
# Map My Neighborhood

A Guide + Helpful Tips

## How to use Map My Neighborhood

This guide will briefly show you how to use the features of Map My Neighborhood. Follow the screenshot diagram below, and its corresponding feature explanations, to learn the basics of the interface. There will also be a few helpful hints at the end to assist you in navigating the tool.

## Basic Interface Overview

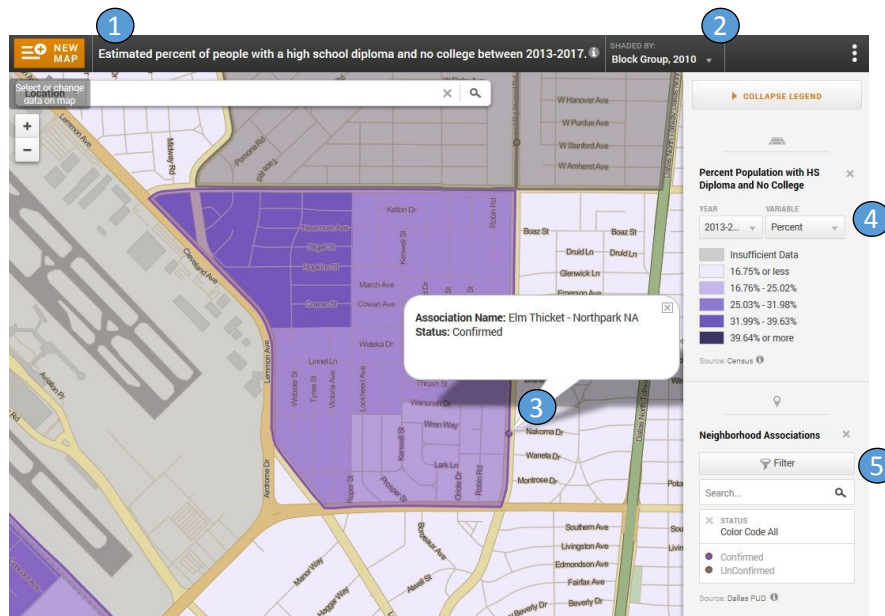


Map My Neighborhood home screen

- 1 **Data Menu:** Click here to view all of the available data sets, and select one to view on the map. Note: you can only have one layer on at a time but you can have multiple boundaries over a layer.
- 2 **Location Bar:** Type in full address to zoom to a specific place. Note: you must include city and state. Click the arrow next to “Location” to search for different kinds of geographies, like Census Tracts.
- 3 **Zoom in/out button:** Zooms in and out
- 4 **Print Button:** Click here to access the “print” option, which will download the current map as a PDF
- 5 **Legend:** Shows the layers that are currently turned on for your map. These are the default layers when you open up Map My Neighborhood. You can turn layers off by clicking the “X” to the left or right of each layer. Note: when you turn on a data layer, you have additional options to customize the data, including year, geography, and other filters.

## Getting the Most Out of Map My Neighborhood

Here are some additional hints and tips to learn more about the data in Map My Neighborhood and how to display the information according to your needs.



This map shows the percent of people with a high school diploma and no college just east of Love Field Airport. Note from the legend that the map also shows neighborhood associations. You can place boundaries on top of layers, but can only have one layer on at a time.

- 1 Data Title:** This box appears when you turn on a data layer, describing what the data is and what years it covers. If you click on this box, you will see additional description of the data.
- 2 Geography Tab:** This box tells you at what geography your data is being displayed. Much of the data can be displayed at many levels, including block groups (smaller), census tracts (larger), or zip codes, and more.
- 3 Boundary Description:** To learn more about a boundary on the map, click on the small box located somewhere on its perimeter.
- 4 Legend Options: Year and Variable:** On many data sets, you can change the year of the data. You can also change the “variable”, meaning as a number, or percent, etc.
- 5 Legend Options: Filter:** On the lines and boundaries, you can “filter” the data based on its attributes. Attributes will differ between data sets. In the case of Neighborhood Associations, as shown on the map above, you can show Neighborhood Associations that have been confirmed and registered with the Department of Planning + Urban Design, the ones that have not been confirmed, or all (which is the default).