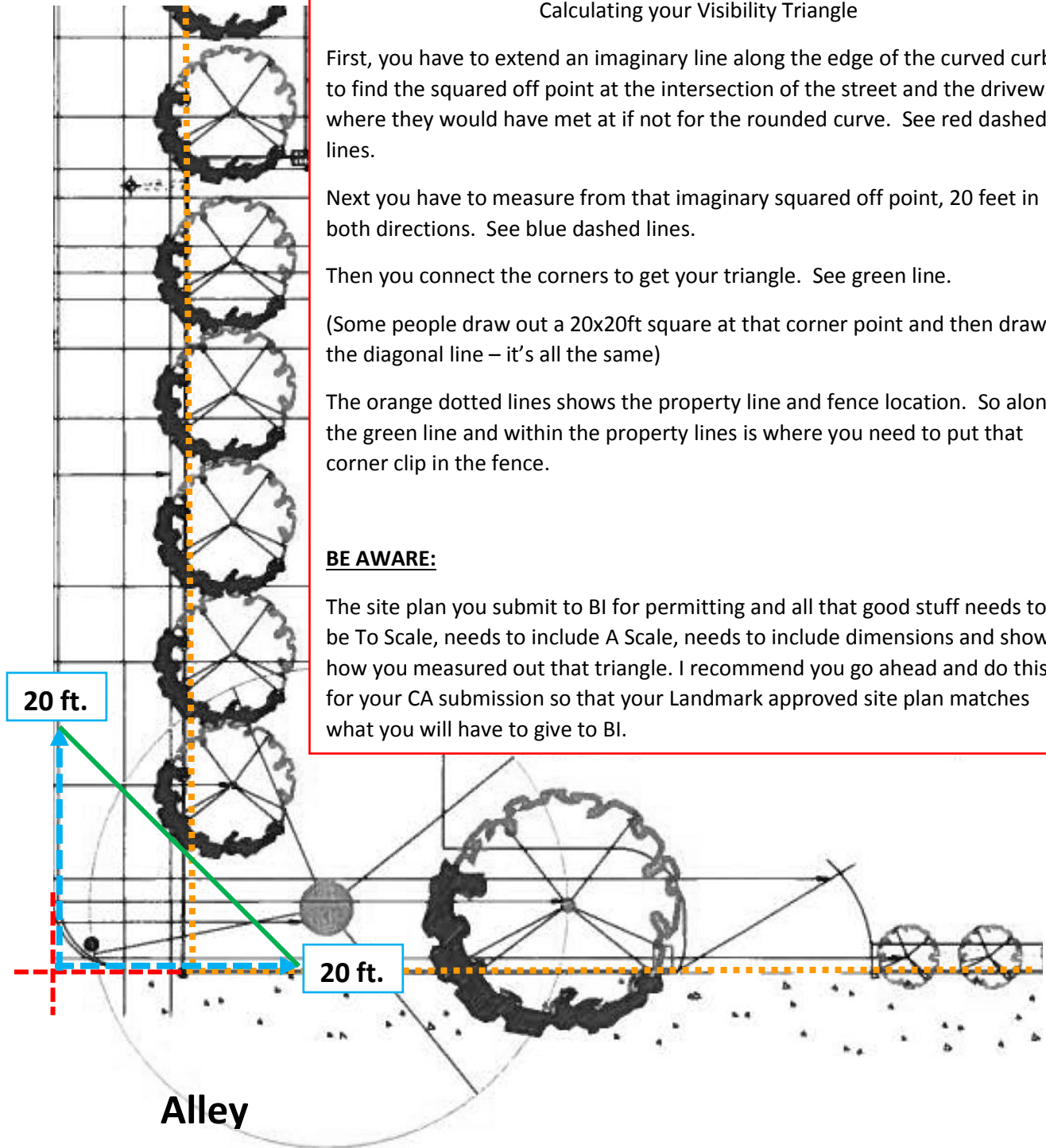


McMillan Ave



Calculating your Visibility Triangle

First, you have to extend an imaginary line along the edge of the curved curb to find the squared off point at the intersection of the street and the driveway where they would have met at if not for the rounded curve. See red dashed lines.

Next you have to measure from that imaginary squared off point, 20 feet in both directions. See blue dashed lines.

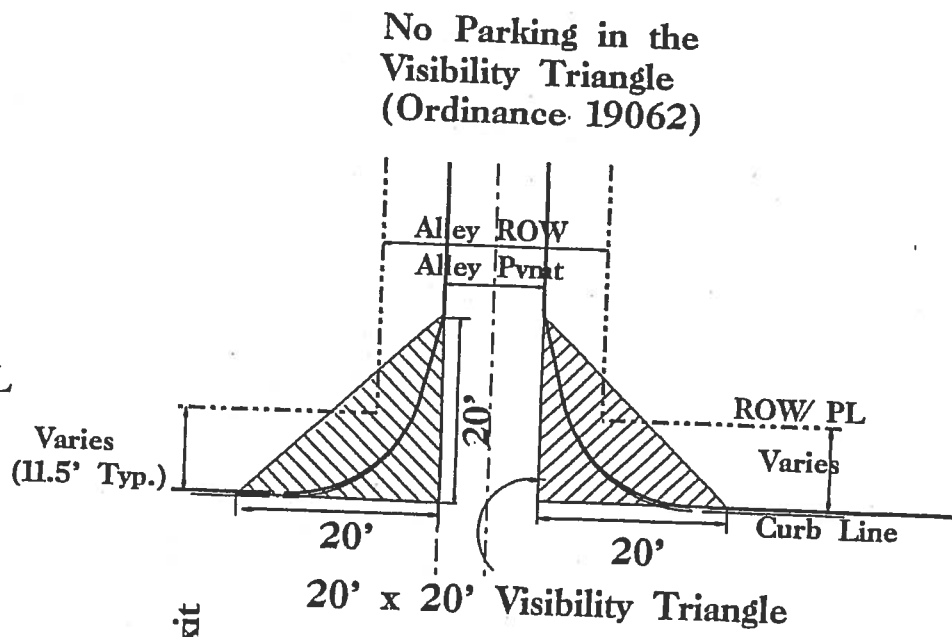
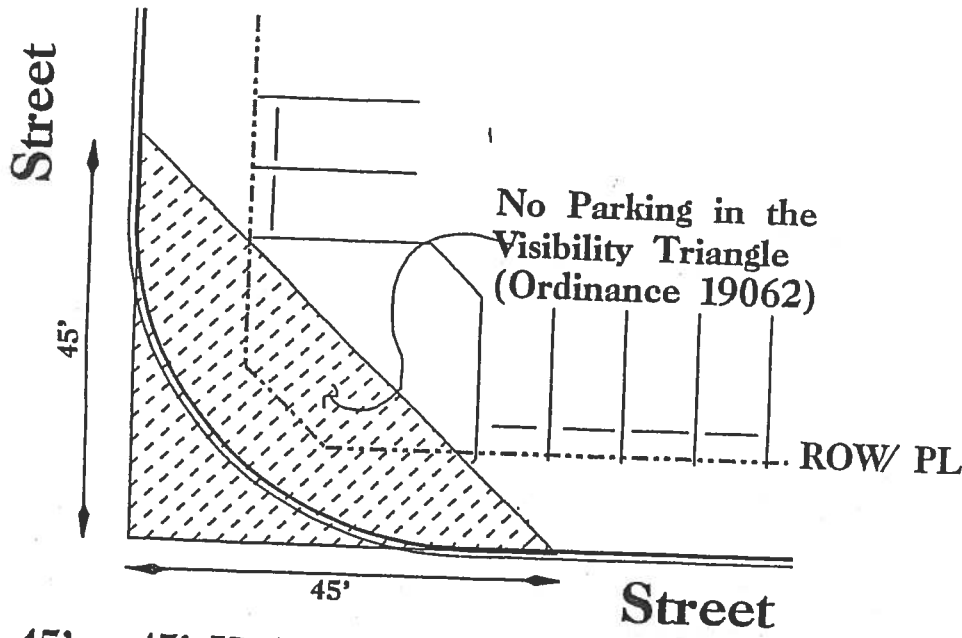
Then you connect the corners to get your triangle. See green line.

(Some people draw out a 20x20ft square at that corner point and then draw the diagonal line – it's all the same)

The orange dotted lines shows the property line and fence location. So along the green line and within the property lines is where you need to put that corner clip in the fence.

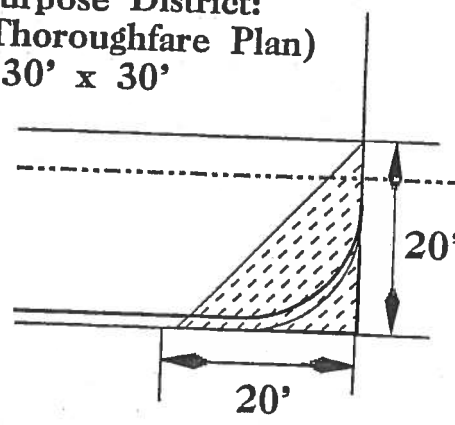
BE AWARE:

The site plan you submit to BI for permitting and all that good stuff needs to be To Scale, needs to include A Scale, needs to include dimensions and show how you measured out that triangle. I recommend you go ahead and do this for your CA submission so that your Landmark approved site plan matches what you will have to give to BI.

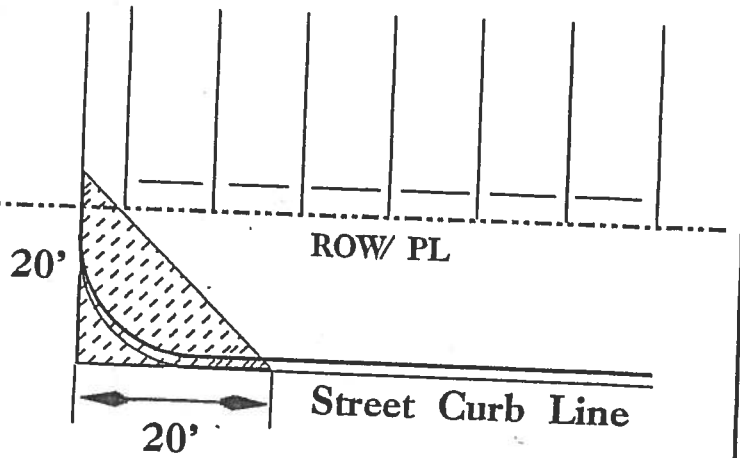


- 45' x 45' Visibility Triangle in all Zoning except:**
- CBD - Central Business District
 - PD 269 (Deep Ellum / Near Eastside District)
 - PD 225 (State - Thomas Special Purpose District)
 - PD 193 (Oak Lawn Special Purpose District: only for streets listed in the Thoroughfare Plan) where the visibility triangle is 30' x 30'

No Parking in the Visibility Triangle (Ordinance 19062)



Driveway Entrance / Exit



- Scale: 1" = 20' -



Figure 4: Visibility Triangle Guidelines

Department of Development Services / Engineering Division



LUCAS AVENUE
(50' R.O.W.)

(PLAT BEARING)

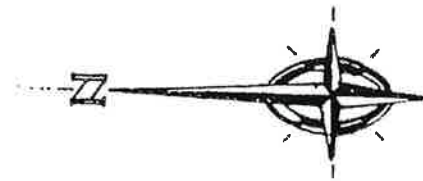
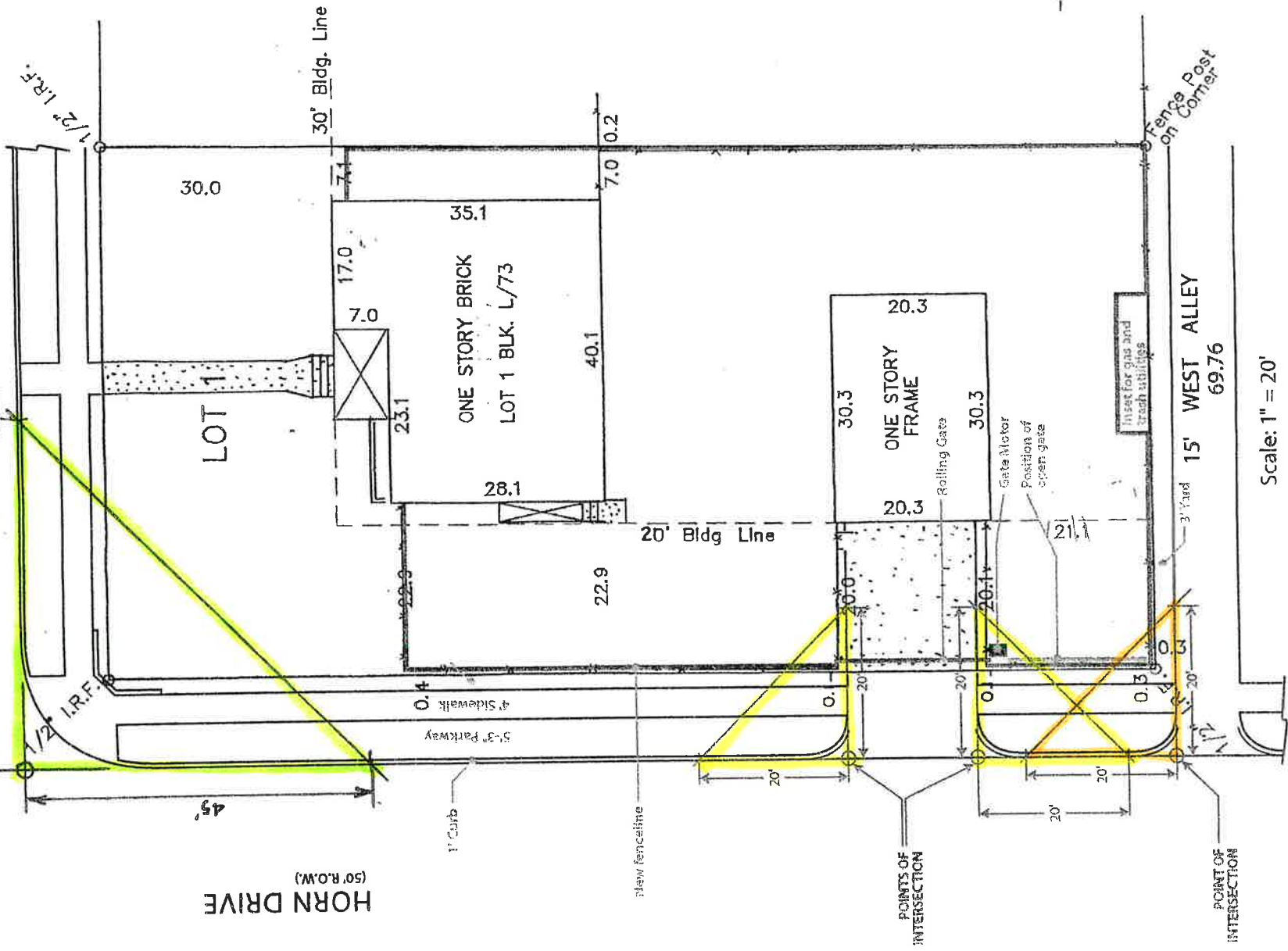
EAST
70.24

45'

1/2" I.R.F.

HORN DRIVE
(50' R.O.W.)

45'



15' WEST ALLEY
69.76

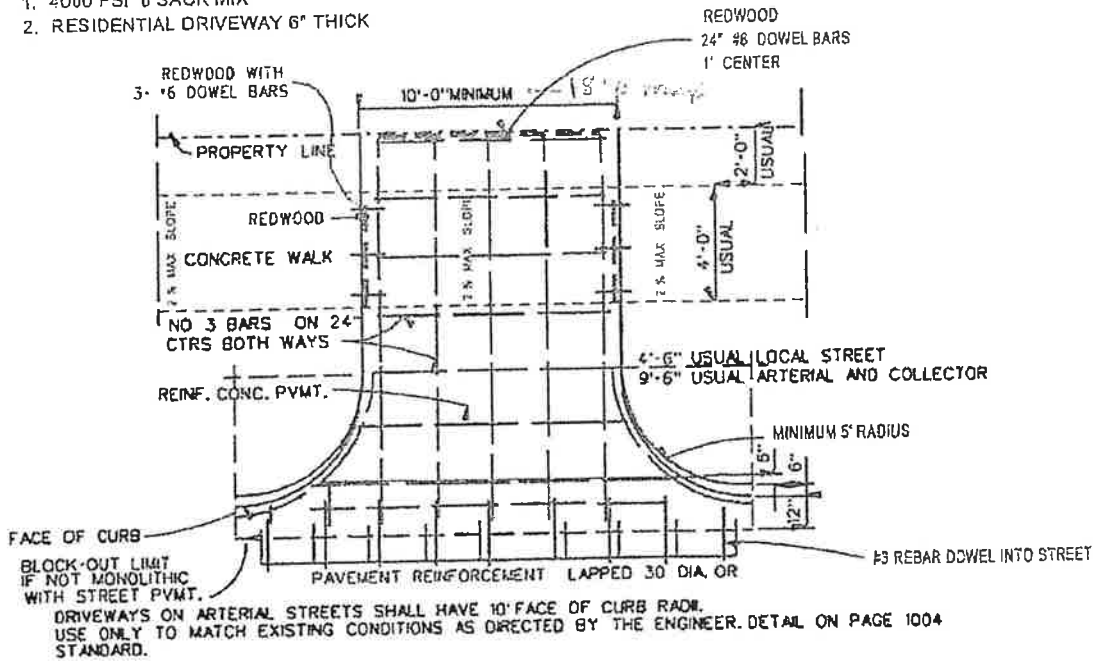
Scale: 1" = 20'

POINTS OF INTERSECTION

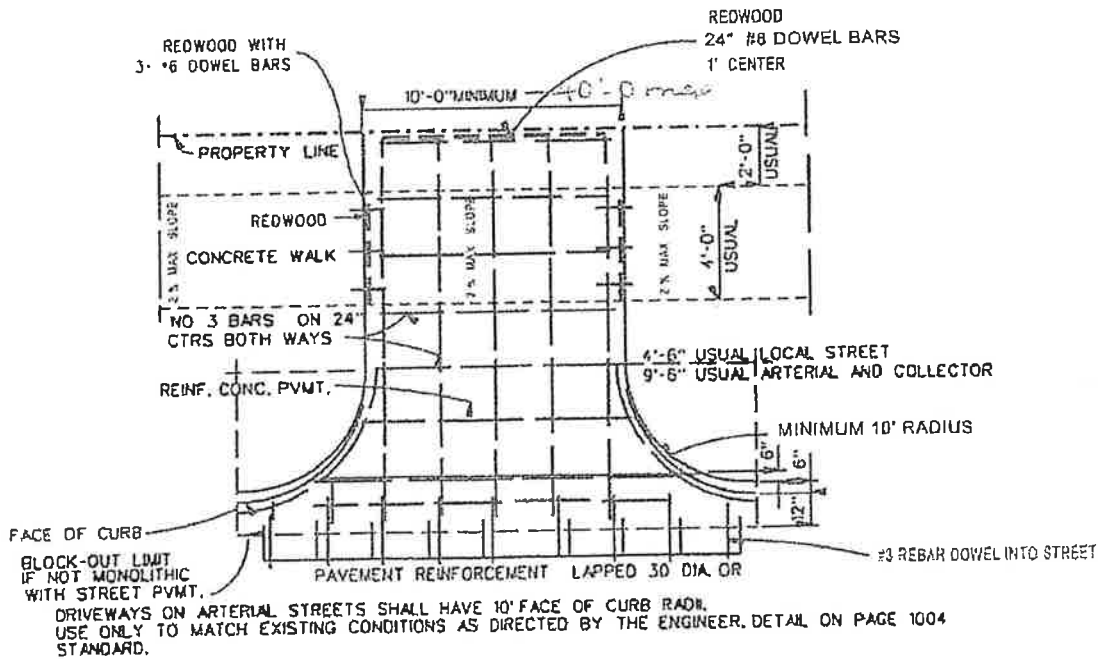
POINT OF INTERSECTION

NOTE:

1. 4000 PSI 6 SACK MIX
2. RESIDENTIAL DRIVEWAY 6" THICK



RESIDENTIAL DRIVEWAY DETAILS



COMMERCIAL DRIVEWAY DETAILS

Sect. 43-95

NOTE:

1. 4000 PSI 6 SACK MIX
2. COMMERCIAL DRIVEWAY 8" THICK