



# Sanitation



## Brush and Bulky Items

### 2025 Collection Calendar

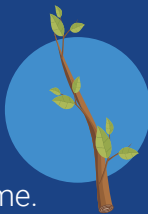


SCAN FOR MORE INFO



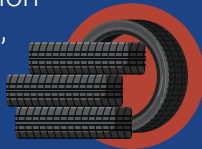
#### Accepted Items

Shrubs and tree limbs (max 10 ft long, 8 in diameter), bagged leaves, furniture, most appliances, mattresses, and other bulky items from your home.



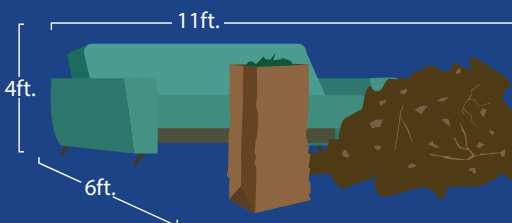
#### Items NOT Accepted

Tires, electronics, construction debris, hazardous materials, chemicals, paints, and refrigerant-based (Freon) appliances.



#### How Much Can I Set Out

A maximum of 10 cubic yards of brush and bulky items can be set out each month. Customers get a once-annual 20 cubic yard exemption. Visit [Dallas.gov/sanitation](https://dallas.gov/sanitation) for more details on how to claim your exemption.



#### When Is My Collection Week

Brush and bulky items are collected once a month. Please place your items at the curb between Thursday and Sunday before your scheduled collection week. To find your week, visit [Dallas.gov/sanitation](https://dallas.gov/sanitation) or call 3-1-1. Flip the page to see the 2025 brush and bulky item collection calendar.

#### Other Disposal Options

Dallas residents can drop off waste at the City's landfill, transfer stations, and the Dallas County's Home Chemical Collection Center for free with proof of residency. Visit [Dallas.gov/sanitation](https://dallas.gov/sanitation) for locations, rules, and hours.

#### Dallas Sanitation Services App

Download the FREE "Dallas Sanitation Services" app to get reminders via push notifications, email, or text.

#### Learn More

Find more detailed information about brush and bulky item collection services in your neighborhood by visiting [Dallas.gov/Sanitation](https://dallas.gov/Sanitation).

# Brush & Bulky Items 2025 Collection Calendar



1<sup>st</sup> Monday

2<sup>nd</sup> Monday

3<sup>rd</sup> Monday

4<sup>th</sup> Monday

No Collection

Set out up to 10 cubic yards of brush and bulky items the Thursday through Sunday before your collection week. For more information, please visit [Dallas.gov/Sanitation](https://dallas.gov/Sanitation).

## January

Su	Mo	Tu	We	Th	Fr	Sa
29	<del>30</del>	<del>31</del>	1	2	3	4
5	6	7	8	9	10	11
12	13	14	15	16	17	18
19	20	21	22	23	24	25
26	27	28	29	30	31	1

## February

Su	Mo	Tu	We	Th	Fr	Sa
26	27	28	29	30	31	1
2	3	4	5	6	7	8
9	10	11	12	13	14	15
16	17	18	19	20	21	22
23	24	25	26	27	28	1

## March

Su	Mo	Tu	We	Th	Fr	Sa
23	24	25	26	27	28	1
2	3	4	5	6	7	8
9	10	11	12	13	14	15
16	17	18	19	20	21	22
23	24	25	26	27	28	29
30	<del>31</del>					

## April

Su	Mo	Tu	We	Th	Fr	Sa
30	<del>31</del>	1	2	3	4	5
6	7	8	9	10	11	12
13	14	15	16	17	18	19
20	21	22	23	24	25	26
27	28	29	30	1	2	3

## May

Su	Mo	Tu	We	Th	Fr	Sa
27	28	29	30	1	2	3
4	5	6	7	8	9	10
11	12	13	14	15	16	17
18	19	20	21	22	23	24
25	26	27	28	29	30	31

## June

Su	Mo	Tu	We	Th	Fr	Sa
1	2	3	4	5	6	7
8	9	10	11	12	13	14
15	16	17	18	19	20	21
22	23	24	25	26	27	28
29	<del>30</del>					

## July

Su	Mo	Tu	We	Th	Fr	Sa
29	<del>30</del>	1	2	3	4	5
6	7	8	9	10	11	12
13	14	15	16	17	18	19
20	21	22	23	24	25	26
27	28	29	30	31	1	2

## August

Su	Mo	Tu	We	Th	Fr	Sa
27	28	29	30	31	1	2
3	4	5	6	7	8	9
10	11	12	13	14	15	16
17	18	19	20	21	22	23
24	25	26	27	28	29	30
31						

## September

Su	Mo	Tu	We	Th	Fr	Sa
31	1	2	3	4	5	6
7	8	9	10	11	12	13
14	15	16	17	18	19	20
21	22	23	24	25	26	27
28	<del>29</del>	<del>30</del>				

## October

Su	Mo	Tu	We	Th	Fr	Sa
28	<del>29</del>	<del>30</del>	1	2	3	4
5	6	7	8	9	10	11
12	13	14	15	16	17	18
19	20	21	22	23	24	25
26	27	28	29	30	31	

## November

Su	Mo	Tu	We	Th	Fr	Sa
26	27	28	29	30	31	1
2	3	4	5	6	7	8
9	10	11	12	13	14	15
16	17	18	19	20	21	22
23	24	25	26	27	28	29

## December

Su	Mo	Tu	We	Th	Fr	Sa
30	1	2	3	4	5	6
7	8	9	10	11	12	13
14	15	16	17	18	19	20
21	22	23	24	25	26	27
28	<del>29</del>	<del>30</del>	<del>31</del>			