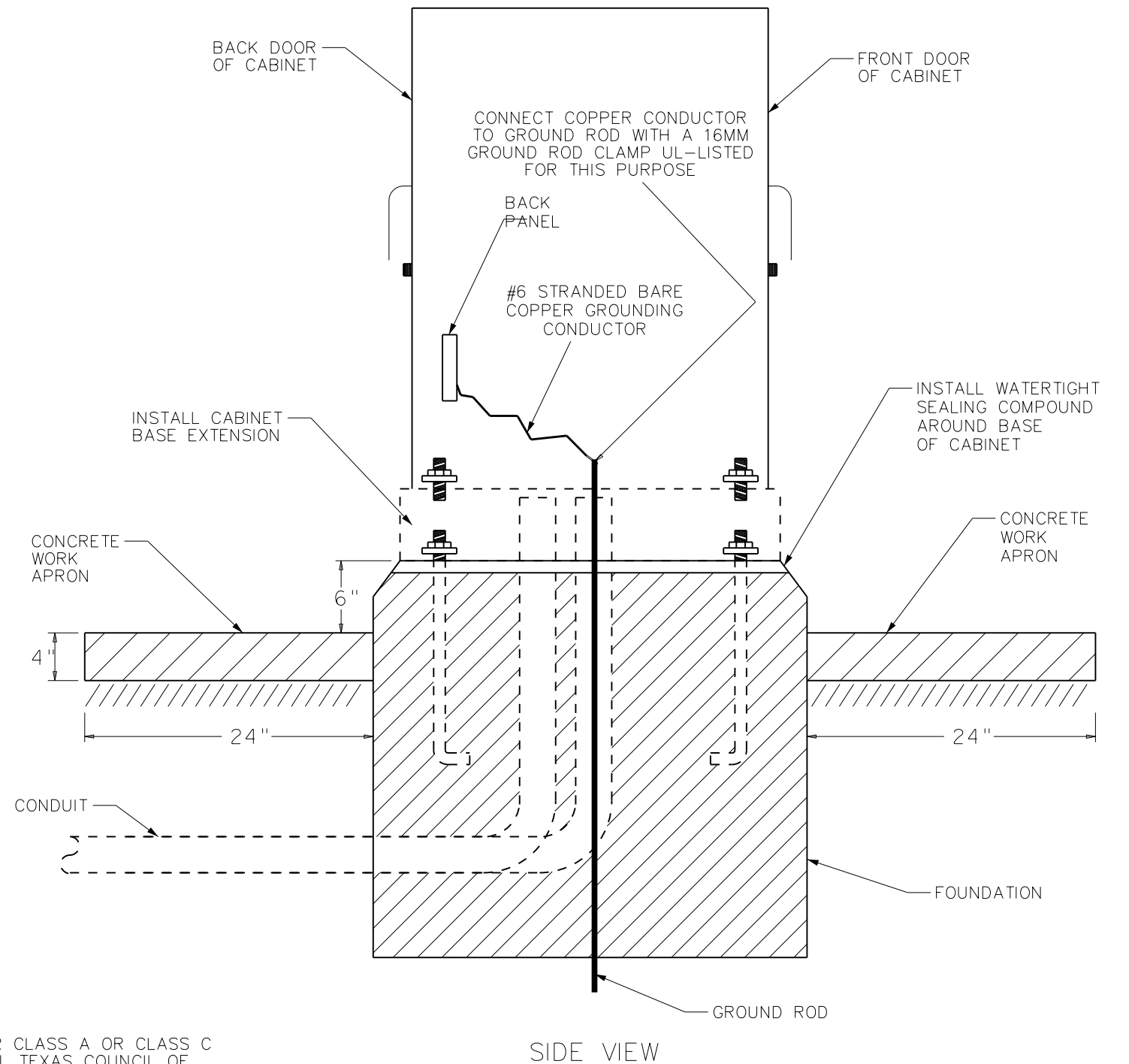
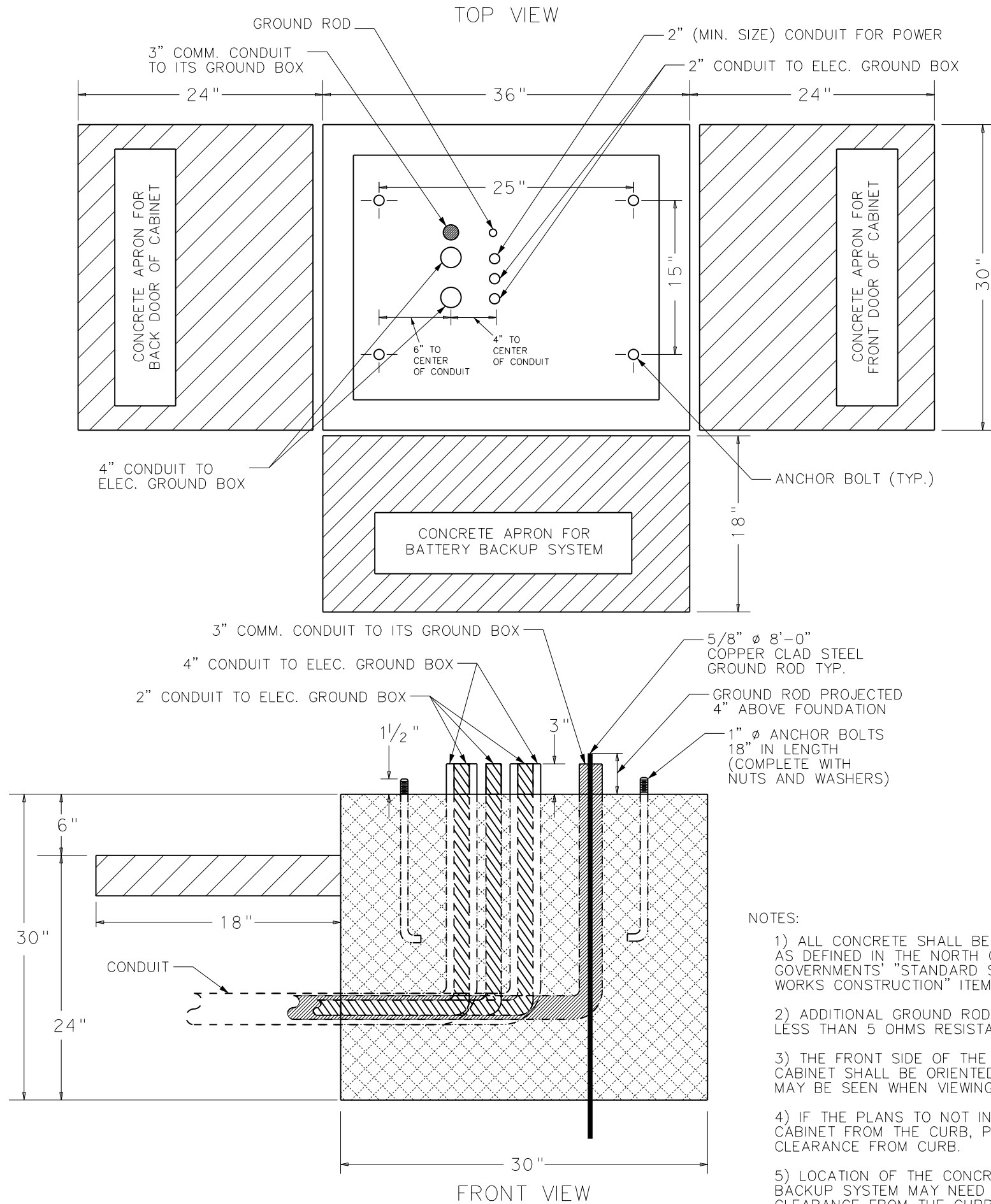



BASE MOUNTED CONTROLLER CABINET FOUNDATION DETAILS

(FOR TYPE 332, 352i CONTROLLER CABINETS)



- NOTES:
- 1) ALL CONCRETE SHALL BE EITHER CLASS A OR CLASS C AS DEFINED IN THE NORTH CENTRAL TEXAS COUNCIL OF GOVERNMENTS' "STANDARD SPECIFICATIONS FOR PUBLIC WORKS CONSTRUCTION" ITEM 7.4.5
 - 2) ADDITIONAL GROUND RODS MAY BE NEEDED TO ACHIEVE LESS THAN 5 OHMS RESISTANCE TO GROUND.
 - 3) THE FRONT SIDE OF THE TRAFFIC SIGNAL CONTROLLER CABINET SHALL BE ORIENTED SUCH THAT THE INTERSECTION MAY BE SEEN WHEN VIEWING THE CONTROLLER FRONT PANEL.
 - 4) IF THE PLANS DO NOT INDICATE SPACING OF THE CABINET FROM THE CURB, PROVIDE FOR A 48" MINIMUM CLEARANCE FROM CURB.
 - 5) LOCATION OF THE CONCRETE APRON FOR THE BATTERY BACKUP SYSTEM MAY NEED TO BE ADJUSTED BASED ON CLEARANCE FROM THE CURB AND AVAILABLE RIGHT-OF-WAY.



CITY OF DALLAS

DEPARTMENT OF TRANSPORTATION

CITY OF DALLAS

2025 TRAFFIC SIGNAL CONSTRUCTION DESIGN SPECIFICATIONS

DRAWN	DESIGN	DATE	SCALE	VERSION	SHEET NO.
ACC	SRV	2/24/2025	AS NOTED	1.5.1	1/1