



**LEGEND**

- PROPOSED CURB
- PROPOSED SIGNAL EQUIPMENT
- PROPOSED SIDEWALK
- PROPOSED MEDIAN
- PAVEMENT REMOVAL

- PROS:**
1. IMPROVEMENTS FROM EXISTING CONDITIONS USING IMPROVED DESIGN APPROACH AND LATEST SIGNAL TECHNOLOGY.
- CONS:**
1. VISIBILITY OF THE SIGNAL SIMILAR TO EXISTING CONDITIONS, BUT IMPROVED WITH SIGNAL INFRASTRUCTURE.
  2. PEDESTRIAN ACCOMMODATIONS SIMILAR TO EXISTING CONDITIONS, BUT IMPROVED WITH MAKING CROSSINGS AND THE TWO-STAGE CROSSING ON COLORADO.

NOTE: PLANNING LEVEL EXHIBIT. THE INFORMATION SHOWN IN THIS EXHIBIT IS PRELIMINARY AND SUBJECT TO CHANGE.



ALTERNATIVE 1:  
 INTERSECTION ENHANCEMENTS  
 COLORADO BLVD AT  
 TYLER ST/ SYLVAN AVE

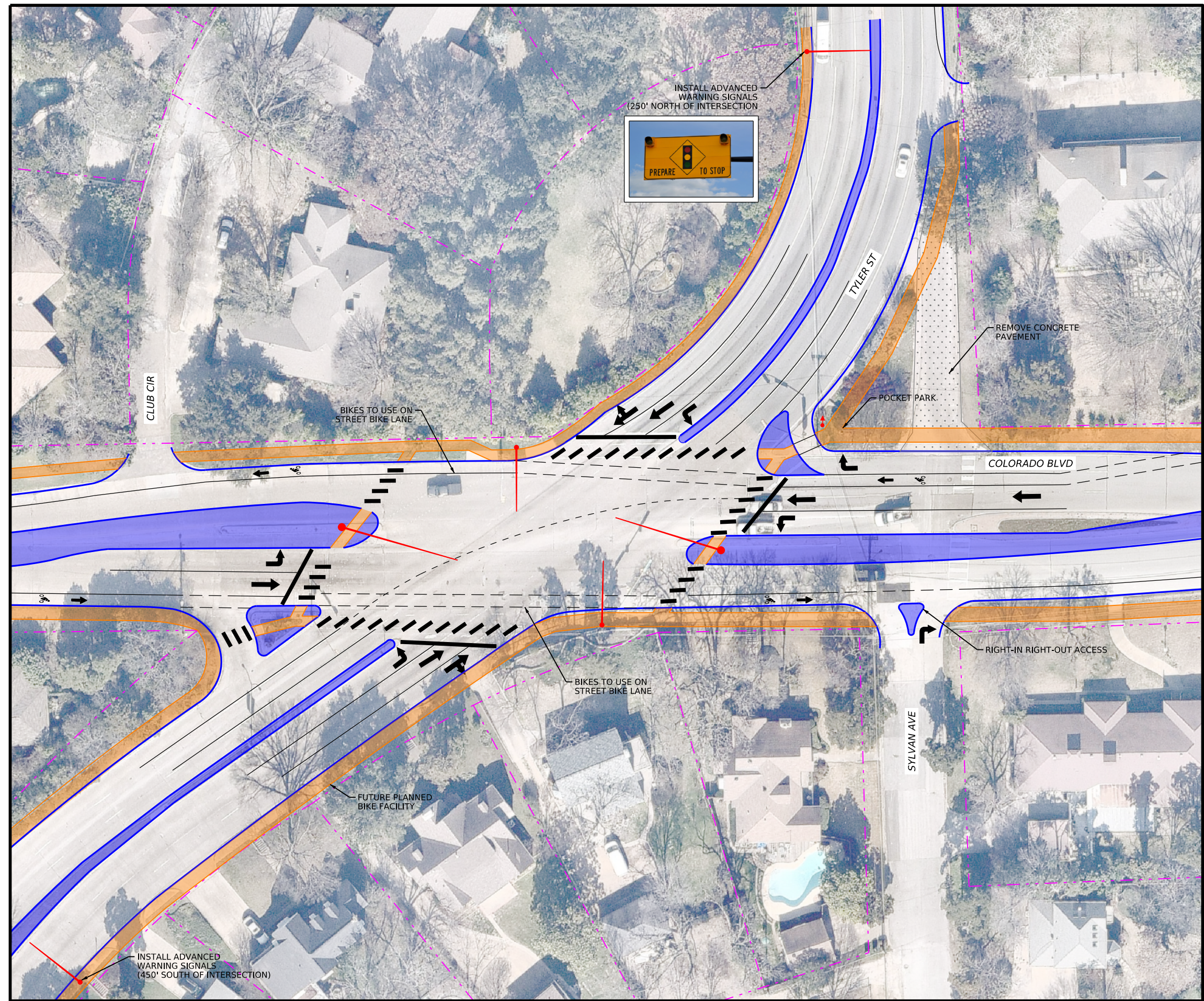
CITY OF DALLAS PM: Auro Majumdar, P.E., P.T.O.E.

KHA PROJECT NUMBER: 064036068

SCALE: AS SHOWN

DATE: FEBRUARY 2025

SHEET NO.  
**1**

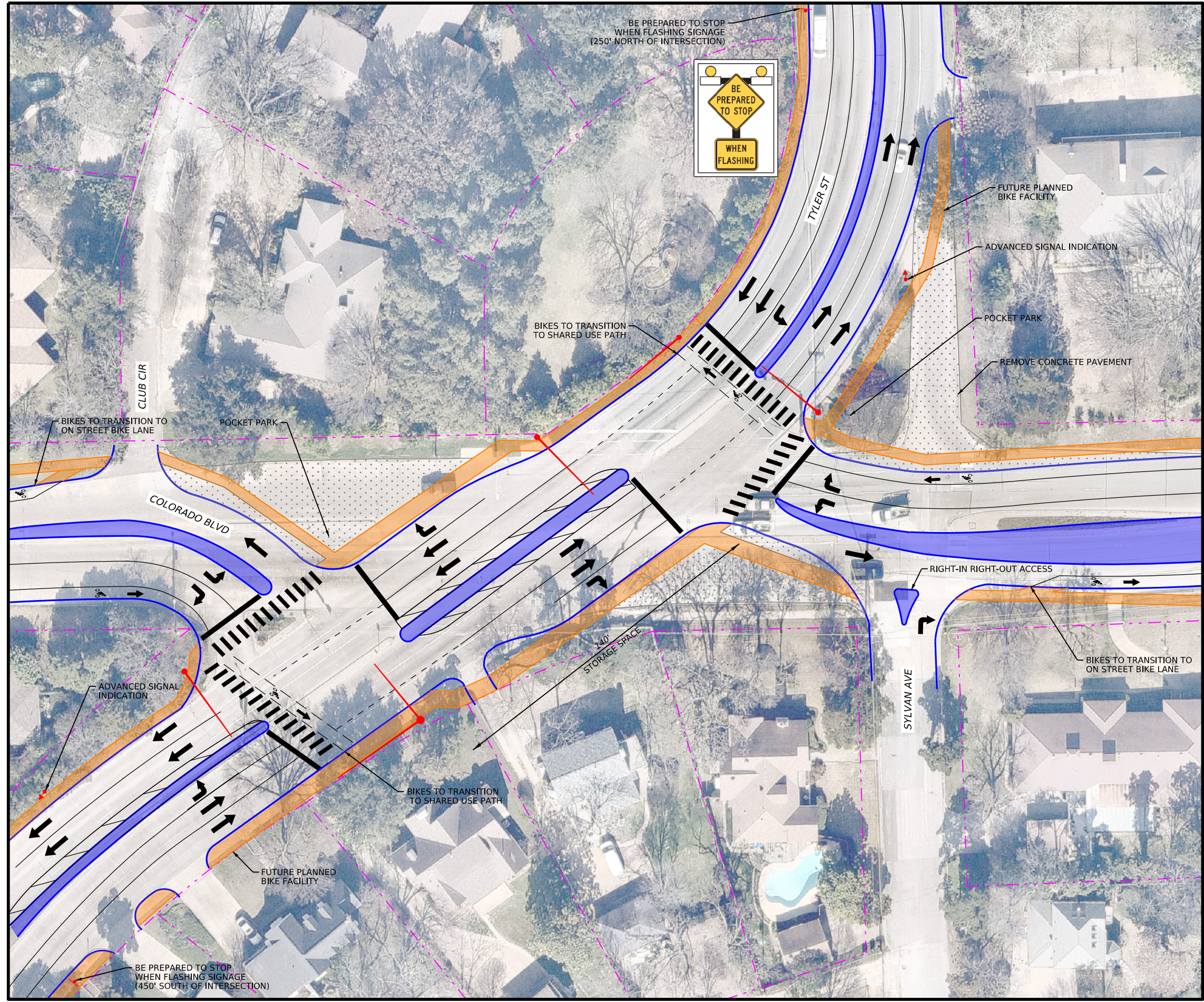


PLOTTED: 3/25/2025  
 FILENAME: c:\pwworking\1\0467614\COD\_Colorado-Tyler\_Prop Alt\_3\_Sheet.dgn  
 BY: Rachel Morfett



**LEGEND**

- PROPOSED CURB
- PROPOSED SIGNAL EQUIPMENT
- PROPOSED SIDEWALK
- PROPOSED MEDIAN
- PAVEMENT REMOVAL



- PROS:**
1. TYLER ST IS THE MAJOR VEHICULAR MOVEMENT. ALLOWS CONTINUOUS FLOW FOR THAT APPROACH. MOVES STOP BAR UP ON TYLER ST ALSO FOR BOTH APPROACHES, HELPING WITH VISIBILITY.
  2. VERY GOOD FOR PEDESTRIAN ACCOMMODATIONS, DUE TO SHORT PED CROSSING DISTANCES.
  3. SLOWS DOWN CONFLICTING TRAFFIC ON COLORADO.
  4. POTENTIAL TO RECLAIM REAL ESTATE AND USE FOR NEIGHBORHOOD POCKET PARK.

- CONS:**
1. VISIBILITY OF THE SIGNAL COULD STILL BE A CHALLENGE, ALTHOUGH BETTER THAN EXISTING CONDITIONS.
  2. A-TYPICAL INTERSECTION CONFIGURATION FOR A LOCAL ROAD.

NOTE: PLANNING LEVEL EXHIBIT. THE INFORMATION SHOWN IN THIS EXHIBIT IS PRELIMINARY AND SUBJECT TO CHANGE.



ALTERNATIVE 2:  
 OFFSET T-INTERSECTION  
 COLORADO BLVD AT  
 TYLER ST/ SYLVAN AVE

CITY OF DALLAS PM: Auro Majumdar, P.E., P.T.O.E.

KHA PROJECT NUMBER: 064036068

SCALE: AS SHOWN




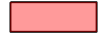


DATE: FEBRUARY 2025

SHEET NO.

2



**LEGEND**

-  PROPOSED CURB
-  PROPOSED SIDEWALK
-  PROPOSED MEDIAN
-  PROPOSED TRUCK APRON
-  PAVEMENT REMOVAL
-  ANTICIPATED ROW CORNER CLIP

- PROS:**
1. SLOWS DOWN TRAFFIC IN ALL DIRECTIONS AT INTERSECTION.
  2. ROUNDABOUT ALLOWS FOR FREE FLOW OF TRAFFIC.
  3. SHORT PEDESTRIAN CROSSING DISTANCES.

- CONS:**
1. DOES NOT ACCOMMODATE PEDESTRIANS AS WELL AS A CONVENTIONAL SIGNAL WITH PROTECTED CROSSING PHASES.
  2. WILL REQUIRE GRADING/ELEVATION CHANGES FOR BOTH NORTHBOUND/SOUTHBOUND APPROACHES DUE TO LARGE FOOTPRINT.

NOTE: PLANNING LEVEL EXHIBIT. THE INFORMATION SHOWN IN THIS EXHIBIT IS PRELIMINARY AND SUBJECT TO CHANGE.



ALTERNATIVE 3:  
 PEANUT ROUNDABOUT  
 COLORADO BLVD AT  
 TYLER ST/ SYLVAN AVE

CITY OF DALLAS PM: Auro Majumdar, P.E., P.T.O.E.

KHA PROJECT NUMBER: 064036068

SCALE: AS SHOWN

DATE: FEBRUARY 2025

SHEET NO.  
**3**

