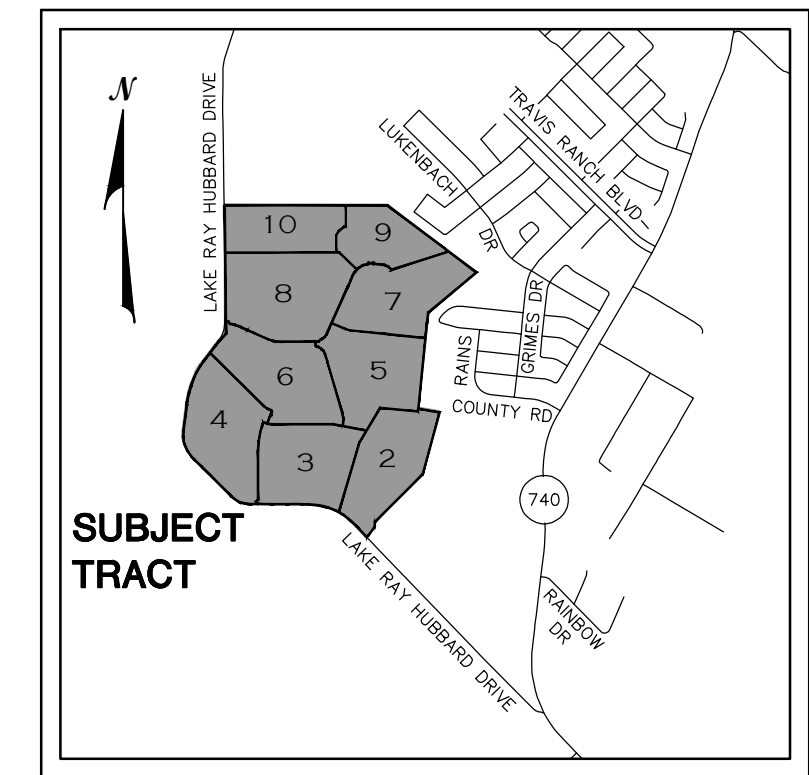


NOTES:

- 1) THE BEARING SHOWN HEREON ARE ORIENTED TO GRID NORTH, TEXAS STATE PLANE COORDINATE SYSTEM, NAD83 TEXAS NORTH CENTRAL ZONE(4202).
- 2) ALL SET EXTERIOR BOUNDARY CORNERS ARE MONUMENTED WITH A 3" ALUMINUM DISK(CITY OF DALLAS STANDARDS).
- 3) ALL INTERIOR BLOCK CORNERS ARE MONUMENTED WITH A 2" ALUMINUM DISK(CITY OF DALLAS).
- 4) ALL SET INTERIOR CORNERS AR MONUMENTED WITH A 1/2" IRON ROD WITH YELLOW CAP MARKED "WESTWOOD PS" UNLESS OTHERWISE NOTED.

GENERAL NOTES

- 1) NO LOT-TO-LOT DRAINAGE WILL BE ALLOWED WITHOUT ENGINEERING SECTION APPROVAL.



VICINITY MAP  
NOT TO SCALE

LEGEND

CIRF	IRON ROD FOUND
CIRS	SET IRON ROD W/CAP STAMPED "WESTWOOD PS"
◄	STREET NAME CHANGE
R.O.W.	RIGHT-OF-WAY
U.E.	UTILITY EASEMENT
D.E.	DRAINAGE EASEMENT
D.R.K.C.T.	DEED RECORDS, KAUFMAN COUNTY, TEXAS
P.R.K.C.T.	PLAT RECORDS KAUFMAN COUNTY, TEXAS

CITY FILE # S156-059  
 "PRELIMINARY PLAT, THIS DOCUMENT SHALL NOT BE RECORDED FOR ANY PURPOSES"  
 OF  
**CLEMENTS RANCH**  
 950 RESIDENTIAL -14 OPEN SPACE/HOA LOTS  
 257.546 ACRES  
 OUT OF THE  
 JOHN R. CONNER SURVEY, ABSTRACT No. 100,  
 WILLIAM R. CONNER SURVEY, ABSTRACT No. 92,  
 SOLOMON WOODS SURVEY, ABSTRACT No. 574  
 J.R. BRISCOE SURVEY, ABSTRACT No. 40  
 IN THE  
 CITY OF DALLAS, E.T.J., KAUFMAN COUNTY, TEXAS

OWNER  
**CLEMENTS RANCH, LLC.**  
 5956 SHERRY LANE, SUITE 1000  
 DALLAS, TEXAS 75225 (214) 546-5400

**Westwood**

Phone (214) 473-4640 2740 North Dallas Parkway, Suite 280  
 Toll Free (888) 937-6150 Plano, TX 75093  
 westwoodps.com

Westwood Professional Services, Inc.  
 Survey Firm Number: 10074301

CLEMENTS RANCH