



**LEGEND**

CIRF	IRON ROD FOUND
CIRS	SET IRON ROD W/CAP STAMPED "WESTWOOD PS"
—	STREET NAME CHANGE
R.O.W.	RIGHT-OF-WAY
U.E.	UTILITY EASEMENT
D.E.	DRAINAGE EASEMENT
D.R.K.C.T.	DEED RECORDS, KAUFMAN COUNTY, TEXAS
P.R.K.C.T.	PLAT RECORDS KAUFMAN COUNTY, TEXAS

**NOTES:**

- 1) THE BEARING SHOWN HEREON ARE ORIENTED TO GRID NORTH, TEXAS STATE PLANE COORDINATE SYSTEM, NAD83 TEXAS NORTH CENTRAL ZONE(4202).
- 2) ALL SET EXTERIOR BOUNDARY CORNERS ARE MONUMENTED WITH A 3" ALUMINUM DISK(CITY OF DALLAS STANDARDS).
- 3) ALL INTERIOR BLOCK CORNERS ARE MONUMENTED WITH A 2" ALUMINUM DISK(CITY OF DALLAS).
- 4) ALL SET INTERIOR CORNERS ARE MONUMENTED WITH A 1/2" IRON ROD WITH YELLOW CAP MARKED "WESTWOOD PS" UNLESS OTHERWISE NOTED.

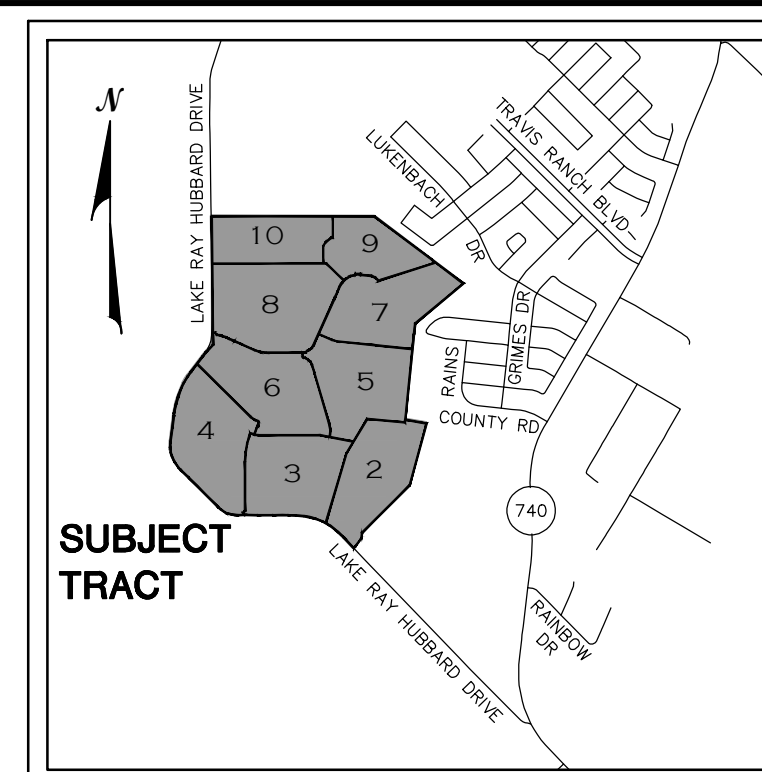
**GENERAL NOTES**

- 1) NO LOT-TO-LOT DRAINAGE WILL BE ALLOWED WITHOUT ENGINEERING SECTION APPROVAL.

# SHEET 9

# SHEET 8

# SHEET 5



VICINITY MAP NOT TO SCALE

FORNEY INDEPENDENT SCHOOL DISTRICT  
Volume 2778, PG. 396  
P.R.K.C.T.

FORNEY INDEPENDENT SCHOOL DISTRICT  
Volume 2778, PG. 396  
P.R.K.C.T.

TRAVIS RANCH PHASE 2B  
CABINET 2, PG. 749  
P.R.K.C.T.

REM. 92.332 AC.  
CTMGT TRAVIS RANCH, LLC  
FUTURE TRAVIS RANCH  
2008-00015702  
R.P.R.K.C.T.

CITY FILE # S156-059

"PRELIMINARY PLAT. THIS DOCUMENT SHALL NOT BE RECORDED FOR ANY PURPOSES"

OF

## CLEMENTS RANCH

950 RESIDENTIAL -14 OPEN SPACE/HOA LOTS  
257.546 ACRES  
OUT OF THE  
JOHN R. CONNER SURVEY, ABSTRACT No. 100,  
WILLIAM R. CONNER SURVEY, ABSTRACT No. 92,  
SOLOMON WOODS SURVEY, ABSTRACT No. 574  
J.R. BRISCOE SURVEY, ABSTRACT No. 40  
IN THE  
CITY OF DALLAS, E.T.J., KAUFMAN COUNTY, TEXAS

OWNER  
CLEMENTS RANCH, LLC.  
5956 SHERRY LANE, SUITE 1000  
DALLAS, TEXAS 75225 (214) 546-5400

**Westwood**

Phone (214) 473-4640 2740 North Dallas Parkway, Suite 280  
TollFree (888) 937-6150 Plano, TX 75093  
westwoods.com

Westwood Professional Services, Inc.  
Survey Firm Number: 10074301

