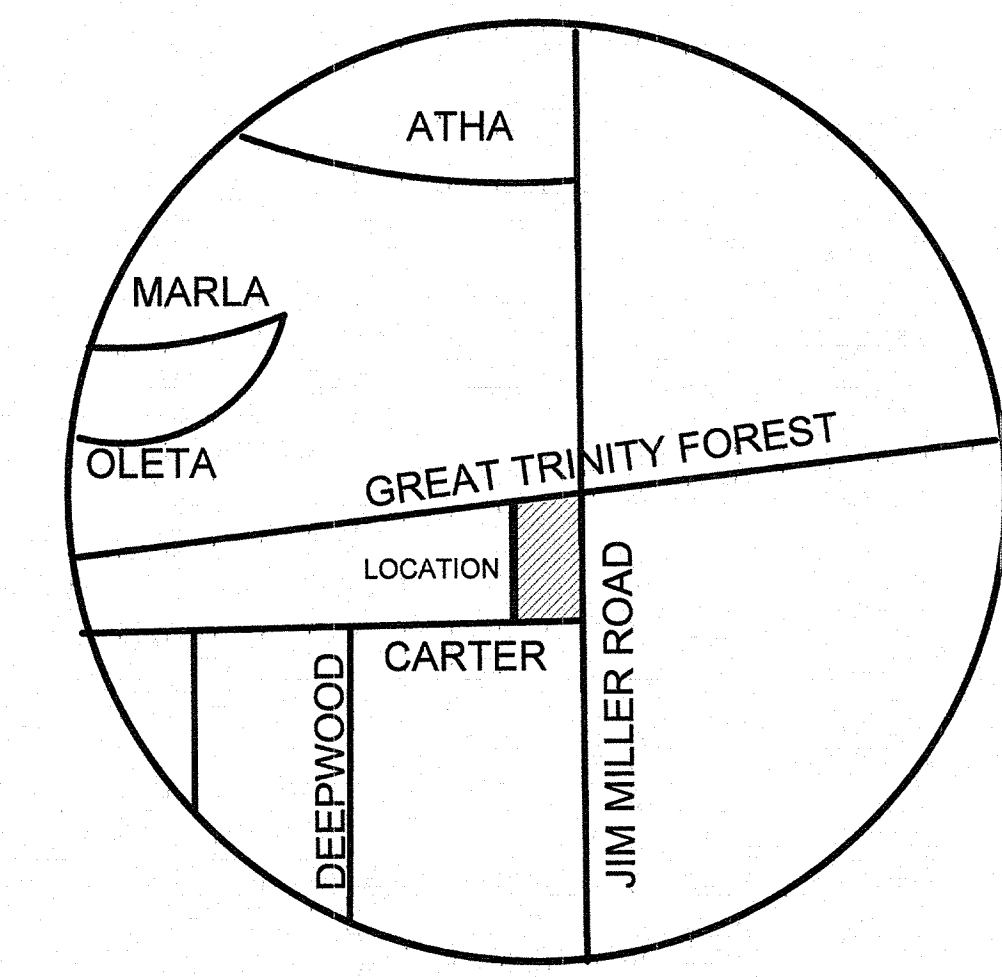
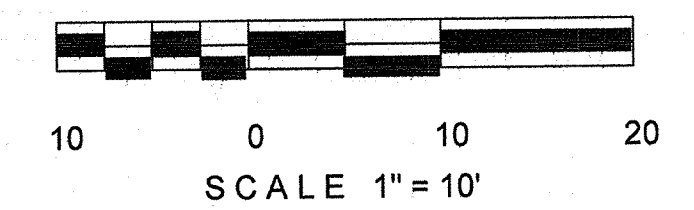


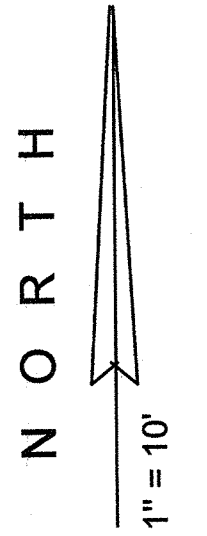
GREAT TRINITY FOREST



VICINITY MAP



CENSUS TRACT	0093.04
COUNCIL DIST.	8
ZONING	CR- DRY
ISD	DALLAS
MAPSCO	58-W

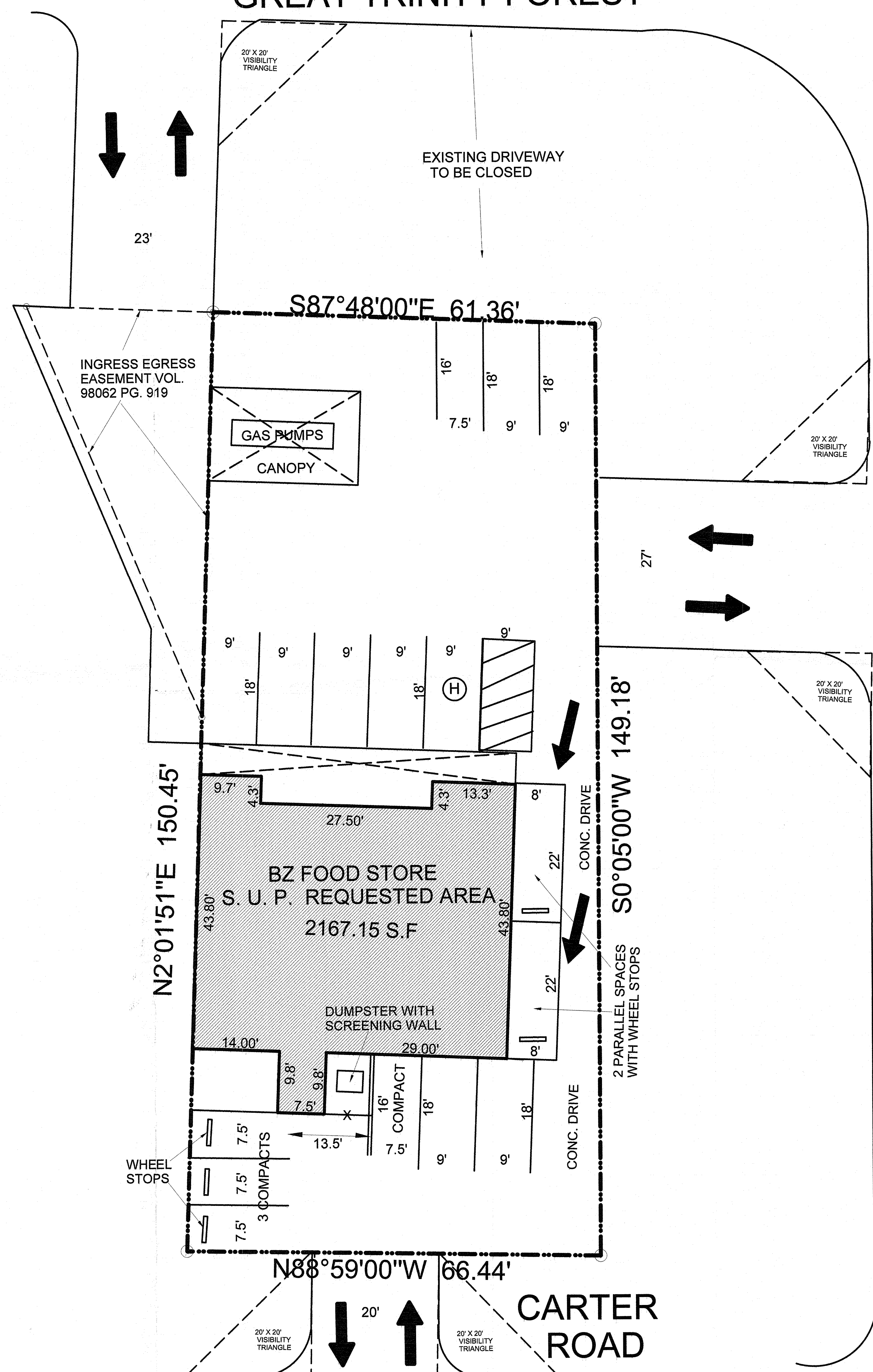


LEGEND

- 1/2" IRF = 1/2" IRON ROD FOUND
- 1/2" IRS = 1/2" IRON ROD SET
- X' FND = 'X' CUT IN CONCRETE FOUND
- HMF = HIGHWAY MONUMENT FOUND
- RRSF = RAILROAD SPIKE FOUND
- P O B = POINT OF BEGINNING
- P O C = POINT OF COMMENCING
- ESMT = EASEMENT
- UGE = UNDERGROUND ELECTRIC SERVICE
- OHE = OVERHEAD ELECTRIC SERVICE
- ET = ELECTRIC TRANSFORMER
- FH = FIRE HYDRANT
- WV = WATER VALVE
- WM = WATER METER
- PP = POWER POLE
- PPIG = POWER POLE & GUY ANCHOR
- LP = LIGHT POLE
- SP = SIGN POLE
- SSMH = SANITARY SEWER MANHOLE
- SSCO = SANITARY SEWER CLEANOUT
- SDMH = STORM DRAIN MANHOLE
- ELMH = ELECTRICAL MANHOLE
- PS = PARKING SPACE
- Hh = HANDICAPPED PARKING SPACE
- TB = TRAFFIC BOX
- TL = TRAFFIC LIGHT
- TMH = TELEPHONE MANHOLE
- CW = CONCRETE WALK
- TR = TELEPHONE RISER
- GM = GAS METER
- CB = CABLE BOX
- X--- = FENCE

IMPERVIOUS AREA	
BUILDING FOOTPRINT	2167.15 S.F.
CONCRETE FLATWORK	7403.85 S.F.
TOTAL	9571.00 S.F.

PARKING AND ZONING TABULATIONS		
PARKING	REQUIRED	PROVIDED
REGULAR PARKING SPACES	12	15
HANDICAPPED SPACES	1	1
TOTAL	13	16



BEING PART OF LOT 1 IN BLOCK 6262 OF LOOP 12 STORE NO. 1 ADDITION IN THE CITY OF DALLAS, TEXAS, ACCORDING TO THE PLAT THEREOF RECORDED IN VOLUME 72015, PAGE 2212 OF THE DEED RECORDS OF DALLAS COUNTY, TEXAS AND BEING MORE PARTICULARLY DESCRIBED AS FOLLOWS:

BEGINNING AT THE NORTHEAST CORNER OF SAID LOT 1 AT THE INTERSECTION OF THE SOUTH LINE OF GREAT TRINITY FOREST WITH THE WEST LINE OF JIM MILLER ROAD;

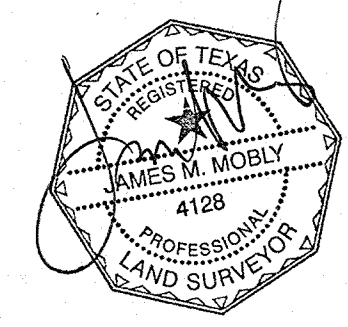
THENCE SOUTH 00 DEGREES 05 MINUTES WEST, ALONG THE WEST LINE OF JIM MILLER ROAD A DISTANCE OF 149.18 FEET TO ITS INTERSECTION WITH THE NORTH LINE OF CARTER ROAD, THE SOUTHEAST CORNER OF SAID LOT 1;

THENCE NORTH 88 DEGREES 59 MINUTES WEST, ALONG THE NORTH LINE OF CARTER ROAD, A DISTANCE OF 66.44 FEET TO A POINT FOR CORNER BEING 37.26 FEET SOUTH 88 DEGREES 59 MINUTES EAST FROM THE SOUTHWEST CORNER OF SAID LOT 1;

THENCE NORTH 02 DEGREES 02 MINUTES EAST, A DISTANCE OF 150.45 FEET TO A POINT FOR CORNER ON THE SOUTH LINE OF GREAT TRINITY FOREST, BEING 40.07 FEET SOUTH 87 DEGREES 48 MINUTES EAST FROM THE NORTHWEST CORNER OF SAID LOT 1;

THENCE SOUTH 87 DEGREES 48 MINUTES EAST ALONG THE SOUTH LINE OF GREAT TRINITY FOREST A DISTANCE OF 61.36 FEET TO THE PLACE OF BEGINNING AND CONTAINING 9571 SQUARE FEET OR 0.22 ACRES OF LAND.

SITE PLAN
BZ FOOD STORE
7036 GREAT TRINITY FOREST



BUSINESS ZOOM
 1901 CENTRAL DRIVE SUITE 605
 BEDFORD, TEXAS 76021 972-591-3322
 REPRESENTATIVE: PARVEZ MALIK B.S.B.A.
 TEXAS REAL ESTATE LICENSED

SCALE	1"=10'
DATE	11-22-2013
FILE NUMBER	

ZONING CASE #