



Dallas Park & Recreation

## **Sustainable Turf and Prairie Management Program**



**Park and Recreation Board  
May 4, 2017**

# Presentation Overview

- Turf Management Program
- Organics Pilot Program
- Pollinator Conservation Practices
- Prairie Management

# Turf Management Program

- Program Target Areas
  - Athletic Fields
  - Recreation Centers
  - High Visibility/Traffic Areas
- Implements and adheres to Integrated Pest Management (IPM) principles for turf management in parks



# Turf Management Program

	JAN	FEB	MAR	APR	MAY	JUN	JUL	AUG	SEP	OCT	NOV	DEC
<b>Pre-Emergent</b>		Week 3&4	Week 1&2						Week 3&4	Week 1&2	Week 3&4	Week 1&2
<b>Bermuda Release</b>	Jan and Feb											Dec
<b>Post Emergent</b>	Year Round According to Established Thresholds for Weed Pressure											
<b>Fertilizer</b>				April and May					Sept and Oct			
<b>Grub Gontrol</b>			Optional Grub Control									
<b>Nutsedge Control</b>			As Needed According to Established Thresholds for Weed Pressure									
<b>Grassy Weeds</b>			As Needed According to Established Thresholds for Weed Pressure									
<b>Fungicide</b>	Year-round According to Pest Presence											
<b>Aeration</b>			All Month						All Month			
<b>Fire Ant</b>	Year-round According to Pest Presence (although unlikely to be visibly active in winter months)											

## PROGRAM STRUCTURE:

Program Schedule

Operation Standards and Thresholds

Approved Program Sites and Associated Acreage

# Turf Management Program

- Program benefits
  - Maintains safe and aesthetically pleasing parks
  - Maintains quality sports fields
  - Creates recreation and social opportunities on managed turf
  - Controls erosion
  - Reduces heat island effect
  - Improves the filtration of contaminants
  - Reduces mowing cycles once program is fully implemented (esp. late winter/early spring)
  - Reduces pesticide usage over time



# Organic Pilot Program

- Program Evaluation Period: 3 years
- Celebration of Life Park
  - Small Downtown Park (0.75 acre)
  - Ornamental Beds
  - Ornamental Trees
  - St. Augustine and Bermuda Turf Mix
  - Moderate Foot Traffic/Usage
  - Irrigated Site



# Organic Pilot Objectives

- Minimize or eliminate use of synthetic chemical pesticides
- Minimize or eliminate use of synthetic fertilizer products
- Use aeration and mow at optimal heights
- Use plant species that are less susceptible to pests and diseases which are well-adapted to the environmental conditions of this region



# Organic Pilot: Data Tracking and Analytics

- Research less expensive organic products that are comparable to synthetics
- Photo-documentation for the span of the pilot program
- Utilize a tracking sheet with inventory of products that have been used and will continue to be used in the short term and note why they are used.
- Use a cost-capturing database for budgetary comparisons of organic vs synthetics
- Map out progression of IPM to interpret data derived for presentation and decision making





# Pollinator Conservation

- Major focus of conservation efforts
- Mayor's Monarch Pledge
- Create "patch" corridors through White Rock Creek east of Downtown, and down the Trinity and along the escarpment west of Downtown
- Achieved through pollinator gardens, wildflower areas, prairie restoration efforts



# Pollinator Gardens

- Staff/city and volunteer/community-driven gardens
  - Goal for 1 garden in each maintenance district
- Minimum standard – certifiable as Monarch Waystations
- Texas Discovery Garden – partner and NFWF Grant
- 11 installed, 10 more planned
  - R.P. Brooks Park
  - Everglade Park
  - Crawford Park
  - Tenison Park



**Crawford Memorial Park**

# Wildflower Areas

- 107 areas, 78.5 acres
  - Prep begins in February
  - Blooming by end of March
  - Try to maintain until flowers go to seed
- Looking to increase fall blooming plants



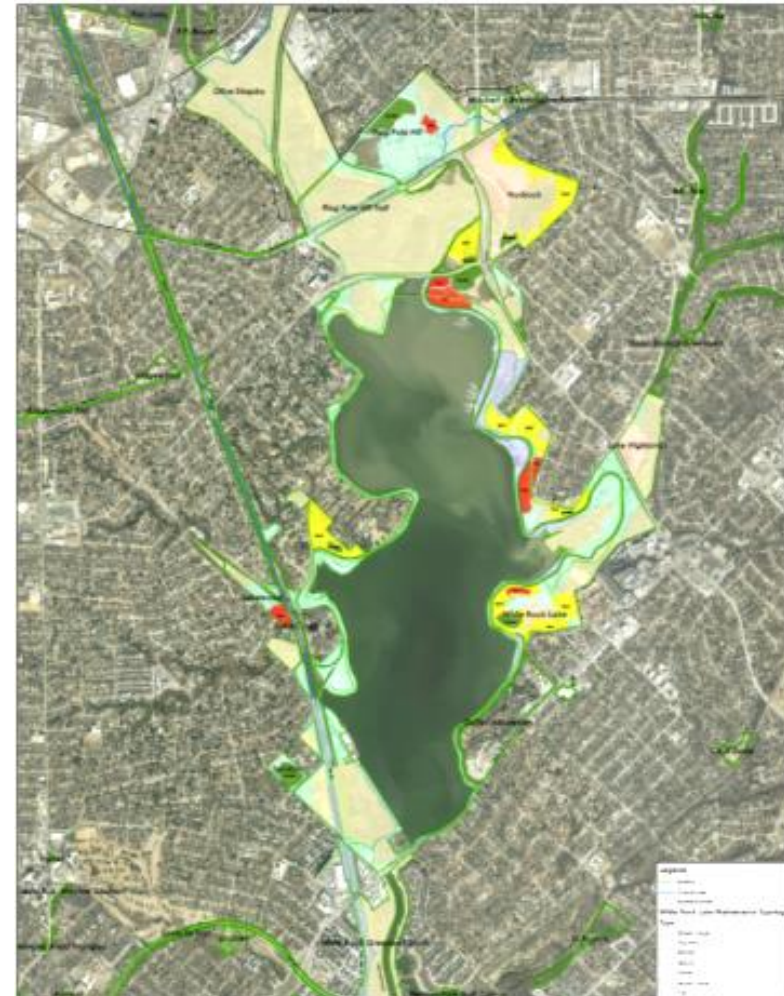
# Prairie Restoration

- “Blackland Prairie” – endangered ecosystem
- Critical to pollinator “patch” corridor
- Current work
  - White Rock Lake Park – 162.3 acres
  - Harry S. Moss Park – 23 acres
- Future work
  - Crawford Memorial Park – 21 acres



# Prairie Assessment Team

- Four non-city prairie and plant community experts
- May 11, 2016 – formal assessment of White Rock Lake remnants
- 14/16 remnants were considered “prairie” – rated on condition – 162.3 acres
- “Globally rare” plant community found at Flag Pole Hill Park



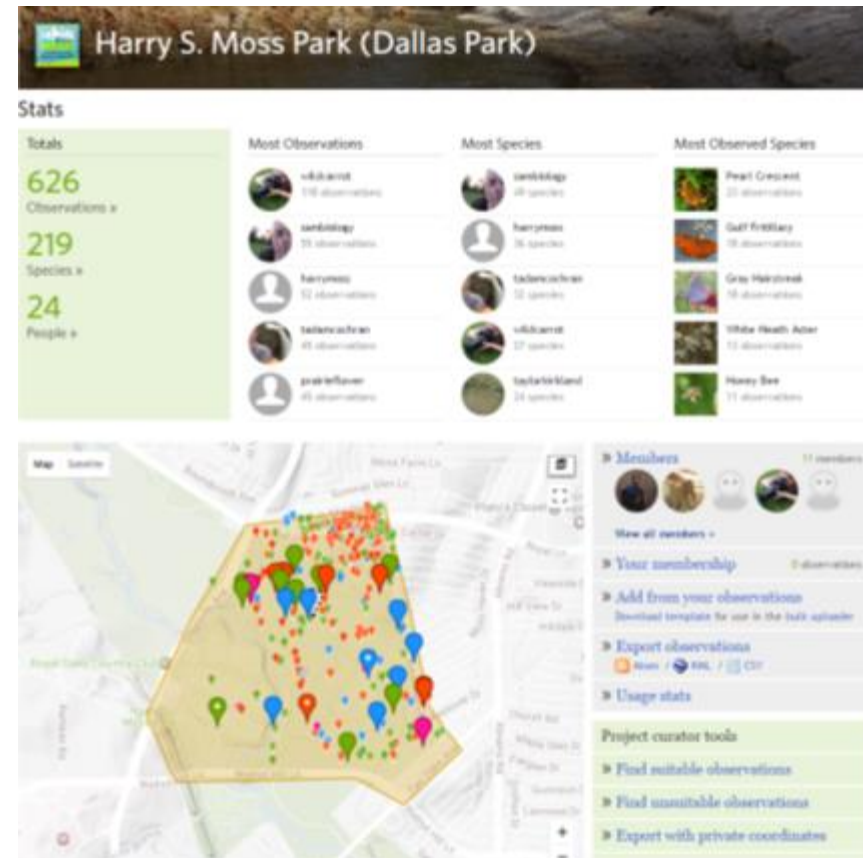
# Current Prairie Management

- White Rock Lake Park
  - Started rotational mowing
  - Volunteer, manual invasive species removal
  - Outreach efforts
    - Native Plants and Prairie Day, BioBlitz
- Harry S. Moss Park
  - Beautification Agreement
  - Assistance from TDG with NFWF grant money



# Future Prairie Management

- Adopt-A-Prairie
  - Survey for “Top 10 Plants”
  - Manual removal of invasive species
  - Seed collection and dispersal
  - Four areas already adopted
- Crawford Memorial Park
  - Define area
  - Develop a partnership





Dallas Park & Recreation

# Sustainable Turf and Prairie Management Program



**Park and Recreation Board**  
**May 4, 2017**