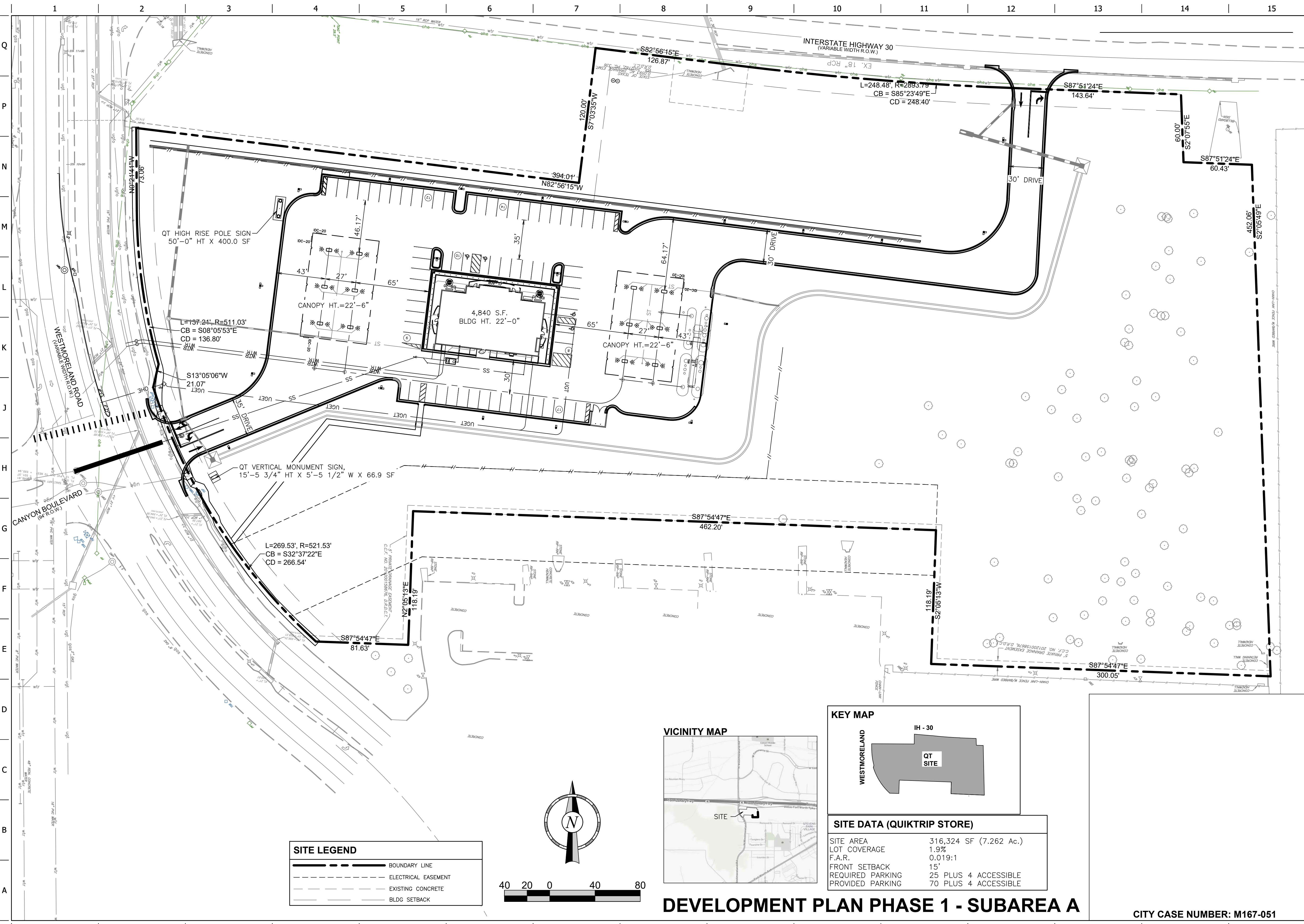
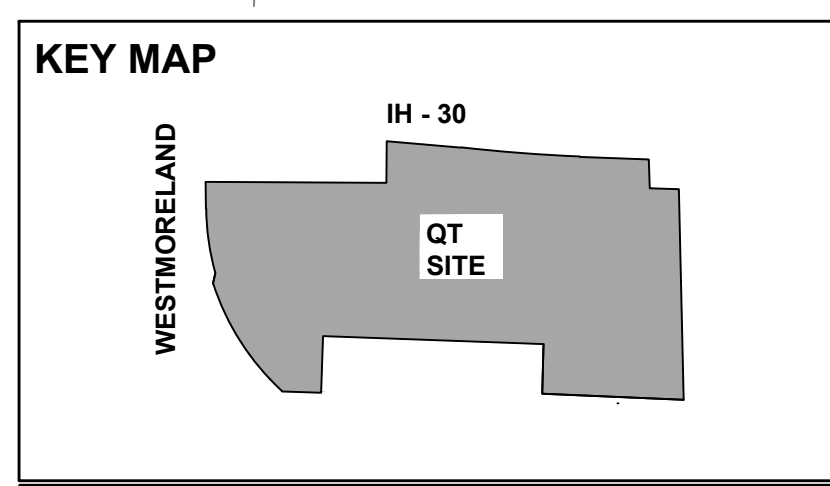
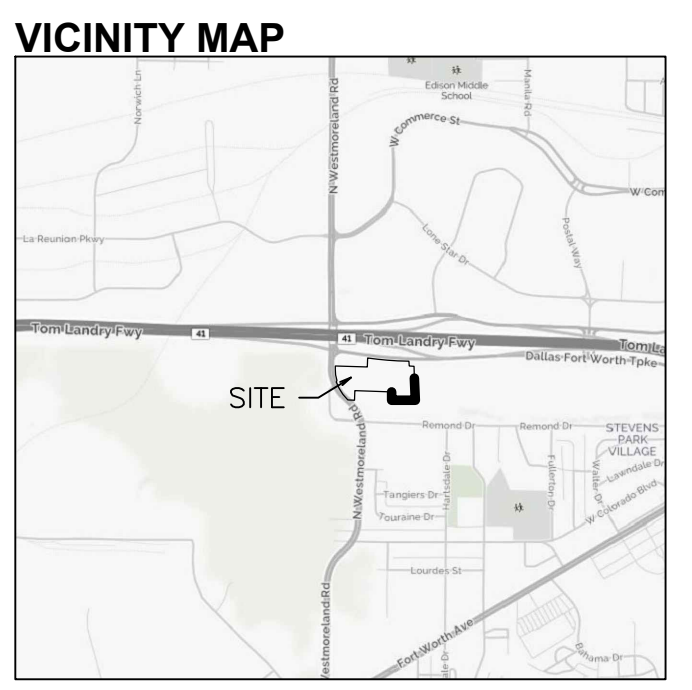
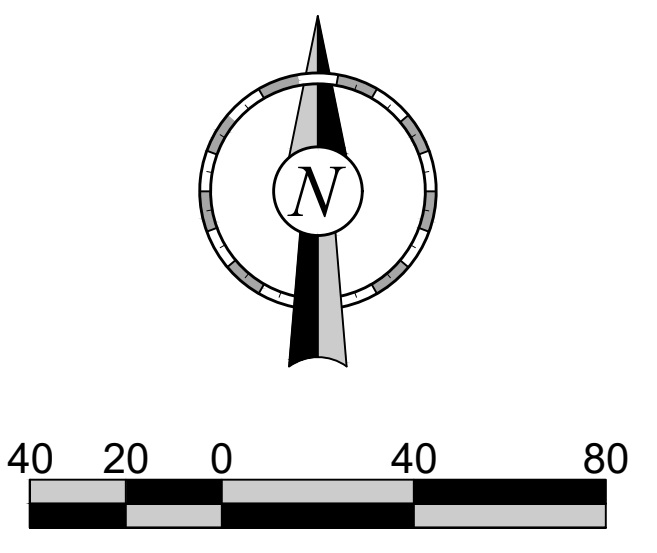


FILE LOCATION: \\jess\0116002\_097\Drawings\01\2018\Civil - Small Store - Freim\08-097\civil.dwg TAB NAME: DEV. PLAN USER: romello SAVED: 7/28/2020 3:12 PM PLOTTED: 12/7/2020 4:15 PM



**SITE LEGEND**

	BOUNDARY LINE
	ELECTRICAL EASEMENT
	EXISTING CONCRETE
	BLDG SETBACK



**SITE DATA (QUICKTRIP STORE)**

SITE AREA	316,324 SF (7.262 Ac.)
LOT COVERAGE	1.9%
F.A.R.	0.019:1
FRONT SETBACK	15'
REQUIRED PARKING	25 PLUS 4 ACCESSIBLE
PROVIDED PARKING	70 PLUS 4 ACCESSIBLE

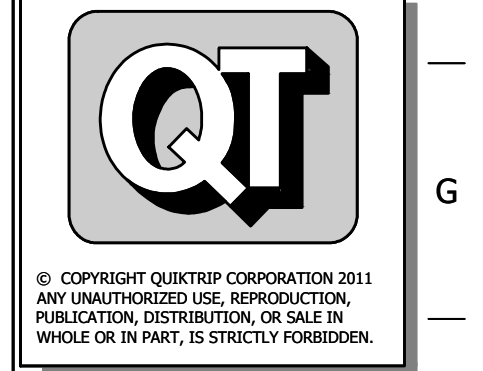
**DEVELOPMENT PLAN PHASE 1 - SUBAREA A**

CITY CASE NUMBER: M167-051

PRELIMINARY FOR REVIEW ONLY  
 THESE DOCUMENTS ARE FOR DESIGN REVIEW ONLY AND NOT INTENDED FOR THE PURPOSES OF CONSTRUCTION, BIDDING OR PERMIT. THEY WERE PREPARED BY, OR UNDER THE SUPERVISION OF:  
 JONATHAN E. SCHINDLER  
 P.E.# 108864  
 DATE: 9/27/2017  
 PROJECT NO.: QT16002\_0977



**QuikTrip No. 977**  
 I-30 & WEST MORELAND ROAD  
 DALLAS, TEXAS



© COPYRIGHT QUICKTRIP CORPORATION 2011  
 ANY UNAUTHORIZED USE, REPRODUCTION, PUBLICATION, DISTRIBUTION, OR SALE IN WHOLE OR IN PART, IS STRICTLY FORBIDDEN.

PROTOTYPE: P-92 (08/01/17)  
 DIVISION:  
 VERSION: 001  
 DESIGNED BY:  
 DRAWN BY:  
 REVIEWED BY:

REV	DATE	DESCRIPTION	ORIGINAL ISSUE DATE:

SHEET TITLE:  
 PRELIMINARY SITE PLAN

SHEET NUMBER:  
**3**