



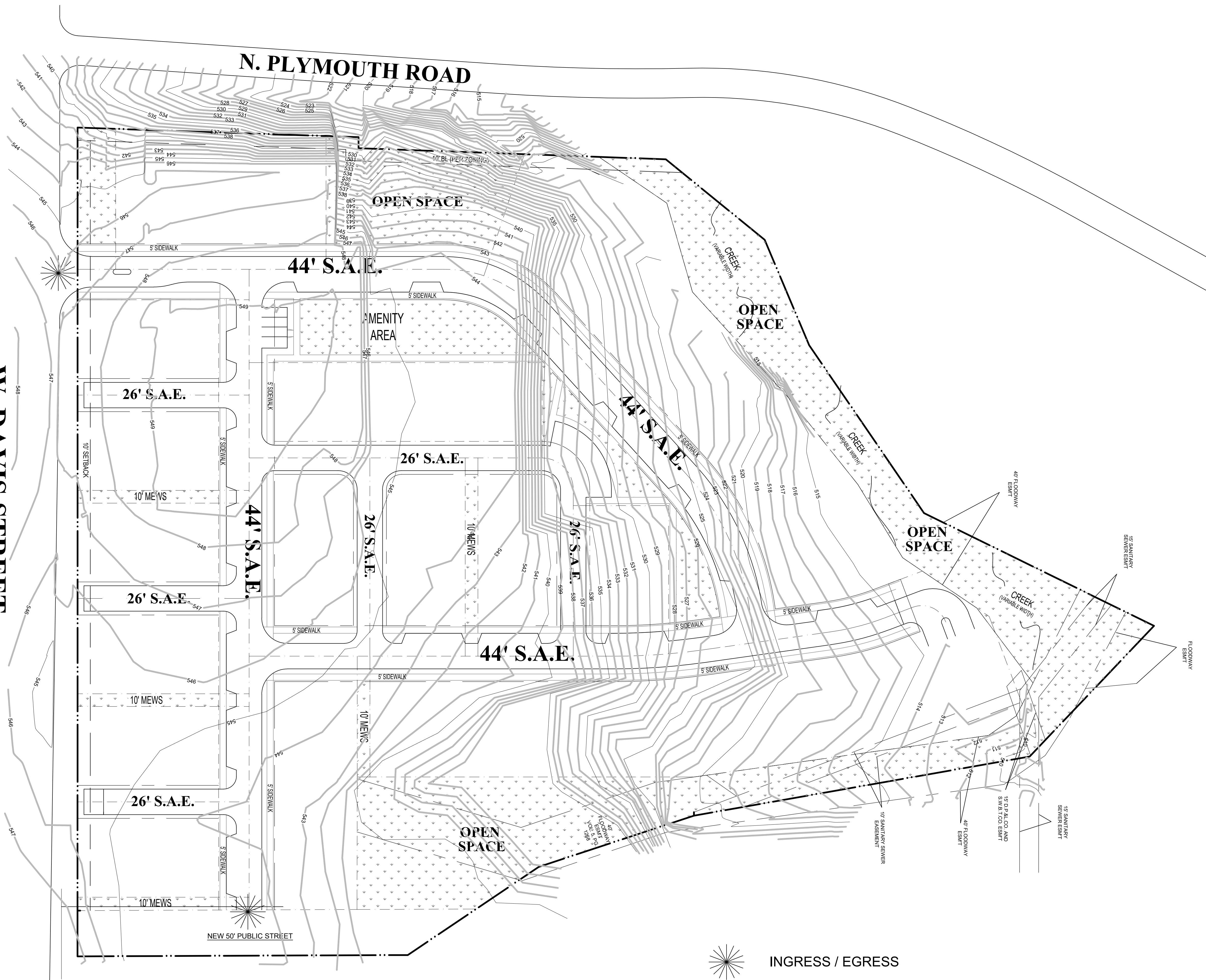
1

CONCEPTUAL PLAN

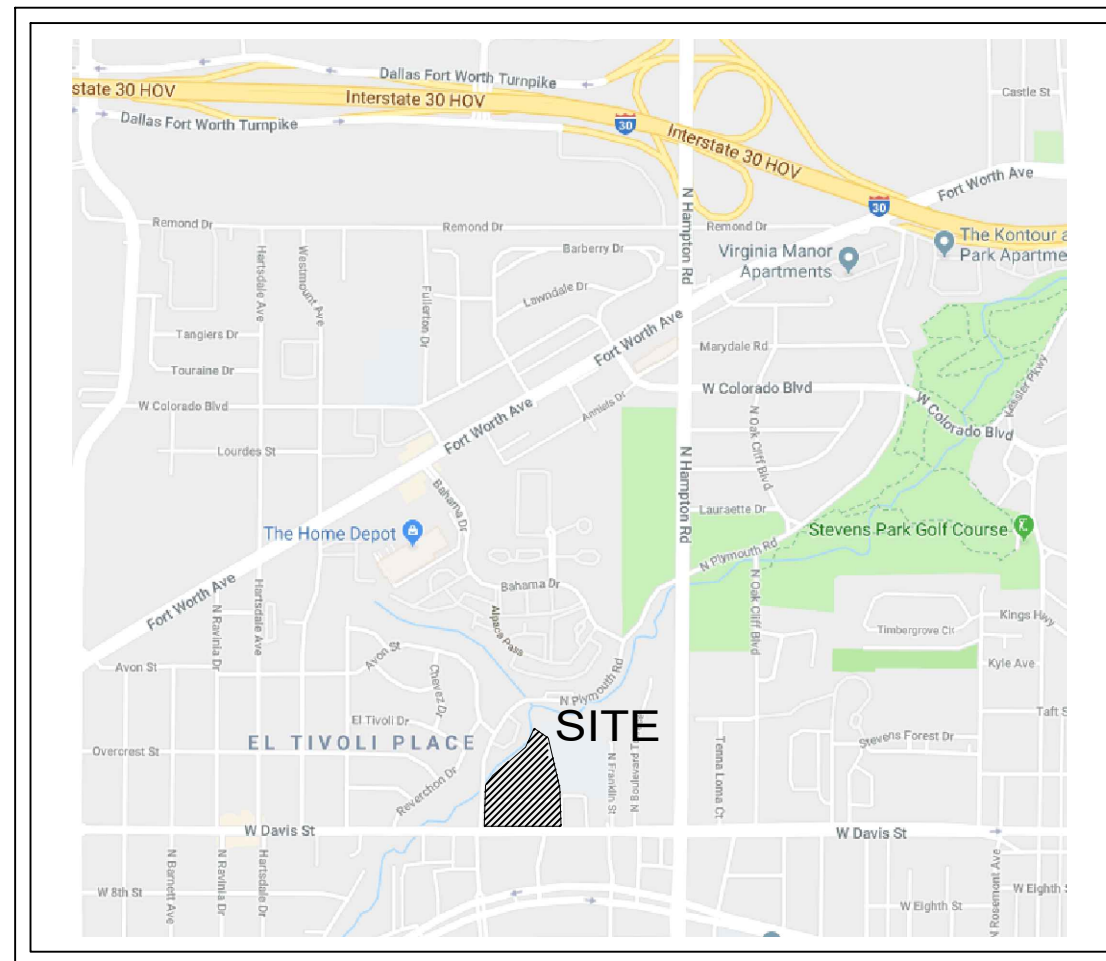
SCALE: 1:60

W. DAVIS STREET

N. PLYMOUTH ROAD

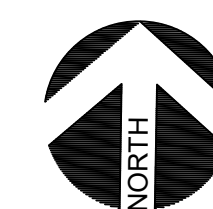


INGRESS / EGRESS



VICINITY MAP

NTS



TOTAL SITE AREA	8.08 ACRES
LAND USE	SINGLE FAMILY
TOTAL DENSITY	85 UNITS
MAX. BUILDING HEIGHT	36 FT
MAX. LOT COVERAGE	60%
MINIMUM SETBACKS	
FRONT SETBACK	10 FT
SIDE SETBACK	NONE
REAR SETBACK	NONE
PARKING	
	REQ.
PARKING	2 / UNIT
GUEST PARKING	0.25 / UNIT

12/13/2018
PROJECT NUMBER

CASE NUMBER

BALDWIN ASSOCIATES
 3904 Elm Street, Suite B
 Dallas, Texas 75226
 MOBILE: 214.729.7949
 OFFICE: 214.824.7949
 rob@baldwinplanning.com



WEST DAVIS & PLYMOUTH
 DALLAS, TX