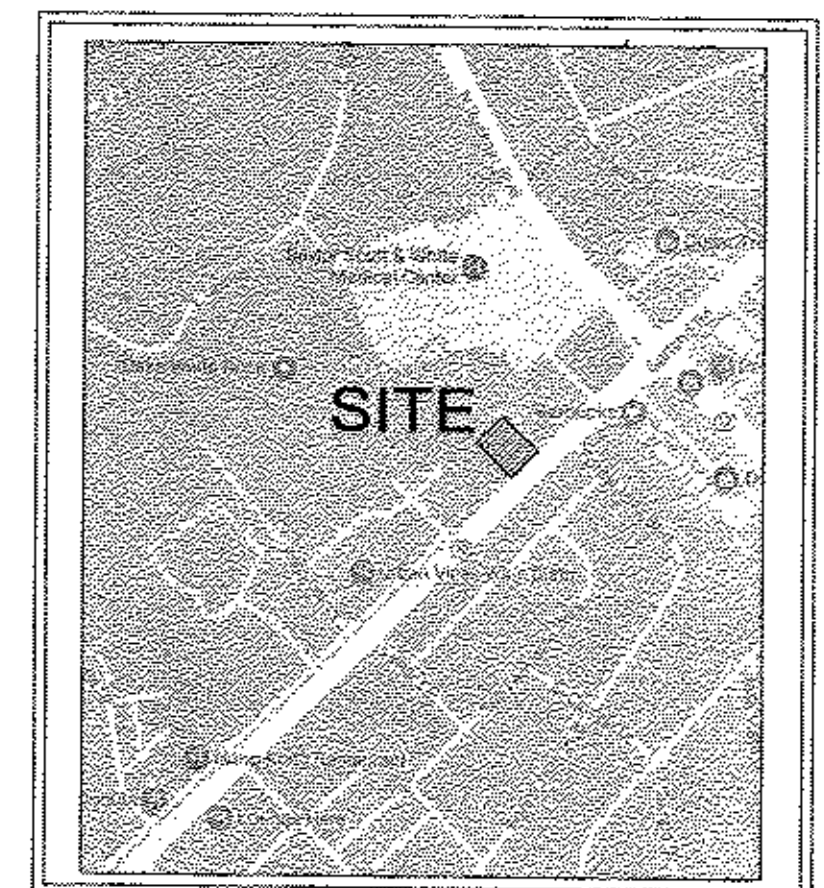
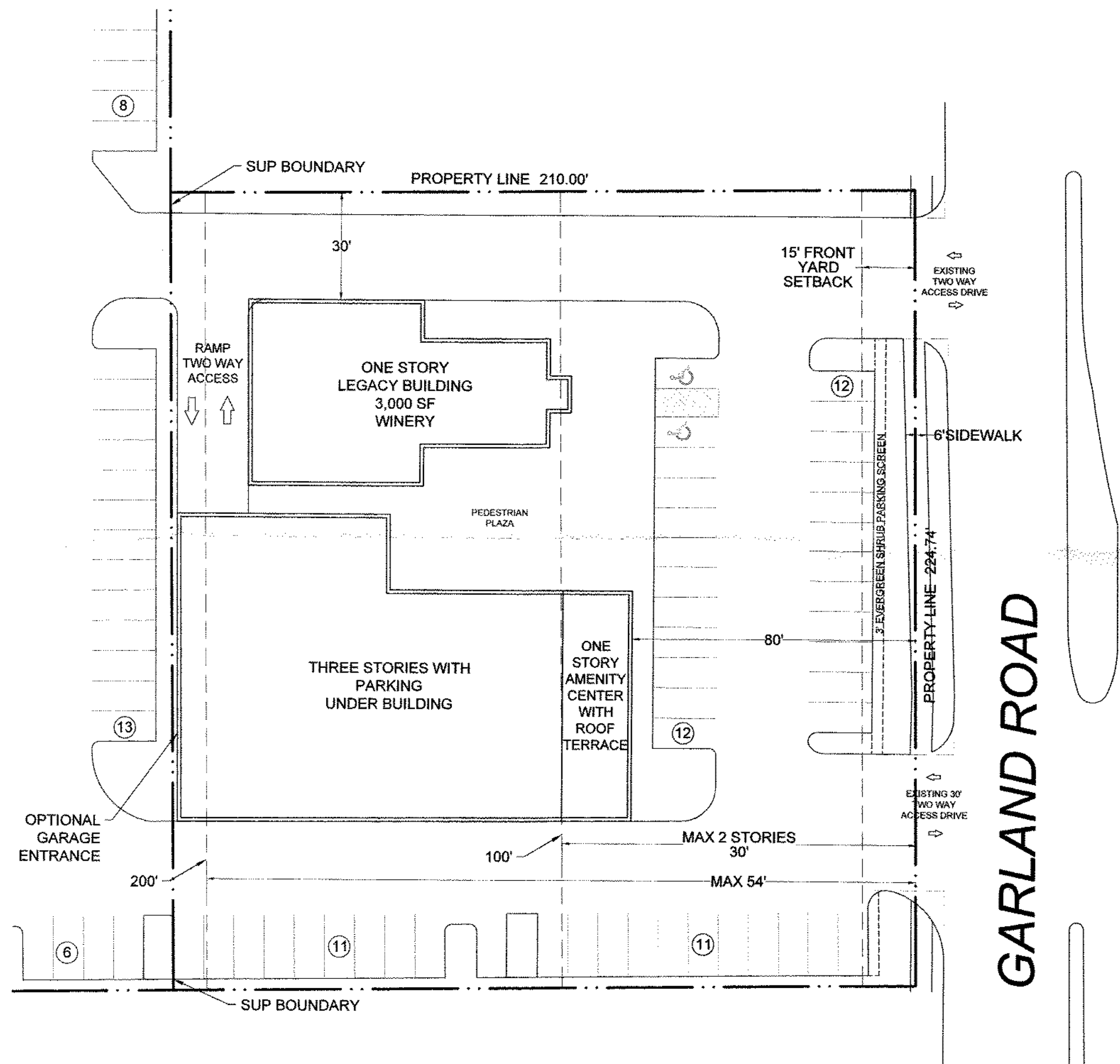




1

SUP SITE PLAN

SCALE: 1" = 20'-0"



VICINITY MAP



12/21/2018

BALDWIN ASSOCIATES
 3904 Elm Street, Suite B
 Dallas, Texas 75226
 MOBILE: 214.729.7949
 OFFICE: 214.824.7949
 rob@baldwinplanning.com

Baldwin Associates

SUP SITE AREA	47032 SF; 1.0797 ACRES	
SUP LAND USE	MICROBREWERY, MICRO-DISTILLERY, OR MICROWINERY	
FLOOR AREA	3,000 SF	
PARKING		
	REQ.	PROVIDED
LEGACY BUILDING	14	14

9353 GARLAND ROAD
 CITY OF DALLAS, TEXAS

31130

Specific Use Permit
No. 2323

APPROVED BY
CITY COUNCIL
FEB 27 2019
CITY SECRETARY

190348

Approved
City Plan Commission
January 9, 2019

Z178-382(JM)

