

Kevin Joel Parada, Et Al
 Doc. No. 2015-00083606 D.C.O.P.R.
 Sergio Bueno
 Doc. No. 2016-00135512 D.C.O.P.R.

Carl Dwayne Miller,
 Et Ux
 Vol. 95139, Pg. 1004
 D.C.D.R.

Dedicated to the Public
 Vol. 403, Page 104
 D.C.D.R.

Called 0.2479 Acres
 Tract 4
 Liberty Bankers Life Insurance Company
 Doc. No. 2011-00335371
 D.C.O.P.R.

Called 2.184 Acres
 Rylie Independent School District
 Vol. 4994, Pg. 492
 D.C.D.R.

Called 11.973 Ac.
 Rylie Independent School District
 Vol. 4994, Pg. 217
 D.C.D.R.

**SOLOMON DUNCAN SURVEY, A-407
 DALLAS COUNTY, TEXAS**

Called 5 Ac.
 J.T. McDonald
 Vol. 96193, Pg. 7675
 D.C.D.R.

Called 0.20 Ac.
 David Ruback
 201700249573
 D.C.O.P.R.

**C.A. CADE ADDITION
 (UNRECORDED)**

Lois Stewart MacAllister
 201500107736
 D.C.O.P.R.

PFC from which a
 1/2" IRF w/PC
 (bent) bears N
 39°35'16" W, 4.80'
 and a 6" wooden
 fence corner post
 bears S 47°02'34" W,
 1.77'

Called 0.6751
 Joe Shaw
 Vol 2003179, Pg. 1974
 D.C.O.P.R.

Tract 2
 Scott Luna
 201500317793
 D.C.O.P.R.

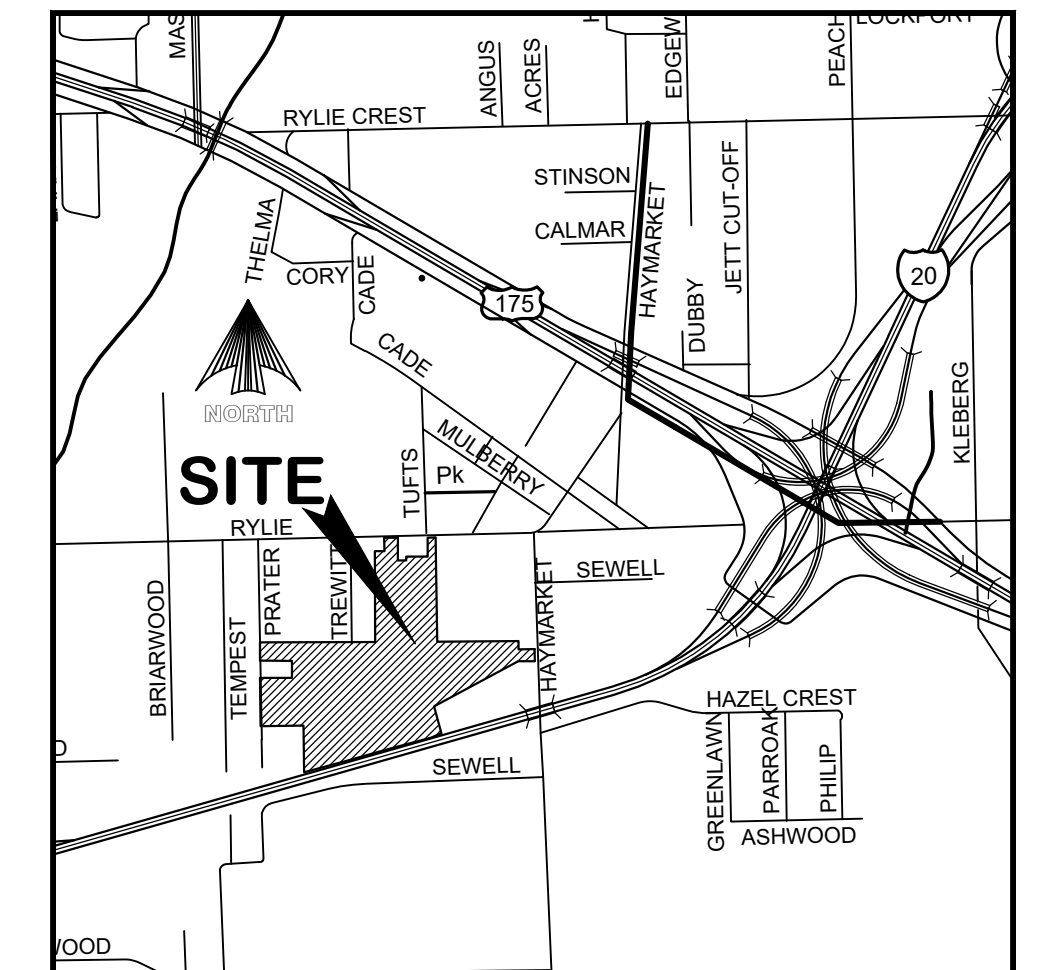
Tract 1
 Scott Luna
 201500317793
 D.C.O.P.R.

Called 1.452 Ac.
 Gabriela Rodriguez
 20070290436
 D.C.O.P.R.

Called 0.0491 Ac.
 Juan Pablo Salcido
 20070010557 D.C.O.P.R.

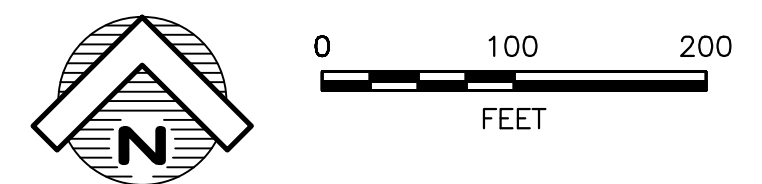
Residue of Called 27.4555 Acres
 Tract 3
 Liberty Bankers Life Insurance Company
 Doc. No. 2011-00335371
 D.C.O.P.R.

Called 0.2184 Acres
 1 Part 1
 State of Texas
 Doc. No. 2015-00172067
 D.C.O.P.R.



VICINITY MAP
 NOT TO SCALE

NOTE: THE LANDPLAN IN THIS EXHIBIT IS BASED ON AVAILABLE INFORMATION PROVIDED BY THE OWNER. INFORMATION HAS NOT BEEN VERIFIED BY FIELD SURVEY. THIS PRELIMINARY PLAN IS INTENDED FOR REFERENCE PURPOSES ONLY. ACTUAL LOT YIELD AND INFRASTRUCTURE COST PROJECTIONS CANNOT BE DETERMINED UNTIL FURTHER DETAILED SITE CONDITIONS ARE DETERMINED.



**CONCEPTUAL PLAN
 HAYMARKET**

CITY OF DALLAS, DALLAS COUNTY, TEXAS

* ACCESS POINTS



7075 Twin Hills Ave
 Suite 350
 Dallas, Texas 75231
 Firm TX F6701
 214.370.3470 Ph

FEBRUARY 9, 2020

© Copyright 2021 Ion Design Group, LLC. All rights reserved.