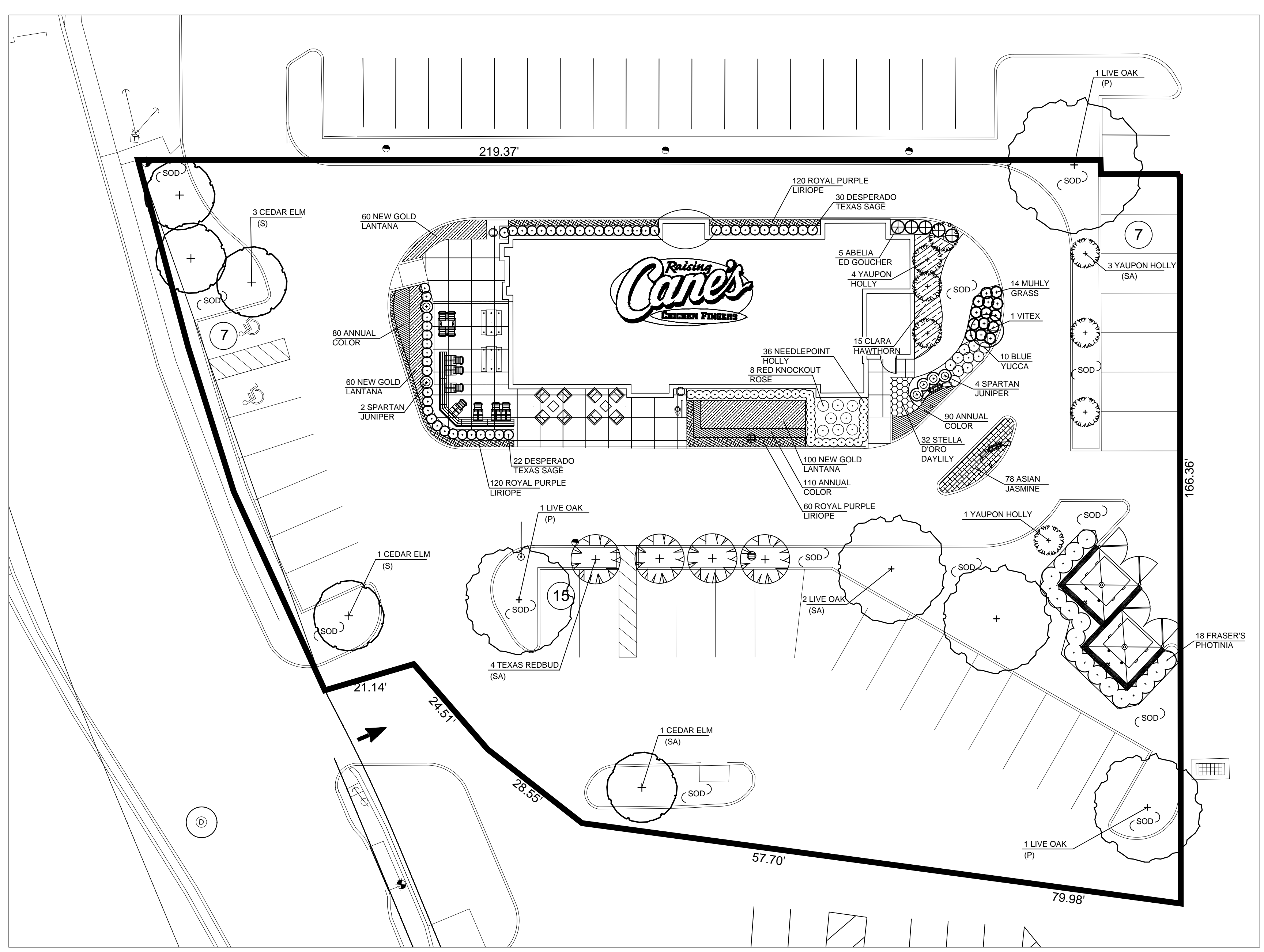
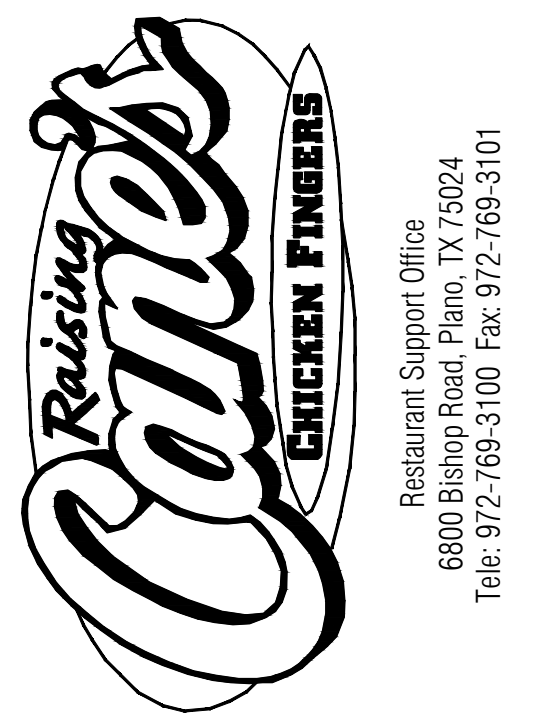


Plotted By: Francisco Serrano Sheet Set: kha Layout: D-Size Layout S:\CAD FILES\RC\2019 RC Projects\RC 336 Dallas TX\cad files\02.L1.0 2-27-19 RC 336 Dallas TX Landscape Plan.dwg



**Plant Schedule RC#336 Dallas TX 2/27/19**

Qty	Common Name	Botanical Name	Size	Planting	Remarks
5	Live Oak	Quercus virginiana	4" @ 12" o.g.	as shown	Full, container grown
5	Cedar Elm	Ulmus crassifolia	3" @ 12" o.g.	as shown	Full, container grown
4	Texas Redbud	Cercis canadensis 'texensis'	2"	as shown	Full, specimen form, container grown
8	Yaupon Holly	Ilex vomitoria	6"	as shown	Leggy, tree form
1	Abbeville Blue Vitex	Vitex agnus-castus 'Abbeville Blue'	6"	as shown	Full, container grown
18	Fraser's Photinia	Photinia x fraseri	5"	as shown	Full, container grown
2	Spartan Juniper	Juniperus chinensis 'Spartan'	8"	as shown	Full, container grown
4	Spartan Juniper	Juniperus chinensis 'Spartan'	4-5'	as shown	Full, container grown
10	Blue Yucca	Yucca pendula	3 gal	as shown	Full, container grown
15	Clara Hawthorn	Raphiolepis indica 'Clara'	3 gal	@ 30" o.c.	Full, container grown
52	Desperado Texas Sage	Leucophyllum frutescens 'Desperado'	24" ht	as shown	Full, container grown
5	Goucher Abelia	Abelia x grandiflora 'Edward Goucher'	3 gal	as shown	Full, container grown
8	Knockout Rose Red	Rosa spp. Red Knockout	3 gal	as shown	Full, container grown
14	Muhly Grass	Muhlenbergia capillaris	3 gal	as shown	Full, container grown
36	Needlepoint Holly	Ilex comuta 'Needlepoint'	3 gal	@ 22" o.c.	Full, container grown
80	Asian Jasmine	Trachelospermum asiaticum	1 gal	@ 12" o.c.	Full, container grown
220	New Gold Lantana	Lantana camara 'New Gold'	1 gal	@ 12" o.c.	Full, container grown
300	Royal Purple Liriope	Liriope muscari 'Royal Purple'	1 gal	@ 16" o.c.	Full, container grown
32	Stella D'oro Daylily	Daylily 'Stella D'Oro'	1 gal	@ 12 o.c.	Full, container grown
280	Annual Color	Seasonal choice	4" pot	@ 8" o.c.	Full, container grown



Restaurant Support Office  
6800 Bishop Road, Plano, TX 75024  
Tel: 972-769-3100 Fax: 972-769-3101

Store:  
**RAISING CANE'S**  
1900 Webb Chapel Rd.  
DALLAS, TX 75234  
Store #336

Professional of Record:



1101 Central Expressway South  
Suite 220  
Allen, TX 75013  
469.619.1164

Professional of Record: Cynthia Cash



18-1203

Prototype Issue Date:

Design Bulletin Updates:  
Date Issued: 07.12.2016 Bulletin Number:

**PERMIT**

Revisions:

#	Date	Description
01	2/27/19	City comments

Sheet Title:

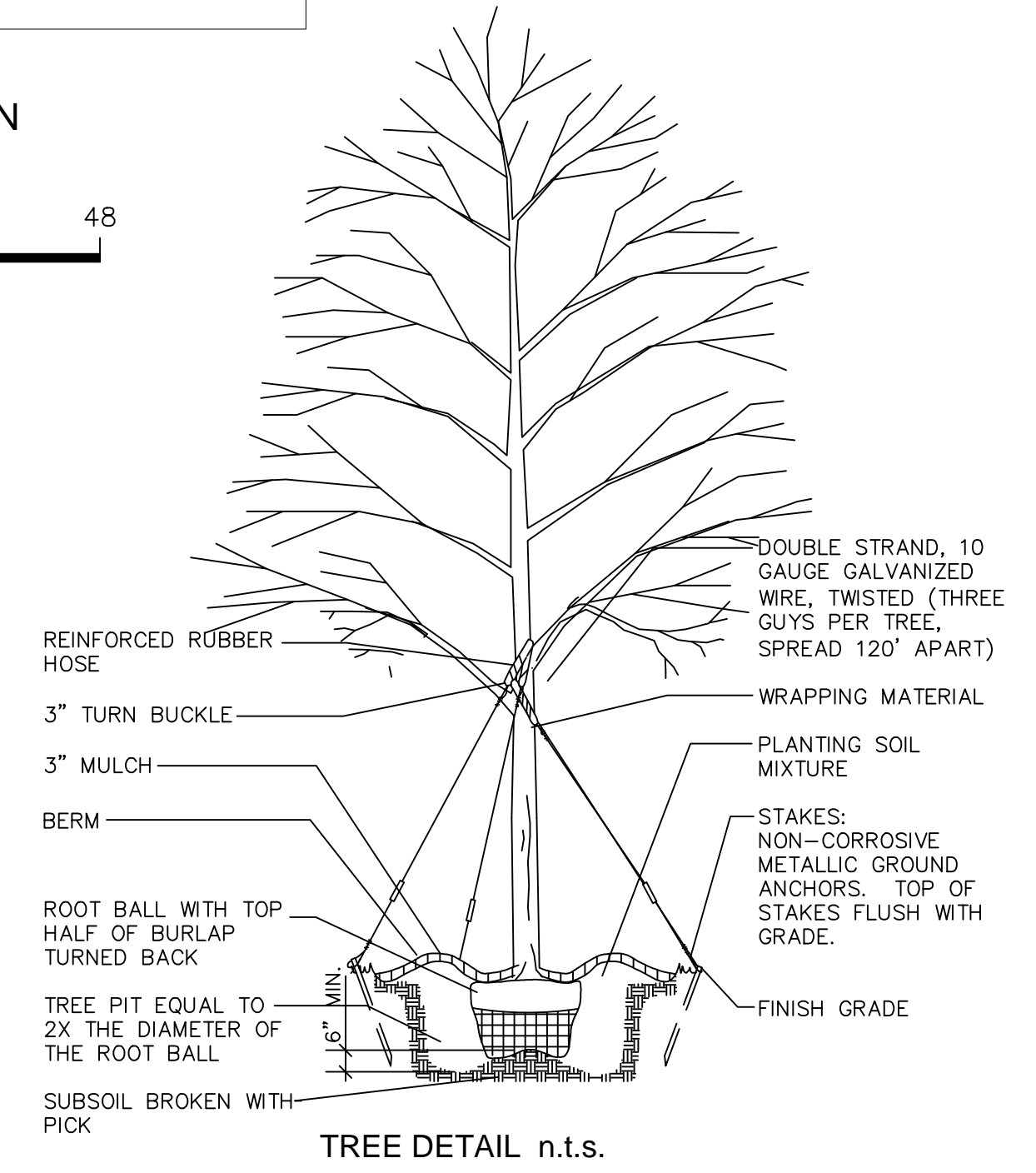
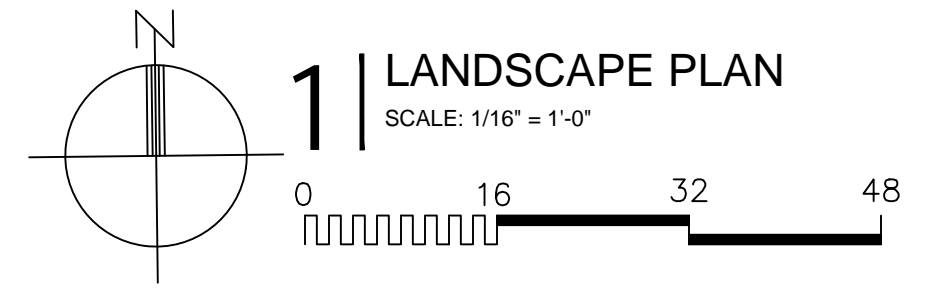
Date: 07/12/2016

Project Number: RAC16029.0

Drawn By: ---

Sheet Number:

- LANDSCAPE NOTES:**
- INSTALL 4" MIN. TOP SOIL TO ALL SOD AND SEED AREAS. CONTRACTOR IS RESPONSIBLE FOR FINE GRADING OF SOD AND SEED AREAS. REMOVE STONES, STICKS, AND DEBRIS LARGER THAN 1".
  - ALL SHRUB AREAS, UNLESS SPECIFIED AS OTHER, TO BE BED MULCHED WITH 3" DEPTH OF PARTIALLY DECOMPOSED HARDWOOD MULCH OVER WEED BARRIER.
  - PLANTING SOIL SHALL CONSIST OF 50% SELECT LOAMY TOPSOIL, 25% PEAT MOSS, 25% PIT RUN SAND.
  - GUARANTEE ALL WORK FOR A PERIOD OF ONE YEAR BEGINNING AT THE DATE OF ACCEPTANCE. MAKE ALL REPLACEMENTS PROMPTLY AS PER DIRECTION OF OWNER.
  - MATERIAL SHALL COMPLY WITH THE LATEST EDITION OF THE AMERICAN STANDARD FOR NURSERY STOCK, AMERICAN ASSOCIATION OF NURSERYMEN.
  - WATER AND MAINTAIN ALL PLANT MATERIALS, SEED AND SOD UNTIL INITIAL ACCEPTANCE.
  - REPAIR AT NO COST TO OWNER ALL DAMAGE TO PROPERTY RESULTING FROM LANDSCAPE WORK.
  - CALL 811 TO NOTIFY UTILITY COMPANY FOR LOCATING ALL UNDERGROUND UTILITIES. AVOID DAMAGE TO UTILITIES DURING THE COURSE OF THE WORK. REPAIR ANY DAMAGE TO UTILITIES, SITE STRUCTURES, ETC., RESULTING FROM LANDSCAPE CONSTRUCTION.
  - COORDINATE INSTALLATION WITH WORK OF OTHER SECTIONS.
  - STAKING AND GUYING OF TREES PER NATIONAL NURSERYMANS STANDARDS.
  - SWEEP AND WASH ALL PAVED SURFACES AND REMOVE ALL DEBRIS RESULTING FROM LANDSCAPE OPERATIONS.
  - FIELD VERIFY SOD LIMITS PRIOR TO INSTALLATION.
  - UNDERGROUND IRRIGATION SYSTEM PLANS DESIGNED BY A LICENSED IRRIGATOR WILL BE SUBMITTED WITH THE BUILDING PERMIT APPLICATION
  - CONTRACTOR SHALL PROVIDE A MINIMUM 2% SLOPE AWAY FROM ALL STRUCTURES.



**LANDSCAPE CALCULATIONS**  
RC 336 Dallas TX 2/27/2019

Item	Required	Provided	Notes
<b>1. Street Trees (S):</b>	129 l.f.	4	Required: 1 Tree @ 40'
		4	Cedar Elm, 3"
		4	Total Trees
<b>2. Parking Lot Trees (P)</b>	4	4	Required: No space further than 70' per tree
		4	Live Oak 3", as shown
		4	Total Trees Provided
<b>3. Site Area Trees (SA):</b>	32,339 s.f.	8	lot size
	4,000.00	1	Area / 4,000
		4	Tree
		4	Cedar Elm
		4	Texas Redbud
		4	Yaupon Holly (8/2-4)
		9	Total Trees
<b>4. Landscape Design Options:</b>	32,339 s.f.	15	lot size
		5	Required
Provided: Option 1 (A) Increased caliper of req. trees 1 inch		5	Points
Option 5 (D) One small tree + 2 shrubs @ 30'		5	Points
Option 6 (B) Special amenities: private plaza provided		5	Points
		15	Total Points