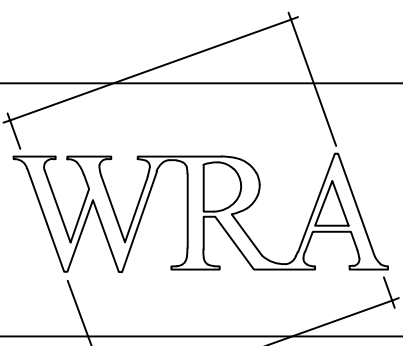
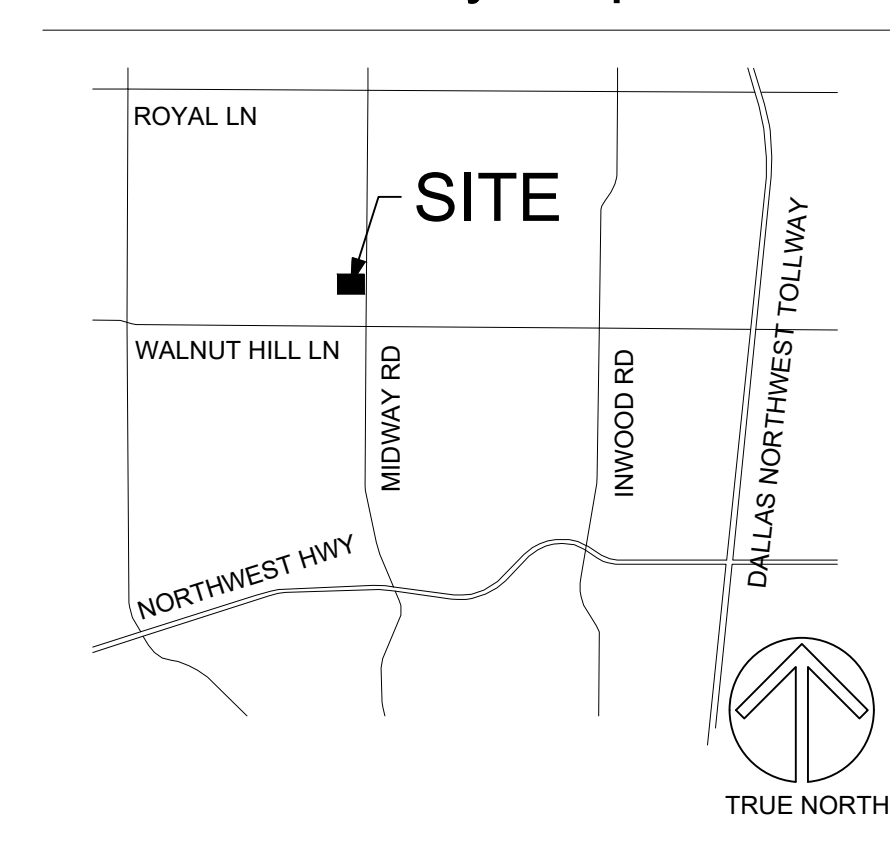


FIELDFARE DR.

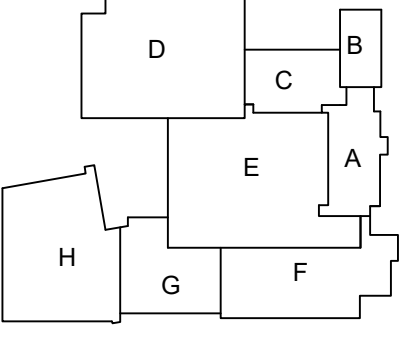
KILLION DR.

Vicinity Map

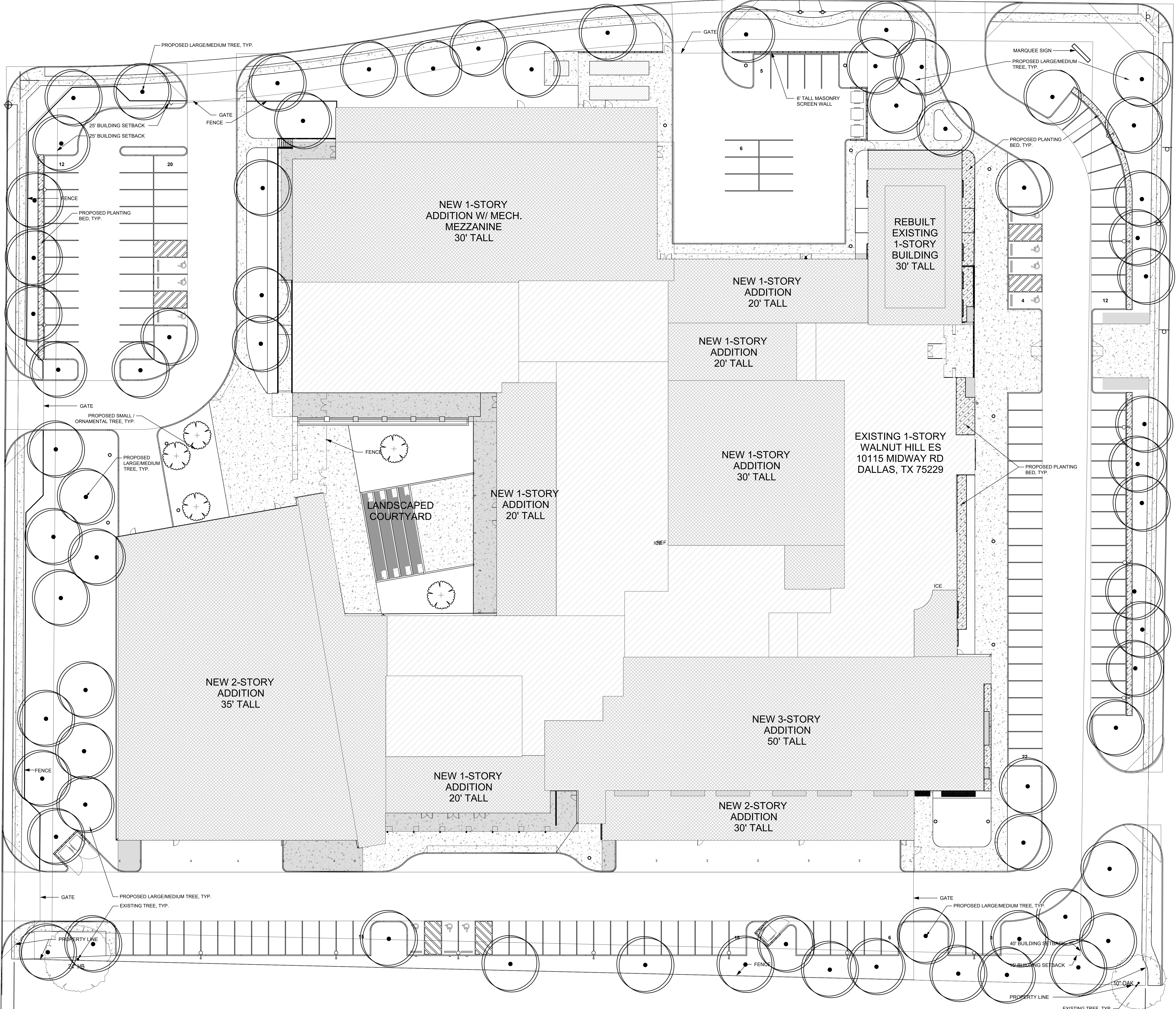


WRA Architects, Inc.  
12377 Merit Drive  
Suite 1800  
Dallas, Texas 75251  
214.750.0077 voice  
214.750.5931 fax  
www.wraarchitects.com

NOTE:  
THIS PRELIMINARY DRAWING IS  
FOR INFORMATION ONLY. IT IS NOT  
FOR CONSTRUCTION. PERMIT  
APPLICATION OF  
CONSTRUCTION



**Career Institute North at Walnut Hill**  
10115 Midway Rd, Dallas, TX 75229



MIDWAY RD.

**EXISTING TREE TO REMAIN**

- CEDAR ELM / *ULMUS CRASSIFOLIA*
- LACEBARK ELM / *ULMUS PARVIFOLIA*
- LIVE OAK / *QUERCUS VIRGINIANA*
- BUR OAK / *QUERCUS MACROCARPA*
- CHINQUAPIN OAK / *QUERCUS MULHENBERGII*
- SHUMARD OAK / *QUERCUS SHUMARDII*
- CHINESE PISTACHE / *PISTACIA CHINENSIS*
- BALD CYPRESS / *TAXODIUM DISTICHUM*

**PROPOSED LARGE / MEDIUM TREE (3" CALIPER MIN.)**

- YUCCA / *YUCCA OR HESPERALOE PARVIFLORA* SPP.
- INDIAN HAWTHORN / *RAPIHOLEPIS SPP.*
- HOLLY / *ILEX SPP.*
- NANDINA / *NANDINA DOMESTICA*
- SAGE / *SALVIA SPP.*
- TEXAS SAGE / *LEUCOPHYLLUM FRUTESCENS*
- ROSEMARY / *ROSEMARINUS SPP.*
- MUHLY GRASS / *MULHENBERGIA SPP.*

**PROPOSED SMALL / ORNAMENTAL TREE (2" CALIPER MIN.)**

- DESERT WILLOW / *CHILOPSIS LINEARIS*
- RED BUD / *CERCIS CANADENSIS* OR *REINFORMIS*
- CRAPE MYRTLE / *LAGERSTROEMIA INDICA*
- EVIS NECKLACE / *SOPHORA AFFINIS*
- YAUPOH HOLLY / *ILEX VOMITORIA*
- BLACKHAW VIBURNUM / *VIBURNUM RUFIDULUM*

**PROPOSED PLANTING BED:**

- SHRUBS (ORN. GRASSES (MIN. 3 GALLON))
- GROUND COVER PLANTING (MIN. 4" POT)
- LIRIOPE / *LIRIOPE SPP.*
- WINTERCREEPER / *EUONYMUS FORTUNEI*
- MEXICAN FEATHER GRASS / *NASSELLA TENUISSIMA*

**IRRIGATION NOTE:**  
ALL CODE REQUIRED TREES AND SHRUBS TO EITHER BE WATERED BY A PERMANENT IRRIGATION SYSTEM OR A TEMPORARY IRRIGATION, PLANTINGS TO BE LOCATED WITHIN 200 FEET OF WATER SOURCE SUCH AS A PERMANENT HOSE BIB.

**CITY OF DALLAS ORDINANCE, SEC. 51A-10.01:**  
ALL CODE REQUIRED TREES AND SHRUBS WILL BE PLANTED IN COMPLIANCE WITH SECTION 51A-10.104 SOIL AND PLANTING AREA REQUIREMENTS.

Plant Material	Planting	Planting	Planting
1" Plant material (max. 1' plants)	100 plants per 100 sq ft	100 plants per 100 sq ft	100 plants per 100 sq ft
2" Plant material (max. 2' plants)	50 plants per 100 sq ft	50 plants per 100 sq ft	50 plants per 100 sq ft
3" Plant material (max. 3' plants)	25 plants per 100 sq ft	25 plants per 100 sq ft	25 plants per 100 sq ft
4" Plant material (max. 4' plants)	15 plants per 100 sq ft	15 plants per 100 sq ft	15 plants per 100 sq ft
5" Plant material (max. 5' plants)	10 plants per 100 sq ft	10 plants per 100 sq ft	10 plants per 100 sq ft
6" Plant material (max. 6' plants)	7 plants per 100 sq ft	7 plants per 100 sq ft	7 plants per 100 sq ft
7" Plant material (max. 7' plants)	5 plants per 100 sq ft	5 plants per 100 sq ft	5 plants per 100 sq ft
8" Plant material (max. 8' plants)	4 plants per 100 sq ft	4 plants per 100 sq ft	4 plants per 100 sq ft
9" Plant material (max. 9' plants)	3 plants per 100 sq ft	3 plants per 100 sq ft	3 plants per 100 sq ft
10" Plant material (max. 10' plants)	2 plants per 100 sq ft	2 plants per 100 sq ft	2 plants per 100 sq ft

**DESIGN OPTION PROVISIONS:**

**(1) Plant material (max. 1' plants) - 10 points maximum:** Plant material to be installed in the landscape design within the required amount of points for a minimum of 100 plants per 100 sq ft. All plants must be installed in the first year.

**(2) Plant material (max. 2' plants) - 5 points maximum:** Plant material to be installed in the landscape design within the required amount of points for a minimum of 50 plants per 100 sq ft. All plants must be installed in the first year.

**(3) Plant material (max. 3' plants) - 3 points maximum:** Plant material to be installed in the landscape design within the required amount of points for a minimum of 25 plants per 100 sq ft. All plants must be installed in the first year.

**(4) Plant material (max. 4' plants) - 2 points maximum:** Plant material to be installed in the landscape design within the required amount of points for a minimum of 15 plants per 100 sq ft. All plants must be installed in the first year.

**(5) Plant material (max. 5' plants) - 1 point maximum:** Plant material to be installed in the landscape design within the required amount of points for a minimum of 10 plants per 100 sq ft. All plants must be installed in the first year.

**(6) Plant material (max. 6' plants) - 1 point maximum:** Plant material to be installed in the landscape design within the required amount of points for a minimum of 7 plants per 100 sq ft. All plants must be installed in the first year.

**(7) Plant material (max. 7' plants) - 1 point maximum:** Plant material to be installed in the landscape design within the required amount of points for a minimum of 5 plants per 100 sq ft. All plants must be installed in the first year.

**(8) Plant material (max. 8' plants) - 1 point maximum:** Plant material to be installed in the landscape design within the required amount of points for a minimum of 4 plants per 100 sq ft. All plants must be installed in the first year.

**(9) Plant material (max. 9' plants) - 1 point maximum:** Plant material to be installed in the landscape design within the required amount of points for a minimum of 3 plants per 100 sq ft. All plants must be installed in the first year.

**(10) Plant material (max. 10' plants) - 1 point maximum:** Plant material to be installed in the landscape design within the required amount of points for a minimum of 2 plants per 100 sq ft. All plants must be installed in the first year.

**(11) Plant material (max. 11' plants) - 1 point maximum:** Plant material to be installed in the landscape design within the required amount of points for a minimum of 1 plant per 100 sq ft. All plants must be installed in the first year.

**(12) Plant material (max. 12' plants) - 1 point maximum:** Plant material to be installed in the landscape design within the required amount of points for a minimum of 1 plant per 100 sq ft. All plants must be installed in the first year.

**(13) Plant material (max. 13' plants) - 1 point maximum:** Plant material to be installed in the landscape design within the required amount of points for a minimum of 1 plant per 100 sq ft. All plants must be installed in the first year.

**(14) Plant material (max. 14' plants) - 1 point maximum:** Plant material to be installed in the landscape design within the required amount of points for a minimum of 1 plant per 100 sq ft. All plants must be installed in the first year.

**(15) Plant material (max. 15' plants) - 1 point maximum:** Plant material to be installed in the landscape design within the required amount of points for a minimum of 1 plant per 100 sq ft. All plants must be installed in the first year.

**(16) Plant material (max. 16' plants) - 1 point maximum:** Plant material to be installed in the landscape design within the required amount of points for a minimum of 1 plant per 100 sq ft. All plants must be installed in the first year.

**(17) Plant material (max. 17' plants) - 1 point maximum:** Plant material to be installed in the landscape design within the required amount of points for a minimum of 1 plant per 100 sq ft. All plants must be installed in the first year.

**(18) Plant material (max. 18' plants) - 1 point maximum:** Plant material to be installed in the landscape design within the required amount of points for a minimum of 1 plant per 100 sq ft. All plants must be installed in the first year.

**(19) Plant material (max. 19' plants) - 1 point maximum:** Plant material to be installed in the landscape design within the required amount of points for a minimum of 1 plant per 100 sq ft. All plants must be installed in the first year.

**(20) Plant material (max. 20' plants) - 1 point maximum:** Plant material to be installed in the landscape design within the required amount of points for a minimum of 1 plant per 100 sq ft. All plants must be installed in the first year.

1 Landscape PD Plan  
1" = 20'-0"

REVISIONS: \_\_\_\_\_ Date \_\_\_\_\_

JOB NO. 1949  
DATE: 09/21/2020

Landscape Plan

L100

© WRA Architects, Inc. 1999