

PLANT MATERIAL LIST SUMMARY CHART

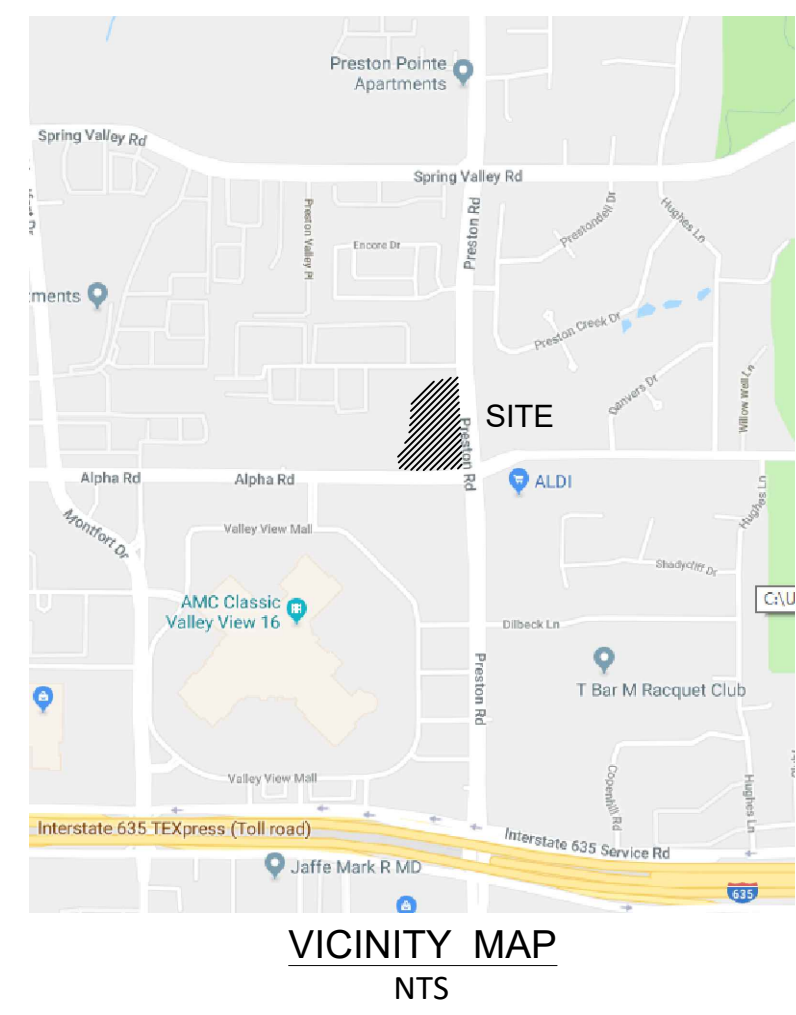
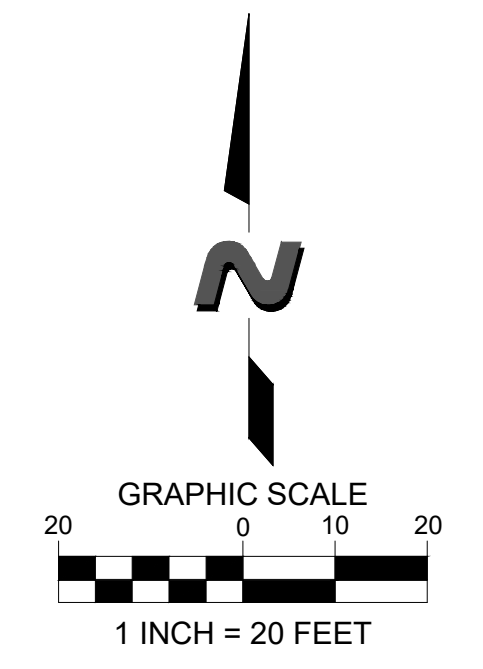
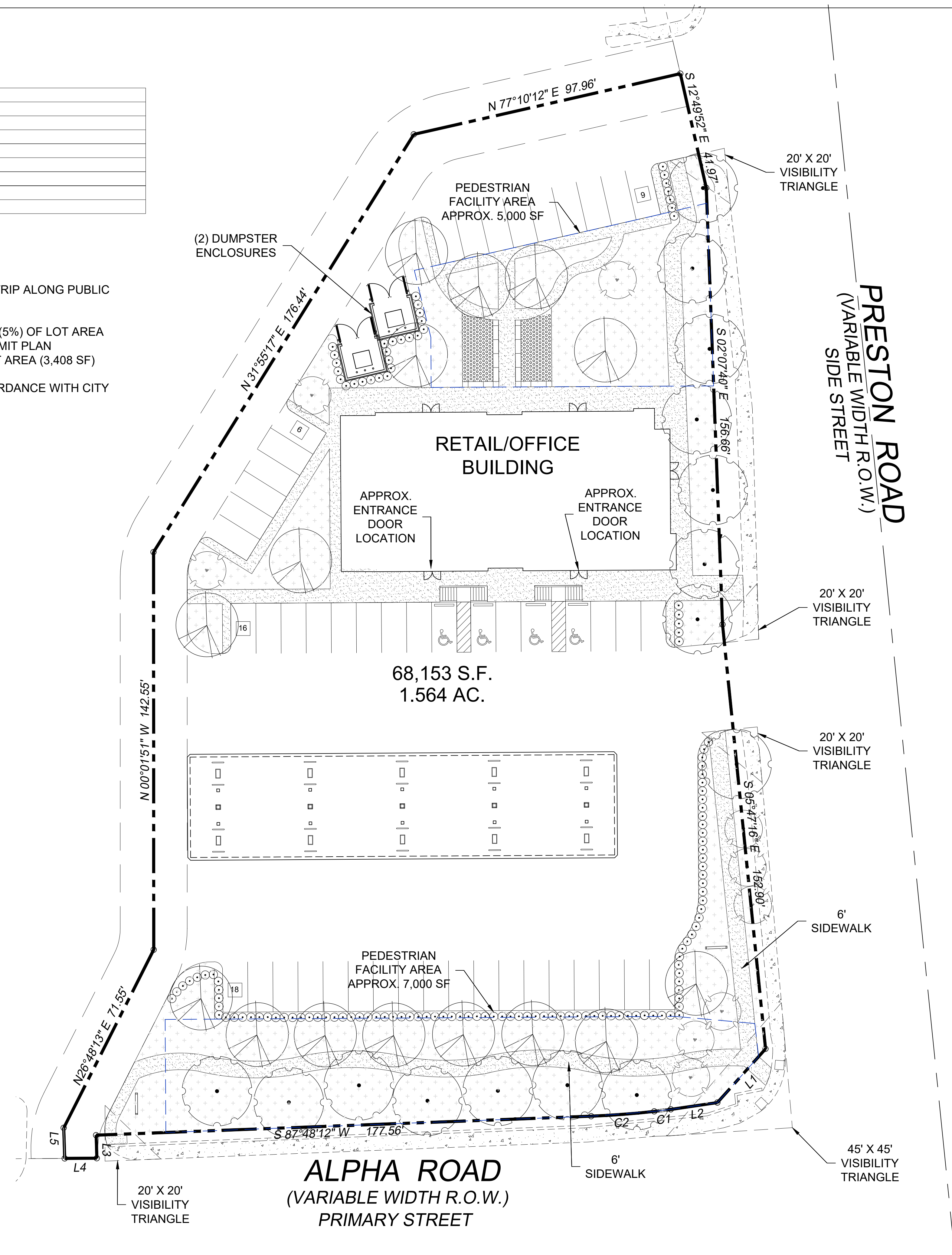
QNTY	TYPE	SIZE	HT	NOTES
CANOPY TREES				
15	STREET TREE	4" CAL.		LARGE CANOPY
15	SITE TREE	4" CAL.		LARGE CANOPY
9	SITE TREE	2.5" CAL.		SMALL CANOPY
SHRUBS				
136	EVERGREEN	7 GAL.		36" MIN.
GROUNDCOVERS				
400	PERENNIAL PLANTS	3 GAL.		24" TRIANGULAR SP.
1,600	TURF GRASS			SOD - SY

DESIGN STANDARDS

- (b) STREET BUFFER; MINIMUM 10' WIDTH LANDSCAPE STRIP ALONG PUBLIC FRONTAGE AS SHOWN
- (c) SCREENING OF OFF-STREET PARKING
- (f) PEDESTRIAN FACILITIES; MINIMUM AREA OF 3,500 SF (5%) OF LOT AREA SEATING AREA TO BE PROVIDED ON LANDSCAPE PERMIT PLAN
- (i) ENHANCED PEDESTRIAN WALKWAYS; MIN. 5% OF LOT AREA (3,408 SF)

NOTE: AUTOMATIC IRRIGATION TO BE PROVIDED IN ACCORDANCE WITH CITY DALLAS REQUIREMENTS.

Texas 811
 CAUTION NOTICE TO CONTRACTORS
 THE CONTRACTOR IS RESPONSIBLE FOR OBTAINING ALL NECESSARY PERMITS AND UTILITIES INFORMATION FROM THE CITY OF DALLAS AND THE UTILITY COMPANIES. THE CONTRACTOR IS RESPONSIBLE FOR VERIFYING THE LOCATION AND DEPTH OF ALL UTILITIES SHOWN ON THESE PLANS. THE CONTRACTOR SHALL BE RESPONSIBLE FOR OBTAINING ALL NECESSARY PERMITS AND UTILITIES INFORMATION FROM THE CITY OF DALLAS AND THE UTILITY COMPANIES. THE CONTRACTOR IS RESPONSIBLE FOR VERIFYING THE LOCATION AND DEPTH OF ALL UTILITIES SHOWN ON THESE PLANS. THE CONTRACTOR SHALL BE RESPONSIBLE FOR OBTAINING ALL NECESSARY PERMITS AND UTILITIES INFORMATION FROM THE CITY OF DALLAS AND THE UTILITY COMPANIES. THE CONTRACTOR IS RESPONSIBLE FOR VERIFYING THE LOCATION AND DEPTH OF ALL UTILITIES SHOWN ON THESE PLANS.



THESE PLANS ARE INSTRUMENTS OF PROFESSIONAL SERVICE AND ARE PROTECTED BY COMMON LAW, STATUTORY AND OTHER RESERVED RIGHTS INCLUDING COPYRIGHT. THEY MAY NOT BE REPRODUCED OR USED FOR ANY PURPOSE WITHOUT THE WRITTEN CONSENT OF THE DIMENSION GROUP.

NO.	DATE	REVISION DESCRIPTION

project no.: 17-217
 date: 11/07/17
 drawn: CJS
 approved: