

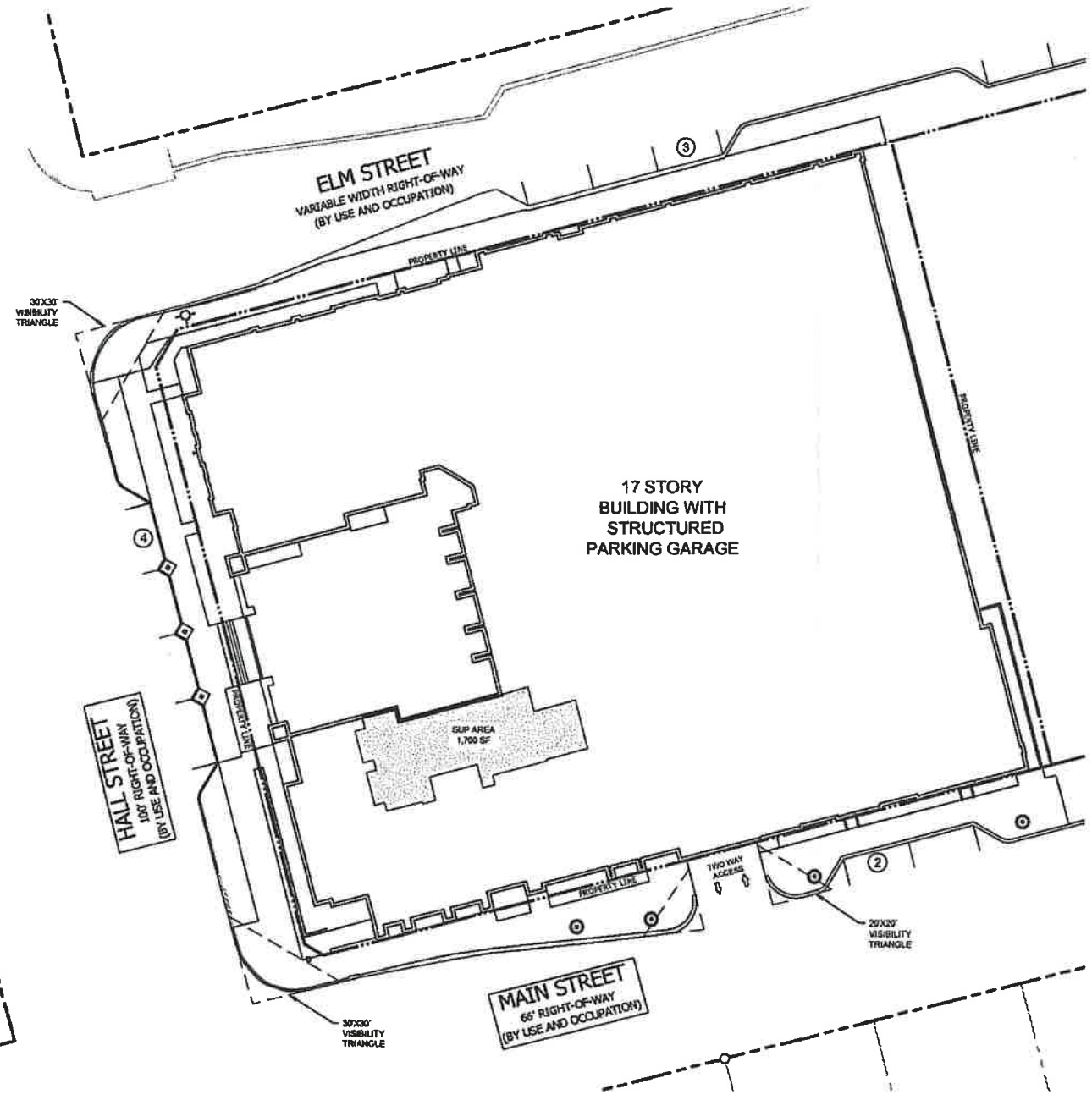
112-681Z

171219

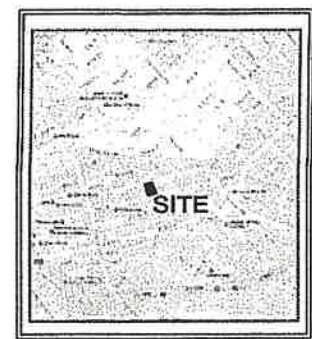
30585

Site Plan

Specific Use Permit  
No. 2253



Approved  
City Plan Commission  
June 22, 2017



SUP FOR BAR, LOUNGE OR TAVERN  
LIMITED TO 1,700 SQUARE FEET  
IN LOCATION SHOWN

LOT AREA: 1.211 ACRES  
ZONING: PD 269 TRACT A

04/18/2017

BALDWIN ASSOCIATES  
3804 Elm Street, Suite B  
Dallas, Texas 75226  
MOBILE: 214.729.7949  
OFFICE: 214.824.7848  
rob@baldwinplanning.com

Baldwin Associates

Z167-283

210 HALL STREET  
CITY OF DALLAS, TEXAS



1 SUP SITE PLAN  
SCALE: 1" = 20'-0"



Z167-283