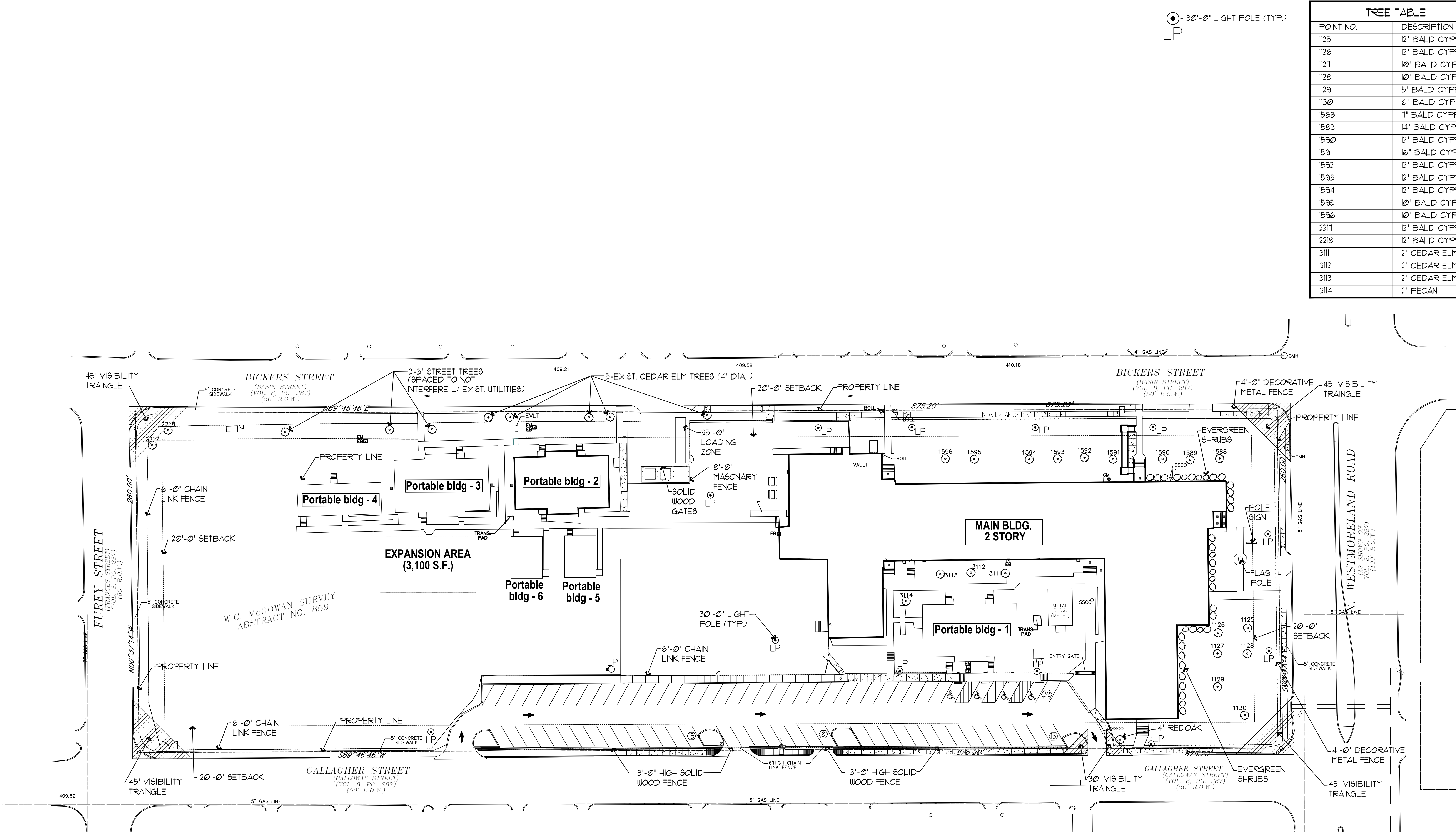


TREE TABLE	
POINT NO.	DESCRIPTION
1125	12' BALD CYPRESS
1126	12' BALD CYPRESS
1127	10' BALD CYPRESS
1128	10' BALD CYPRESS
1129	5' BALD CYPRESS
1130	6' BALD CYPRESS
1588	7' BALD CYPRESS
1589	14' BALD CYPRESS
1590	12' BALD CYPRESS
1591	16' BALD CYPRESS
1592	12' BALD CYPRESS
1593	12' BALD CYPRESS
1594	12' BALD CYPRESS
1595	10' BALD CYPRESS
1596	10' BALD CYPRESS
2217	12' BALD CYPRESS
2218	12' BALD CYPRESS
3111	2' CEDAR ELM
3112	2' CEDAR ELM
3113	2' CEDAR ELM
3114	2' PECAN



SITE DATA TABLE	
USE:	PUBLIC SCHOOL
ZONING:	PD, R-5(A)
LAND AREA:	222,560 SF.
EXISTING FLOOR AREA:	TOTAL 55,544 SF.
MAIN BUILDING	43,422 SF.
PORTABLE BUILDINGS	12,122 SF.
TOTAL EXISTING FLOOR AREA:	55,544 SF.
FUTURE EXPANSION AREA:	3,100 SF.
MAXIMUM ALLOWED FLOOR AREA:	58,644 SF.
LOT COVERAGE:	19.7%
EXISTING BUILDING HEIGHT (2 STORY):	22 FT.
EXISTING CLASSROOMS	TOTAL 22
MAIN BUILDING	14
PORTABLE BUILDINGS	8
REQUIRED PARKING SPACES:	71
TOTAL PARKING SPACES:	71

