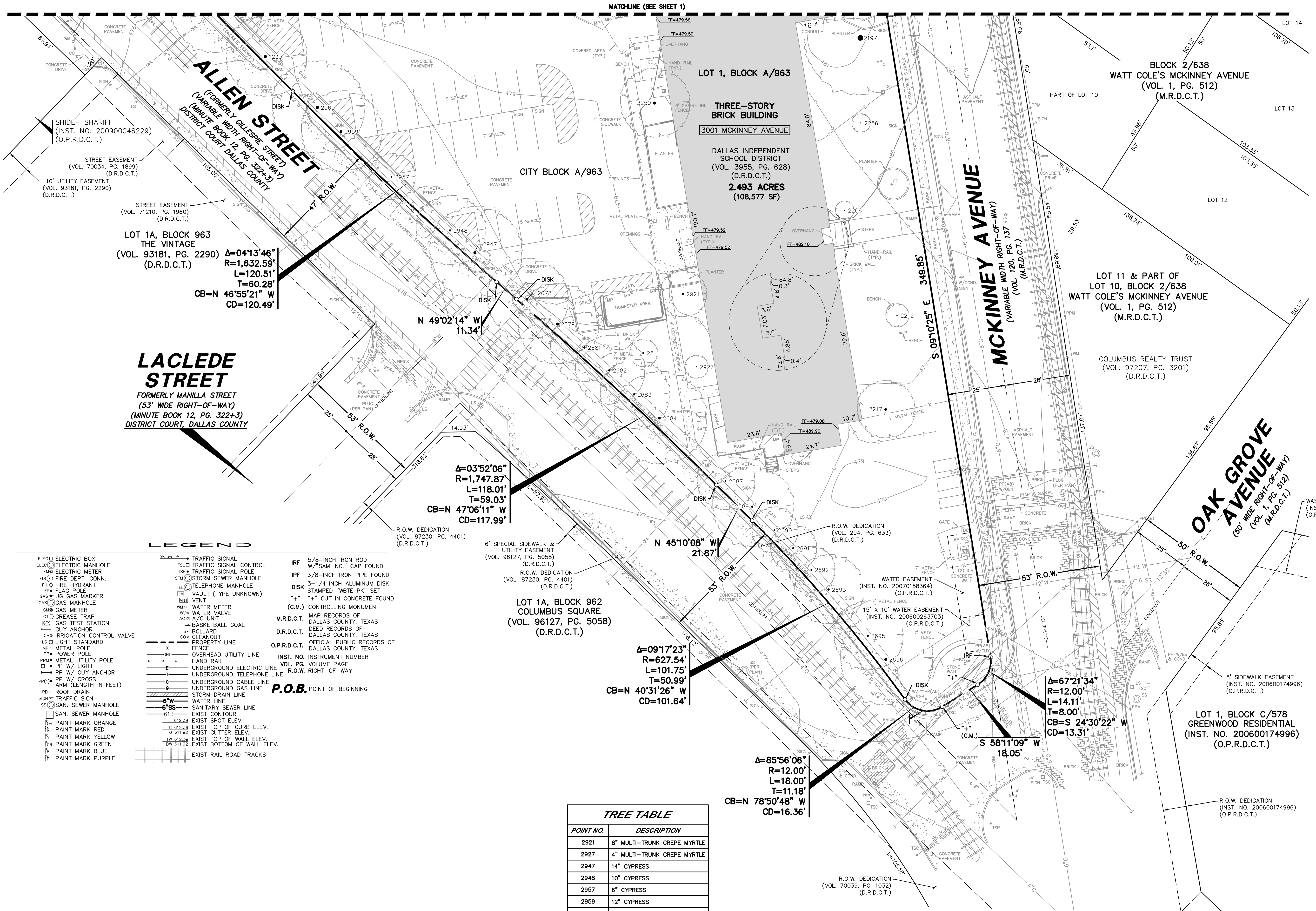


VICINITY MAP



LEGEND

- Legend listing symbols for various features: ELEC (Electric Box), IRF (5/8-inch Iron Rod), IPF (3/8-inch Iron Pipe Found), DISK (3-1/4 inch Aluminum Disk), etc.

Tree Table with columns: POINT NO., DESCRIPTION. Lists trees like 2921 8" Multi-Trunk Crepe Myrtle, 2927 4" Multi-Trunk Crepe Myrtle, etc.

GENERAL NOTES

- General Notes: 1. Bearing system for this survey is based on the State Plane Coordinate System, North American Datum of 1983... 2. Lot to lot drainage will not be allowed without City of Dallas Paving and Drainage Engineering Section Approval.

PRELIMINARY

THIS DOCUMENT SHALL NOT BE RECORDED FOR ANY PURPOSE AND SHALL NOT BE USED OR VIEWED OR RELIED UPON AS A FINAL SURVEY DOCUMENT. RELEASED 5/9/19.

SHEET 2 OF 3 PRELIMINARY PLAT WILLIAM B. TRAVIS ACADEMY LOT 1, BLOCK A/963

BEING OUT OF THE JOHN GRIGSBY SURVEY, ABSTRACT NO. 495, CITY OF DALLAS, DALLAS COUNTY, TEXAS CITY PLAN FILE NO.: S189-199 ENGINEERING PLAN NO.: 3111-

SURVEYOR:

PACHECO KOCH CONSULTING ENGINEERS, INC. 7557 RAMBLER ROAD, SUITE 1400 DALLAS, TEXAS 75231 PH: (972) 235-3031 CONTACT: JUSTIN WALDRIP

OWNER:

DALLAS INDEPENDENT SCHOOL DISTRICT 3700 ROSS AVENUE DALLAS, TEXAS 75204 PH: (972) 925-7200 CONTACT: DON SMITH

Pacheco Koch logo and contact information: 7557 RAMBLER ROAD, SUITE 1400 DALLAS, TX 75231 972.235.3031 TX REG. ENGINEERING FIRM F-469 TX REG. SURVEYING FIRM LS-10089000

Table with columns: DRAWN BY (CO/DHM), CHECKED BY (MWW/JWW), SCALE (1"=20'), DATE (MAY 2019), JOB NUMBER (3226-17.495)

MWER 119 1:45 PM 17/05/2019 17:45:55 (DWG) SURVEY C:3D 2015\3226-17.495\PPF (REVISED)

PRELIMINARY PLAT - WILLIAM B. TRAVIS ACADEMY, LOT 1, BLOCK A/963