

$\Delta = 27^{\circ}56'06''$
 $R = 368.00'$
 $L = 179.42'$
 $CB = N71^{\circ}18'47''E$
 $CD = 177.65'$

$\Delta = 6^{\circ}31'55''$
 $R = 810.51'$
 $L = 92.40'$
 $CB = S05^{\circ}09'03''E$
 $CD = 92.35'$

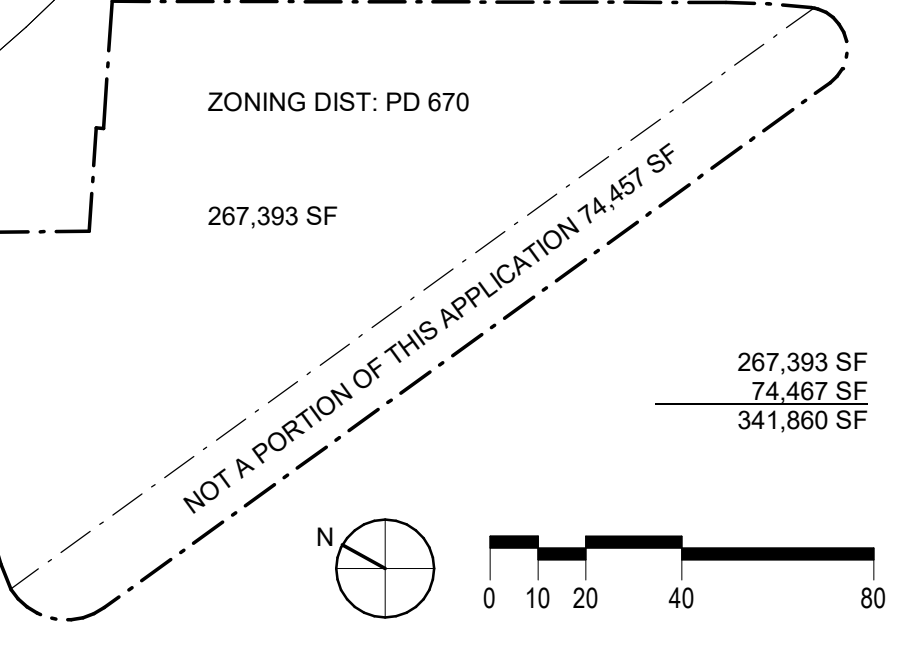
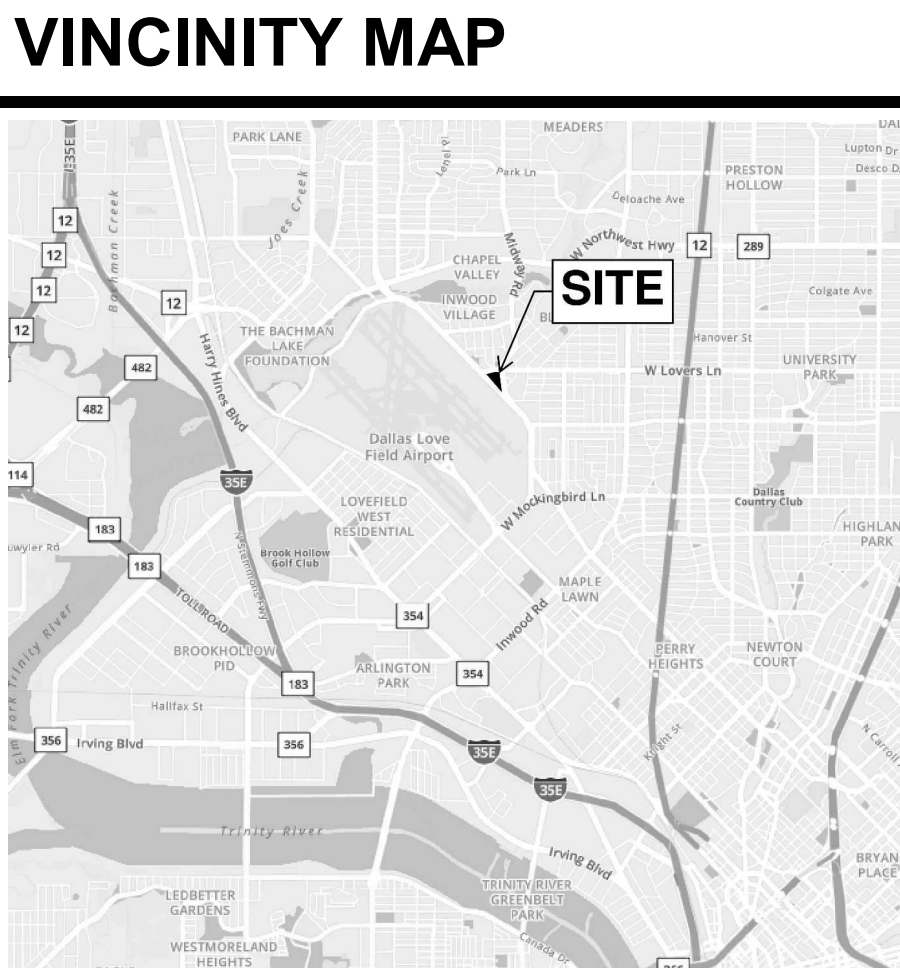
$\Delta = 10^{\circ}54'59''$
 $R = 42.00'$
 $L = 8.00'$
 $CB = S03^{\circ}34'10''W$
 $CD = 7.99'$

NOT PART OF THIS APPLICATION

PARKING DATA		
	REQUIRED	PROVIDED
CUSTOMER PARKING	25	38
HANDICAPPED PARKING	4	4
EMPLOYEE PARKING	44	49
INVENTORY PARKING		166
IN-SERVICE PARKING		120
DISPLAY PARKING *		10
TOTAL	73	387

GENERAL LEGEND				
BUILDING	EX. BLDG. SF.	PROPOSED BLDG. SF AFTER EXPANSION	MAXIMUM BLDG. SF PER PD	REMAINING BLDG. SF. AFTER EXPANSION
MAIN BUILDING				
SERVICE SHOP & PARTS	17,109	29,159	30,000	841
SERVICE DRIVE	4,340	4,340	10,300	5,960
SHOWROOM & SALES	13,675	13,675	18,000	4,325
DETAIL AREA	2,800	2,800	7,000	4,200
PHASE II	3,664	3,664	10,000	6,336
TOTAL SF	41,588	53,638	75,300	

*NO CHANGES PREPOSED LANDSCAPE



DEVELOPMENT & LANDSCAPE PLAN

SEWELL SUBARU OF DALLAS
 7800 LEMMON AVE
 DALLAS, TEXAS 75209

ISSUE DATE: MAY. 24, 2021

M201-023