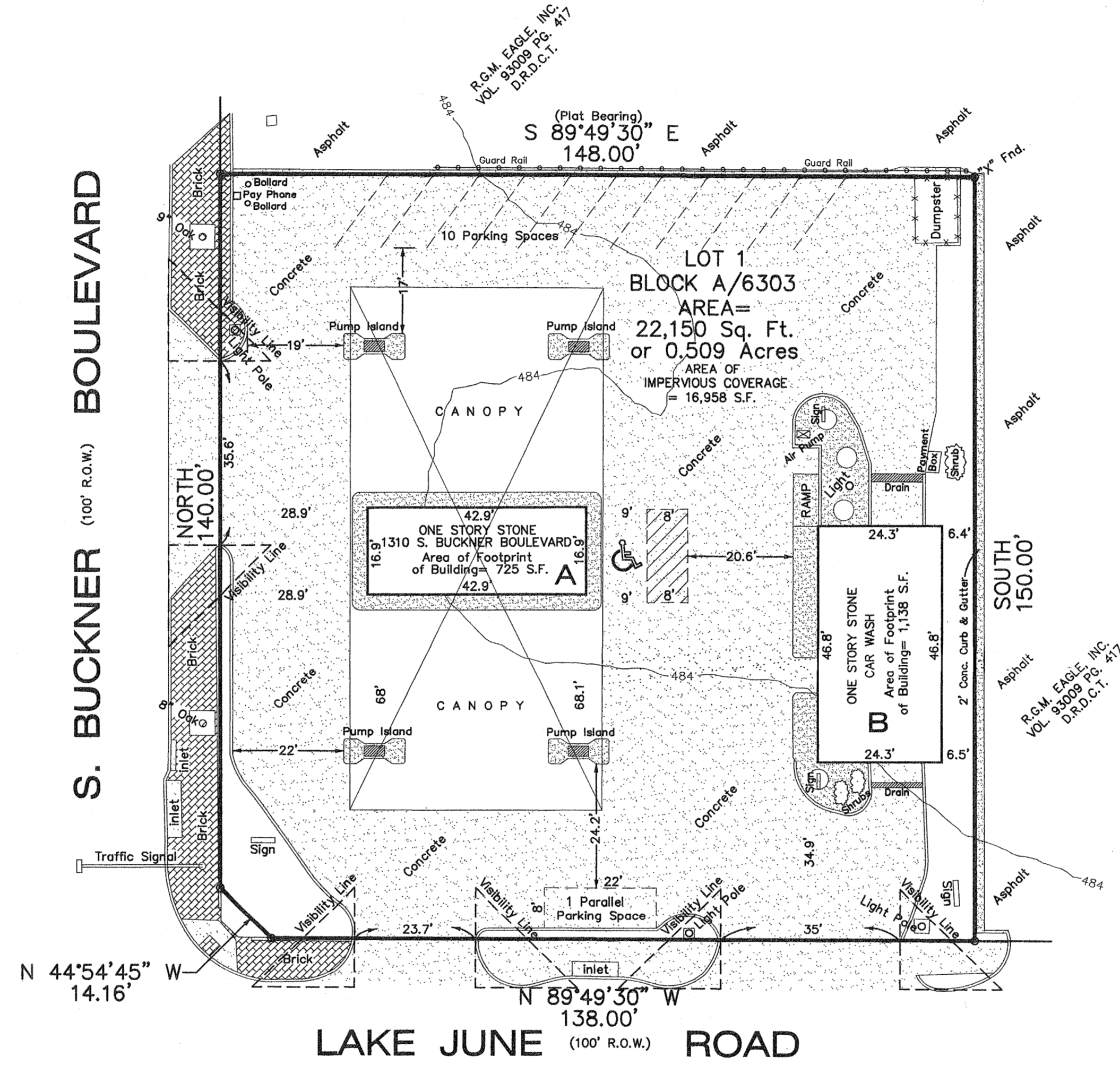
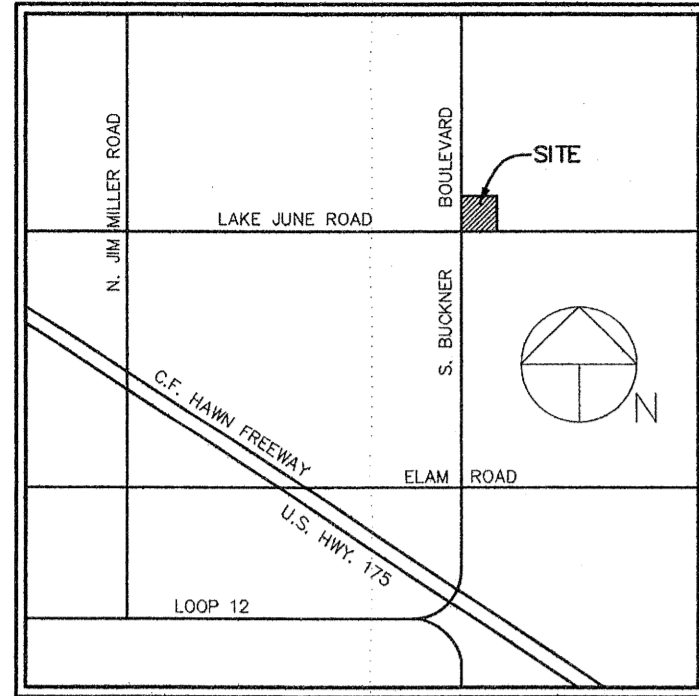
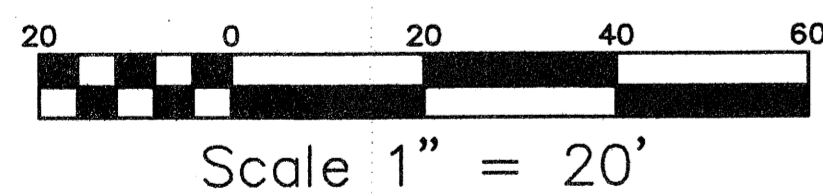
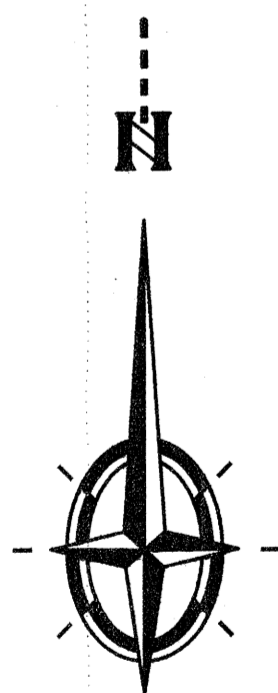


VICINITY MAP  
(Not to Scale)  
(Mapscop Page 58-L)



**SITE PLAN**  
**CIRCLE K STORE**  
**1310 S. BUCKNER BOULEVARD**  
**DALLAS, TX. 75217**  
**LOT 1, BLOCK A/6303**  
**Phillips Buckner Addition**  
**Volume 87172, Page 2202**  
**Map Records, Dallas County, Texas**  
**J.A. Leonard Survey, Abstract No. 802**  
**City of Dallas, Dallas County, Tx.**

MARCH 14, 2016



1310 S. BUCKNER BOULEVARD  
 ZONED: PD

PARKING TABLE

	REQUIRED PARKING	PROPOSED PARKING
1310 S. Buckner Boulevard	Building "A": 725 Square Feet - 4 Parking Spaces Building "B": 1,138 Square Feet - 6 Parking Spaces Gas Pumps: 2 Parking Spaces 12 TOTAL PARKING SPACES (of which 1 must be Handicapped Parking Space)	Building "A": 725 Square Feet - 4 Parking Spaces Building "B": 1,138 Square Feet - 6 Parking Spaces Gas Pumps: 2 Parking Spaces 12 TOTAL PARKING SPACES (of which 1 must be Handicapped Parking Space)

LEGEND	
	CONCRETE PAVEMENT
	ASPHALT PAVEMENT
D.R.D.C.T.	Deed Records Dallas County, Texas.
M.R.D.C.T.	Map Records Dallas County, Texas.
O.P.R.D.C.T.	Official Property Records Dallas County, Texas.
	FENCE LINE

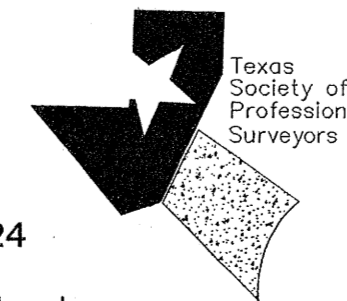
SHEET 1 OF 1



**SURVEYING ASSOCIATES**  
 1018 SOUTH BECKLEY AVE.  
 DALLAS, TEXAS 75203  
FIRM Registration / License No. 10040200



PHONE (214) 948-3324  
 FAX (214) 946-7540  
 Email: Brychlik@SWBell.net



TEXAS SOCIETY OF PROFESSIONAL SURVEYORS

<small>DRAWN BY</small> Lynn L.	<small>JOB NO.</small>
<small>16-188-SUP-L</small>	

Z189-195(JM)