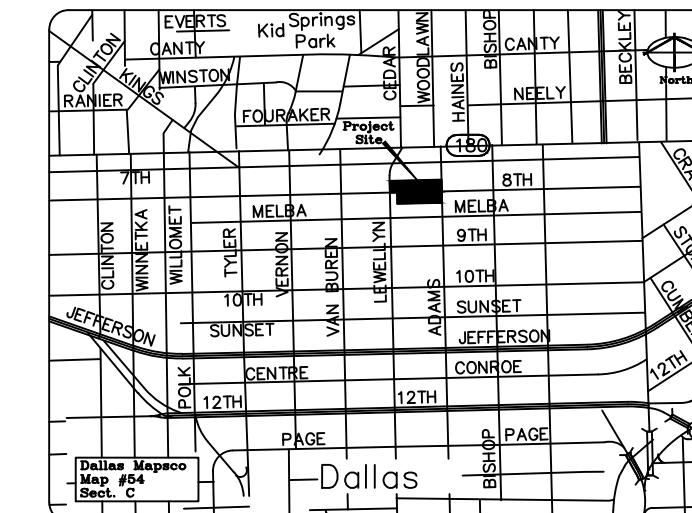
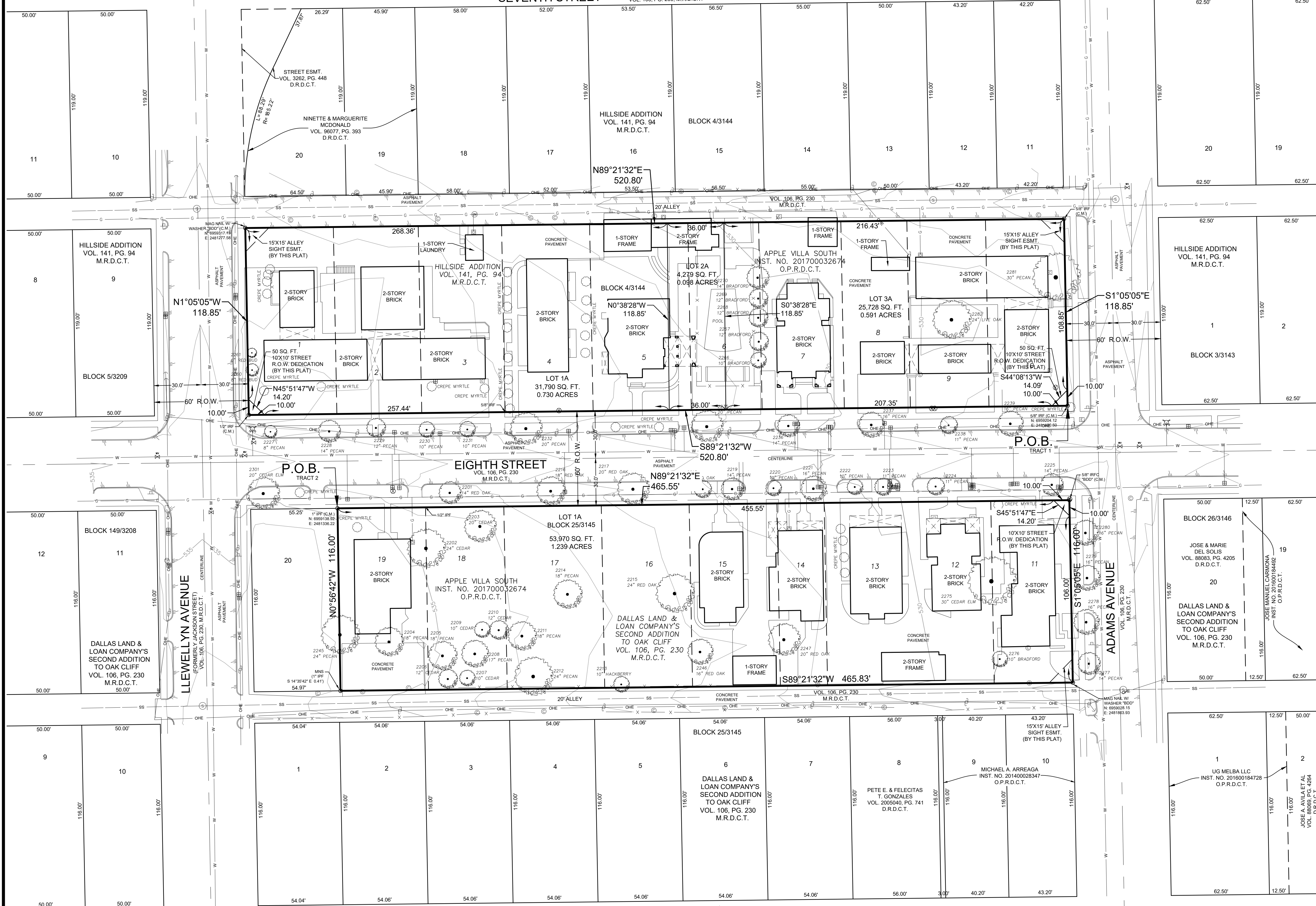
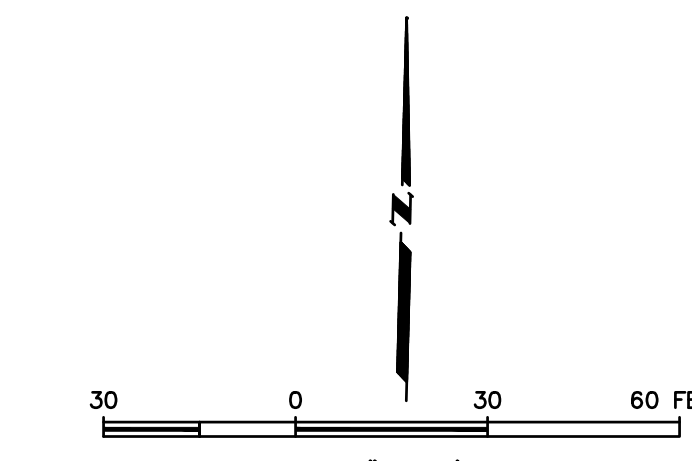


SEVENTH STREET (60' R.O.W.) VOL. 106, PG. 230, M.R.D.C.T.



Vicinity Map NOT TO SCALE



- LEGEND**
- ☐ CABLE PEDESTAL
  - ⊙ CLEAN OUT
  - ⊕ UG ELECTRIC MARKER
  - ⊗ FIRE HYDRANT
  - ⊕ UG GAS MARKER
  - ⊕ GAS MAN HOLE
  - ⊕ GAS METER
  - ⊕ GUY WIRE
  - ⊕ IRRIGATION CONTROL VALVE
  - ⊕ POWER POLE
  - ⊕ SANITARY SEWER MAN HOLE
  - ⊕ SIGN
  - ⊕ TRAFFIC SIGNAL BOX
  - ⊕ TRAFFIC SIGNAL POLE
  - ⊕ WATER METER
  - ⊕ WATER VALVE
  - ⊕ WATER VAULT
  - ⊕ IRF IRON ROD FOUND
  - ⊕ IPF IRON PIPE FOUND
  - ⊕ VOL VOLUME
  - ⊕ PG PAGE
  - ⊕ P.O.B. POINT OF BEGINNING
  - ⊕ OHE OVERHEAD ELECTRIC LINE
  - ⊕ MNS 1/2" IRON ROD W/ 3-1/4" METAL CAP STAMPED "VILLA SOUTH-RPLS 5867" SET
  - ⊕ INST. NO. INSTRUMENT NUMBER (C.M.) CONTROLLING MONUMENT
  - ⊕ R.O.W. RIGHT-OF-WAY
  - ⊕ ESMT. EASEMENT
  - ⊕ D.R.D.C.T. DEED RECORDS, DALLAS COUNTY, TEXAS
  - ⊕ M.R.D.C.T. MAP RECORDS, DALLAS COUNTY, TEXAS
  - ⊕ O.P.R.D.C.T. OFFICIAL PUBLIC RECORDS, DALLAS COUNTY, TEXAS

**PRELIMINARY PLAT**  
**VILLA SOUTH ADDITION**  
**LOTS 1A, 2A & 3A, BLOCK 4/3144 & LOT 1A, BLOCK 25/3145**

A REPLAT OF LOTS 1-10, BLOCK 4/3144 HILLSIDE ADDITION AND LOTS 11-19, BLOCK 25/3145 DALLAS LAND & LOAN COMPANY'S SECOND ADDITION TO OAK CLIFF GEORGE L. LEONARD SURVEY, ABSTRACT NO. 770 CITY OF DALLAS, DALLAS COUNTY, TEXAS CITY PLAN FILE NO. S189-222

**OWNER**  
OAK PROPERTIES LLC  
CONTACT: NORMAN P. BJORNES, JR.  
3550 EAST 46TH STREET, STE. 120  
MINNEAPOLIS, MN 55406  
PH. (612) 874-1102

**ENGINEER**  
BROCKETTE/DAVIS/DRAKE, INC.  
CONTACT:  
4144 N. CENTRAL EXPWY., STE. 1100  
DALLAS, TX 75204  
PH. (214) 824-7064

**SHEET 1 OF 2**  
VOTEX SURVEYING COMPANY - TBPLS FIRM NO. 10013600  
10440 N. CENTRAL EXPWY., STE. 800 DALLAS, TEXAS 75231  
PH. (469) 333-8831; condy@votexsurveying.com  
PROJECT NO. 2019-034