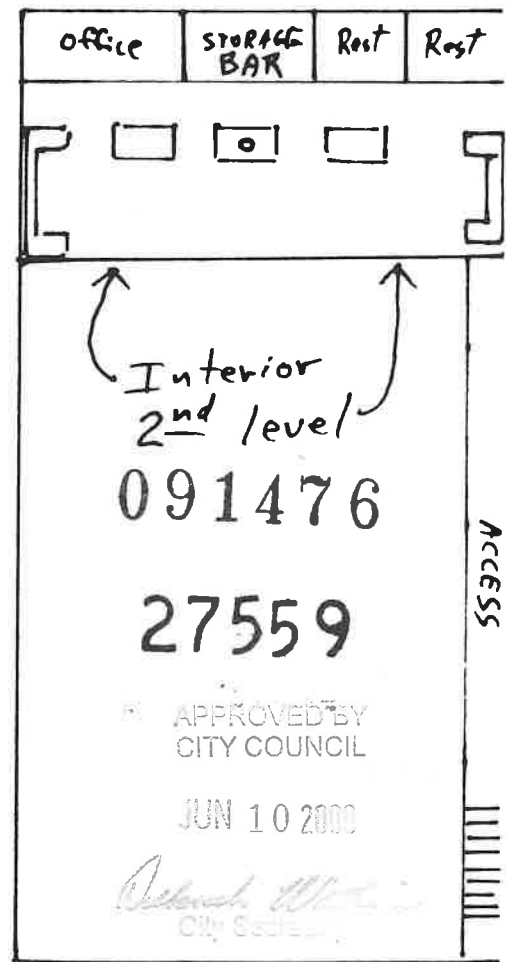
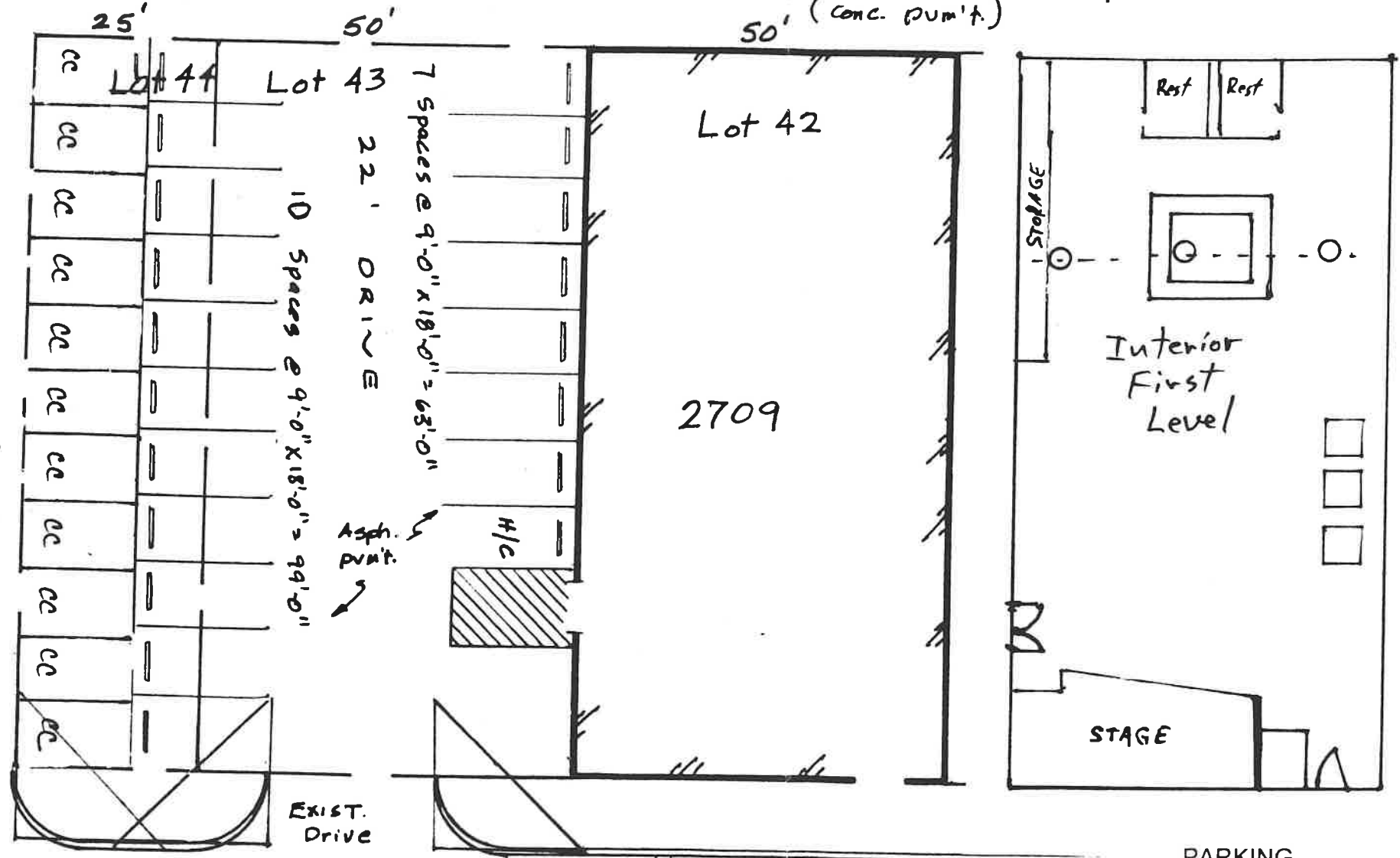


JULY ALLEY
50' (conc. pvm't.)

JULY ALLEY
(conc. pvm't.)

10 Spaces @ 9'0" x 16'0" compact



2709 ELM ST.
Dallas, Texas
75201

SITE PLAN
SCALE 1" = 20'

ELM STREET
(conc. pvm't.)

PARKING

Required: 62
DART Reduction of 10%
Parking within 1/4 mile of DART Station: 6 spaces
Parking Required: 56
Bar use: None for first 2500 SF
1:100 for remaining SF
Parking Required: 31

On site:
Full size: 17
Handicap: 1
Compact: 10
TOTAL: 28
Street: 3
Parking Required: 31
Parking Provided: 31

Approved
City Plan Commission
May 7, 2009

Specific Use Permit
No. 1757

SITE PLAN

Sheet 1

Z089-181