

TREE TABLE			
601	13.25" Box Elder, multi	672	15.75" Mesquite, multi
602	9" Box Elder	673	11.75" Mesquite, multi
603	13.25" Box Elder, multi	674	11" Mesquite, multi
604	11" Box Elder, multi	675	9.25" Mesquite, multi
605	9" Box Elder	676	9.5" Mesquite, multi
606	17.75" Box Elder, multi	677	10.5" American Elm
607	9.75" American Elm, multi	678	18" American Elm
608	9" Box Elder	679	22" American Elm
609	8" Box Elder	680	9.5" American Elm
610	14" Box Elder	681	8.5" Hackberry
611	13" Hackberry	682	9" Hackberry
612	19" Osage Orange, multi	683	8.5" American Elm
613	9" Hackberry	684	11" Hackberry
614	9" Hackberry, multi	685	9" Eastern Red Cedar, multi
615	10.5" Box Elder	686	13" Eastern Red Cedar, multi
616	18" Hackberry	687	14" Hackberry
617	16" Hackberry	688	8.5" Eastern Red Cedar
618	10.5" Eastern Red Cedar, multi	689	9.5" Eastern Red Cedar
619	12" Eastern Red Cedar, multi	690	10" Hackberry
620	9.5" Hackberry	691	8" Hackberry
621	19" Eastern Red Cedar, multi	692	8" Hackberry
622	9.5" Hercules Club, multi	693	12" Hackberry
623	10.5" Hackberry, multi	694	20" American Elm
624	14" Hackberry	695	11" American Elm
625	8" Hackberry	696	9" American Elm
626	19" Hackberry, multi	697	14" American Elm
627	9" Eastern Red Cedar	698	8.5" American Elm, multi
628	10.5" Hackberry	699	8.75" American Elm, multi
629	10.5" Hackberry	700	9" American Elm
630	12" Eastern Red Cedar	701	17.75" Mulberry, multi
631	8" Hackberry	702	11.5" American Elm
632	15" Eastern Red Cedar	703	9.5" Ash
633	13.5" Hackberry, multi	704	13.25" American Elm, multi
634	9.5" Eastern Red Cedar	705	12" American Elm, multi
635	14" Eastern Red Cedar	706	9.5" Hackberry
636	9" Hackberry, multi	708	15" American Elm, multi
637	9" Eastern Red Cedar	709	9.5" American Elm
638	8" Hackberry	710	10.5" Eastern Red Cedar
639	10" Eastern Red Cedar, multi	711	18.25" Mulberry, multi
640	17" Hackberry	712	12.25" Box Elder, multi
641	8" Hackberry	713	9.5" Hackberry, multi
642	13.5" Hackberry, multi	714	9" Box Elder
643	13" Hackberry, multi	715	28" American Elm
644	8" Hackberry	716	10" Hackberry
645	9.5" Hackberry	717	8" Hackberry
646	21.5" Hackberry, multi	718	20" Hackberry
647	8.5" Hackberry, multi	719	20" Hackberry
648	13" Hackberry, multi	720	25" American Elm
649	12" Hackberry, multi	721	22" Pecan
650	9" Mulberry	722	27.5" Unknown
651	18" Hackberry	723	9.5" Pecan
652	14.5" Box Elder, multi	724	30" Unknown
653	16" Hackberry	725	31.5" Unknown
654	9.5" Hackberry, multi	726	18.5" Eastern Red Cedar
655	12" Hackberry, multi	727	15" Pecan
656	12" Hackberry, multi	728	16" Hackberry
657	10" Hackberry	729	16.5" Hackberry
658	9" Hackberry	730	17" Eastern Red Cedar
659	8.5" Hackberry	731	10.5" Box Elder
660	8" Hackberry	732	23" Unknown
661	16.5" Hackberry, multi	733	18" Box Elder
662	11" Hackberry, multi	734	18" Box Elder
663	16.5" Hackberry, multi	735	14.5" Hackberry, multi
664	10" Box Elder, multi	736	12" Unknown, multi
665	8.5" Hackberry	737	14.5" Unknown, multi
666	11" Hackberry	738	21" Box Elder
667	36.5" Osage Orange, multi	739	19" Box Elder
668	12" Box Elder	740	17" Box Elder
669	14.5" Black Willow, multi	741	22" Unknown
670	9" Black Willow, multi	742	26.75" Unknown, multi
671	15.25" Mesquite, multi	743	9" Cottonwood

R = EXISTING TREE TO BE REMOVED

PROTECTED TREES DEFINITIONS

SIGNIFICANT TREE means a protected healthy tree whose age, size, unique type, or natural or historical character are of special importance to the city, and meets the following species and size requirements:

(A) Post oaks with a minimum diameter of 12 inches.

(B) Trees of the following species having a minimum 24-inch diameter: American elm, bois d'arc, cedar elm, chittamwood, common persimmon, eastern red cedar, green ash, all other oaks, pecan, all walnut species, and white ash.

CLASS 1 TREE means a tree located in a primary natural area or a geologically similar area within 50 feet above the escarpment zone.

CLASS 2 TREE means a tree that is not otherwise classified as a Class 1 tree or Class 3 tree.

CLASS 3 TREE means Arizona ash, black willow, cottonwood, hackberry, honeylocust, mesquite, mimosa, mulberry, ornamentals, pinus spp., Siberian elm, silver maple, sugarberry, or a small tree.

REPLACEMENT TREE CALCULATIONS

Except as provided in this section, the minimum total caliper of replacement trees must equal or exceed the total classified diameter inches of the protected trees removed or seriously injured as listed below.

Tree classification for mitigation:
 Historic Trees: 3:1
 Significant Trees: 1.5:1
 Class 1: 1:1
 Class 2: 0.7:1
 Class 3: 0.4:1

Significant Trees (1.5:1)	Class 1 (1:1)	Class 2 (0.7:1)	Class 3 (0.4:1)
28 INCHES	0 INCHES	628.5	595.75

REPLACEMENT TREE CALCULATIONS

603.75 TOTAL INCHES OF PROTECTED TREES SURVEYED

441 INCHES PRESERVED

Significant Trees Removed: 28 inches x 1.5 = 42 inches

Class 1 Trees Removed: 0 inches x 1 = 0 inches

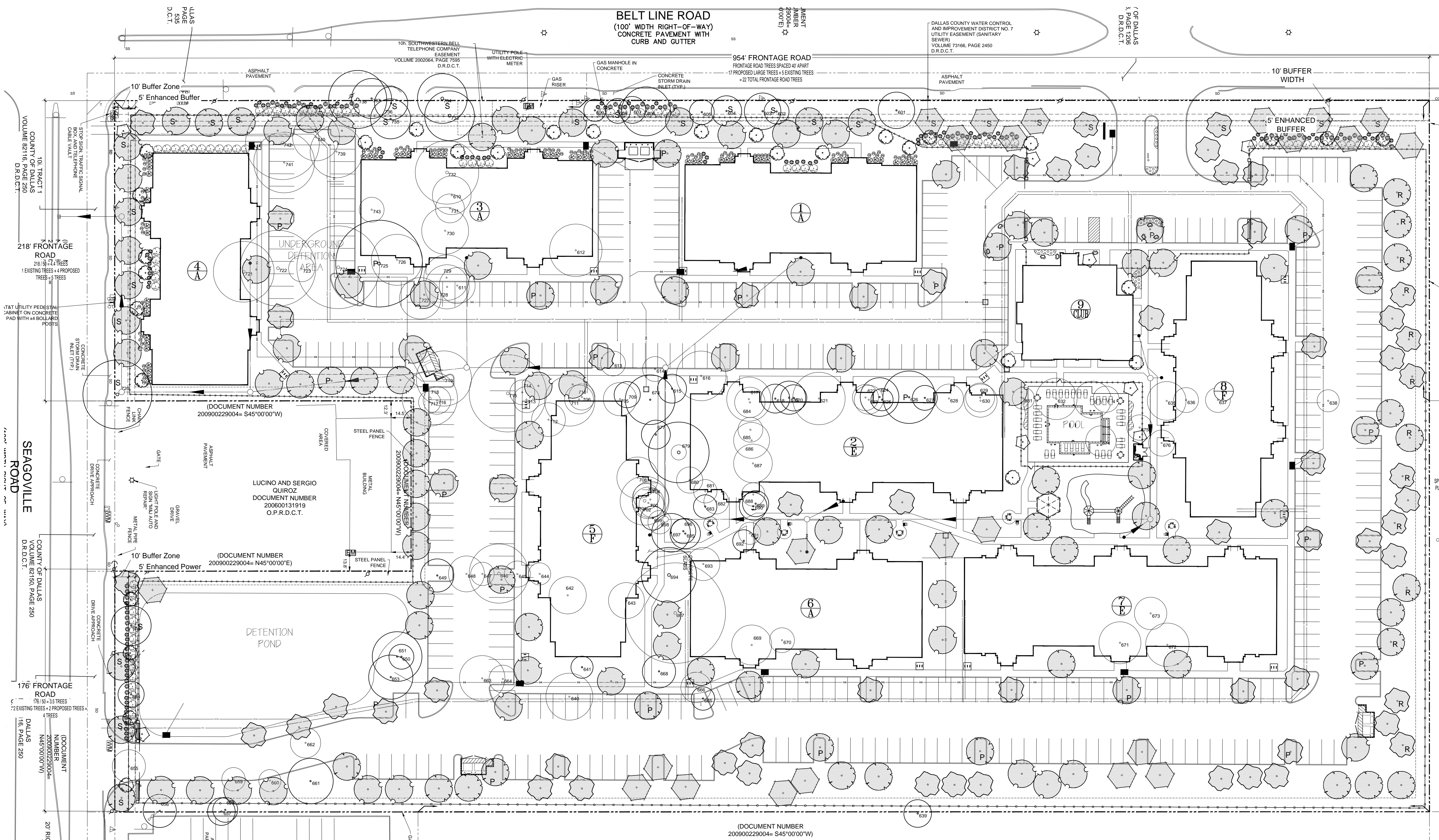
Class 2 Trees Removed: 628.5 inches x .7 = 439.95 inches

Class 3 Trees Removed: 595.75 inches x .4 = 238.3 inches

TOTAL INCHES TO BE MITIGATED = 720.25 inches

720.25 / 3 inch caliper replacement tree = 240.08 Replacement Trees

NUMBER OF REPLACEMENT TREES PROVIDED = 241 TREES

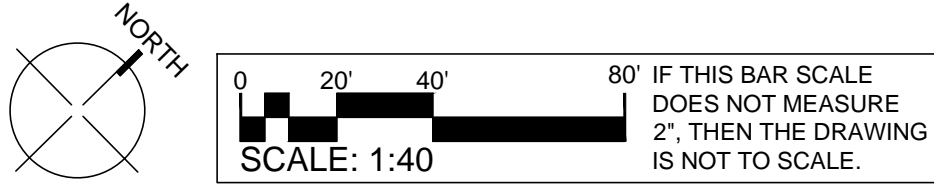


City Landscapē

TREES - SHADE

SYMBOL	QTY.	BOTANICAL NAME COMMON NAME	REMARKS
	64	Quercus virginiana Live Oak 3" Cal. 6' Ht. Min.	Single Trunk, Dark Green, Full Canopy, Matched, B&B
	58	Fraxinus texensis Texas Ash 3" Cal. 6' Ht. Min.	Single Trunk, Dark Green, Full Canopy, Matched, B&B
	65	Quercus shumardi Shumard Oak 3" Cal. 6' Ht. Min.	Single Trunk, Dark Green, Full Canopy, Matched, B&B
	23	Ulmus crassifolia Cedar Elm 5" Cal. 8'-10' Ht. (Min.)	Single Trunk, Dark Green, Full Canopy, Matched, B&B
	31	Ilex vomitoria Yaupon Holly 3" Cal. 6'	Multi-trunk, 3 Canes, Dark Green, Full Canopy, Matched, B&B
	29	Jasminum humile Italian Jasmine 3 OR 5 Gal.	Full, Healthy, Bright Green Plant as Shown
	64	Salvia regia Mountain Sage 3 Gal.	Full, Healthy, Grey Green Plant as Shown
	91	Mulberbergia capillaris Gulf Mully 3 Gal.	Full, Healthy, Bright Green, Plant as shown
	29	Salvia greggii Autumn Sage 3 Gal.	Full, Healthy, Bright Green, Plant as shown

CITY REQUIRED TREE REPLACEMENT PLAN



DRAWN BY: JMB
 CHECKED BY: JMK
 PROJECT #:
 REGISTERED ARCHITECT
 STATE OF TEXAS
 8/14/2020 EXP: 11/30/2020
 LDG
 KELLY GROSSMAN
 ARCHITECTURE - LANDSCAPE DESIGN - CONSTRUCTION ADMINISTRATION
 290 ANDRE HOFF ROAD, SUITE 210, AUSTIN, TEXAS 78746 PH: +1 (512) 227-3207
 www.kellygrossmanarchitect.com
 Copyright
 MEADOWBROOK SEAGOVILLE, TX
 ISSUED FOR PERMIT
 ISSUED FOR BID
 ISSUED FOR CONSTRUCTION
 DWG NAME
 DATE: 8/14/2020
 DESCRIPTION: CITY LANDSCAPE PLAN
 SHEET