

FARRELL architects
david@farrellarchitects.com

AFTER8TOEDUCATE

FANNIE C. HARRIS SCHOOL
SCHOOL
4212 EAST GRAND

DATE:
010818

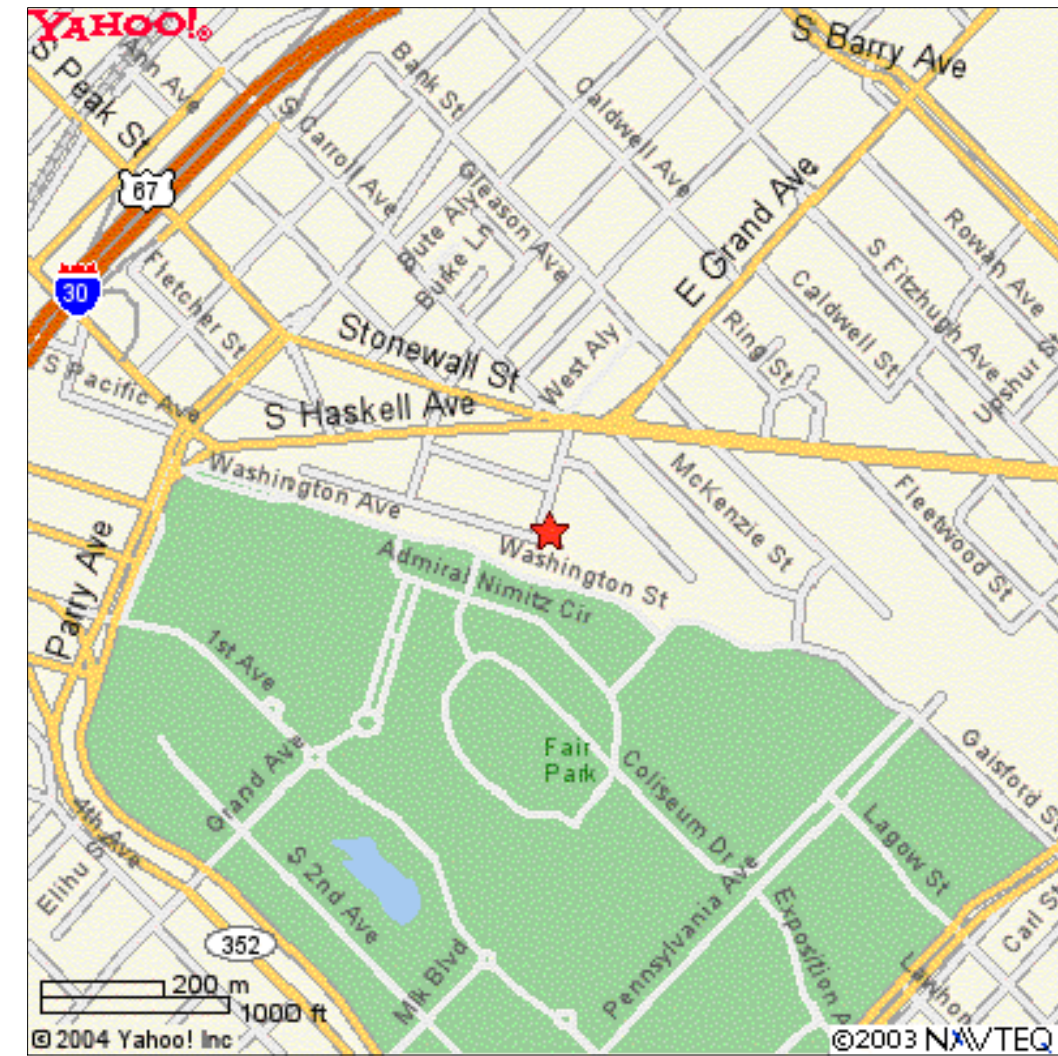
DRAWN BY:

CHECKED BY:

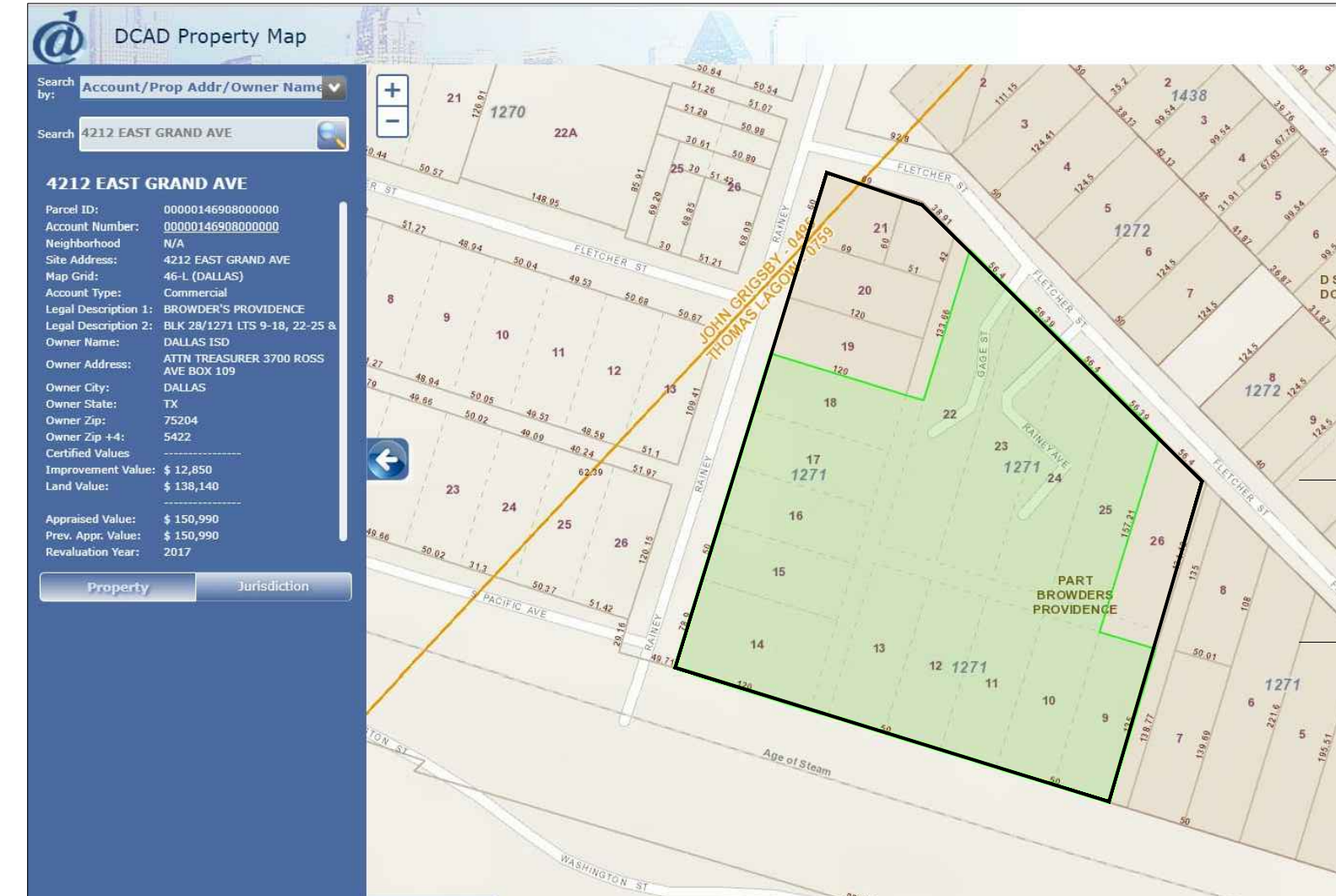
PLAN NUMBER

SHEET NUMBER

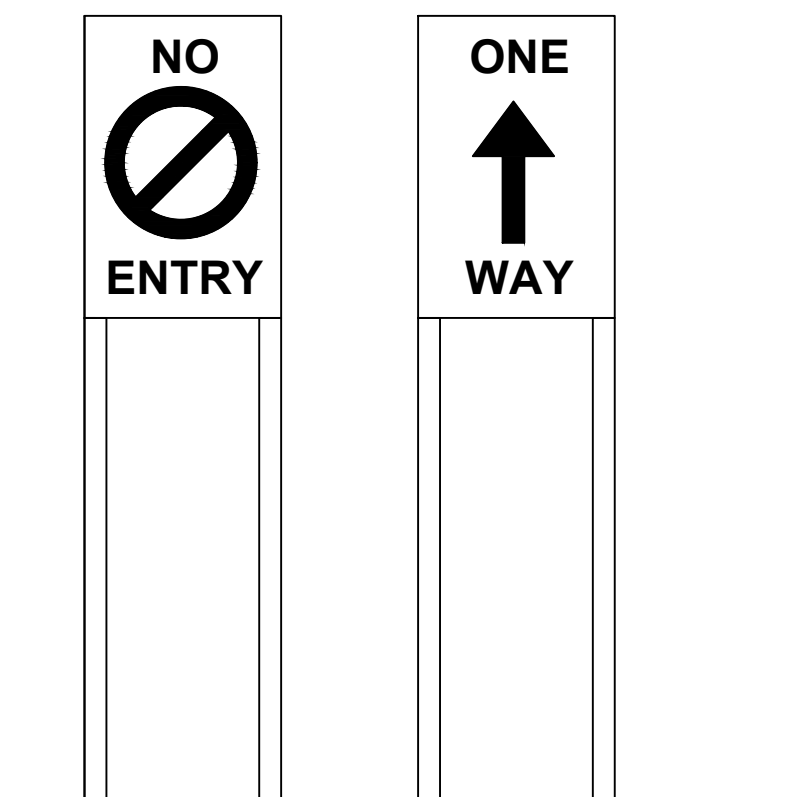
SUP 1



VICINITY MAP



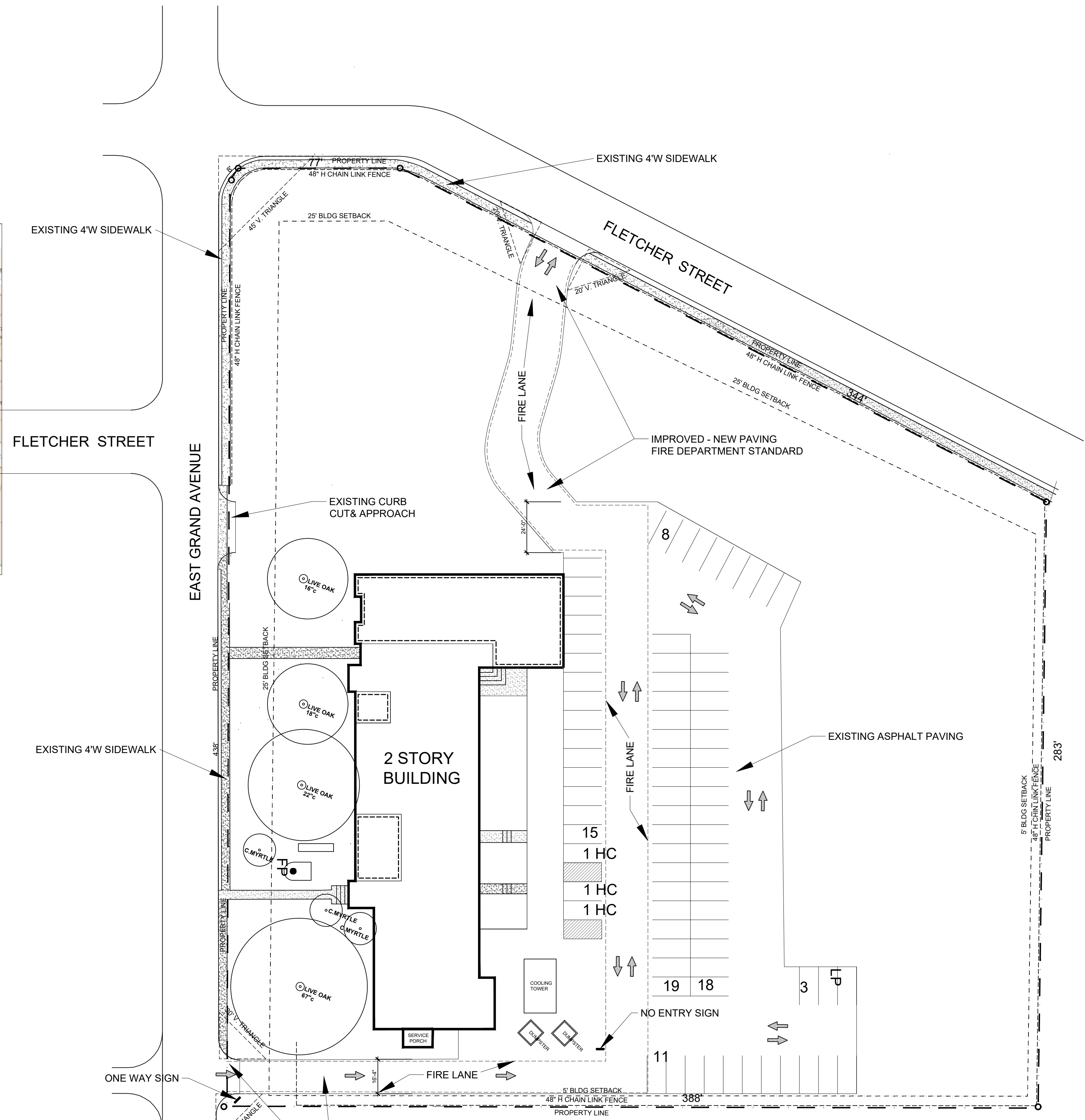
EXISTING PROPERTY INFORMATION



DIRECTIONAL SIGNS

BUILDING LEGEND

SUP AREA (COMMUNITY SERVICE CENTER) GROUND FLOOR ONLY



EXISTING DRIVE - APPROACH - CURB CUT

NOTE:
SITE BOUNDARY AND BUILDING FOOTPRINT DERIVED FROM ARCHIVAL DOCUMENTS AND AERIAL PHOTOGRAPHY.
DETAILED SITE AND BUILDING INFORMATION SUBJECT TO FIELD SURVEY VERIFICATION.

SITE PLAN
SCALE 1"=30'

DEVELOPMENT DATA - COMMUNITY SERVICE CENTER AND GROUP RESIDENTIAL FACILITY

SITE AREA - 148,000 SF, +/- 3.39 AC
TOTAL BLDG. AREA - 25,600 SF
LOT COVERAGE - 9.7%
MAX. BLDG. HEIGHT - 36'
IMPERVIOUS AREA - 55,000 SF (15,000 SF BLDG + 40,400 PAVING) 37%

PARKING REQUIRED -0.25 SPACES PER BED -35 BEDS = 8.75 SPACES
-1 SPACE PER 200 SF OFFICE - 1,295SF = 6.47 SPACES
-1 SPACE PER 200 SF COMMUNITY SER. CNTR. = 24.65 SPACES
TOTAL PARKING REQUIRED = 39.65 SPACES

PARKING SHOWN - 77 SPACES

