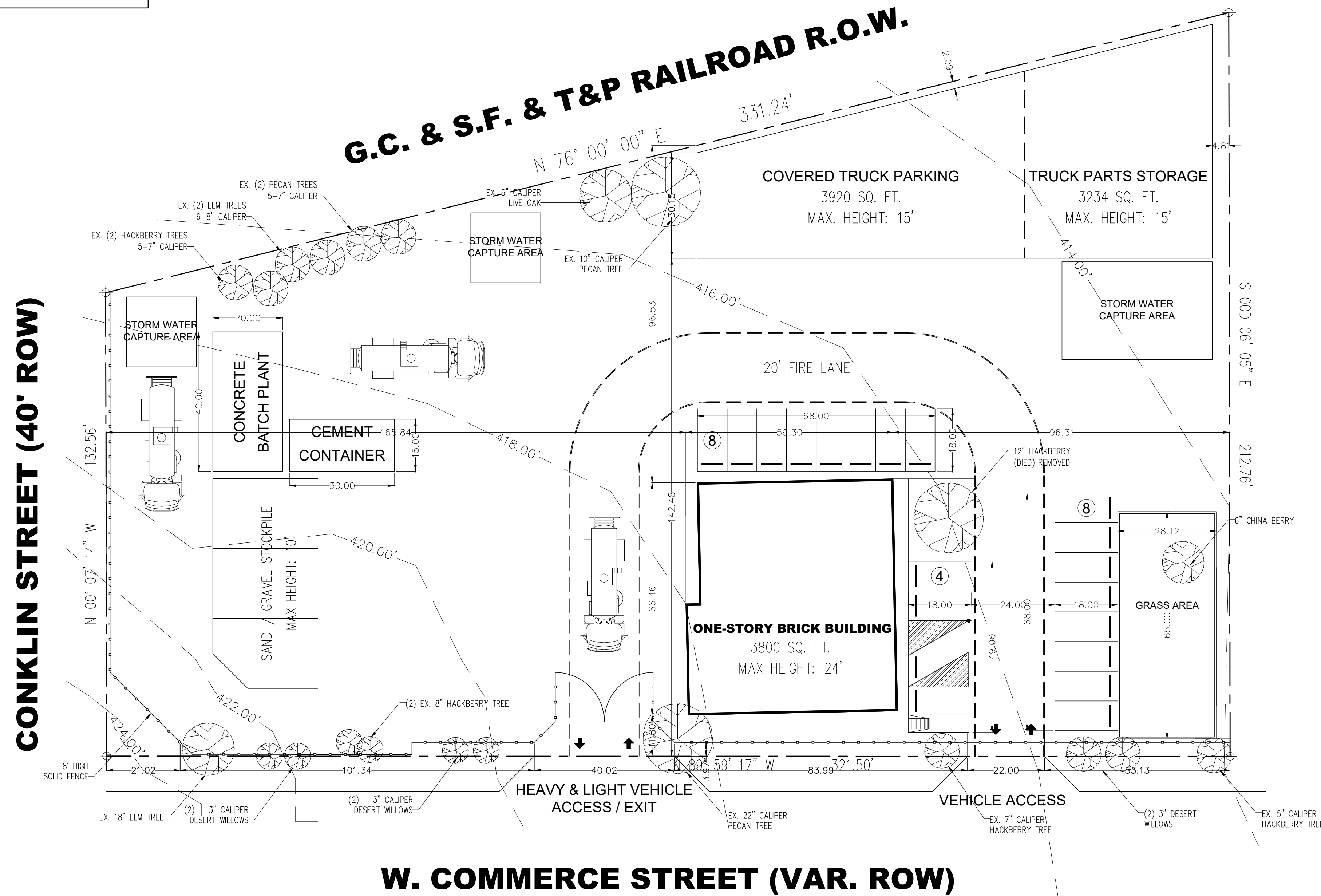
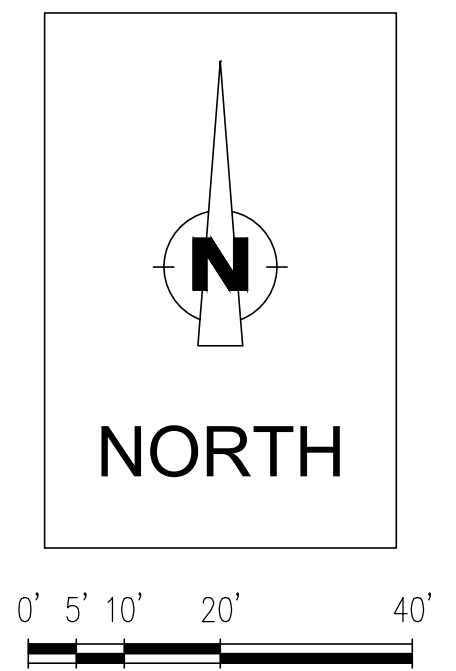
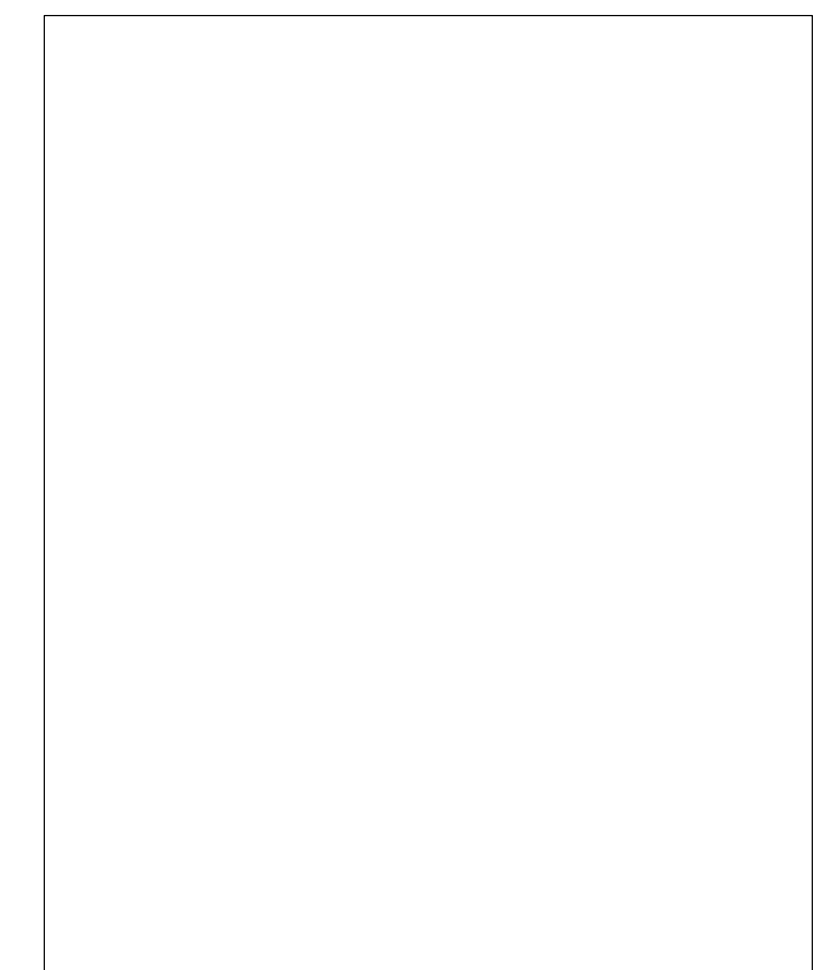


VICINITY MAP  
NOT TO SCALE



**PARKING ANALYSIS**  
 LAND USE: INDUSTRIAL (OUTSIDE) - CONCRETE BATCH PLANT  
 PARKING REQUIRED: 600 / BUILDING & MANUFACTURING AREA  
 TOTAL BUILDING & OUTSIDE MANUFACTURING AREA: 12,204 SQ. FT.  
 PARKING REQ.: 20 SPACES  
 PARKING PROVIDED: 20 SPACES

FLOOR AREA: 7,034 sq. ft.  
 LOT COVERAGE: 19.73%



SITE & LANDSCAPE PLAN (Z189-301)			
1001 W. COMMERCE STREET			
SUP #1752			
DEPARTMENT OF CURRENT PLANNING			
CITY OF DALLAS			
DESIGN BY:	DRAWN BY:	DATE:	SCALE:
ARANDA	ARANDA	SEPTEMBER 10, 2019	1" = 20'