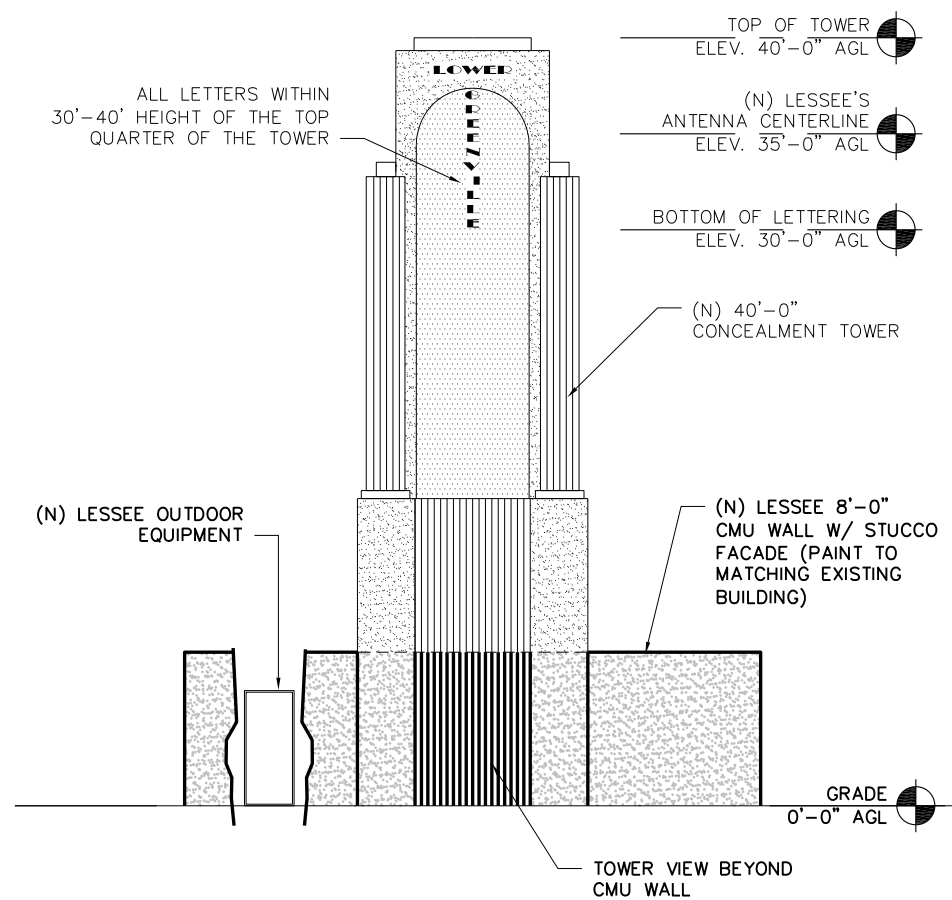
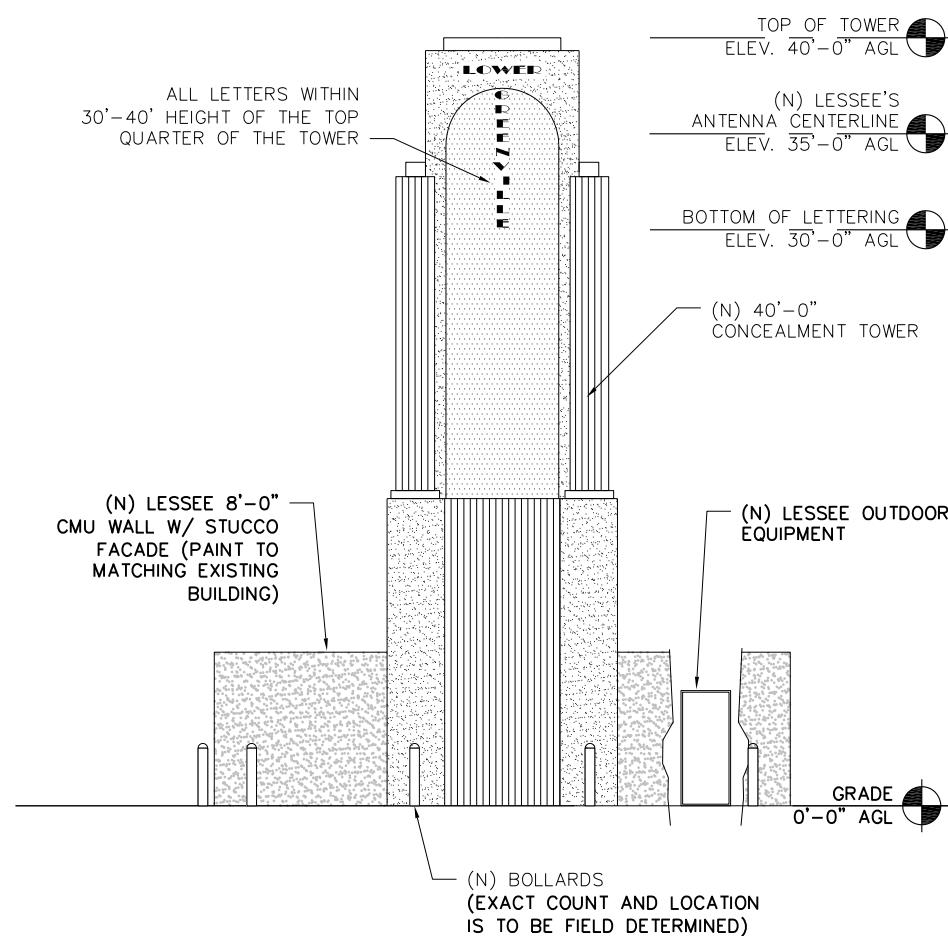


**CALCULATIONS:**  
 LOWER = ±2.7 S.F.  
 GREENVILLE = ±5.7 S.F.  
 FACADE = ±432 S.F.



**1** NORTH (ALLEY VIEW)  
 TOWER ELEVATION  
 SCALE: 1" = 10'-0"



**2** SOUTH (GOODWIN VIEW)  
 TOWER ELEVATION  
 SCALE: 1" = 10'-0"

NO.	DATE	ISSUED FOR REVIEW	REVISION
D	07/05/16	ISSUED FOR REVIEW	
C	06/20/16	ISSUED FOR REVIEW	
B	03/13/15	ISSUED FOR REVIEW	
A	03/09/15	ISSUED FOR REVIEW	

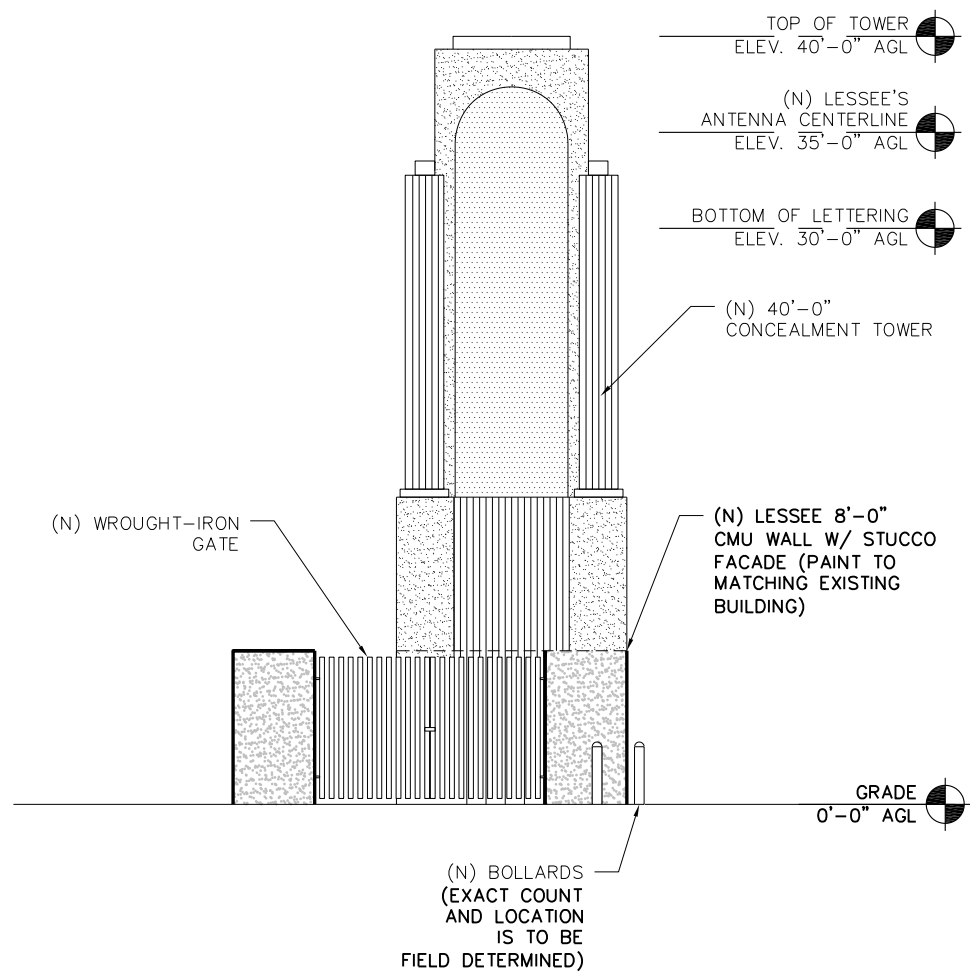
**verizon**  
 1301 SOLANA BLVD BLDG 2 SUITE #2400  
 WESTLAKE, TX 76282

DATE DRAWN: 07/01/16  
 DRAWN BY: J. VOIGT  
 APPROVED BY: J. GEORGE

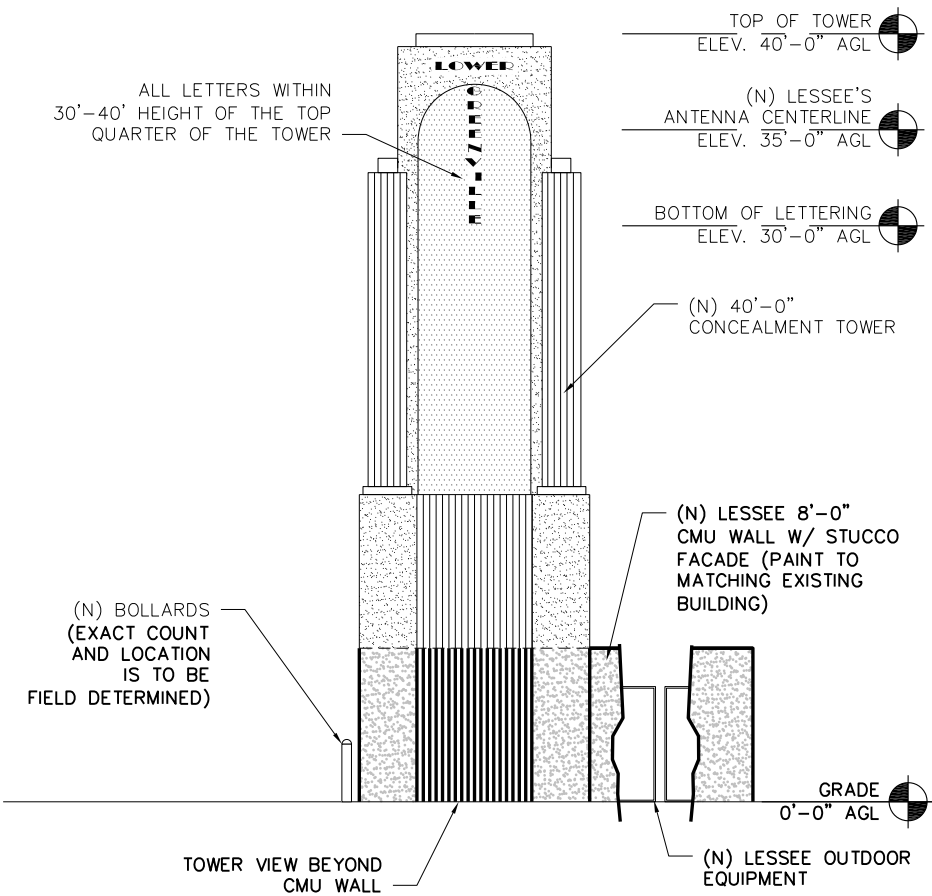
**NEW SITE BUILD**  
**MATILDA GOODWIN**  
 SITE # ID 280580  
 2820 GREENVILLE AVE  
 DALLAS, TX 75206  
 DALLAS COUNTY

**ALLPRO**  
 CONSULTING GROUP, INC.  
 9221 LYNDON B JOHNSON FREEWAY  
 SUITE 204, DALLAS, TX 75243  
 PHONE: 972-231-8893  
 FAX: 972-364-8375  
 WWW.ALLPROCG.COM  
 FIRM REGISTRATION # 6242  
 ACG# 14-4689

SHEET NAME  
**TOWER ELEVATION**  
 CASE NUMBER  
**Z145-145(OTH)**



**1 EAST TOWER ELEVATION**  
SCALE: 1" = 10'-0"



**2 WEST (GREENVILLE VIEW) TOWER ELEVATION**  
SCALE: 1" = 10'-0"

NO.	DATE	ISSUED FOR REVIEW
D	07/05/16	ISSUED FOR REVIEW
C	06/20/16	ISSUED FOR REVIEW
B	03/13/15	ISSUED FOR REVIEW
A	03/09/15	ISSUED FOR REVIEW

**verizon**  
1301 SOLANA BLVD BLDG 2 SUITE #2400  
WESTLAKE, TX 76282

DATE DRAWN: 07/01/16  
DRAWN BY: J. VOIGT  
APPROVED BY: J. GEORGE

**NEW SITE BUILD**  
**MATILDA GOODWIN**  
**SITE # ID 280580**  
2820 GREENVILLE AVE  
DALLAS, TX 75206  
DALLAS COUNTY

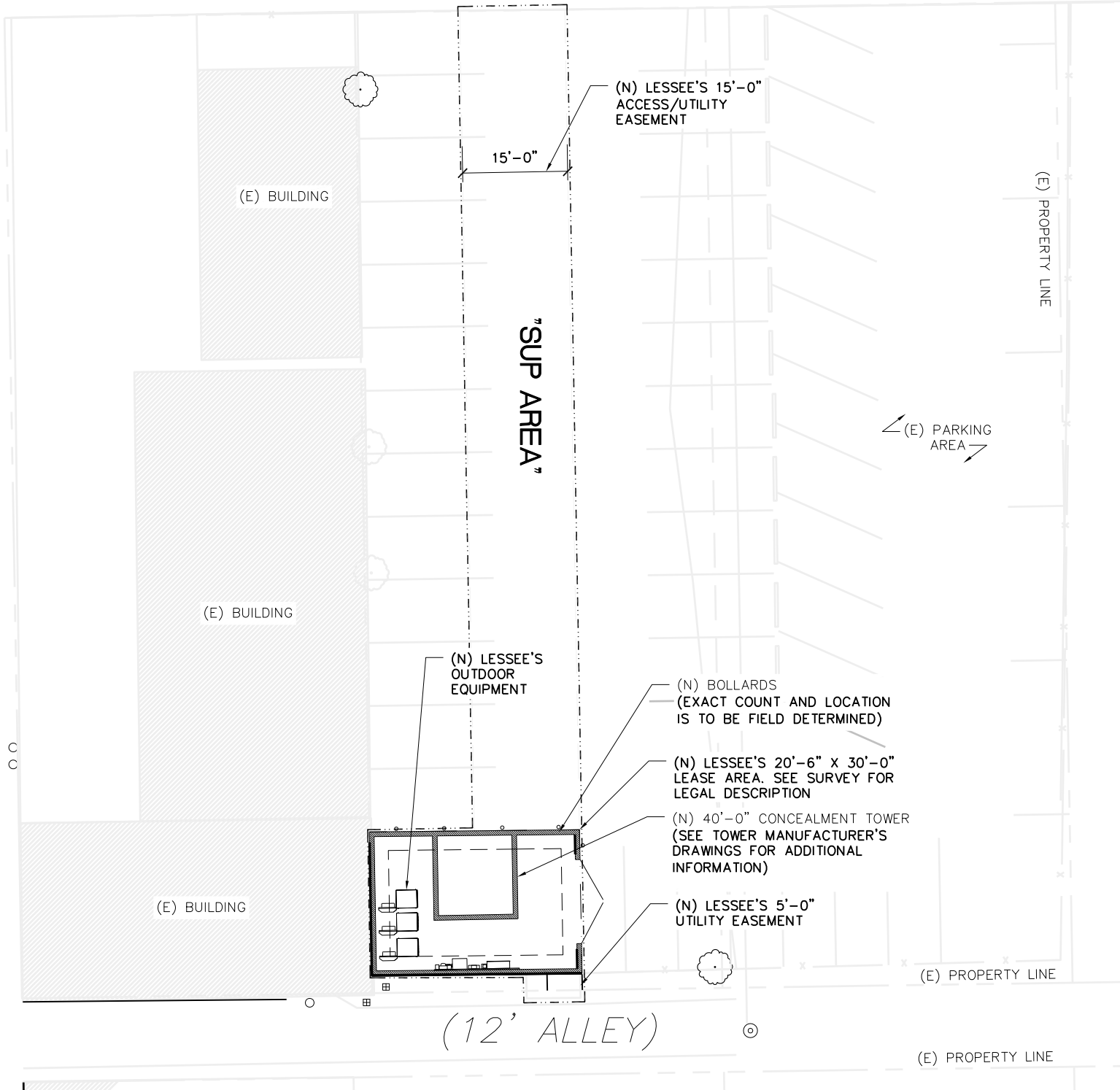
**ALLPRO**  
CONSULTING GROUP, INC.  
9221 LYNDON B JOHNSON FREEWAY  
SUITE 204, DALLAS, TX 75243  
PHONE: 972-231-8893  
FAX: 972-364-8375  
WWW.ALLPROCG.COM  
FIRM REGISTRATION # 6242  
ACGP# 14-4689

SHEET NAME  
**TOWER ELEVATION**  
CASE NUMBER  
**Z145-145(OTH)**

NOTE:  
 ALLPRO CGI SCOPE OF WORK DOES NOT INCLUDE A STRUCTURAL EVALUATION OF THIS TOWER OR STRUCTURE. NEW ANTENNAS & EQUIPMENT SHOWN ON THIS PLAN HAVE NOT BEEN EVALUATED TO VERIFY THE TOWER OR STRUCTURE HAS THE CAPACITY TO ADEQUATELY SUPPORT THESE ANTENNAS & EQUIPMENT. PRIOR TO ANY ANTENNA OR EQUIPMENT INSTALLATION, A STRUCTURAL EVALUATION OF TOWER OR STRUCTURE, INCLUDING ALL MOUNTING SYSTEMS AND HARDWARE, SHOULD BE PERFORMED.

GOODWIN AVENUE  
 (ROW VARIES)

GREENVILLE AVENUE  
 (ROW VARIES)



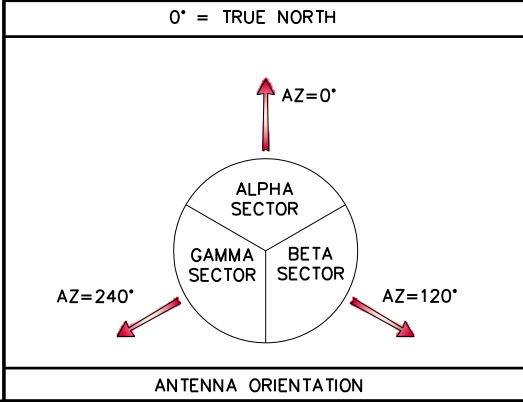
SEE SURVEY FOR LEGAL DESCRIPTION OF LEASE AREA, ACCESS AND UTILITY EASEMENT

NOTE:  
 CONTRACTOR SHALL RESTORE AND REPAIR ANY DAMAGED AREAS CAUSED BY CONSTRUCTION TO ORIGINAL OR BETTER CONDITION

NOTE:  
 DURING CONSTRUCTION CONTRACTOR TO MAINTAIN AN ORANGE FENCE PERIMETER AROUND THE SITE AT ALL TIMES FOLLOWING CLOSE OF EVERY BUSINESS DAY

UTILITY VERIFICATION NOTE:  
 CONTRACTOR SHALL VERIFY ALL EXISTING BURIED AND OVERHEAD UTILITIES PRIOR TO EXCAVATION. CONTRACTOR SHALL REPAIR ALL DAMAGED UTILITIES AT HIS OWN COST AND COORDINATE ANY REPAIRS WITH RESPECTIVE UTILITY COMPANY

NOTE:  
 EXISTING BUILDING TO BE REMOVED FROM THE LEASE AREA



1 OVERALL SITE PLAN  
 SCALE: 1" = 20'-0"



NO.	DATE	REVISION
D	07/05/16	ISSUED FOR REVIEW
C	06/20/16	ISSUED FOR REVIEW
B	03/13/15	ISSUED FOR REVIEW
A	03/09/15	ISSUED FOR REVIEW

1301 SOLANA BLVD BLDG 2 SUITE #2400  
 WESTLAKE, TX 76282

DATE DRAWN: 07/01/16  
 DRAWN BY: J. VOIGT  
 APPROVED BY: J. GEORGE

NEW SITE BUILD  
 MATILDA GOODWIN  
 SITE # ID 280580  
 2820 GREENVILLE AVE  
 DALLAS, TX 75206  
 DALLAS COUNTY

9221 LYNDON B JOHNSON FREEWAY  
 SUITE 204, DALLAS, TX 75243  
 PHONE: 972-231-8883  
 FAX: 972-231-8375  
 WWW.ALLPROCG.COM  
 FIRM REGISTRATION # 6242  
 ACP# 14-4689

SHEET NAME  
 OVERALL SITE PLAN

CASE NUMBER  
 Z145-145(OTH)