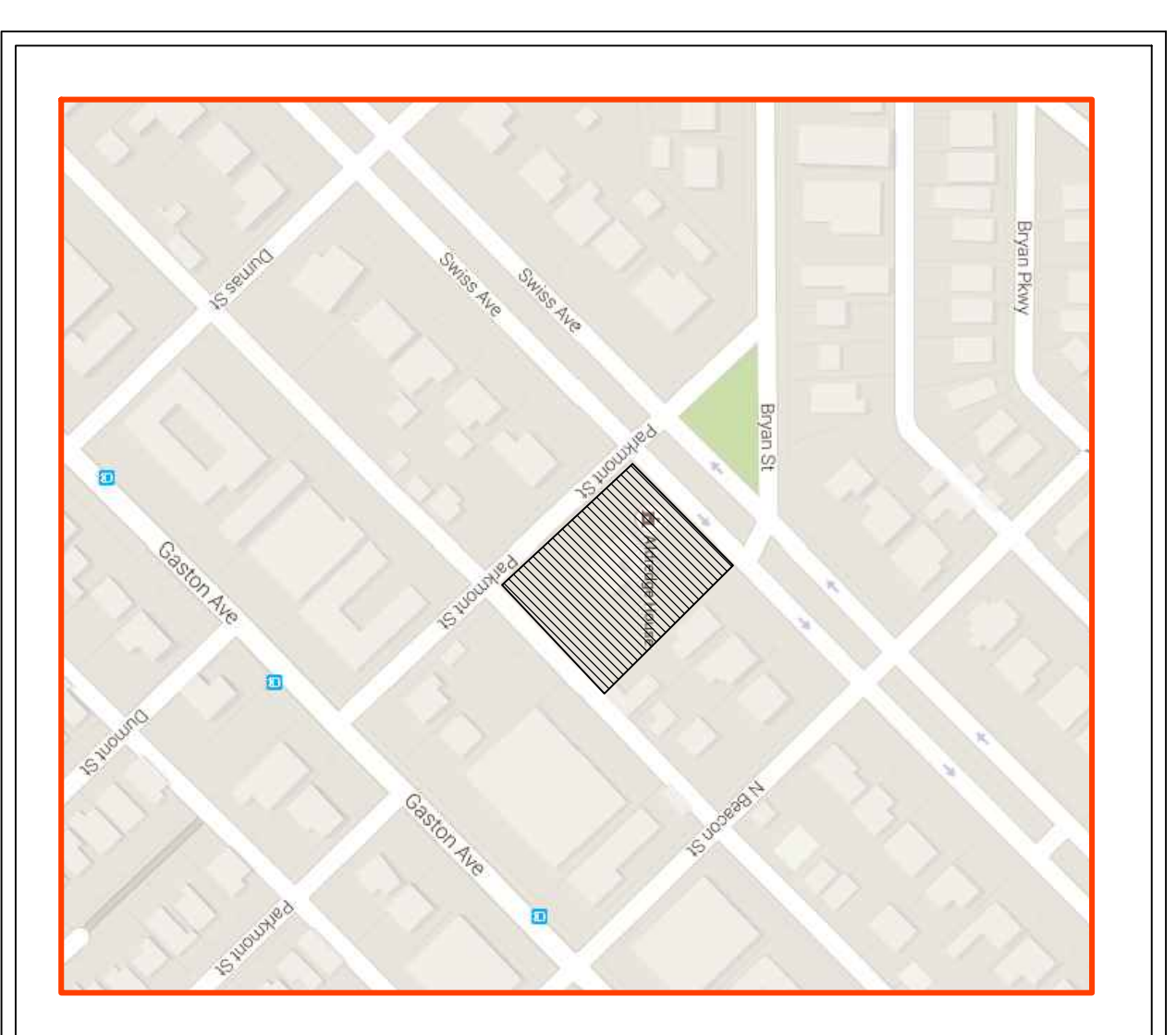
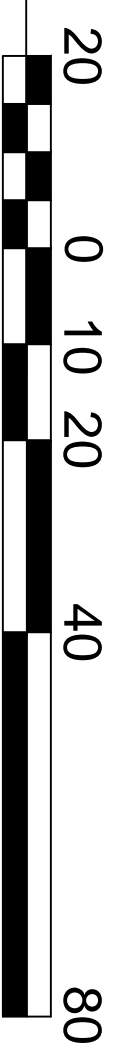
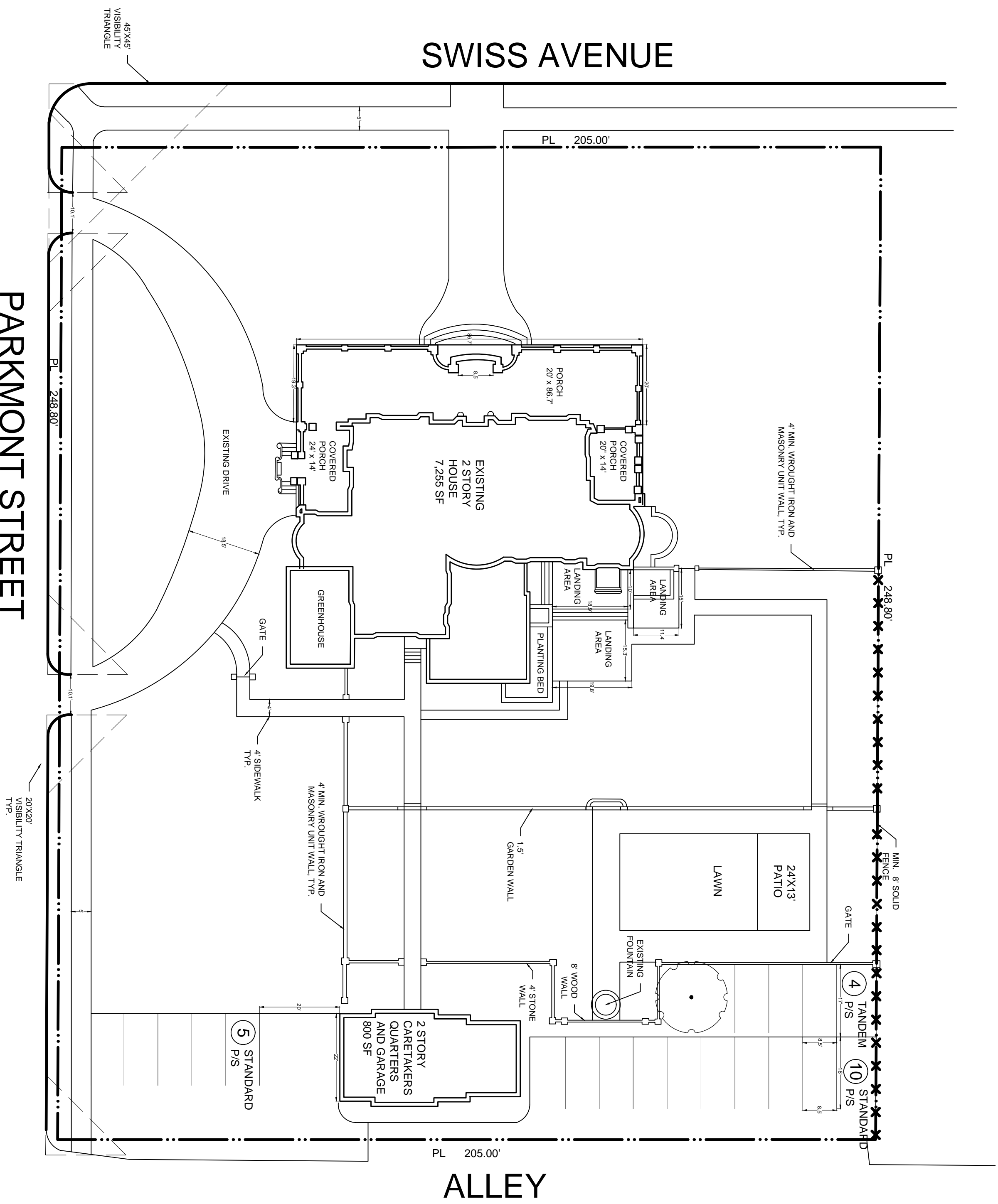




1

ALDREDGE HOUSE SUP SITE PLAN

SCALE: 1" = 20'-0"



VICINITY MAP

NTS



SITE INFORMATION:

USE: DALLAS COUNTY MEDICAL SOCIETY ALLIANCE FOUNDATION ESTABLISHMENT FOR RELIGIOUS, CHARITABLE OR PHILANTHROPIC NATURE.

EXISTING HOUSE: 7,255 SF
 EXISTING CARETAKERS' QUARTERS: 800 SF
 STRUCTURE HEIGHT: 36' TO TOP OF ROOF; 38' TO TOP OF CHIMNEY
 LOT COVERAGE: 14.32%

SETBACKS:
 FRONT YARD: 65'
 REAR YARD: 90'
 ACCESSORY STRUCTURE: 5'
 CORNER SIDE YARD: 15'

PARKING:
 CARETAKERS' PARKING:
 2 GARAGE P/S
 ALDREDGE HOUSE PARKING:
 ON-SITE PARKING:
 15 STANDARD P/S
 4 TANDEM P/S
 OFF-SITE PARKING:
 36 STANDARD P/S
 LOCATED AT 5436 GASTON

TOTAL PARKING REQUIRED: 56
 TOTAL PARKING PROVIDED: 57

CASE NUMBER: Z145-377 (MD/RB)

SITE PLAN

CITY OF DALLAS, TEXAS



BALDWIN ASSOCIATES
 3904 Elm Street, Suite B
 Dallas, Texas 75226
 MOBILE: 214.729.7949
 OFFICE: 214.824.7949
 rob@baldwinplanning.com

01/13/2016
 PROJECT NUMBER
 CASE NUMBER