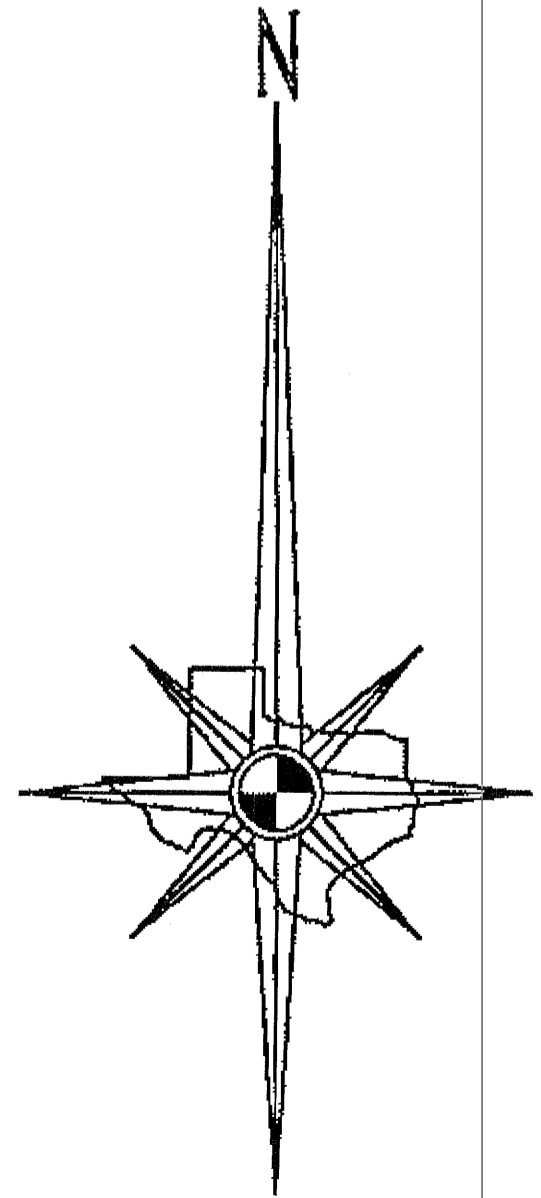
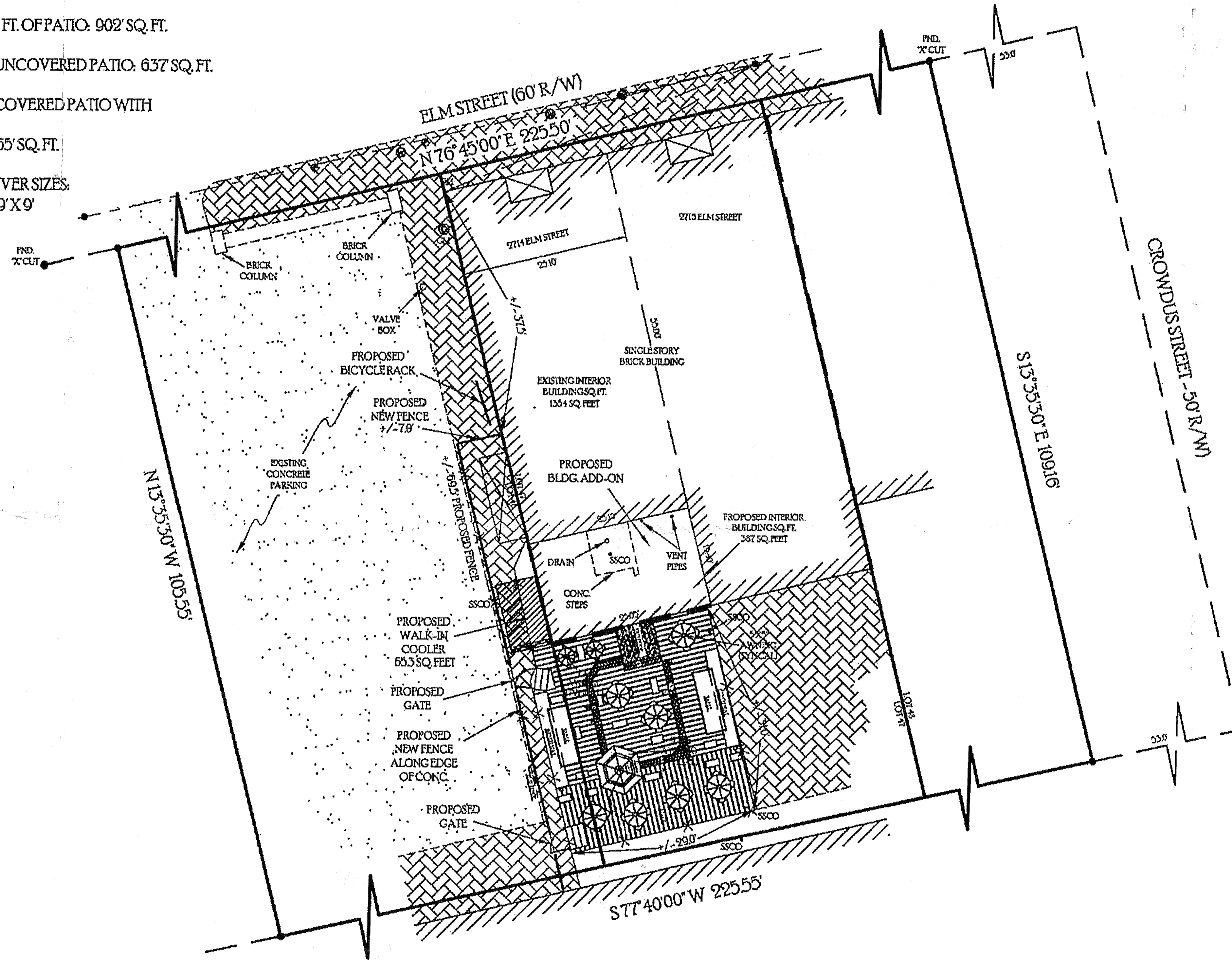


SITE PLAN
 2714 ELM STREET
 FUTURE HOME OF
 "ARMOURY, D.E."

TOTAL SQ. FT. UNDER ROOF: 1741' SQ. FT.
 APPROX. EXISTING INTERIOR SQ. FT.: 1354' SQ. FT.
 APPROX. PROPOSED ADDITION SQ. FT.: 387' SQ. FT.
 APPROX. TOTAL SQ. FT. OF PATIO: 902' SQ. FT.
 APPROX. SQ. FT. OF UNCOVERED PATIO: 637' SQ. FT.
 APPROX. SQ. FT. OF COVERED PATIO WITH
 NON-PERMEABLE
 VINYL AWNINGS: 265' SQ. FT.

VINYL AWNING COVER SIZES:
 (2) 4' X 4'; (7) 5' X 5'; (1) 9' X 9'

LEGEND	
PM	PARKING METER
PP	POWER POLE
WM	WATER METER
GM	GAS METER
EM	ELEC. METER
SSCO	SANITARY SEWER CLEAN OUT
---	PROPERTY BOUNDARY LINE
---	TRACT LINE
---	OVERHEAD POWER LINE
---	BUILDING
---	PAVEMENT
---	CONCRETE
---	PROPOSED IMPROVEMENTS



DRAWING SCALE
 1" = 20'

CARTER SURVEYING & MAPPING, INC.

110 A PALO PINTO STREET - WEATHERFORD, TEXAS
 (P) 817-594-0400 - (F) 817-594-0403

CASE #Z134-224(OTH)

Z167-154