

Landscape Calculations

Land use: Parking
 Total Site Area: 69,399.50 SF
 Landscape Area: 17,240.80 SF
LANDSCAPE REQUIREMENTS:

Site Trees (1/4,000 SF)
 Required **17.34** Provided **50**

Required Street Trees (1/50 LF)
 Culver Frontage: 322.04 LF* **9** **10**
 Beeman Frontage: 85.77 LF* **1.71** **3**

Parking Lot Trees:

11

Design Standards:

Enhanced Perimeter Buffer (15' Buffer):

- (1) Large Canopy & (1) Large Non-Canopy
 - (2) Large Non-Canopy/50 LF
- Screening offstreet parking
 Evergreen shrubs 3' ht.

Provided

26
12
12

Pedestrian Facilities: 5,121 SF

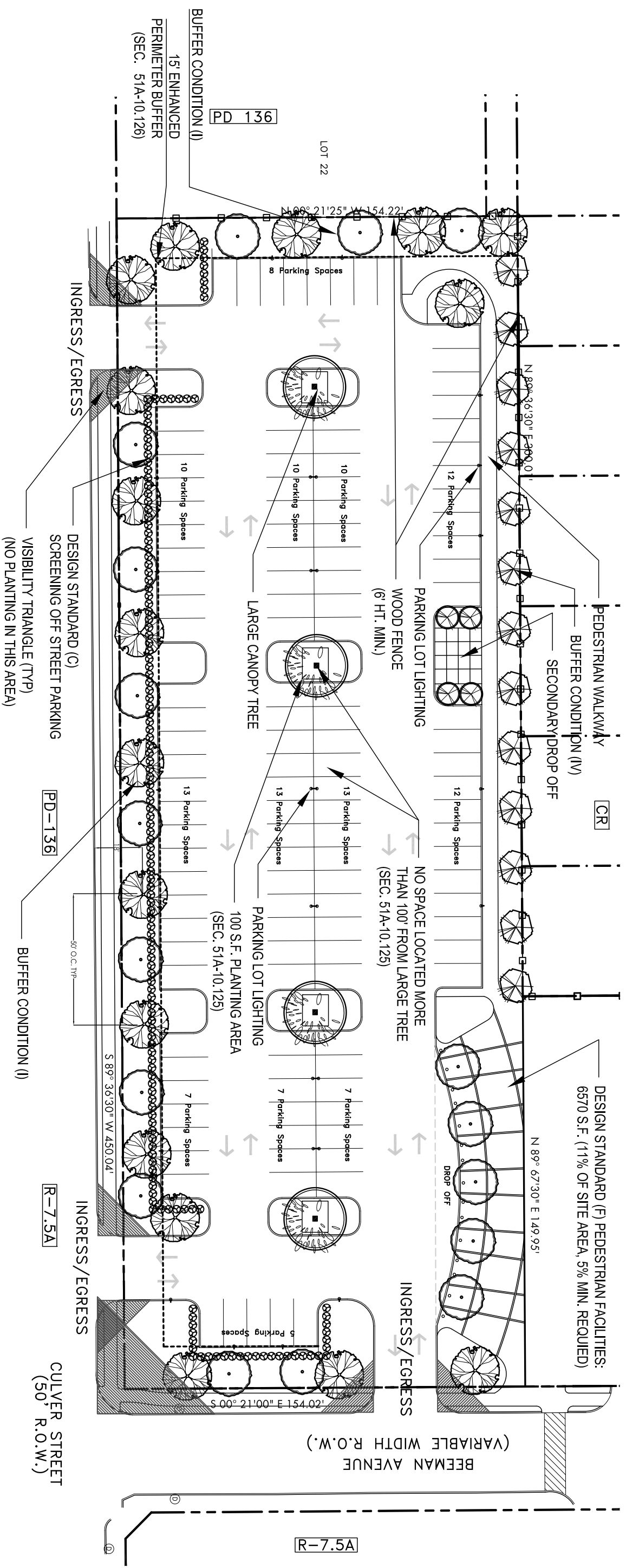
- Primary Drop off plaza: 2,296 SF (3.30%)
- Secondary Drop off area: 505 SF (0.72%)
- Pedestrian walkway: 2,320 SF (3.34%)

Provided

5%
7.36%

* less access drives and visibility triangles

PERIMETER		PLANT		SIZE	HEIGHT	SPREAD	SPACING
PLANT QUANTITY	SYMBOL	COMMON NAME	BOTANICAL NAME	MIN.	MIN.	MIN.	MIN.
CANOPY TREES							
17		SHUMARD RED OAK	Quercus shumardii	3"	15'-16'	6'-7'	AS SHOWN
4		BUR OAK	Quercus macrocarpa	3"	12'	5-6'	AS SHOWN
12		TEXAS ASH	Fraxinus texensis	3"	10-12'	5-6'	AS SHOWN
ORNAMENTAL TREES AND EVERGREENS							
13		EASTERN RED CEDAR	Juniperus virginiana	3"	8-10'	5-6'	AS SHOWN
4		GRAPE MYRTLE "WATERMELON RED"	Lagotisemia indica	2"	6-8'	4-5'	AS SHOWN
SHRUBS							
156		DWARF BURFORD HOLLY	Ilex cornuta x hirtifolii	5	3'	30"	3' O.C.

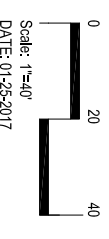


St. Luke's Campus

Parking Lot Layout with 15' Buffer

Dallas, Texas

PARKING SUMMARY
 127 PARKING SPACES



2001 North Lamar Street Suite 100
 Dallas, TX 75202
 214.571.0288
 FAX 214.871.1807