

**FOR
INFORMATION
ONLY**

**INDUSTRIAL
BUN 856107**



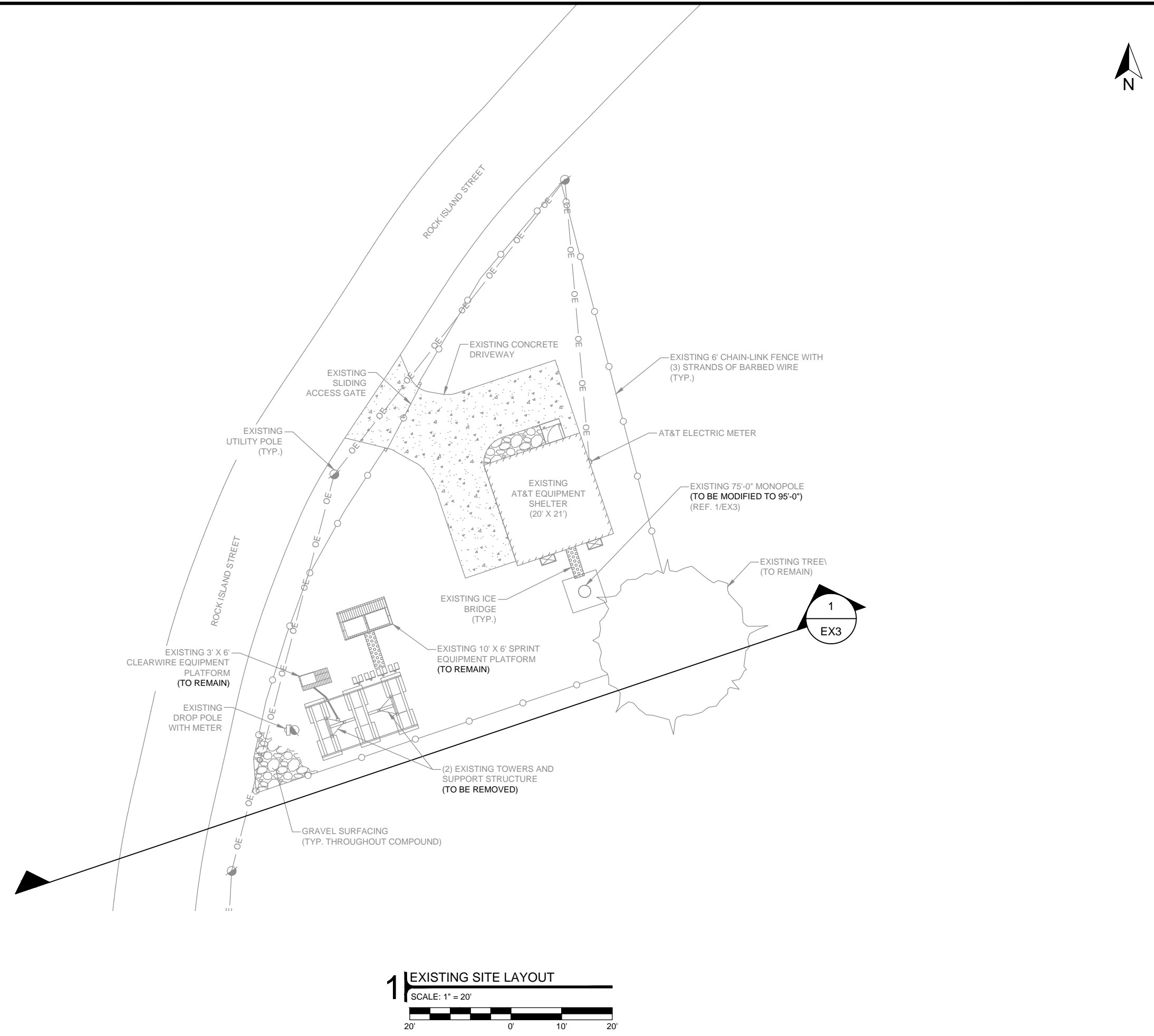
SET ISSUED FOR REVIEW DATE 12/12/16

REVISIONS		
NO.	DATE	DESCRIPTION

DRAWN BY HAH REVIEWED BY DBS

**EXISTING PLAN
EXHIBIT**

EX1



1 EXISTING SITE LAYOUT
SCALE: 1" = 20'

1
EX3

**FOR
INFORMATION
ONLY**

**INDUSTRIAL
BUN 856107**



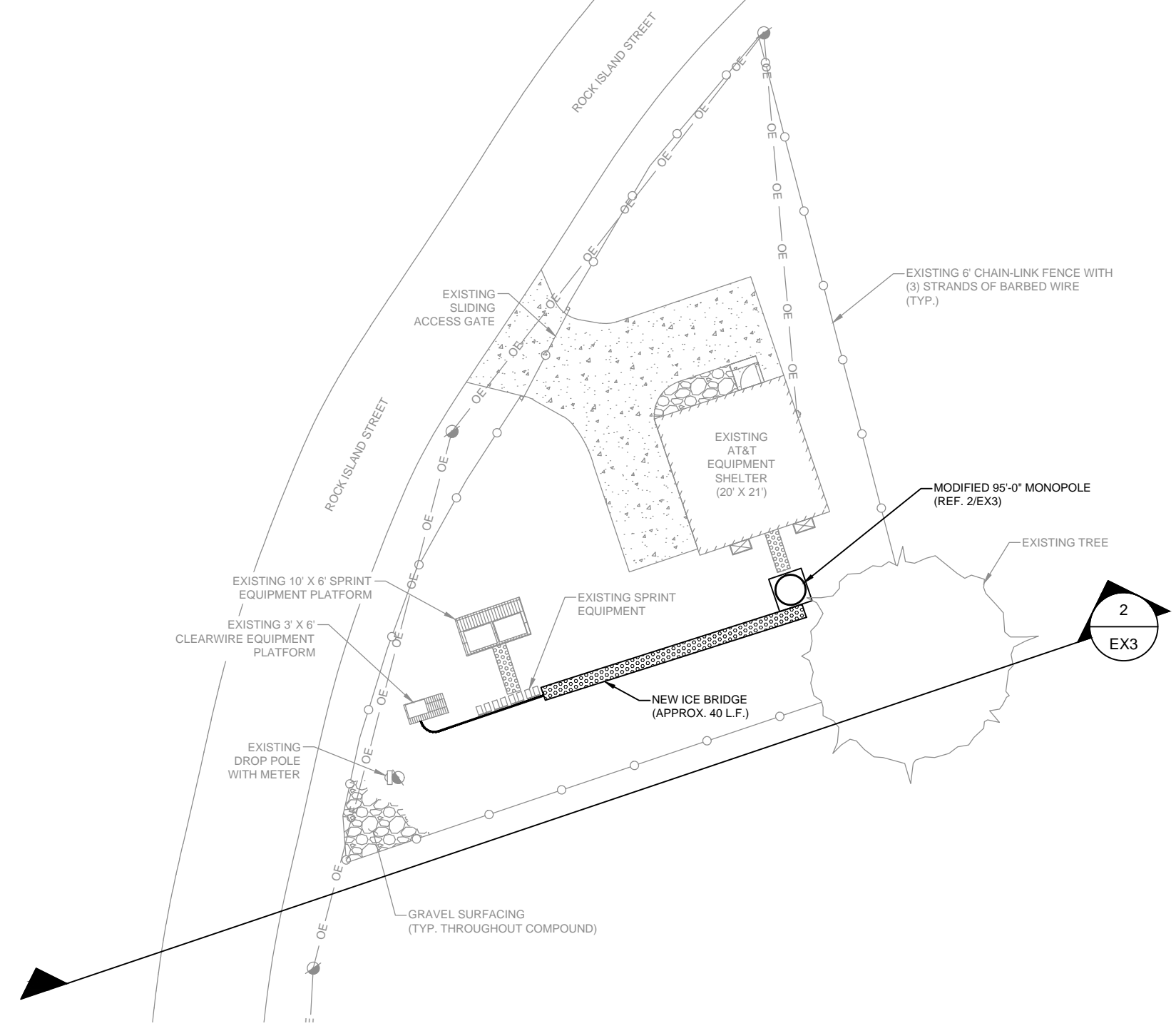
SET ISSUED FOR REVIEW DATE 12/12/16

REVISIONS		
NO.	DATE	DESCRIPTION

DRAWN BY HAH REVIEWED BY DBS

**NEW PLAN
EXHIBIT**

EX2



**FOR
INFORMATION
ONLY**

**INDUSTRIAL
BUN 856107**

**CROWN
CASTLE**

ENERTECH
RESOURCES
TEXAS FIRM F-15232

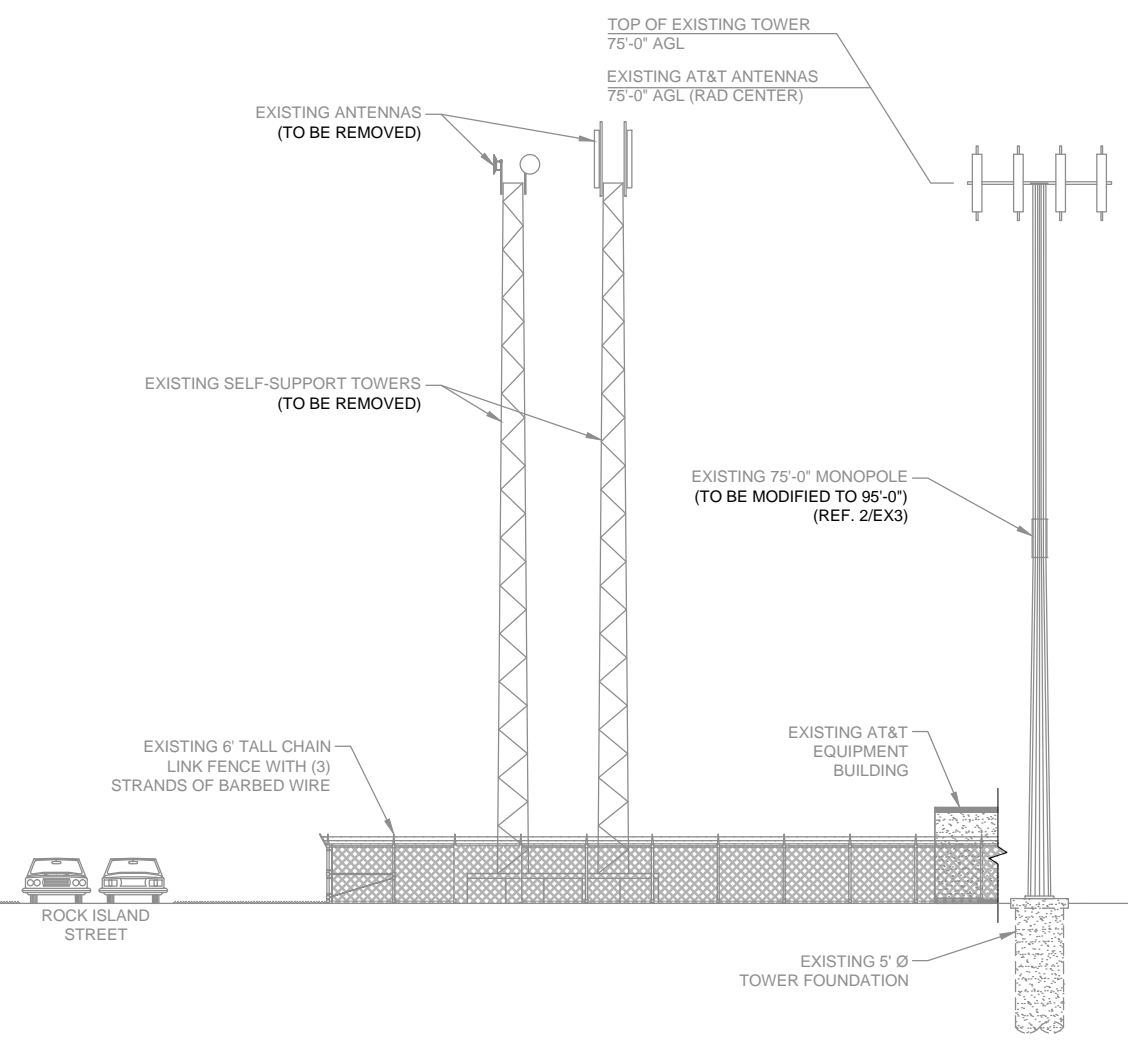
SET ISSUED FOR REVIEW DATE 12/12/16

REVISIONS		
NO.	DATE	DESCRIPTION

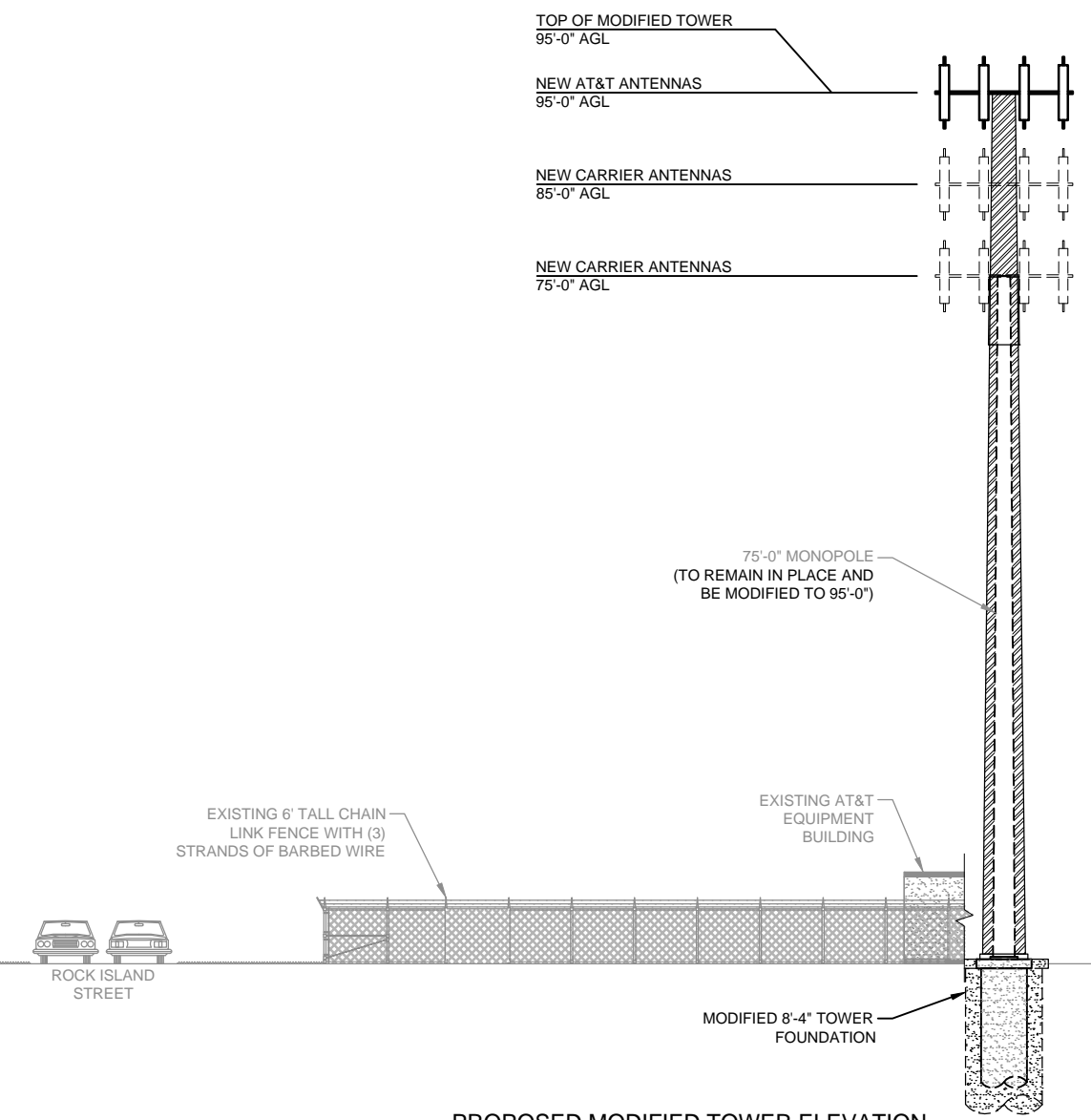
DRAWN BY HAH REVIEWED BY DBS

**ELEVATIONS
EXHIBIT**

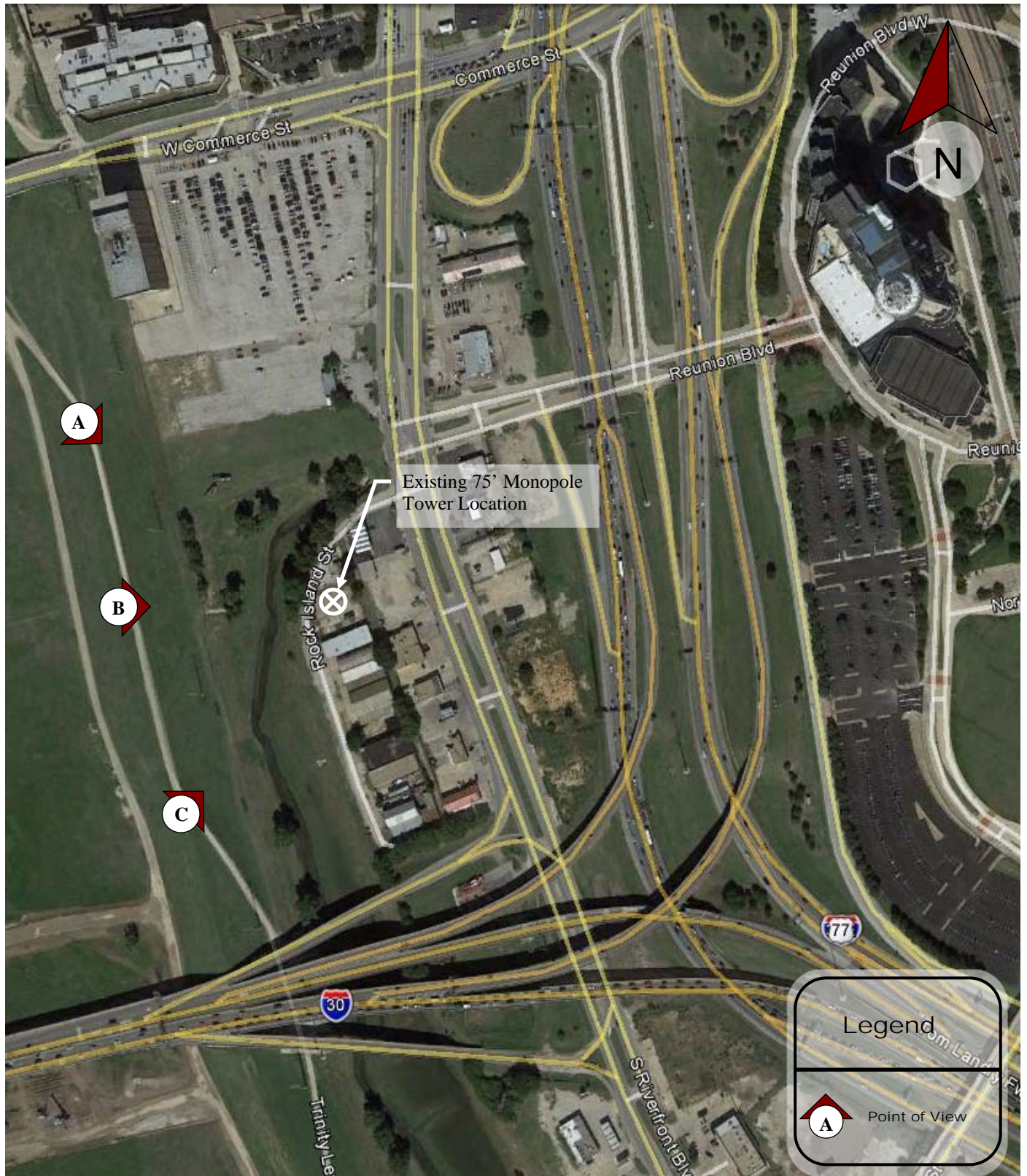
EX3



1 EXISTING TOWER ELEVATION (LOOKING NORTH)
SCALE: 1" = 20'



2 PROPOSED MODIFIED TOWER ELEVATION (LOOKING NORTH)
SCALE: 1" = 20'



(This Photo Simulation is for Illustrative Purposes only)



Existing View to the Southeast



Extended 95' Monopole Tower

(This Photo Simulation is for Illustrative Purposes only)



5920 West William Cannon Blvd., Bldg 1, Ste. 102
Austin, Texas 78749
www.enertechresources.com

CROWN CASTLE

BU856107
INDUSTRIAL

DATE
PRINTED

12/12/2016

A



Existing View to the East



Extended 95' Monopole Tower

(This Photo Simulation is for Illustrative Purposes only)



5920 West William Cannon Blvd., Bldg 1, Ste. 102
Austin, Texas 78749
www.enertechresources.com

CROWN CASTLE

BU856107
INDUSTRIAL

DATE
PRINTED

12/12/2016

B



Existing View to the Northeast



Extended 95' Monopole Tower

(This Photo Simulation is for Illustrative Purposes only)



5920 West William Cannon Blvd., Bldg 1, Ste. 102
Austin, Texas 78749
www.enertechresources.com

CROWN CASTLE

BU856107
INDUSTRIAL

DATE
PRINTED

12/12/2016

C