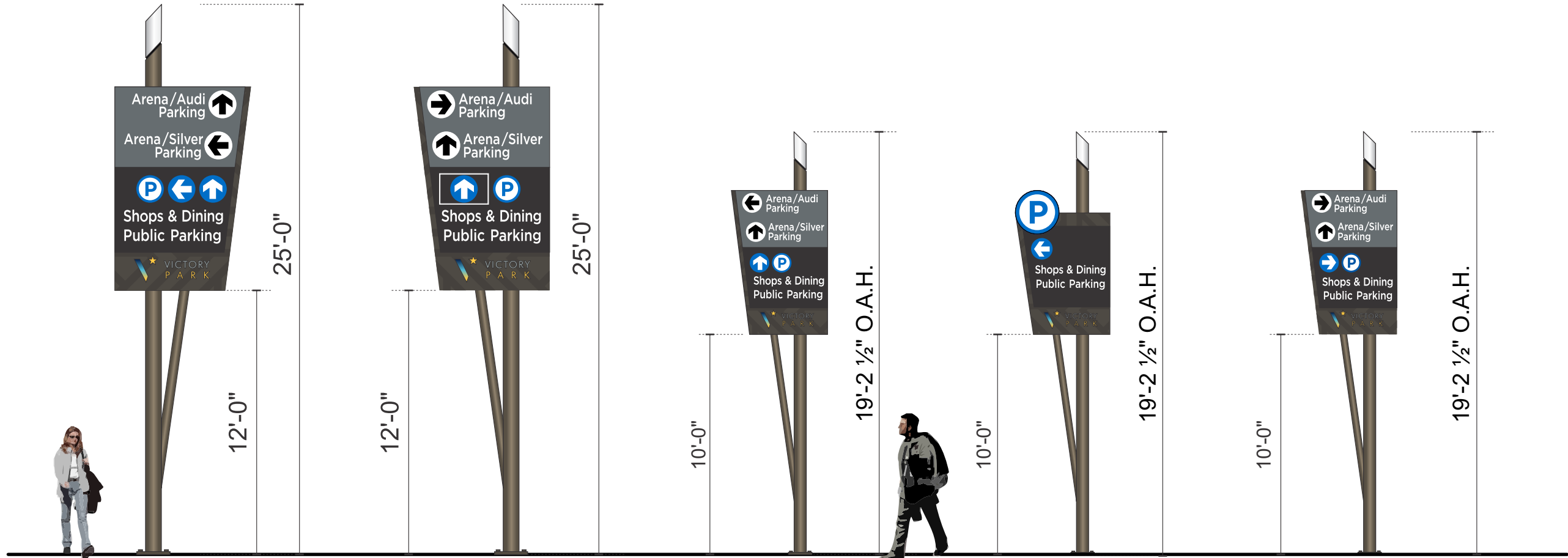


VICTORY PARK

Design #	610152AR18-SIGNS ONLY
Sheet	1 of 25
Location	VICTORY PARK - INDIV. SIGNS
Address	DALLAS, TX
Acct. Rep.	STAN MACRUM
Coordinator	JAMIE MACRUM
Designer	P. AGUIAR
Date	07/16/14
Approval / Date	
Client	
Sales	
Estimating	
Art	
Landlord	
Engineering	
Revision / Date	

R1170813P/A. UPDATED ALL SIGN LOCATIONS & QUANTITIES.
R1170814P/A. ADJUSTED QUANTITY OF "P" DIRECTIONAL TO (5) FIVE. DELETED "P" FROM ENTRANCE AT ARENA.
R1170815P/A. REVISED SIGN SIZES & QUANTITIES PER CUSTOMER.
R1170816P/A. SHOWED EVERY INDIVIDUAL VARYING SIGN WITH SIDES 1 & 2.
R1170817P/A. ALL "P" SIGNS ADJUSTED TO 10 SQ. FT. ADDED ELEC. REQUIREMENTS FOR ALL SIGNS.
R1170818P/A. CHANGES PER ARCHITECTURAL COMMENTS & NOTES 20015.
R1170819P/A. ADDED CIVIL PLANS WITH ZOOMED IN SECTION VIEWS "A,B,C,D".
R1170820P/A. THROUGH FROM 24" MINIMUM TO 30" MINIMUM. ON 3" REDUCED MINIMUM CLEARANCE HEIGHT OF 3.3 SIGNS FROM 6'-0" TO 7'-0".
R1170821P/A. CHANGED 3.2a TO 3.2a. CHANGED 3.2a TO 3.2a & ALL DIRECTIONAL COPY ACCORDINGLY ADDED 1 MORE 3.3 SIGN. 3.2a & 3.2b.
R1170822P/A. CORRECTED CALL OUT LOCATIONS FOR SIGNS 3.2a & 3.2b AT SHOP SECTION "B" CORRECTED CALL OUT FOR 3.2a. ADDED CALLING TO SIGN QUANTITY REFERENCE SHEET.
R1170823P/A. REVISED SIGNOR TIME TO A REGULATED BY CLEARANCE FROM GRADE FOR ALL SIGNS 3.1, 3.2.
R1170824P/A. REVISED ALL COPY ON ALL SIGNS READING "AUDI PARKING" CHANGE AND/OR TO SIGN "ARENA AUDI PARKING" AND "SILVER PARKING" FROM "AUDI PARKING" AND "SILVER PARKING".
R1170825P/A. REVISED ALL VICTORY PARK LOGOS TO HAVE COLOR GRADIENT. ALL 3.1C, 3.2A, 3.2B SPECIFIC COLORS FOR ALL SIGNS. INCLUDING STEEL, REVISED ARROW DIRECTION & DIRECTION OF SIGN 3.2A, 3.2B, 3.2C.
R1170826P/A. ADDED IMAGES OF SIGN NEXT TO IDENTIFY ON SITE PLAN.
R1170827P/A. UPDATED ALL QUANTITIES OF DISTRICT ID. SIGNS "14.3", "14.2" & "13.2".
R1170828P/A. UPDATED WITH COMMENTS FROM STANTEC.
R1170829P/A. ADJUSTED THE ANGLE OF SIGN MOUNTING. USE PROTECTING EDGE "P" AT 90° CLEARANCE FROM GRADE. SIGNS "3.1A, 3.1B, 3.2A, 3.2B".
R1170830P/A. RELOCATED 1.3.3 FROM CONTINENTAL / VICTORY AVE TO CORNER OF 1.3.3 FROM 51 & VICTORY AVE. RELOCATED.
R1170831P/A. 1.3.3 FROM 51 & VICTORY AVE. QUANTITIES DID NOT CHANGE.
R1170832P/A. ADJUSTED LOCATIONS OF 3.2a, 3.2b, 3.2c, 3.2d, 3.2e. DELETED 3.2d FROM SIGN PROGRAM & ADJUSTED QUANTITIES.
R1170833P/A. REVISED BACKGROUNDS OF ALL VEHICULAR DIRECTIONALS TO HAVE A BRITTON GRAPHIC T-MED BRONZE METALLIC MATTE OVER A MED BRONZE METALLIC GLOSS.
R1170834P/A. CHANGED ROOF VICTORY PARK LOGOS TO BE ROUTED OUT FLUSH THRU. REDUCED DEPTH OF SIGN 3.2a TO 10" AND 12" CAB. DEPTH. SAME AS ALL OTHER SIGNS.
R1170835P/A. REVISED ALL ARROWS TO BE ALIGNED / SPACED CONSISTENTLY WITH ANGLE OF SIGN EDGE.
R1170836P/A. REVISED PER RED LINE COMMENTS FROM STANTEC 2/24/15.
R1181817P/A. REVISED PER ADDITIONAL COMMENTS AND REVISIONS DONE TO MOCK UP SAMPLE SIGNS W/O. #811205



3/16"=1'-0"

3.1a

(1) ONE

3.1b

(1) ONE

3.1c

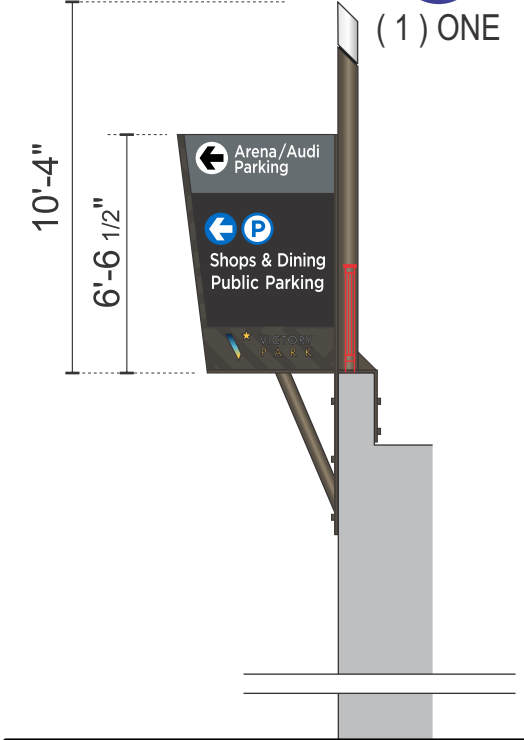
(1) ONE

3.2a

(1) ONE

3.2c

(5) FIVE



3.2e (1) ONE



3.3a (7) SEVEN



3.3b (6) SIX

Chandler Signs
Brand Image Begins Here.

3201 Manor Way Dallas, TX 75235
214-902-2000 Fax 214-902-2044

17319 San Pedro, Ste 200 San Antonio, TX 78223
210-349-3804 Fax 210-349-8724

963 Baxter Avenue, Ste 200 Louisville, KY 40204
502-479-3075 Fax 502-412-0013

2584 Sand Hill Point Circle Davenport, FL 33837
863-420-1100 Fax 863-424-1160

37 Waterfront Park Court Dawsonville, GA 30534
800-851-7062 Fax 210-349-8724

P.O. Box 125 206 Doral Drive Portland, TX 78374
361-563-5599 Fax 361-643-6533

1335 Park Center Drive, UNIT C Vista, CA 92081
760-967-7003 Fax 760-967-7033

This drawing is the property of Chandler Signs, L.P., L.L.P. and all rights to its use for the reproduction are reserved by Chandler Signs, L.P., L.L.P.

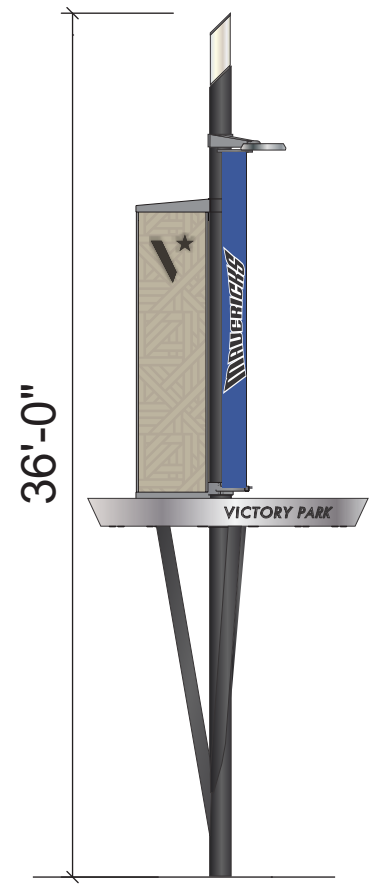
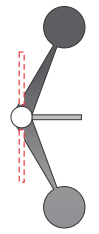
FINAL ELECTRICAL CONNECTION BY CUSTOMER

THIS SIGN IS INTENDED TO BE INSTALLED IN ACCORDANCE WITH ARTICLE 600 OF THE NATIONAL ELECTRICAL CODE AND/OR OTHER APPLICABLE LOCAL CODES. THIS INCLUDES PROPER GROUNDING & BONDING OF THE SIGN. SIGN WILL BEAR UL LABEL(S).

VICTORY PARK

Design #	610152AR18-SIGNS ONLY
Sheet	2 of 25
Location	VICTORY PARK - INDIV. SIGNS
Address	DALLAS, TX
Acct. Rep.	STAN MACRUM
Coordinator	JAMIE MACRUM
Designer	P. AGUIAR
Date	07/16/14
Approval / Date	
Client	
Sales	
Estimating	
Art	
Landlord	
Engineering	

Revision / Date	
R1/10/13PA	UPDATED ALL SIGN LOCATIONS & QUANTITIES.
R2/20/14PA	ADJUSTED QUANTITY OF 9" DIRECTIONAL TO (SEVEN) DELETED FROM ENTRANCE AT AREA.
R3/10/14PA	REVISED SIGN SIZES & QUANTITIES PER CUSTOMER.
R4/10/14PA	SHOWED EVERY INDIVIDUAL VARYING SIGN WITH SIDES 1 & 2.
R5/10/14PA	ALL 33 SIGNS ADJUSTED TO 10 SQ. FT. / ADDED ELEC. REQUIREMENTS FOR ALL SIGNS.
R6/20/14PA	CHANGES PER ARCHITECTURAL COMMENTS & NOTES 20015.
R7/30/14PA	ADDED CIVIL PLANS WITH ZOOMED IN SECTION VIEWS "A,B,C,D".
R8/30/14PA	ADDED CIVIL PLANS WITH ZOOMED IN SECTION VIEWS "A,B,C,D".
R9/30/14PA	ADDED CIVIL PLANS WITH ZOOMED IN SECTION VIEWS "A,B,C,D".
R10/30/14PA	ADDED CIVIL PLANS WITH ZOOMED IN SECTION VIEWS "A,B,C,D".
R11/30/14PA	ADDED CIVIL PLANS WITH ZOOMED IN SECTION VIEWS "A,B,C,D".
R12/30/14PA	ADDED CIVIL PLANS WITH ZOOMED IN SECTION VIEWS "A,B,C,D".
R13/30/14PA	ADDED CIVIL PLANS WITH ZOOMED IN SECTION VIEWS "A,B,C,D".
R14/30/14PA	ADDED CIVIL PLANS WITH ZOOMED IN SECTION VIEWS "A,B,C,D".
R15/30/14PA	ADDED CIVIL PLANS WITH ZOOMED IN SECTION VIEWS "A,B,C,D".
R16/30/14PA	ADDED CIVIL PLANS WITH ZOOMED IN SECTION VIEWS "A,B,C,D".
R17/30/14PA	ADDED CIVIL PLANS WITH ZOOMED IN SECTION VIEWS "A,B,C,D".
R18/30/14PA	ADDED CIVIL PLANS WITH ZOOMED IN SECTION VIEWS "A,B,C,D".
R19/30/14PA	ADDED CIVIL PLANS WITH ZOOMED IN SECTION VIEWS "A,B,C,D".
R20/30/14PA	ADDED CIVIL PLANS WITH ZOOMED IN SECTION VIEWS "A,B,C,D".
R21/30/14PA	ADDED CIVIL PLANS WITH ZOOMED IN SECTION VIEWS "A,B,C,D".
R22/30/14PA	ADDED CIVIL PLANS WITH ZOOMED IN SECTION VIEWS "A,B,C,D".
R23/30/14PA	ADDED CIVIL PLANS WITH ZOOMED IN SECTION VIEWS "A,B,C,D".
R24/30/14PA	ADDED CIVIL PLANS WITH ZOOMED IN SECTION VIEWS "A,B,C,D".
R25/30/14PA	ADDED CIVIL PLANS WITH ZOOMED IN SECTION VIEWS "A,B,C,D".
R26/30/14PA	ADDED CIVIL PLANS WITH ZOOMED IN SECTION VIEWS "A,B,C,D".
R27/30/14PA	ADDED CIVIL PLANS WITH ZOOMED IN SECTION VIEWS "A,B,C,D".
R28/30/14PA	ADDED CIVIL PLANS WITH ZOOMED IN SECTION VIEWS "A,B,C,D".
R29/30/14PA	ADDED CIVIL PLANS WITH ZOOMED IN SECTION VIEWS "A,B,C,D".
R30/30/14PA	ADDED CIVIL PLANS WITH ZOOMED IN SECTION VIEWS "A,B,C,D".
R31/30/14PA	ADDED CIVIL PLANS WITH ZOOMED IN SECTION VIEWS "A,B,C,D".
R32/30/14PA	ADDED CIVIL PLANS WITH ZOOMED IN SECTION VIEWS "A,B,C,D".
R33/30/14PA	ADDED CIVIL PLANS WITH ZOOMED IN SECTION VIEWS "A,B,C,D".
R34/30/14PA	ADDED CIVIL PLANS WITH ZOOMED IN SECTION VIEWS "A,B,C,D".
R35/30/14PA	ADDED CIVIL PLANS WITH ZOOMED IN SECTION VIEWS "A,B,C,D".
R36/30/14PA	ADDED CIVIL PLANS WITH ZOOMED IN SECTION VIEWS "A,B,C,D".
R37/30/14PA	ADDED CIVIL PLANS WITH ZOOMED IN SECTION VIEWS "A,B,C,D".
R38/30/14PA	ADDED CIVIL PLANS WITH ZOOMED IN SECTION VIEWS "A,B,C,D".
R39/30/14PA	ADDED CIVIL PLANS WITH ZOOMED IN SECTION VIEWS "A,B,C,D".
R40/30/14PA	ADDED CIVIL PLANS WITH ZOOMED IN SECTION VIEWS "A,B,C,D".
R41/30/14PA	ADDED CIVIL PLANS WITH ZOOMED IN SECTION VIEWS "A,B,C,D".
R42/30/14PA	ADDED CIVIL PLANS WITH ZOOMED IN SECTION VIEWS "A,B,C,D".
R43/30/14PA	ADDED CIVIL PLANS WITH ZOOMED IN SECTION VIEWS "A,B,C,D".
R44/30/14PA	ADDED CIVIL PLANS WITH ZOOMED IN SECTION VIEWS "A,B,C,D".
R45/30/14PA	ADDED CIVIL PLANS WITH ZOOMED IN SECTION VIEWS "A,B,C,D".
R46/30/14PA	ADDED CIVIL PLANS WITH ZOOMED IN SECTION VIEWS "A,B,C,D".
R47/30/14PA	ADDED CIVIL PLANS WITH ZOOMED IN SECTION VIEWS "A,B,C,D".
R48/30/14PA	ADDED CIVIL PLANS WITH ZOOMED IN SECTION VIEWS "A,B,C,D".
R49/30/14PA	ADDED CIVIL PLANS WITH ZOOMED IN SECTION VIEWS "A,B,C,D".
R50/30/14PA	ADDED CIVIL PLANS WITH ZOOMED IN SECTION VIEWS "A,B,C,D".



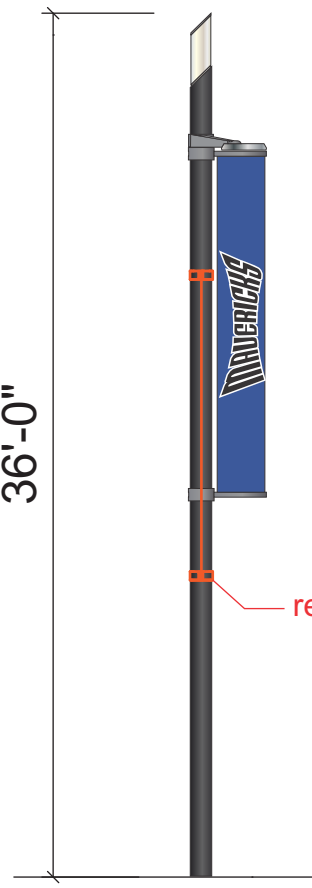
1.3.2

(6) SIX TOTAL
 District Markers without planter for perimeter street & Museum Way median locations.
 (8) EIGHT (perimeter)
 District ID's will have Static White L.E.D. illumination at Perforated Blade.



1.4.2

(3) THREE
 District Marker with planter along VPL locations.
 Will have RGB Color Changing L.E.D. illumination at Perforated Blade.



1.4.3

(13) THIRTEEN
 Temporary Banners & Arms to be Removed.
 Single, permanent, taller banners at 3:00 Position;
 For use at Planters;
 Temp Pole remains.

Chandler Signs
 Brand Image Begins Here.

3201 Manor Way 214-902-2000	Dallas, TX 75235 Fax 214-902-2044
17319 San Pedro, Ste 200 210-349-3804	San Antonio, TX 78223 Fax 210-349-8724
963 Baxter Avenue, Ste 200 502-479-3075	Louisville, KY 40204 Fax 502-412-0013
2584 Sand Hill Point Circle 863-420-1100	Davenport, FL 33837 Fax 863-424-1160
37 Waterfront Park Court 800-851-7062	Dawsonville, GA 30534 Fax 210-349-8724
P.O. Box 125 206 Dorral Drive 361-563-5599	Portland, TX 78374 Fax 361-643-6533
1335 Park Center Drive, UNIT C 760-967-7003	Vista, CA 92081 Fax 760-967-7033

This drawing is the property of Chandler Signs, L.P., L.L.P. and all rights to its use for the reproduction are reserved by Chandler Signs, L.P., L.L.P.

FINAL ELECTRICAL CONNECTION BY CUSTOMER

THIS SIGN IS INTENDED TO BE INSTALLED IN ACCORDANCE WITH ARTICLE 600 OF THE NATIONAL ELECTRICAL CODE AND/OR OTHER APPLICABLE LOCAL CODES. THIS INCLUDES PROPER GROUNDING & BONDING OF THE SIGN. SIGN WILL BEAR UL LABEL(S).

Top & Bottom Do not have any Pattern Details.

VICTORY PARK

Design #	610152AR18-SIGNS ONLY
Sheet	4 of 25
Location	VICTORY PARK - INDIV. SIGNS
Address	DALLAS, TX
Acct. Rep.	STAN MACRUM
Coordinator	JAMIE MACRUM
Designer	P. AGUIAR
Date	07/16/14
Approval / Date	
Client	
Sales	
Estimating	
Art	
Landlord	
Engineering	

Revision / Date
R1/10/13P1. UPDATED ALL SIGN LOCATIONS & QUANTITIES.
R2/20/14P1. ADJUSTED QUANTITY OF 9" DIRECTIONAL TO (SEVEN) DELETED FROM ENTRANCE AT AREA.
R3/10/14P1. REVISED SIGN SIZES & QUANTITIES PER CUSTOMER.
R4/10/14P1. SHOWED EVERY INDIVIDUAL VARYING SIGN WITH SIDES 1 & 2.
R5/11/14P1. ALL 33 SIGNS ADJUSTED TO 10 SQ. FT. ADDED ELEC. REQUIREMENTS FOR ALL SIGNS.
R6/20/14P1. CHANGES PER ARCHITECTURAL COMMENTS & NOTES 20015.
R7/30/14P1. ADDED CIVIL PLANS WITH ZOOMED IN SECTION VIEWS "A,B,C,D".
R8/05/14P1. THROUGH THE DAY SIGNAGE TO BE "FLUSH" SURFACE ON 3RD. CLEARANCE HEIGHT OF 3.3 SIGNS FROM 6" TO 7.2".
R9/10/14P1. CHANGED 3.2M TO 3.2M. CHANGED 3.2M TO 3.2M & ALL DIRECTIONAL COPY ACCORDINGLY ADDED 1 MORE 3.3 SIGN. 3.2M & 3.2M.
R10/11/14P1. CORRECTED CALL OUT LOCATIONS FOR SIGNS 3.2M & 3.2M AT SWP SECTION 9. CORRECTED CALL OUT FOR 3.2M ADDED DISTING TO SIGN QUANTITY REFERENCE SHEET.
R11/05/14P1. REVISED SIGN TIME TO A REGULATED BY CLEARANCE FROM GRADE FOR ALL SIGNS 3.1, 3.2.
R12/10/14P1. REVISED ALL COPY ON ALL SIGNS READING "Audi Parking" TO BE "Arena/Audi Parking" TO BE "Arena/Silver Parking" TO BE "Arena/Silver Parking". ALL THE CHANGES FOR CONSISTENT MESSAGE. 1.8M ON SIGNET & REFINED MESSAGE AT WEST FACE FOR SIGN LOCATIONS 1.8 TO 3.0 OF CONTINENTAL.
R13/10/14P1. REVISED ALL VICTORY PARK LOGOS TO HAVE COLOR GRADIENT. ALL 1.1C, 1.2A, 1.3C. BEING CHANGED TO ALL VICTORY PARK LOGOS TO BE "FLUSH" SURFACE ON 3RD. CLEARANCE HEIGHT OF 3.3 SIGNS FROM 6" TO 7.2".
R14/10/14P1. ADDED IMAGES OF SIGN NEXT TO IDENTIFIERS ON SITE PLAN.
R15/10/14P1. UPDATED ALL QUANTITIES OF DISTRICT ID. SIGNS "1.4.1", "1.4.2" & "1.3.2".
R16/10/14P1. UPDATED WITH COMMENTS FROM STANTEC.
R17/10/14P1. ADJUSTED THE ANGLE OF THE LOCATOR STEEL. USE PROTECTING EDGE "P" AT 6" CLEARANCE FROM GRADE. SIGNS "3.1A, 3.1B, 3.1C, 3.2A, 3.2B, 3.2C".
R18/10/14P1. RELOCATED 1.3.2 FROM CONTINENTAL / VICTORY AVE TO CORNER 12.3 FROM HIGH LIMIT 31 TO VICTORY & CONTINENTAL AVE. QUANTITIES DID NOT CHANGE.
R19/10/14P1. ADJUSTED LOCATIONS OF: 1.3M, 3.2M, 3.1M, 3.2M. DELETED 2.2M FROM SIGN PROGRAM & ADJUSTED QUANTITIES.
R20/10/14P1. REVISED BACKGROUNDS OF ALL VEHICULAR DIRECTIONALS TO HAVE A "MATTED BRONZE" FINISH. BRONZE METALLIC MATTE OVER A MED. BRONZE METALLIC GLOSS. CHANGED ROOF VICTORY PARK LOGOS TO BE "ROUT-OUT FLUSH-THRU". REDUCED DEPTH OF SIGN 3.2M TO 10" AND 1.2" CAB. DEPTH. SAME AS ALL OTHER SIGNS.
R21/10/14P1. REVISED ALL ARROWS TO BE ALIGNED / SPACED CONSISTENTLY WITH ANGLE OF SIGN EDGE.
R22/10/14P1. REVISED PER RED LINE COMMENTS FROM STANTEC 2/24/15.
R23/10/14P1. REVISED PER RED LINE COMMENTS FROM STANTEC 2/24/15.
R24/10/14P1. REVISED PER ADDITIONAL COMMENTS AND REVISIONS DONE TO MOCK UP SAMPLE SIGNS W/O. #81205.

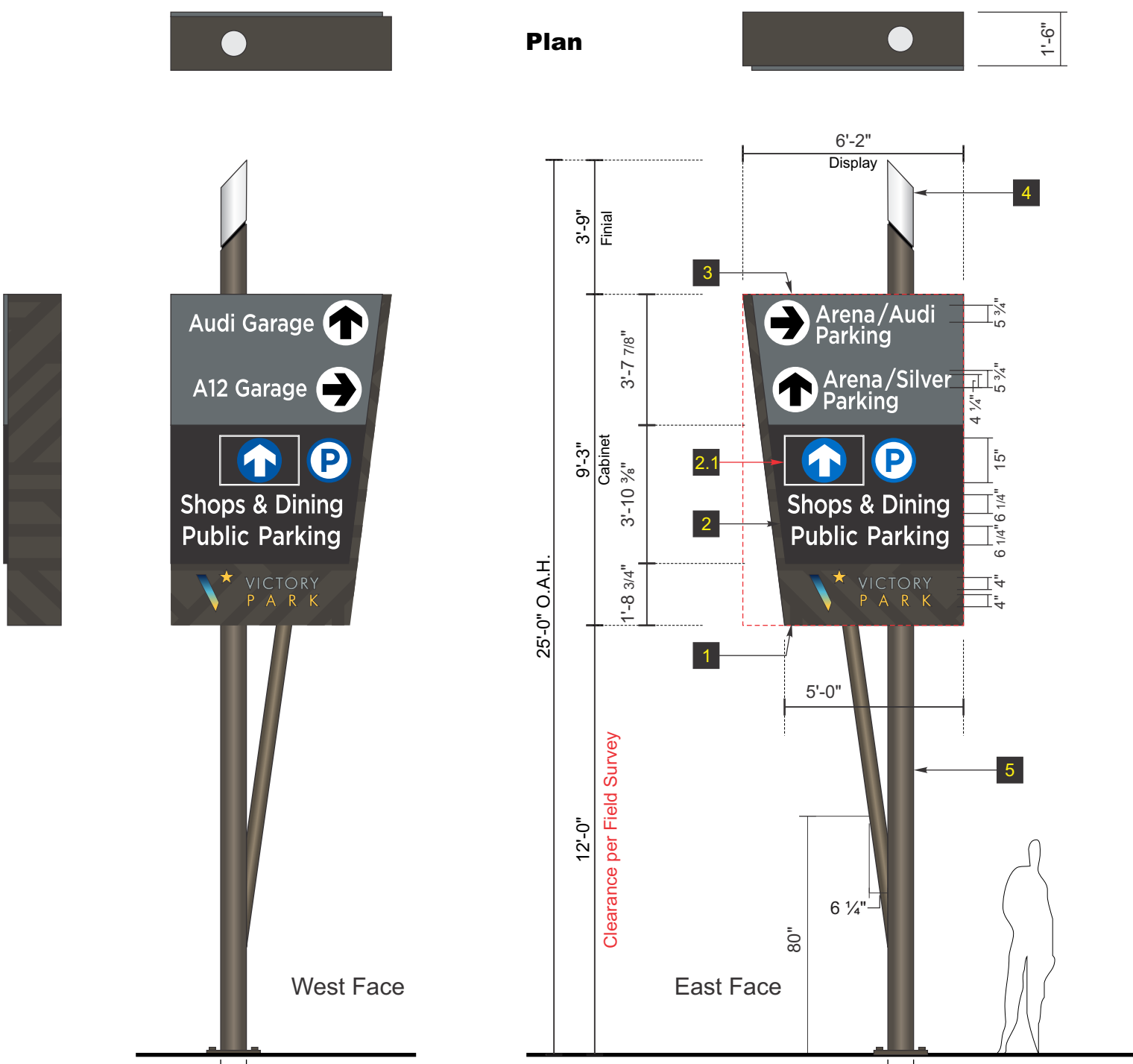


3201 Manor Way 214-902-2000	Dallas, TX 75235 Fax 214-902-2044
17319 San Pedro, Ste 200 210-349-3804	San Antonio, TX 78223 Fax 210-349-8724
963 Baxter Avenue, Ste 200 502-479-3075	Louisville, KY 40204 Fax 502-412-0013
2584 Sand Hill Point Circle 863-420-1100	Davenport, FL 33837 Fax 863-424-1160
37 Waterfront Park Court 800-851-7062	Dawsonville, GA 30534 Fax 210-349-8724
P.O. Box 125 Doral Drive 361-563-5599	Portland, TX 78374 Fax 361-643-6533
1335 Park Center Drive, UNIT C 760-967-7003	Vista, CA 92081 Fax 760-967-7033

This drawing is the property of Chandler Signs, L.P., L.L.P. and all rights to its use for the reproduction are reserved by Chandler Signs, L.P., L.L.P.

FINAL ELECTRICAL CONNECTION BY CUSTOMER

THIS SIGN IS INTENDED TO BE INSTALLED IN ACCORDANCE WITH ARTICLE 600 OF THE NATIONAL ELECTRICAL CODE AND/OR OTHER APPLICABLE LOCAL CODES. THIS INCLUDES PROPER GROUNDING & BONDING OF THE SIGN. SIGN WILL BEAR UL LABEL(S).



1 Aluminum fabricated Cabinet:
painted Medium Bronze Metallic Gloss.

Pattern Details:
painted Medium Bronze Metallic Matte.

“Victory Park”
Rout-Out Flush-Thru 1/4" thk. Clear Acrylic Copy, 2nd. surface applied White Diffuser Film & 1st. surface applied Digitally Printed vinyl Graphic. Internally illuminated with 7100k White LED's.

“V” & “★”
Rout-Out Flush-Thru 1/4" thk. Clear Acrylic Logo, 2nd. surface applied White Diffuser Film & 1st. surface applied Digitally Printed vinyl Graphic. Internally illuminated with 7100k White LED's.

2 Aluminum fabricated Pan-Panel Faces painted Finish
(PMS Black Satin)

Rout-Out Sho-Thru Circles, Copy, backed with #7328 White Acrylic & 1st. surface applied Translucent #3630-127 Intense Blue Vinyl Graphics as shown. Internally illuminated with 7100k White LED's.

2.1 L.E.D. Variable message display
(displays an arrow graphic - direction can be changed)

3 Aluminum fabricated Pan-Panel Faces painted Finish
(Tiger Drylac 038/90011 Argento 308 Metallic)

Rout-Out Sho-Thru Circles, Copy, backed with #7328 White Acrylic & 1st. surface applied #3630-22 Black Vinyl Arrow Graphics as shown. Internally illuminated with 7100k White LED's.

4 Fabricated Cylindrical White Acrylic Finial Sconce,
Internally Illuminated with White LED lamp.
Locate power supply within cabinet.

5 8" ID. x .322" wall Steel Support and Welded Steel Mounting Plate with Pre-drilled mounting Holes.
J-Bolt & Concrete Pier is to be Engineered.

4" ID. x .237" wall Steel Decorative Support.

Steel Support to be primed & painted to match:
P.1 - Tiger Drylac Powdercoat 038/60060 Med. Bronze Metallic.

Provide a ground embedded conduit prior to concrete pier pouring.

Primary Power provided by GC.

Electrical Requirements

Approx. .5A
(1) one 120v. 20A circuit required.



End View

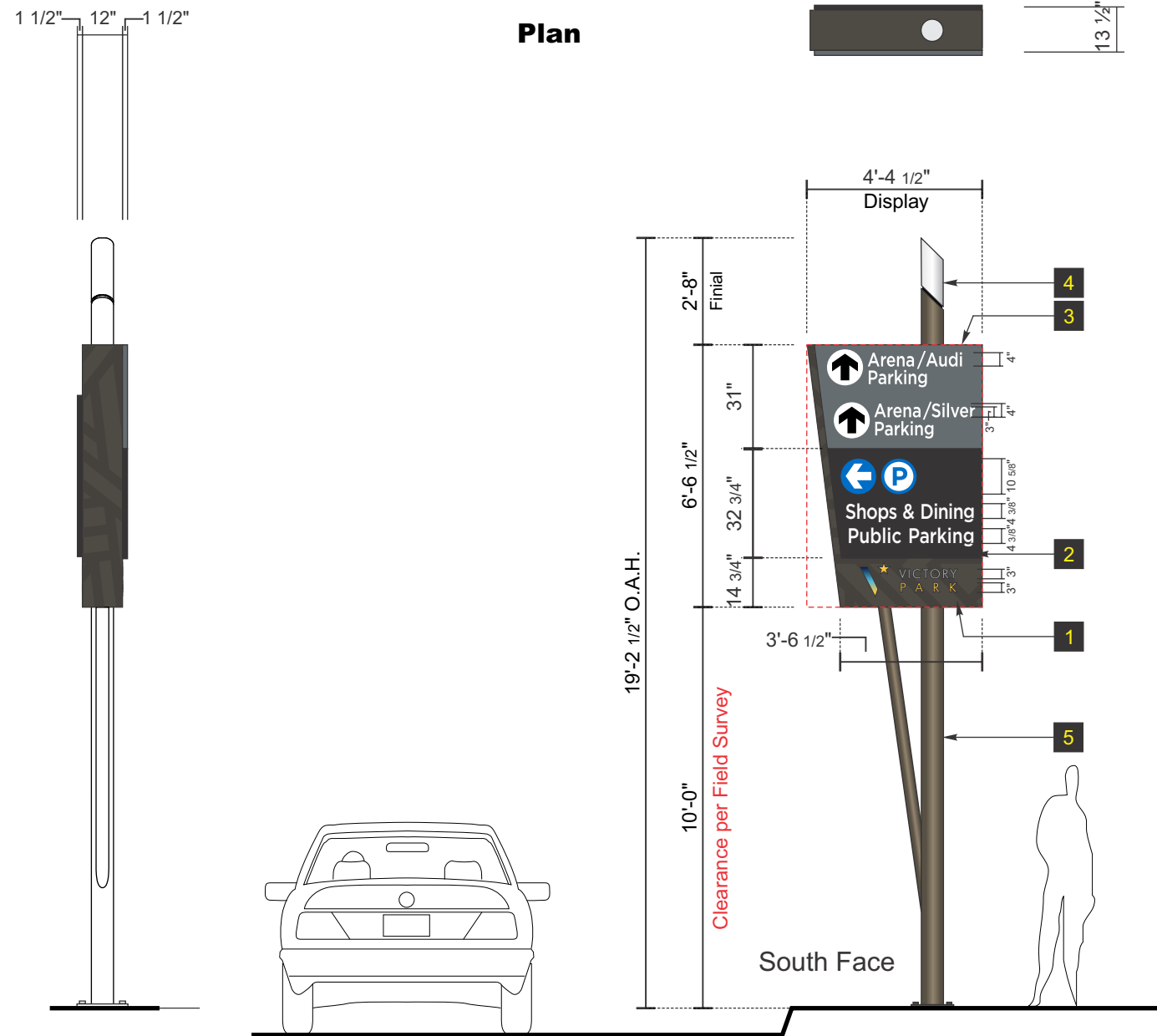
3.1b 3.1 DYNAMIC SIGN - ELEVATION

1 ONE (1) REQUIRED - MANUFACTURE AND INSTALL

SCALE: 1/4" = 1'-0"

SQ. FT.: 57.04 EA.

Top & Bottom Do not have any Pattern Details.



End View

3.2c SPLITTER SIGN - ELEVATION
ONE (1) REQUIRED - MANUFACTURE AND INSTALL

SCALE: 1/4" = 1'-0"

SQ. FT.: 28.07

1 Aluminum fabricated Cabinet:
painted Medium Bronze Metallic Gloss.

Pattern Details:
painted Medium Bronze Metallic Matte.

"Victory Park"
Rout-Out Flush-Thru 1/4" thk. Clear Acrylic Copy, 2nd. surface applied White Diffuser Film & 1st. surface applied Digitally Printed vinyl Graphic. Internally illuminated with 7100k White LED's.

"V" & "★"
Rout-Out Flush-Thru 1/4" thk. Clear Acrylic Logo, 2nd. surface applied White Diffuser Film & 1st. surface applied Digitally Printed vinyl Graphic. Internally illuminated with 7100k White LED's.

2 Aluminum fabricated Pan-Panel Faces painted Finish (PMS Black Satin)

Rout-Out Sho-Thru Circles, Copy, backed with #7328 White Acrylic & 1st. surface applied Translucent #3630-127 Intense Blue Vinyl Graphics as shown. Internally illuminated with 7100k White LED's.

3 Aluminum fabricated Pan-Panel Faces painted Finish (Tiger Drylac 038/90011 Argento 308 Metallic)

Rout-Out Sho-Thru Circles, Copy, backed with #7328 White Acrylic & 1st. surface applied #3630-22 Black Vinyl Arrow Graphics as shown. Internally illuminated with 7100k White LED's.

4 Fabricated Cylindrical White Acrylic Finial Sconce, Internally Illuminated with White LED Lamp. Locate power supply within cabinet.

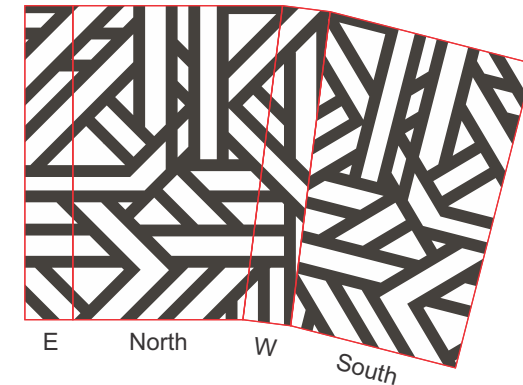
5 6" ID. x .28" wall Steel Support and Welded Steel Mounting Plate with Pre-drilled mounting Holes. J-Bolt & Concrete Pier is to be Engineered.

3" ID. x .216" wall Steel Decorative Support.

Steel Support to be primed & painted to match:
P.1 - Tiger Drylac Powdercoat 038/60060 Med. Bronze Metallic.

Provide a ground embedded conduit prior to concrete pier pouring.

Primary Power provided by GC.



GRID PATTERN LAYOUT
Composed per Stantec Artwork



Electrical Requirements

Approx. .5A
(1) one 120v. 20A circuit required.

VICTORY PARK

Design #	610152AR18-SIGNS ONLY
Sheet	11 of 25
Location	VICTORY PARK - INDIV. SIGNS
Address	DALLAS, TX
Acct. Rep.	STAN MACRUM
Coordinator	JAMIE MACRUM
Designer	P. AGUIAR
Date	07/16/14
Approval / Date	
Client	
Sales	
Estimating	
Art	
Landlord	
Engineering	
Revision / Date	

R11070813PRL UPDATED ALL SIGN LOCATIONS & QUANTITIES.
R102014PRL ADJUSTED QUANTITY OF "P" DIRECTIONAL TO (SEVEN) DELETED FROM ENTRANCE AT ARENA.
R10100214PRL REVISED SIGN SIZES & QUANTITIES PER CUSTOMER.
R14102814PRL SHOWED EVERY INDIVIDUAL WORKING SIGN WITH SIDES 1 & 2.
R111014PRL ALL "P" SIGNS ADJUSTED TO 10 SQ. FT. ADDED ELEC. REQUIREMENTS FOR ALL SIGNS.
R1031015PRL CHANGES PER ARCHITECTURAL COMMENTS & NOTES 20015.
R1031015PRL ADDED CIVIL PLANS WITH ZOOMED IN SECTION VIEWS "A,B,C,D". DIMENSIONS THROUGH EDGE OF SIGNFACE. "D" DIMENSION THROUGH SIGNFACE CLEARANCE HEIGHT OF 3.3 SIGNS FROM 6" TO 7.4".
R141015PRL CHANGED 3.2M TO 3.2M CHANGED 3.2M TO 3.2M & ALL DIRECTIONAL COPY ACCORDINGLY ADDED 1 MORE "P" SIGN. 3.2M & 3.2M.
R141015PRL CORRECTED CALL OUT LOCATIONS FOR SIGNS 3.2M & 3.2M AT MAP SECTION "B" CORRECTED CALL OUT FOR 3.2M ADDED DISTING. TO SIGN QUANTITY REFERENCE SHEET.
R141015PRL REVISED SIGN FACE TO A REGULATED BY CLEARANCE FROM GRADE FOR ALL SIGNS 3.1, 3.2.
R141015PRL REVISED ALL COPY ON ALL SIGNS READING "SHOPS & DINING PUBLIC PARKING" TO SIGN "ARENA/SILVER PARKING" AND "ARENA/AUDI PARKING" TO SIGN "ARENA/SILVER PARKING".
R141015PRL REVISED ALL VICTORY PARK LOGOS TO HAVE COLOR GRADIENT ALL 1.1C, 1.2C, 1.3C BREAK COLORS FOR ALL SIGNS. INCLUDES STEEL, REVISED SIGN ORIENTATION & DIMENSIONS OF SIGN 1.2C, 1.2C, 1.2C.
R141015PRL ADDED IMAGES OF SIGN NEXT TO IDENTIFIERS ON SITE PLAN.
R141015PRL UPDATED ALL QUANTITIES OF DISTRICT ID. SIGNS "1.4.1", "1.4.2" & "1.3.2".
R141015PRL UPDATED WITH COMMENTS FROM STANTEC.
R141015PRL ADJUSTED THE ANGLE OF THE SIGNFACE. USE PROTECTING EDGE "P" AT 90° CLEARANCE FROM GRADE. SIGNS "3.1A, 3.1B, 3.1C, 3.1D, 3.1E, 3.1F, 3.1G, 3.1H, 3.1I, 3.1J, 3.1K, 3.1L, 3.1M, 3.1N, 3.1O, 3.1P, 3.1Q, 3.1R, 3.1S, 3.1T, 3.1U, 3.1V, 3.1W, 3.1X, 3.1Y, 3.1Z, 3.1AA, 3.1AB, 3.1AC, 3.1AD, 3.1AE, 3.1AF, 3.1AG, 3.1AH, 3.1AI, 3.1AJ, 3.1AK, 3.1AL, 3.1AM, 3.1AN, 3.1AO, 3.1AP, 3.1AQ, 3.1AR, 3.1AS, 3.1AT, 3.1AU, 3.1AV, 3.1AW, 3.1AX, 3.1AY, 3.1AZ, 3.1BA, 3.1BB, 3.1BC, 3.1BD, 3.1BE, 3.1BF, 3.1BG, 3.1BH, 3.1BI, 3.1BJ, 3.1BK, 3.1BL, 3.1BM, 3.1BN, 3.1BO, 3.1BP, 3.1BQ, 3.1BR, 3.1BS, 3.1BT, 3.1BU, 3.1BV, 3.1BW, 3.1BX, 3.1BY, 3.1BZ, 3.1CA, 3.1CB, 3.1CC, 3.1CD, 3.1CE, 3.1CF, 3.1CG, 3.1CH, 3.1CI, 3.1CJ, 3.1CK, 3.1CL, 3.1CM, 3.1CN, 3.1CO, 3.1CP, 3.1CQ, 3.1CR, 3.1CS, 3.1CT, 3.1CU, 3.1CV, 3.1CW, 3.1CX, 3.1CY, 3.1CZ, 3.1DA, 3.1DB, 3.1DC, 3.1DD, 3.1DE, 3.1DF, 3.1DG, 3.1DH, 3.1DI, 3.1DJ, 3.1DK, 3.1DL, 3.1DM, 3.1DN, 3.1DO, 3.1DP, 3.1DQ, 3.1DR, 3.1DS, 3.1DT, 3.1DU, 3.1DV, 3.1DW, 3.1DX, 3.1DY, 3.1DZ, 3.1EA, 3.1EB, 3.1EC, 3.1ED, 3.1EE, 3.1EF, 3.1EG, 3.1EH, 3.1EI, 3.1EJ, 3.1EK, 3.1EL, 3.1EM, 3.1EN, 3.1EO, 3.1EP, 3.1EQ, 3.1ER, 3.1ES, 3.1ET, 3.1EU, 3.1EV, 3.1EW, 3.1EX, 3.1EY, 3.1EZ, 3.1FA, 3.1FB, 3.1FC, 3.1FD, 3.1FE, 3.1FF, 3.1FG, 3.1FH, 3.1FI, 3.1FJ, 3.1FK, 3.1FL, 3.1FM, 3.1FN, 3.1FO, 3.1FP, 3.1FQ, 3.1FR, 3.1FS, 3.1FT, 3.1FU, 3.1FV, 3.1FW, 3.1FX, 3.1FY, 3.1FZ, 3.1GA, 3.1GB, 3.1GC, 3.1GD, 3.1GE, 3.1GF, 3.1GG, 3.1GH, 3.1GI, 3.1GJ, 3.1GK, 3.1GL, 3.1GM, 3.1GN, 3.1GO, 3.1GP, 3.1GQ, 3.1GR, 3.1GS, 3.1GT, 3.1GU, 3.1GV, 3.1GW, 3.1GX, 3.1GY, 3.1GZ, 3.1HA, 3.1HB, 3.1HC, 3.1HD, 3.1HE, 3.1HF, 3.1HG, 3.1HH, 3.1HI, 3.1HJ, 3.1HK, 3.1HL, 3.1HM, 3.1HN, 3.1HO, 3.1HP, 3.1HQ, 3.1HR, 3.1HS, 3.1HT, 3.1HU, 3.1HV, 3.1HW, 3.1HX, 3.1HY, 3.1HZ, 3.1IA, 3.1IB, 3.1IC, 3.1ID, 3.1IE, 3.1IF, 3.1IG, 3.1IH, 3.1II, 3.1IJ, 3.1IK, 3.1IL, 3.1IM, 3.1IN, 3.1IO, 3.1IP, 3.1IQ, 3.1IR, 3.1IS, 3.1IT, 3.1IU, 3.1IV, 3.1IW, 3.1IX, 3.1IY, 3.1IZ, 3.1JA, 3.1JB, 3.1JC, 3.1JD, 3.1JE, 3.1JF, 3.1JG, 3.1JH, 3.1JI, 3.1JJ, 3.1JK, 3.1JL, 3.1JM, 3.1JN, 3.1JO, 3.1JP, 3.1JQ, 3.1JR, 3.1JS, 3.1JT, 3.1JU, 3.1JV, 3.1JW, 3.1JX, 3.1JY, 3.1JZ, 3.1KA, 3.1KB, 3.1KC, 3.1KD, 3.1KE, 3.1KF, 3.1KG, 3.1KH, 3.1KI, 3.1KJ, 3.1KL, 3.1KM, 3.1KN, 3.1KO, 3.1KP, 3.1KQ, 3.1KR, 3.1KS, 3.1KT, 3.1KU, 3.1KV, 3.1KW, 3.1KX, 3.1KY, 3.1KZ, 3.1LA, 3.1LB, 3.1LC, 3.1LD, 3.1LE, 3.1LF, 3.1LG, 3.1LH, 3.1LI, 3.1LJ, 3.1LK, 3.1LL, 3.1LM, 3.1LN, 3.1LO, 3.1LP, 3.1LQ, 3.1LR, 3.1LS, 3.1LT, 3.1LU, 3.1LV, 3.1LW, 3.1LX, 3.1LY, 3.1LZ, 3.1MA, 3.1MB, 3.1MC, 3.1MD, 3.1ME, 3.1MF, 3.1MG, 3.1MH, 3.1MI, 3.1MJ, 3.1MK, 3.1ML, 3.1MN, 3.1MO, 3.1MP, 3.1MQ, 3.1MR, 3.1MS, 3.1MT, 3.1MU, 3.1MV, 3.1MW, 3.1MX, 3.1MY, 3.1MZ, 3.1NA, 3.1NB, 3.1NC, 3.1ND, 3.1NE, 3.1NF, 3.1NG, 3.1NH, 3.1NI, 3.1NJ, 3.1NK, 3.1NL, 3.1NM, 3.1NO, 3.1NP, 3.1NQ, 3.1NR, 3.1NS, 3.1NT, 3.1NU, 3.1NV, 3.1NW, 3.1NX, 3.1NY, 3.1NZ, 3.1OA, 3.1OB, 3.1OC, 3.1OD, 3.1OE, 3.1OF, 3.1OG, 3.1OH, 3.1OI, 3.1OJ, 3.1OK, 3.1OL, 3.1OM, 3.1ON, 3.1OO, 3.1OP, 3.1OQ, 3.1OR, 3.1OS, 3.1OT, 3.1OU, 3.1OV, 3.1OW, 3.1OX, 3.1OY, 3.1OZ, 3.1PA, 3.1PB, 3.1PC, 3.1PD, 3.1PE, 3.1PF, 3.1PG, 3.1PH, 3.1PI, 3.1PJ, 3.1PK, 3.1PL, 3.1PM, 3.1PN, 3.1PO, 3.1PP, 3.1PQ, 3.1PR, 3.1PS, 3.1PT, 3.1PU, 3.1PV, 3.1PW, 3.1PX, 3.1PY, 3.1PZ, 3.1QA, 3.1QB, 3.1QC, 3.1QD, 3.1QE, 3.1QF, 3.1QG, 3.1QH, 3.1QI, 3.1QJ, 3.1QK, 3.1QL, 3.1QM, 3.1QN, 3.1QO, 3.1QP, 3.1QQ, 3.1QR, 3.1QS, 3.1QT, 3.1QU, 3.1QV, 3.1QW, 3.1QX, 3.1QY, 3.1QZ, 3.1RA, 3.1RB, 3.1RC, 3.1RD, 3.1RE, 3.1RF, 3.1RG, 3.1RH, 3.1RI, 3.1RJ, 3.1RK, 3.1RL, 3.1RM, 3.1RN, 3.1RO, 3.1RP, 3.1RQ, 3.1RR, 3.1RS, 3.1RT, 3.1RU, 3.1RV, 3.1RW, 3.1RX, 3.1RY, 3.1RZ, 3.1SA, 3.1SB, 3.1SC, 3.1SD, 3.1SE, 3.1SF, 3.1SG, 3.1SH, 3.1SI, 3.1SJ, 3.1SK, 3.1SL, 3.1SM, 3.1SN, 3.1SO, 3.1SP, 3.1SQ, 3.1SR, 3.1SS, 3.1ST, 3.1SU, 3.1SV, 3.1SW, 3.1SX, 3.1SY, 3.1SZ, 3.1TA, 3.1TB, 3.1TC, 3.1TD, 3.1TE, 3.1TF, 3.1TG, 3.1TH, 3.1TI, 3.1TJ, 3.1TK, 3.1TL, 3.1TM, 3.1TN, 3.1TO, 3.1TP, 3.1TQ, 3.1TR, 3.1TS, 3.1TT, 3.1TU, 3.1TV, 3.1TW, 3.1TX, 3.1TY, 3.1TZ, 3.1UA, 3.1UB, 3.1UC, 3.1UD, 3.1UE, 3.1UF, 3.1UG, 3.1UH, 3.1UI, 3.1UJ, 3.1UK, 3.1UL, 3.1UM, 3.1UN, 3.1UO, 3.1UP, 3.1UQ, 3.1UR, 3.1US, 3.1UT, 3.1UU, 3.1UV, 3.1UW, 3.1UX, 3.1UY, 3.1UZ, 3.1VA, 3.1VB, 3.1VC, 3.1VD, 3.1VE, 3.1VF, 3.1VG, 3.1VH, 3.1VI, 3.1VJ, 3.1VK, 3.1VL, 3.1VM, 3.1VN, 3.1VO, 3.1VP, 3.1VQ, 3.1VR, 3.1VS, 3.1VT, 3.1VU, 3.1VV, 3.1VW, 3.1VX, 3.1VY, 3.1VZ, 3.1WA, 3.1WB, 3.1WC, 3.1WD, 3.1WE, 3.1WF, 3.1WG, 3.1WH, 3.1WI, 3.1WJ, 3.1WK, 3.1WL, 3.1WM, 3.1WN, 3.1WO, 3.1WP, 3.1WQ, 3.1WR, 3.1WS, 3.1WT, 3.1WU, 3.1WV, 3.1WW, 3.1WX, 3.1WY, 3.1WZ, 3.1XA, 3.1XB, 3.1XC, 3.1XD, 3.1XE, 3.1XF, 3.1XG, 3.1XH, 3.1XI, 3.1XJ, 3.1XK, 3.1XL, 3.1XM, 3.1XN, 3.1XO, 3.1XP, 3.1XQ, 3.1XR, 3.1XS, 3.1XT, 3.1XU, 3.1XV, 3.1XW, 3.1XX, 3.1XY, 3.1XZ, 3.1YA, 3.1YB, 3.1YC, 3.1YD, 3.1YE, 3.1YF, 3.1YG, 3.1YH, 3.1YI, 3.1YJ, 3.1YK, 3.1YL, 3.1YM, 3.1YN, 3.1YO, 3.1YP, 3.1YQ, 3.1YR, 3.1YS, 3.1YT, 3.1YU, 3.1YV, 3.1YW, 3.1YX, 3.1YY, 3.1YZ, 3.1ZA, 3.1ZB, 3.1ZC, 3.1ZD, 3.1ZE, 3.1ZG, 3.1ZH, 3.1ZI, 3.1ZJ, 3.1ZK, 3.1ZL, 3.1ZM, 3.1ZN, 3.1ZO, 3.1ZP, 3.1ZQ, 3.1ZR, 3.1ZS, 3.1ZT, 3.1ZU, 3.1ZV, 3.1ZW, 3.1ZX, 3.1ZY, 3.1ZZ.

Chandler Signs
Brand Image Begins Here.

3201 Manor Way 214-902-2000	Dallas, TX 75235 Fax 214-902-2044
17319 San Pedro, Ste 200 210-349-3804	San Antonio, TX 78223 Fax 210-349-8724
963 Baxter Avenue, Ste 200 502-479-3075	Louisville, KY 40204 Fax 502-412-0013
2584 Sand Hill Point Circle 863-420-1100	Davenport, FL 33837 Fax 863-424-1160
37 Waterfront Park Court 800-851-7062	Dawsonville, GA 30534 Fax 210-349-8724
P.O. Box 125 206 Doral Drive 361-563-5599	Portland, TX 78374 Fax 361-643-6533
1335 Park Center Drive, UNIT C 760-967-7003	Vista, CA 92081 Fax 760-967-7033

This drawing is the property of Chandler Signs, L.P., L.L.P. and all rights to its use for the reproduction are reserved by Chandler Signs, L.P., L.L.P.

FINAL ELECTRICAL CONNECTION BY CUSTOMER

THIS SIGN IS INTENDED TO BE INSTALLED IN ACCORDANCE WITH ARTICLE 600 OF THE NATIONAL ELECTRICAL CODE AND/OR OTHER APPLICABLE LOCAL CODES. THIS INCLUDES PROPER GROUNDING & BONDING OF THE SIGN. SIGN WILL BEAR UL LABEL(S).

VICTORY PARK

Design #
610152AR18-SIGNS ONLY

Sheet 18 of 25

Location
VICTORY PARK - INDIV. SIGNS

Address
DALLAS, TX

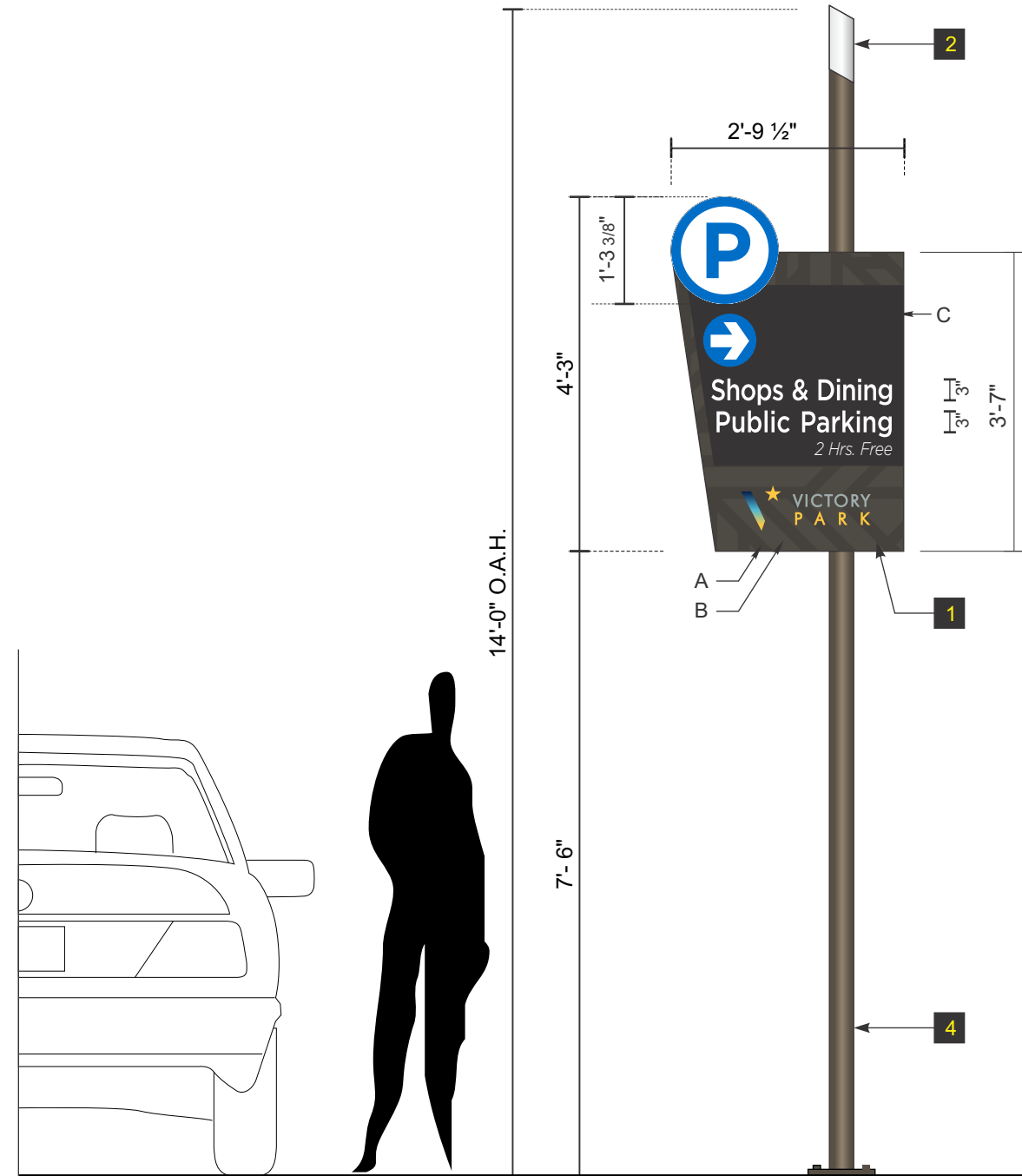
Acct. Rep. STAN MACRUM
Coordinator JAMIE MACRUM

Designer P. AGUIAR

Date 07/16/14

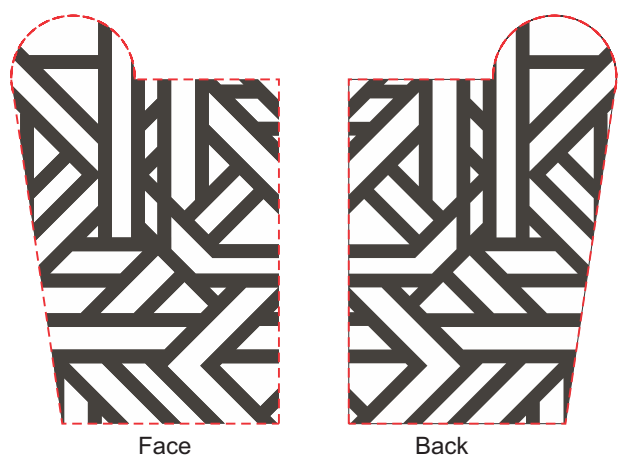
Approval / Date	
Client	
Sales	
Estimating	
Art	
Landlord	
Engineering	

Revision / Date	
R1/10/13PA	UPDATED ALL SIGN LOCATIONS & QUANTITIES.
R2/20/14PA	ADJUSTED QUANTITY OF "P" DIRECTIONAL TO (SEVEN) DELETED FROM ENTRANCE AT AREA.
R3/10/14PA	REVISED SIGN SIZES & QUANTITIES PER CUSTOMER.
R4/10/14PA	SHOWED EVERY INDIVIDUAL VARYING SIGN WITH SIDES 1 & 2.
R5/10/14PA	ALL 33 SIGNS ADJUSTED TO 10 SQ. FT. / ADDED ELEC. REQUIREMENTS FOR ALL SIGNS.
R6/20/14PA	CHANGES PER ARCHITECTURAL COMMENTS & NOTES 20015.
R7/30/14PA	ADDED CIVIL PLANS WITH ZOOMED IN SECTION VIEWS "A,B,C,D".
R8/20/14PA	ADDED CIVIL PLANS WITH ZOOMED IN SECTION VIEWS "A,B,C,D".
R9/20/14PA	ADDED CIVIL PLANS WITH ZOOMED IN SECTION VIEWS "A,B,C,D".
R10/20/14PA	ADDED CIVIL PLANS WITH ZOOMED IN SECTION VIEWS "A,B,C,D".
R11/20/14PA	ADDED CIVIL PLANS WITH ZOOMED IN SECTION VIEWS "A,B,C,D".
R12/20/14PA	ADDED CIVIL PLANS WITH ZOOMED IN SECTION VIEWS "A,B,C,D".
R13/20/14PA	ADDED CIVIL PLANS WITH ZOOMED IN SECTION VIEWS "A,B,C,D".
R14/20/14PA	ADDED CIVIL PLANS WITH ZOOMED IN SECTION VIEWS "A,B,C,D".
R15/20/14PA	ADDED CIVIL PLANS WITH ZOOMED IN SECTION VIEWS "A,B,C,D".
R16/20/14PA	ADDED CIVIL PLANS WITH ZOOMED IN SECTION VIEWS "A,B,C,D".
R17/20/14PA	ADDED CIVIL PLANS WITH ZOOMED IN SECTION VIEWS "A,B,C,D".
R18/20/14PA	ADDED CIVIL PLANS WITH ZOOMED IN SECTION VIEWS "A,B,C,D".
R19/20/14PA	ADDED CIVIL PLANS WITH ZOOMED IN SECTION VIEWS "A,B,C,D".
R20/20/14PA	ADDED CIVIL PLANS WITH ZOOMED IN SECTION VIEWS "A,B,C,D".
R21/20/14PA	ADDED CIVIL PLANS WITH ZOOMED IN SECTION VIEWS "A,B,C,D".
R22/20/14PA	ADDED CIVIL PLANS WITH ZOOMED IN SECTION VIEWS "A,B,C,D".
R23/20/14PA	ADDED CIVIL PLANS WITH ZOOMED IN SECTION VIEWS "A,B,C,D".
R24/20/14PA	ADDED CIVIL PLANS WITH ZOOMED IN SECTION VIEWS "A,B,C,D".
R25/20/14PA	ADDED CIVIL PLANS WITH ZOOMED IN SECTION VIEWS "A,B,C,D".
R26/20/14PA	ADDED CIVIL PLANS WITH ZOOMED IN SECTION VIEWS "A,B,C,D".
R27/20/14PA	ADDED CIVIL PLANS WITH ZOOMED IN SECTION VIEWS "A,B,C,D".
R28/20/14PA	ADDED CIVIL PLANS WITH ZOOMED IN SECTION VIEWS "A,B,C,D".
R29/20/14PA	ADDED CIVIL PLANS WITH ZOOMED IN SECTION VIEWS "A,B,C,D".
R30/20/14PA	ADDED CIVIL PLANS WITH ZOOMED IN SECTION VIEWS "A,B,C,D".
R31/20/14PA	ADDED CIVIL PLANS WITH ZOOMED IN SECTION VIEWS "A,B,C,D".
R32/20/14PA	ADDED CIVIL PLANS WITH ZOOMED IN SECTION VIEWS "A,B,C,D".
R33/20/14PA	ADDED CIVIL PLANS WITH ZOOMED IN SECTION VIEWS "A,B,C,D".
R34/20/14PA	ADDED CIVIL PLANS WITH ZOOMED IN SECTION VIEWS "A,B,C,D".
R35/20/14PA	ADDED CIVIL PLANS WITH ZOOMED IN SECTION VIEWS "A,B,C,D".
R36/20/14PA	ADDED CIVIL PLANS WITH ZOOMED IN SECTION VIEWS "A,B,C,D".
R37/20/14PA	ADDED CIVIL PLANS WITH ZOOMED IN SECTION VIEWS "A,B,C,D".
R38/20/14PA	ADDED CIVIL PLANS WITH ZOOMED IN SECTION VIEWS "A,B,C,D".
R39/20/14PA	ADDED CIVIL PLANS WITH ZOOMED IN SECTION VIEWS "A,B,C,D".
R40/20/14PA	ADDED CIVIL PLANS WITH ZOOMED IN SECTION VIEWS "A,B,C,D".
R41/20/14PA	ADDED CIVIL PLANS WITH ZOOMED IN SECTION VIEWS "A,B,C,D".
R42/20/14PA	ADDED CIVIL PLANS WITH ZOOMED IN SECTION VIEWS "A,B,C,D".
R43/20/14PA	ADDED CIVIL PLANS WITH ZOOMED IN SECTION VIEWS "A,B,C,D".
R44/20/14PA	ADDED CIVIL PLANS WITH ZOOMED IN SECTION VIEWS "A,B,C,D".
R45/20/14PA	ADDED CIVIL PLANS WITH ZOOMED IN SECTION VIEWS "A,B,C,D".
R46/20/14PA	ADDED CIVIL PLANS WITH ZOOMED IN SECTION VIEWS "A,B,C,D".
R47/20/14PA	ADDED CIVIL PLANS WITH ZOOMED IN SECTION VIEWS "A,B,C,D".
R48/20/14PA	ADDED CIVIL PLANS WITH ZOOMED IN SECTION VIEWS "A,B,C,D".
R49/20/14PA	ADDED CIVIL PLANS WITH ZOOMED IN SECTION VIEWS "A,B,C,D".
R50/20/14PA	ADDED CIVIL PLANS WITH ZOOMED IN SECTION VIEWS "A,B,C,D".
R51/20/14PA	ADDED CIVIL PLANS WITH ZOOMED IN SECTION VIEWS "A,B,C,D".
R52/20/14PA	ADDED CIVIL PLANS WITH ZOOMED IN SECTION VIEWS "A,B,C,D".
R53/20/14PA	ADDED CIVIL PLANS WITH ZOOMED IN SECTION VIEWS "A,B,C,D".
R54/20/14PA	ADDED CIVIL PLANS WITH ZOOMED IN SECTION VIEWS "A,B,C,D".
R55/20/14PA	ADDED CIVIL PLANS WITH ZOOMED IN SECTION VIEWS "A,B,C,D".
R56/20/14PA	ADDED CIVIL PLANS WITH ZOOMED IN SECTION VIEWS "A,B,C,D".
R57/20/14PA	ADDED CIVIL PLANS WITH ZOOMED IN SECTION VIEWS "A,B,C,D".
R58/20/14PA	ADDED CIVIL PLANS WITH ZOOMED IN SECTION VIEWS "A,B,C,D".
R59/20/14PA	ADDED CIVIL PLANS WITH ZOOMED IN SECTION VIEWS "A,B,C,D".
R60/20/14PA	ADDED CIVIL PLANS WITH ZOOMED IN SECTION VIEWS "A,B,C,D".
R61/20/14PA	ADDED CIVIL PLANS WITH ZOOMED IN SECTION VIEWS "A,B,C,D".
R62/20/14PA	ADDED CIVIL PLANS WITH ZOOMED IN SECTION VIEWS "A,B,C,D".
R63/20/14PA	ADDED CIVIL PLANS WITH ZOOMED IN SECTION VIEWS "A,B,C,D".
R64/20/14PA	ADDED CIVIL PLANS WITH ZOOMED IN SECTION VIEWS "A,B,C,D".
R65/20/14PA	ADDED CIVIL PLANS WITH ZOOMED IN SECTION VIEWS "A,B,C,D".
R66/20/14PA	ADDED CIVIL PLANS WITH ZOOMED IN SECTION VIEWS "A,B,C,D".
R67/20/14PA	ADDED CIVIL PLANS WITH ZOOMED IN SECTION VIEWS "A,B,C,D".
R68/20/14PA	ADDED CIVIL PLANS WITH ZOOMED IN SECTION VIEWS "A,B,C,D".
R69/20/14PA	ADDED CIVIL PLANS WITH ZOOMED IN SECTION VIEWS "A,B,C,D".
R70/20/14PA	ADDED CIVIL PLANS WITH ZOOMED IN SECTION VIEWS "A,B,C,D".
R71/20/14PA	ADDED CIVIL PLANS WITH ZOOMED IN SECTION VIEWS "A,B,C,D".
R72/20/14PA	ADDED CIVIL PLANS WITH ZOOMED IN SECTION VIEWS "A,B,C,D".
R73/20/14PA	ADDED CIVIL PLANS WITH ZOOMED IN SECTION VIEWS "A,B,C,D".
R74/20/14PA	ADDED CIVIL PLANS WITH ZOOMED IN SECTION VIEWS "A,B,C,D".
R75/20/14PA	ADDED CIVIL PLANS WITH ZOOMED IN SECTION VIEWS "A,B,C,D".
R76/20/14PA	ADDED CIVIL PLANS WITH ZOOMED IN SECTION VIEWS "A,B,C,D".
R77/20/14PA	ADDED CIVIL PLANS WITH ZOOMED IN SECTION VIEWS "A,B,C,D".
R78/20/14PA	ADDED CIVIL PLANS WITH ZOOMED IN SECTION VIEWS "A,B,C,D".
R79/20/14PA	ADDED CIVIL PLANS WITH ZOOMED IN SECTION VIEWS "A,B,C,D".
R80/20/14PA	ADDED CIVIL PLANS WITH ZOOMED IN SECTION VIEWS "A,B,C,D".
R81/20/14PA	ADDED CIVIL PLANS WITH ZOOMED IN SECTION VIEWS "A,B,C,D".
R82/20/14PA	ADDED CIVIL PLANS WITH ZOOMED IN SECTION VIEWS "A,B,C,D".
R83/20/14PA	ADDED CIVIL PLANS WITH ZOOMED IN SECTION VIEWS "A,B,C,D".
R84/20/14PA	ADDED CIVIL PLANS WITH ZOOMED IN SECTION VIEWS "A,B,C,D".
R85/20/14PA	ADDED CIVIL PLANS WITH ZOOMED IN SECTION VIEWS "A,B,C,D".
R86/20/14PA	ADDED CIVIL PLANS WITH ZOOMED IN SECTION VIEWS "A,B,C,D".
R87/20/14PA	ADDED CIVIL PLANS WITH ZOOMED IN SECTION VIEWS "A,B,C,D".
R88/20/14PA	ADDED CIVIL PLANS WITH ZOOMED IN SECTION VIEWS "A,B,C,D".
R89/20/14PA	ADDED CIVIL PLANS WITH ZOOMED IN SECTION VIEWS "A,B,C,D".
R90/20/14PA	ADDED CIVIL PLANS WITH ZOOMED IN SECTION VIEWS "A,B,C,D".
R91/20/14PA	ADDED CIVIL PLANS WITH ZOOMED IN SECTION VIEWS "A,B,C,D".
R92/20/14PA	ADDED CIVIL PLANS WITH ZOOMED IN SECTION VIEWS "A,B,C,D".
R93/20/14PA	ADDED CIVIL PLANS WITH ZOOMED IN SECTION VIEWS "A,B,C,D".
R94/20/14PA	ADDED CIVIL PLANS WITH ZOOMED IN SECTION VIEWS "A,B,C,D".
R95/20/14PA	ADDED CIVIL PLANS WITH ZOOMED IN SECTION VIEWS "A,B,C,D".
R96/20/14PA	ADDED CIVIL PLANS WITH ZOOMED IN SECTION VIEWS "A,B,C,D".
R97/20/14PA	ADDED CIVIL PLANS WITH ZOOMED IN SECTION VIEWS "A,B,C,D".
R98/20/14PA	ADDED CIVIL PLANS WITH ZOOMED IN SECTION VIEWS "A,B,C,D".
R99/20/14PA	ADDED CIVIL PLANS WITH ZOOMED IN SECTION VIEWS "A,B,C,D".
R100/20/14PA	ADDED CIVIL PLANS WITH ZOOMED IN SECTION VIEWS "A,B,C,D".

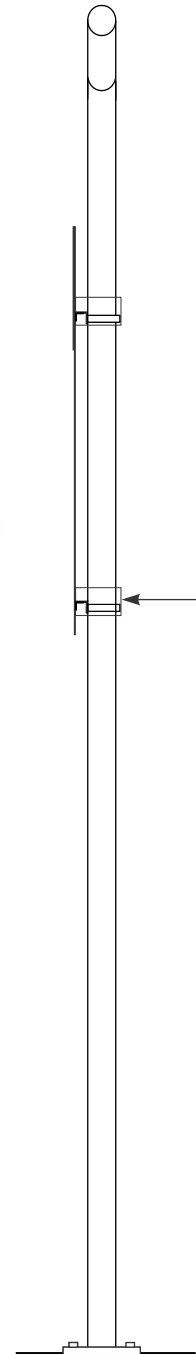


Pole mounted single panel sign intended for locations requiring only 1 or 2 messages. Sign relies upon 3M reflective vinyl for its visibility at night.

1. .125" Plate stock panel, painted finish.
A). Background Painted Medium Bronze Metallic Gloss.
B). Pattern Painted Medium Bronze Metallic Matte.
C). PMS Black Satin
To have Reflective 3M #680-10 White vinyl copy and 3M #680-76 Light Blue arrow & "P" graphics.
"V" & "★" Logo to be 1st. surface applied Digitally Printed Vinyl.
Backside of panel to be painted Medium Bronze Metallic Gloss.
Backside Pattern Painted Medium Bronze Metallic Matte.
2. 3" I.D. X .216" Wall primary pole, top capped and ground smooth with non-illuminated angled profile White painted finial.
3. Sign secured to post with Z strips and Band-it type hardware. Use decorative escutcheon covers at back over straps painted to match: P.1 - Tiger Drylac Powdercoat 038/60060 Med. Bronze Metallic.
4. Steel Support to be primed & painted to match: P.1 - Tiger Drylac Powdercoat 038/60060 Med. Bronze Metallic.



GRID PATTERN LAYOUT
Composed per Stantec Artwork



End View



Backside

3.3a SIGN (NON-ILLUM) - ELEVATION

QTY. ONE (1) REQUIRED - MANUFACTURE AND INSTALL

SCALE: 1/2" = 1'-0"
SQ. FT.: 9.72 EA.



3201 Manor Way 214-902-2000	Dallas, TX 75235 Fax 214-902-2044
17319 San Pedro, Ste 200 502-479-3075	San Antonio, TX 78223 Fax 210-349-8724
963 Baxter Avenue, Ste 200 863-420-1100	Louisville, KY 40204 Fax 502-412-0013
2584 Sand Hill Point Circle 800-851-7062	Davenport, FL 33837 Fax 863-424-1160
P.O. Box 125 206 Doral Drive 361-563-5599	Dawsonville, GA 30534 Fax 210-349-8724
1335 Park Center Drive, UNIT C 760-967-7003	Portland, TX 78374 Fax 361-643-6533
	Vista, CA 92081 Fax 760-967-7033

This drawing is the property of Chandler Signs, L.P., L.L.P. and all rights to its use for the reproduction are reserved by Chandler Signs, L.P., L.L.P.

FINAL ELECTRICAL CONNECTION BY CUSTOMER

THIS SIGN IS INTENDED TO BE INSTALLED IN ACCORDANCE WITH ARTICLE 800 OF THE NATIONAL ELECTRICAL CODE AND/OR OTHER APPLICABLE LOCAL CODES. THIS INCLUDES PROPER GROUNDING & BONDING OF THE SIGN. SIGN WILL BEAR UL LABEL(S).

VICTORY PARK

Design #	610152AR18-SIGNS ONLY
Sheet	19 of 25
Location	VICTORY PARK - INDIV. SIGNS
Address	DALLAS, TX
Acct. Rep. Coordinator	STAN MACRUM JAMIE MACRUM
Designer	P. AGUIAR
Date	07/16/14
Approval / Date	
Client	
Sales	
Estimating	
Art	
Landlord	
Engineering	

Revision / Date
R1/10/13P1. UPDATED ALL SIGN LOCATIONS & QUANTITIES.
R2/20/14P1. ADJUSTED QUANTITY OF "P" DIRECTIONAL TO (SEVEN) DELETED FROM ENTRANCE #1 AREA.
R3/10/14P1. REVISED SIGN SIZES & QUANTITIES PER CUSTOMER.
R4/10/14P1. SHOWED EVERY INDIVIDUAL VARYING SIGN WITH SIDES 1 & 2.
R5/11/14P1. ALL "P" SIGNS ADJUSTED TO 10 SQ. FT. / ADDED ELEC. REQUIREMENTS FOR ALL SIGNS.
R6/20/14P1. CHANGES PER ARCHITECTURAL COMMENTS & NOTES 200/15.
R7/3/14P1. ADDED CIVIL PLANS WITH ZOOMED IN SECTION VIEWS "A,B,C,D".
R8/20/14P1. THROUGH THE SIGNAGE TO "P" DIRECTIONAL TO BE REDUCED TO CLEARANCE HEIGHT OF 3.3 SIGNS FROM 6" TO 7.5".
R9/17/14P1. CHANGED 3.2M TO 3.2M. CHANGED 3.2M TO 3.2M & ALL DIRECTIONAL COPY ACCORDINGLY ADDED 1 MORE "P" SIGN. 3.2M & 3.2M.
R10/11/14P1. CORRECTED CALL OUT LOCATIONS FOR SIGNS 3.2M & 3.2M AT SWP SECTION "B" CORRECTED CALL OUT FOR 3.2M ADDED DISTING. TO SIGN QUANTITY REFERENCE SHEET.
R11/10/14P1. REVISED SIGN SIZE TO A REGULATED BY CLEARANCE FROM GRADE FOR ALL SIGNS 3.1, 3.2.
R12/10/14P1. REVISED ALL COPY ON ALL SIGNS READING "SHOP PARKING" TO BE "SHOPS & DINING PUBLIC PARKING" AND "2 HRS. FREE" TO BE "2 HRS. FREE" AND "VICTORY PARK" TO BE "VICTORY PARK".
R13/10/14P1. REVISED ALL VICTORY LOGOS TO HAVE COLOR GRADIENT. ALL 1.1C, 1.2A, 1.2C SPECIFIC COLORS FOR ALL SIGNS. INCLUDES: REVISED SIGN DIRECTION & POSITIONING OF SIGN 1.1C, 1.2A, 1.2C.
R14/10/14P1. ADDED IMAGES OF SIGN NEXT TO IDENTIFIERS ON SITE PLAN.
R15/10/14P1. UPDATED ALL QUANTITIES OF DISTRICT ID. SIGNS "1.4.1", "1.4.2" & "1.3.2".
R16/10/14P1. UPDATED WITH COMMENTS FROM STANTEC.
R17/10/14P1. ADJUSTED THE ANGLE OF THE LOCAL STEEL. USE PROTECTING EDGE "P" AT ALL CLEARANCE FROM GRADE. SIGNS "1.1A, 1.1B, 1.2A, 1.2B, 1.2C, 1.2D, 1.2E, 1.2F, 1.2G, 1.2H, 1.2I, 1.2J, 1.2K, 1.2L, 1.2M, 1.2N, 1.2O, 1.2P, 1.2Q, 1.2R, 1.2S, 1.2T, 1.2U, 1.2V, 1.2W, 1.2X, 1.2Y, 1.2Z, 1.3A, 1.3B, 1.3C, 1.3D, 1.3E, 1.3F, 1.3G, 1.3H, 1.3I, 1.3J, 1.3K, 1.3L, 1.3M, 1.3N, 1.3O, 1.3P, 1.3Q, 1.3R, 1.3S, 1.3T, 1.3U, 1.3V, 1.3W, 1.3X, 1.3Y, 1.3Z, 1.4A, 1.4B, 1.4C, 1.4D, 1.4E, 1.4F, 1.4G, 1.4H, 1.4I, 1.4J, 1.4K, 1.4L, 1.4M, 1.4N, 1.4O, 1.4P, 1.4Q, 1.4R, 1.4S, 1.4T, 1.4U, 1.4V, 1.4W, 1.4X, 1.4Y, 1.4Z, 1.5A, 1.5B, 1.5C, 1.5D, 1.5E, 1.5F, 1.5G, 1.5H, 1.5I, 1.5J, 1.5K, 1.5L, 1.5M, 1.5N, 1.5O, 1.5P, 1.5Q, 1.5R, 1.5S, 1.5T, 1.5U, 1.5V, 1.5W, 1.5X, 1.5Y, 1.5Z, 1.6A, 1.6B, 1.6C, 1.6D, 1.6E, 1.6F, 1.6G, 1.6H, 1.6I, 1.6J, 1.6K, 1.6L, 1.6M, 1.6N, 1.6O, 1.6P, 1.6Q, 1.6R, 1.6S, 1.6T, 1.6U, 1.6V, 1.6W, 1.6X, 1.6Y, 1.6Z, 1.7A, 1.7B, 1.7C, 1.7D, 1.7E, 1.7F, 1.7G, 1.7H, 1.7I, 1.7J, 1.7K, 1.7L, 1.7M, 1.7N, 1.7O, 1.7P, 1.7Q, 1.7R, 1.7S, 1.7T, 1.7U, 1.7V, 1.7W, 1.7X, 1.7Y, 1.7Z, 1.8A, 1.8B, 1.8C, 1.8D, 1.8E, 1.8F, 1.8G, 1.8H, 1.8I, 1.8J, 1.8K, 1.8L, 1.8M, 1.8N, 1.8O, 1.8P, 1.8Q, 1.8R, 1.8S, 1.8T, 1.8U, 1.8V, 1.8W, 1.8X, 1.8Y, 1.8Z, 1.9A, 1.9B, 1.9C, 1.9D, 1.9E, 1.9F, 1.9G, 1.9H, 1.9I, 1.9J, 1.9K, 1.9L, 1.9M, 1.9N, 1.9O, 1.9P, 1.9Q, 1.9R, 1.9S, 1.9T, 1.9U, 1.9V, 1.9W, 1.9X, 1.9Y, 1.9Z, 2.0A, 2.0B, 2.0C, 2.0D, 2.0E, 2.0F, 2.0G, 2.0H, 2.0I, 2.0J, 2.0K, 2.0L, 2.0M, 2.0N, 2.0O, 2.0P, 2.0Q, 2.0R, 2.0S, 2.0T, 2.0U, 2.0V, 2.0W, 2.0X, 2.0Y, 2.0Z, 2.1A, 2.1B, 2.1C, 2.1D, 2.1E, 2.1F, 2.1G, 2.1H, 2.1I, 2.1J, 2.1K, 2.1L, 2.1M, 2.1N, 2.1O, 2.1P, 2.1Q, 2.1R, 2.1S, 2.1T, 2.1U, 2.1V, 2.1W, 2.1X, 2.1Y, 2.1Z, 2.2A, 2.2B, 2.2C, 2.2D, 2.2E, 2.2F, 2.2G, 2.2H, 2.2I, 2.2J, 2.2K, 2.2L, 2.2M, 2.2N, 2.2O, 2.2P, 2.2Q, 2.2R, 2.2S, 2.2T, 2.2U, 2.2V, 2.2W, 2.2X, 2.2Y, 2.2Z, 2.3A, 2.3B, 2.3C, 2.3D, 2.3E, 2.3F, 2.3G, 2.3H, 2.3I, 2.3J, 2.3K, 2.3L, 2.3M, 2.3N, 2.3O, 2.3P, 2.3Q, 2.3R, 2.3S, 2.3T, 2.3U, 2.3V, 2.3W, 2.3X, 2.3Y, 2.3Z, 2.4A, 2.4B, 2.4C, 2.4D, 2.4E, 2.4F, 2.4G, 2.4H, 2.4I, 2.4J, 2.4K, 2.4L, 2.4M, 2.4N, 2.4O, 2.4P, 2.4Q, 2.4R, 2.4S, 2.4T, 2.4U, 2.4V, 2.4W, 2.4X, 2.4Y, 2.4Z, 2.5A, 2.5B, 2.5C, 2.5D, 2.5E, 2.5F, 2.5G, 2.5H, 2.5I, 2.5J, 2.5K, 2.5L, 2.5M, 2.5N, 2.5O, 2.5P, 2.5Q, 2.5R, 2.5S, 2.5T, 2.5U, 2.5V, 2.5W, 2.5X, 2.5Y, 2.5Z, 2.6A, 2.6B, 2.6C, 2.6D, 2.6E, 2.6F, 2.6G, 2.6H, 2.6I, 2.6J, 2.6K, 2.6L, 2.6M, 2.6N, 2.6O, 2.6P, 2.6Q, 2.6R, 2.6S, 2.6T, 2.6U, 2.6V, 2.6W, 2.6X, 2.6Y, 2.6Z, 2.7A, 2.7B, 2.7C, 2.7D, 2.7E, 2.7F, 2.7G, 2.7H, 2.7I, 2.7J, 2.7K, 2.7L, 2.7M, 2.7N, 2.7O, 2.7P, 2.7Q, 2.7R, 2.7S, 2.7T, 2.7U, 2.7V, 2.7W, 2.7X, 2.7Y, 2.7Z, 2.8A, 2.8B, 2.8C, 2.8D, 2.8E, 2.8F, 2.8G, 2.8H, 2.8I, 2.8J, 2.8K, 2.8L, 2.8M, 2.8N, 2.8O, 2.8P, 2.8Q, 2.8R, 2.8S, 2.8T, 2.8U, 2.8V, 2.8W, 2.8X, 2.8Y, 2.8Z, 2.9A, 2.9B, 2.9C, 2.9D, 2.9E, 2.9F, 2.9G, 2.9H, 2.9I, 2.9J, 2.9K, 2.9L, 2.9M, 2.9N, 2.9O, 2.9P, 2.9Q, 2.9R, 2.9S, 2.9T, 2.9U, 2.9V, 2.9W, 2.9X, 2.9Y, 2.9Z, 3.0A, 3.0B, 3.0C, 3.0D, 3.0E, 3.0F, 3.0G, 3.0H, 3.0I, 3.0J, 3.0K, 3.0L, 3.0M, 3.0N, 3.0O, 3.0P, 3.0Q, 3.0R, 3.0S, 3.0T, 3.0U, 3.0V, 3.0W, 3.0X, 3.0Y, 3.0Z, 3.1A, 3.1B, 3.1C, 3.1D, 3.1E, 3.1F, 3.1G, 3.1H, 3.1I, 3.1J, 3.1K, 3.1L, 3.1M, 3.1N, 3.1O, 3.1P, 3.1Q, 3.1R, 3.1S, 3.1T, 3.1U, 3.1V, 3.1W, 3.1X, 3.1Y, 3.1Z, 3.2A, 3.2B, 3.2C, 3.2D, 3.2E, 3.2F, 3.2G, 3.2H, 3.2I, 3.2J, 3.2K, 3.2L, 3.2M, 3.2N, 3.2O, 3.2P, 3.2Q, 3.2R, 3.2S, 3.2T, 3.2U, 3.2V, 3.2W, 3.2X, 3.2Y, 3.2Z, 3.3A, 3.3B, 3.3C, 3.3D, 3.3E, 3.3F, 3.3G, 3.3H, 3.3I, 3.3J, 3.3K, 3.3L, 3.3M, 3.3N, 3.3O, 3.3P, 3.3Q, 3.3R, 3.3S, 3.3T, 3.3U, 3.3V, 3.3W, 3.3X, 3.3Y, 3.3Z, 3.4A, 3.4B, 3.4C, 3.4D, 3.4E, 3.4F, 3.4G, 3.4H, 3.4I, 3.4J, 3.4K, 3.4L, 3.4M, 3.4N, 3.4O, 3.4P, 3.4Q, 3.4R, 3.4S, 3.4T, 3.4U, 3.4V, 3.4W, 3.4X, 3.4Y, 3.4Z, 3.5A, 3.5B, 3.5C, 3.5D, 3.5E, 3.5F, 3.5G, 3.5H, 3.5I, 3.5J, 3.5K, 3.5L, 3.5M, 3.5N, 3.5O, 3.5P, 3.5Q, 3.5R, 3.5S, 3.5T, 3.5U, 3.5V, 3.5W, 3.5X, 3.5Y, 3.5Z, 3.6A, 3.6B, 3.6C, 3.6D, 3.6E, 3.6F, 3.6G, 3.6H, 3.6I, 3.6J, 3.6K, 3.6L, 3.6M, 3.6N, 3.6O, 3.6P, 3.6Q, 3.6R, 3.6S, 3.6T, 3.6U, 3.6V, 3.6W, 3.6X, 3.6Y, 3.6Z, 3.7A, 3.7B, 3.7C, 3.7D, 3.7E, 3.7F, 3.7G, 3.7H, 3.7I, 3.7J, 3.7K, 3.7L, 3.7M, 3.7N, 3.7O, 3.7P, 3.7Q, 3.7R, 3.7S, 3.7T, 3.7U, 3.7V, 3.7W, 3.7X, 3.7Y, 3.7Z, 3.8A, 3.8B, 3.8C, 3.8D, 3.8E, 3.8F, 3.8G, 3.8H, 3.8I, 3.8J, 3.8K, 3.8L, 3.8M, 3.8N, 3.8O, 3.8P, 3.8Q, 3.8R, 3.8S, 3.8T, 3.8U, 3.8V, 3.8W, 3.8X, 3.8Y, 3.8Z, 3.9A, 3.9B, 3.9C, 3.9D, 3.9E, 3.9F, 3.9G, 3.9H, 3.9I, 3.9J, 3.9K, 3.9L, 3.9M, 3.9N, 3.9O, 3.9P, 3.9Q, 3.9R, 3.9S, 3.9T, 3.9U, 3.9V, 3.9W, 3.9X, 3.9Y, 3.9Z, 4.0A, 4.0B, 4.0C, 4.0D, 4.0E, 4.0F, 4.0G, 4.0H, 4.0I, 4.0J, 4.0K, 4.0L, 4.0M, 4.0N, 4.0O, 4.0P, 4.0Q, 4.0R, 4.0S, 4.0T, 4.0U, 4.0V, 4.0W, 4.0X, 4.0Y, 4.0Z, 4.1A, 4.1B, 4.1C, 4.1D, 4.1E, 4.1F, 4.1G, 4.1H, 4.1I, 4.1J, 4.1K, 4.1L, 4.1M, 4.1N, 4.1O, 4.1P, 4.1Q, 4.1R, 4.1S, 4.1T, 4.1U, 4.1V, 4.1W, 4.1X, 4.1Y, 4.1Z, 4.2A, 4.2B, 4.2C, 4.2D, 4.2E, 4.2F, 4.2G, 4.2H, 4.2I, 4.2J, 4.2K, 4.2L, 4.2M, 4.2N, 4.2O, 4.2P, 4.2Q, 4.2R, 4.2S, 4.2T, 4.2U, 4.2V, 4.2W, 4.2X, 4.2Y, 4.2Z, 4.3A, 4.3B, 4.3C, 4.3D, 4.3E, 4.3F, 4.3G, 4.3H, 4.3I, 4.3J, 4.3K, 4.3L, 4.3M, 4.3N, 4.3O, 4.3P, 4.3Q, 4.3R, 4.3S, 4.3T, 4.3U, 4.3V, 4.3W, 4.3X, 4.3Y, 4.3Z, 4.4A, 4.4B, 4.4C, 4.4D, 4.4E, 4.4F, 4.4G, 4.4H, 4.4I, 4.4J, 4.4K, 4.4L, 4.4M, 4.4N, 4.4O, 4.4P, 4.4Q, 4.4R, 4.4S, 4.4T, 4.4U, 4.4V, 4.4W, 4.4X, 4.4Y, 4.4Z, 4.5A, 4.5B, 4.5C, 4.5D, 4.5E, 4.5F, 4.5G, 4.5H, 4.5I, 4.5J, 4.5K, 4.5L, 4.5M, 4.5N, 4.5O, 4.5P, 4.5Q, 4.5R, 4.5S, 4.5T, 4.5U, 4.5V, 4.5W, 4.5X, 4.5Y, 4.5Z, 4.6A, 4.6B, 4.6C, 4.6D, 4.6E, 4.6F, 4.6G, 4.6H, 4.6I, 4.6J, 4.6K, 4.6L, 4.6M, 4.6N, 4.6O, 4.6P, 4.6Q, 4.6R, 4.6S, 4.6T, 4.6U, 4.6V, 4.6W, 4.6X, 4.6Y, 4.6Z, 4.7A, 4.7B, 4.7C, 4.7D, 4.7E, 4.7F, 4.7G, 4.7H, 4.7I, 4.7J, 4.7K, 4.7L, 4.7M, 4.7N, 4.7O, 4.7P, 4.7Q, 4.7R, 4.7S, 4.7T, 4.7U, 4.7V, 4.7W, 4.7X, 4.7Y, 4.7Z, 4.8A, 4.8B, 4.8C, 4.8D, 4.8E, 4.8F, 4.8G, 4.8H, 4.8I, 4.8J, 4.8K, 4.8L, 4.8M, 4.8N, 4.8O, 4.8P, 4.8Q, 4.8R, 4.8S, 4.8T, 4.8U, 4.8V, 4.8W, 4.8X, 4.8Y, 4.8Z, 4.9A, 4.9B, 4.9C, 4.9D, 4.9E, 4.9F, 4.9G, 4.9H, 4.9I, 4.9J, 4.9K, 4.9L, 4.9M, 4.9N, 4.9O, 4.9P, 4.9Q, 4.9R, 4.9S, 4.9T, 4.9U, 4.9V, 4.9W, 4.9X, 4.9Y, 4.9Z, 5.0A, 5.0B, 5.0C, 5.0D, 5.0E, 5.0F, 5.0G, 5.0H, 5.0I, 5.0J, 5.0K, 5.0L, 5.0M, 5.0N, 5.0O, 5.0P, 5.0Q, 5.0R, 5.0S, 5.0T, 5.0U, 5.0V, 5.0W, 5.0X, 5.0Y, 5.0Z, 5.1A, 5.1B, 5.1C, 5.1D, 5.1E, 5.1F, 5.1G, 5.1H, 5.1I, 5.1J, 5.1K, 5.1L, 5.1M, 5.1N, 5.1O, 5.1P, 5.1Q, 5.1R, 5.1S, 5.1T, 5.1U, 5.1V, 5.1W, 5.1X, 5.1Y, 5.1Z, 5.2A, 5.2B, 5.2C, 5.2D, 5.2E, 5.2F, 5.2G, 5.2H, 5.2I, 5.2J, 5.2K, 5.2L, 5.2M, 5.2N, 5.2O, 5.2P, 5.2Q, 5.2R, 5.2S, 5.2T, 5.2U, 5.2V, 5.2W, 5.2X, 5.2Y, 5.2Z, 5.3A, 5.3B, 5.3C, 5.3D, 5.3E, 5.3F, 5.3G, 5.3H, 5.3I, 5.3J, 5.3K, 5.3L, 5.3M, 5.3N, 5.3O, 5.3P, 5.3Q, 5.3R, 5.3S, 5.3T, 5.3U, 5.3V, 5.3W, 5.3X, 5.3Y, 5.3Z, 5.4A, 5.4B, 5.4C, 5.4D, 5.4E, 5.4F, 5.4G, 5.4H, 5.4I, 5.4J, 5.4K, 5.4L, 5.4M, 5.4N, 5.4O, 5.4P, 5.4Q, 5.4R, 5.4S, 5.4T, 5.4U, 5.4V, 5.4W, 5.4X, 5.4Y, 5.4Z, 5.5A, 5.5B, 5.5C, 5.5D, 5.5E, 5.5F, 5.5G, 5.5H, 5.5I, 5.5J, 5.5K, 5.5L, 5.5M, 5.5N, 5.5O, 5.5P, 5.5Q, 5.5R, 5.5S, 5.5T, 5.5U, 5.5V, 5.5W, 5.5X, 5.5Y, 5.5Z, 5.6A, 5.6B, 5.6C, 5.6D, 5.6E, 5.6F, 5.6G, 5.6H, 5.6I, 5.6J, 5.6K, 5.6L, 5.6M, 5.6N, 5.6O, 5.6P, 5.6Q, 5.6R, 5.6S, 5.6T, 5.6U, 5.6V, 5.6W, 5.6X, 5.6Y, 5.6Z, 5.7A, 5.7B, 5.7C, 5.7D, 5.7E, 5.7F, 5.7G, 5.7H, 5.7I, 5.7J, 5.7K, 5.7L, 5.7M, 5.7N, 5.7O, 5.7P, 5.7Q, 5.7R, 5.7S, 5.7T, 5.7U, 5.7V, 5.7W, 5.7X, 5.7Y, 5.7Z, 5.8A, 5.8B, 5.8C, 5.8D, 5.8E, 5.8F, 5.8G, 5.8H, 5.8I, 5.8J, 5.8K, 5.8L, 5.8M, 5.8N, 5.8O, 5.8P, 5.8Q, 5.8R, 5.8S, 5.8T, 5.8U, 5.8V, 5.8W, 5.8X, 5.8Y, 5.8Z, 5.9A, 5.9B, 5.9C, 5.9D, 5.9E, 5.9F, 5.9G, 5.9H, 5.9I, 5.9J, 5.9K, 5.9L, 5.9M, 5.9N, 5.9O, 5.9P, 5.9Q, 5.9R, 5.9S, 5.9T, 5.9U, 5.9V, 5.9W, 5.9X, 5.9Y, 5.9Z, 6.0A, 6.0B, 6.0C, 6.0D, 6.0E, 6.0F, 6.0G, 6.0H, 6.0I, 6.0J, 6.0K, 6.0L, 6.0M, 6.0N, 6.0O, 6.0P, 6.0Q, 6.0R, 6.0S, 6.0T, 6.0U, 6.0V, 6.0W, 6.0X, 6.0Y, 6.0Z, 6.1A, 6.1B, 6.1C, 6.1D, 6.1E, 6.1F, 6.1G, 6.1H, 6.1I, 6.1J, 6.1K, 6.1L, 6.1M, 6.1N, 6.1O, 6.1P, 6.1Q, 6.1R, 6.1S, 6.1T, 6.1U, 6.1V, 6.1W, 6.1X, 6.1Y, 6.1Z, 6.2A, 6.2B, 6.2C, 6.2D, 6.2E, 6.2F, 6.2G, 6.2H, 6.2I, 6.2J, 6.2K, 6.2L, 6.2M, 6.2N, 6.2O, 6.2P, 6.2Q, 6.2R, 6.2S, 6.2T, 6.2U, 6.2V, 6.2W, 6.2X, 6.2Y, 6.2Z, 6.3A, 6.3B, 6.3C, 6.3D, 6.3E, 6.3F, 6.3G, 6.3H, 6.3I, 6.3J, 6.3K, 6.3L, 6.3M, 6.3N, 6.3O, 6.3P, 6.3Q, 6.3R, 6.3S, 6.3T, 6.3U, 6.3V, 6.3W, 6.3X, 6.3Y, 6.3Z, 6.4A, 6.4B, 6.4C, 6.4D, 6.4E, 6.4F, 6.4G, 6.4H, 6.4I, 6.4J, 6.4K, 6.4L, 6.4M, 6.4N, 6.4O, 6.4P, 6.4Q, 6.4R, 6.4S, 6.4T, 6.4U, 6.4V, 6.4W, 6.4X, 6.4Y, 6.4Z, 6.5A, 6.5B, 6.5C, 6.5D, 6.5E, 6.5F, 6.5G, 6.5H, 6.5I, 6.5J, 6.5K, 6.5L, 6.5M, 6.5N, 6.5O, 6.5P, 6.5Q, 6.5R, 6.5S, 6.5T, 6.5U, 6.5V, 6.5W, 6.5X, 6.5Y, 6.5Z, 6.6A, 6.6B, 6.6C, 6.6D, 6.6E, 6.6F, 6.6G, 6.6H, 6.6I, 6.6J, 6.6K, 6.6L, 6.6M, 6.6N, 6.6O, 6.6P, 6.6Q, 6.6R, 6.6S, 6.6T, 6.6U, 6.6V, 6.6W, 6.6X, 6.6Y, 6.6Z, 6.7A, 6.7B, 6.7C, 6.7D, 6.7E, 6.7F, 6.7G, 6.7H, 6.7I, 6.7J, 6.7K, 6.7L, 6.7M, 6.7N, 6.7O, 6.7P, 6.7Q, 6.7R, 6.7S, 6.7T, 6.7U, 6.7V, 6.7W, 6.7X, 6.7Y, 6.7Z, 6.8A, 6.8B, 6.8C, 6.8D, 6.8E, 6.8F, 6.8G, 6.8H, 6.8I, 6.8J, 6.8K, 6.8L, 6.8M, 6.8N, 6.8O, 6.8P, 6.8Q, 6.8R, 6.8S, 6.8T, 6.8U, 6.8V, 6.8W, 6.8X, 6.8Y, 6.8Z, 6.9A, 6.9B, 6.9C, 6.9D, 6.9E, 6.9F, 6.9G, 6.9H, 6.9I, 6.9J, 6.9K, 6.9L, 6.9M, 6.9N, 6.9O, 6.9P, 6.9Q, 6.9R, 6.9S, 6.9T, 6.9U, 6.9V, 6.9W, 6.9X, 6.9Y, 6.9Z, 7.0A, 7.0B, 7.0C, 7.0D, 7.0E, 7.0F, 7.0G, 7.0H, 7.0I, 7.0J, 7.0K, 7.0L, 7.0M, 7.0N, 7.0O, 7.0P, 7.0Q, 7.0R, 7.0S, 7.0T, 7.0U, 7.0V, 7.0W, 7.0X, 7.0Y, 7.0Z, 7.1A, 7.1B, 7.1C, 7.1D, 7.1E, 7.1F, 7.1G, 7.1H, 7.1I, 7.1J, 7.1K, 7.1L, 7.1M, 7.1N, 7.1O, 7.1P, 7.1Q, 7.1R, 7.1S, 7.1T, 7.1U, 7.1V, 7.1W, 7.1X, 7.1Y, 7.1Z, 7.2A, 7.2B, 7.2C, 7.2D, 7.2E, 7.2F, 7.2G, 7.2H, 7.2I, 7.2J, 7.2K, 7.2L, 7.2M, 7.2N, 7.2O, 7.2P, 7.2Q, 7.2R, 7.2S, 7.2T, 7.2U, 7.2V, 7.2W, 7.2X, 7.2Y, 7.2Z, 7.3A, 7.3B, 7.3C, 7.3D, 7.3E, 7.3F, 7.3G, 7.3H, 7.3I, 7.3J, 7.3K, 7.3L, 7.3M, 7.3N, 7.3O, 7.3P, 7.3Q, 7.3R, 7.3S, 7.3T, 7.3U, 7.3V, 7.3W, 7.3X, 7.3Y, 7.3Z, 7.4A, 7.4B, 7.4C, 7.4D, 7.4E, 7.4F, 7.4G, 7.4H, 7.4I, 7.4J, 7.4K, 7.4L, 7.4M, 7.4N, 7.4O, 7.4P, 7.4Q, 7.4R, 7.4S, 7.4T, 7.4U, 7.4V, 7.4W, 7.4X, 7.4Y, 7.4Z, 7.5A, 7.5B, 7.5C, 7.5D, 7.5E, 7.5F, 7.5G, 7.5H, 7.5I, 7.5J, 7.5K, 7.5L, 7.5M, 7.5N, 7.5O, 7.5P, 7.5Q, 7.5R, 7.5S, 7.5T, 7.5U, 7.5V, 7.5W, 7.5X, 7.5Y, 7.5Z, 7.6A, 7.6B, 7.6C, 7.6D, 7.6E, 7.6F, 7.6G, 7.6H, 7.6I, 7.6J, 7.6K, 7.6L, 7.6M, 7.6N, 7.6O, 7.6P, 7.6Q, 7.6R, 7.6S, 7.6T, 7.6U, 7.6V, 7.6W, 7.6X, 7.6Y, 7.6Z, 7.7A, 7.7B, 7.7C, 7.7D, 7.7E, 7.7F, 7.7G, 7.7H, 7.7I, 7.7J, 7.7K, 7.7L, 7.7M, 7.7N, 7.7O, 7.7P, 7.7Q, 7.7R, 7.7S, 7.7T, 7.7U, 7.7V, 7.7W, 7.7X, 7.7Y, 7.7Z, 7.8A, 7.8B, 7.8C, 7.8D, 7.8E, 7.8F, 7.8G, 7.8H, 7.8I, 7.8J, 7.8K, 7.8L, 7.8M, 7.8N, 7.8O, 7.8P, 7.8Q, 7.8R, 7.8S, 7.8T, 7.8U, 7.8V, 7.8W, 7.8X, 7.8Y, 7.8Z, 7.9A, 7.9B, 7.9C, 7.9D, 7.9E, 7.9F, 7.9G, 7.9H, 7.9I, 7.9J, 7.9K, 7.9L, 7.9M, 7.9N, 7.9O, 7.9P, 7.9Q, 7.9R, 7.9S, 7.9T, 7.9U, 7.9V, 7.9W, 7.9X, 7.9Y, 7.9Z, 8.0A, 8.0B, 8.0C, 8.0D, 8.0E, 8.0F, 8.0G, 8.0H, 8.0I, 8.0J, 8.0K, 8.0L, 8.0M, 8.0N, 8.0O, 8.0P, 8.0Q, 8.0R, 8.0S, 8.0T, 8.0U, 8.0V, 8.0W, 8.0X, 8.0Y, 8.0Z, 8.1A, 8.1B, 8.1C, 8.1D, 8.1E, 8.1F, 8.1G, 8.1H, 8.1I, 8.1J, 8.1K, 8.1L, 8.1M, 8.1N, 8.1O, 8.1P, 8.1Q, 8.1R, 8.1S, 8.1T, 8.1U, 8.1V, 8.1W, 8.1X, 8.1Y, 8.1Z, 8.2A, 8.2B, 8.2C, 8.2D, 8.2E, 8.2F, 8.2

VICTORY PARK

Design #
610152AR18-SIGNS ONLY

Sheet 21 of 25

Location
VICTORY PARK - INDIV. SIGNS

Address
DALLAS, TX

Acct. Rep. STAN MACRUM
Coordinator JAMIE MACRUM

Designer P. AGUIAR

Date 07/16/14

Approval / Date

Client

Sales

Estimating

Art

Landlord

Engineering

Revision / Date

R1/08/13PA. UPDATED ALL SIGN LOCATIONS & QUANTITIES.
R2/02/14PA. ADJUSTED QUANTITY OF "P" DIRECTIONAL TO (SEVEN) DELETED "P" FROM ENTRANCE AT AREA.
R3/10/2014PA. REVISED SIGN SIZES & QUANTITIES PER CUSTOMER.
R4/10/28/14PA. SHOWED EVERY INDIVIDUAL VARYING SIGN WITH SIDES 1 & 2.
R4/11/24/14PA. ALL "S" SIGNS ADJUSTED TO 10 SQ. FT. ADDED ELEC. REQUIREMENTS FOR ALL SIGNS.
R2/20/15PA. CHANGES PER ARCHITECTURAL COMMENTS & NOTES 200/15.
R3/03/15PA. ADDED CIVIL PLANS WITH ZOOMED IN SECTION VIEWS "A,B,C,D".
R3/03/15. THROUGH THESE SECTION VIEWS "D" DESIGN SURFACE ON SIGN. MINIMAL CLEARANCE HEIGHT OF 3.3 SIGNS FROM 6" TO 7.4".
R4/07/15PA. CHANGED 3.2x1 TO 3.2x1. CHANGED 3.2x1 TO 3.2x1 & ALL DIRECTIONAL COPY ACCORDINGLY ADDED 1 MORE "S" SIGN. 3.2x1 & 3.2x1.
R4/08/15PA. CORRECTED CALL OUT LOCATIONS FOR SIGNS 3.2x1 & 3.2x1 AT SWP SECTION "S" CORRECTED CALL OUT FOR 3.2x1 ADDED CALL OUT TO SIGN QUANTITY REFERENCE SHEET.
R4/08/15PA. REVISED SIGNOR TABLE TO A REGULATED BY CLEARANCE FROM GRADE FOR ALL SIGNS 3.1, 3.2.
R4/07/15PA. REVISED ALL COPY ON ALL SIGNS READING "AUDI PARKING" TO BE "AUDI PARKING" TO SIGN. REVISED ALL SIGNING & DESIGN. CHANGED FROM "P" TO "P" FROM "P" TO "P". CHANGED FROM "P" TO "P".
R4/08/15PA. REVISED ALL VICTORY PARK LOGOS TO HAVE COLOR GRADIENT. ALL 1.1C, 1.2A, 1.2C SPECIFIC COLORS FOR ALL SIGNS. YELLOW STEEL. REVISED SIGNOR DIRECTION & QUANTITIES OF SIGN 1.2A, 1.2B, 1.2C.
R4/08/15PA. ADDED IMAGES OF SIGN NEXT TO IDENTIFIERS ON SITE PLAN.
R4/08/15PA. UPDATED ALL QUANTITIES OF DISTRICT ID. SIGNS "1.4.1", "1.4.2" & "1.3.2".
R4/08/15PA. UPDATED WITH COMMENTS FROM STARTED.
R4/08/15PA. ADJUSTED THE ANGLE OF THE LOCAL STEEL. USE PROTECTING EDGE "P" AT ALL CLEARANCE FROM GRADE. SIGNS "3.1A, 3.1B, 3.2A, 3.2B, 3.2C, 3.2D, 3.2E, 3.2F, 3.2G, 3.2H, 3.2I, 3.2J, 3.2K, 3.2L, 3.2M, 3.2N, 3.2O, 3.2P, 3.2Q, 3.2R, 3.2S, 3.2T, 3.2U, 3.2V, 3.2W, 3.2X, 3.2Y, 3.2Z, 3.2AA, 3.2AB, 3.2AC, 3.2AD, 3.2AE, 3.2AF, 3.2AG, 3.2AH, 3.2AI, 3.2AJ, 3.2AK, 3.2AL, 3.2AM, 3.2AN, 3.2AO, 3.2AP, 3.2AQ, 3.2AR, 3.2AS, 3.2AT, 3.2AU, 3.2AV, 3.2AW, 3.2AX, 3.2AY, 3.2AZ, 3.2BA, 3.2BB, 3.2BC, 3.2BD, 3.2BE, 3.2BF, 3.2BG, 3.2BH, 3.2BI, 3.2BJ, 3.2BK, 3.2BL, 3.2BM, 3.2BN, 3.2BO, 3.2BP, 3.2BQ, 3.2BR, 3.2BS, 3.2BT, 3.2BU, 3.2BV, 3.2BW, 3.2BX, 3.2BY, 3.2BZ, 3.2CA, 3.2CB, 3.2CC, 3.2CD, 3.2CE, 3.2CF, 3.2CG, 3.2CH, 3.2CI, 3.2CJ, 3.2CK, 3.2CL, 3.2CM, 3.2CN, 3.2CO, 3.2CP, 3.2CQ, 3.2CR, 3.2CS, 3.2CT, 3.2CU, 3.2CV, 3.2CW, 3.2CX, 3.2CY, 3.2CZ, 3.2DA, 3.2DB, 3.2DC, 3.2DD, 3.2DE, 3.2DF, 3.2DG, 3.2DH, 3.2DI, 3.2DJ, 3.2DK, 3.2DL, 3.2DM, 3.2DN, 3.2DO, 3.2DP, 3.2DQ, 3.2DR, 3.2DS, 3.2DT, 3.2DU, 3.2DV, 3.2DW, 3.2DX, 3.2DY, 3.2DZ, 3.2EA, 3.2EB, 3.2EC, 3.2ED, 3.2EE, 3.2EF, 3.2EG, 3.2EH, 3.2EI, 3.2EJ, 3.2EK, 3.2EL, 3.2EM, 3.2EN, 3.2EO, 3.2EP, 3.2EQ, 3.2ER, 3.2ES, 3.2ET, 3.2EU, 3.2EV, 3.2EW, 3.2EX, 3.2EY, 3.2EZ, 3.2FA, 3.2FB, 3.2FC, 3.2FD, 3.2FE, 3.2FF, 3.2FG, 3.2FH, 3.2FI, 3.2FJ, 3.2FK, 3.2FL, 3.2FM, 3.2FN, 3.2FO, 3.2FP, 3.2FQ, 3.2FR, 3.2FS, 3.2FT, 3.2FU, 3.2FV, 3.2FW, 3.2FX, 3.2FY, 3.2FZ, 3.2GA, 3.2GB, 3.2GC, 3.2GD, 3.2GE, 3.2GF, 3.2GG, 3.2GH, 3.2GI, 3.2GJ, 3.2GK, 3.2GL, 3.2GM, 3.2GN, 3.2GO, 3.2GP, 3.2GQ, 3.2GR, 3.2GS, 3.2GT, 3.2GU, 3.2GV, 3.2GW, 3.2GX, 3.2GY, 3.2GZ, 3.2HA, 3.2HB, 3.2HC, 3.2HD, 3.2HE, 3.2HF, 3.2HG, 3.2HH, 3.2HI, 3.2HJ, 3.2HK, 3.2HL, 3.2HM, 3.2HN, 3.2HO, 3.2HP, 3.2HQ, 3.2HR, 3.2HS, 3.2HT, 3.2HU, 3.2HV, 3.2HW, 3.2HX, 3.2HY, 3.2HZ, 3.2IA, 3.2IB, 3.2IC, 3.2ID, 3.2IE, 3.2IF, 3.2IG, 3.2IH, 3.2II, 3.2IJ, 3.2IK, 3.2IL, 3.2IM, 3.2IN, 3.2IO, 3.2IP, 3.2IQ, 3.2IR, 3.2IS, 3.2IT, 3.2IU, 3.2IV, 3.2IW, 3.2IX, 3.2IY, 3.2IZ, 3.2JA, 3.2JB, 3.2JC, 3.2JD, 3.2JE, 3.2JF, 3.2JG, 3.2JH, 3.2JI, 3.2JJ, 3.2JK, 3.2JL, 3.2JM, 3.2JN, 3.2JO, 3.2JP, 3.2JQ, 3.2JR, 3.2JS, 3.2JT, 3.2JU, 3.2JV, 3.2JW, 3.2JX, 3.2JY, 3.2JZ, 3.2KA, 3.2KB, 3.2KC, 3.2KD, 3.2KE, 3.2KF, 3.2KG, 3.2KH, 3.2KI, 3.2KJ, 3.2KK, 3.2KL, 3.2KM, 3.2KN, 3.2KO, 3.2KP, 3.2KQ, 3.2KR, 3.2KS, 3.2KT, 3.2KU, 3.2KV, 3.2KW, 3.2KX, 3.2KY, 3.2KZ, 3.2LA, 3.2LB, 3.2LC, 3.2LD, 3.2LE, 3.2LF, 3.2LG, 3.2LH, 3.2LI, 3.2LJ, 3.2LK, 3.2LL, 3.2LM, 3.2LN, 3.2LO, 3.2LP, 3.2LQ, 3.2LR, 3.2LS, 3.2LT, 3.2LU, 3.2LV, 3.2LW, 3.2LX, 3.2LY, 3.2LZ, 3.2MA, 3.2MB, 3.2MC, 3.2MD, 3.2ME, 3.2MF, 3.2MG, 3.2MH, 3.2MI, 3.2MJ, 3.2MK, 3.2ML, 3.2MN, 3.2MO, 3.2MP, 3.2MQ, 3.2MR, 3.2MS, 3.2MT, 3.2MU, 3.2MV, 3.2MW, 3.2MX, 3.2MY, 3.2MZ, 3.2NA, 3.2NB, 3.2NC, 3.2ND, 3.2NE, 3.2NF, 3.2NG, 3.2NH, 3.2NI, 3.2NJ, 3.2NK, 3.2NL, 3.2NM, 3.2NO, 3.2NP, 3.2NQ, 3.2NR, 3.2NS, 3.2NT, 3.2NU, 3.2NV, 3.2NW, 3.2NX, 3.2NY, 3.2NZ, 3.2OA, 3.2OB, 3.2OC, 3.2OD, 3.2OE, 3.2OF, 3.2OG, 3.2OH, 3.2OI, 3.2OJ, 3.2OK, 3.2OL, 3.2OM, 3.2ON, 3.2OO, 3.2OP, 3.2OQ, 3.2OR, 3.2OS, 3.2OT, 3.2OU, 3.2OV, 3.2OW, 3.2OX, 3.2OY, 3.2OZ, 3.2PA, 3.2PB, 3.2PC, 3.2PD, 3.2PE, 3.2PF, 3.2PG, 3.2PH, 3.2PI, 3.2PJ, 3.2PK, 3.2PL, 3.2PM, 3.2PN, 3.2PO, 3.2PP, 3.2PQ, 3.2PR, 3.2PS, 3.2PT, 3.2PU, 3.2PV, 3.2PW, 3.2PX, 3.2PY, 3.2PZ, 3.2QA, 3.2QB, 3.2QC, 3.2QD, 3.2QE, 3.2QF, 3.2QG, 3.2QH, 3.2QI, 3.2QJ, 3.2QK, 3.2QL, 3.2QM, 3.2QN, 3.2QO, 3.2QP, 3.2QQ, 3.2QR, 3.2QS, 3.2QT, 3.2QU, 3.2QV, 3.2QW, 3.2QX, 3.2QY, 3.2QZ, 3.2RA, 3.2RB, 3.2RC, 3.2RD, 3.2RE, 3.2RF, 3.2RG, 3.2RH, 3.2RI, 3.2RJ, 3.2RK, 3.2RL, 3.2RM, 3.2RN, 3.2RO, 3.2RP, 3.2RQ, 3.2RR, 3.2RS, 3.2RT, 3.2RU, 3.2RV, 3.2RW, 3.2RX, 3.2RY, 3.2RZ, 3.2SA, 3.2SB, 3.2SC, 3.2SD, 3.2SE, 3.2SF, 3.2SG, 3.2SH, 3.2SI, 3.2SJ, 3.2SK, 3.2SL, 3.2SM, 3.2SN, 3.2SO, 3.2SP, 3.2SQ, 3.2SR, 3.2SS, 3.2ST, 3.2SU, 3.2SV, 3.2SW, 3.2SX, 3.2SY, 3.2SZ, 3.2TA, 3.2TB, 3.2TC, 3.2TD, 3.2TE, 3.2TF, 3.2TG, 3.2TH, 3.2TI, 3.2TJ, 3.2TK, 3.2TL, 3.2TM, 3.2TN, 3.2TO, 3.2TP, 3.2TQ, 3.2TR, 3.2TS, 3.2TT, 3.2TU, 3.2TV, 3.2TW, 3.2TX, 3.2TY, 3.2TZ, 3.2UA, 3.2UB, 3.2UC, 3.2UD, 3.2UE, 3.2UF, 3.2UG, 3.2UH, 3.2UI, 3.2UJ, 3.2UK, 3.2UL, 3.2UM, 3.2UN, 3.2UO, 3.2UP, 3.2UQ, 3.2UR, 3.2US, 3.2UT, 3.2UU, 3.2UV, 3.2UW, 3.2UX, 3.2UY, 3.2UZ, 3.2VA, 3.2VB, 3.2VC, 3.2VD, 3.2VE, 3.2VF, 3.2VG, 3.2VH, 3.2VI, 3.2VJ, 3.2VK, 3.2VL, 3.2VM, 3.2VN, 3.2VO, 3.2VP, 3.2VQ, 3.2VR, 3.2VS, 3.2VT, 3.2VU, 3.2VV, 3.2VW, 3.2VX, 3.2VY, 3.2VZ, 3.2WA, 3.2WB, 3.2WC, 3.2WD, 3.2WE, 3.2WF, 3.2WG, 3.2WH, 3.2WI, 3.2WJ, 3.2WK, 3.2WL, 3.2WM, 3.2WN, 3.2WO, 3.2WP, 3.2WQ, 3.2WR, 3.2WS, 3.2WT, 3.2WU, 3.2WV, 3.2WW, 3.2WX, 3.2WY, 3.2WZ, 3.2XA, 3.2XB, 3.2XC, 3.2XD, 3.2XE, 3.2XF, 3.2XG, 3.2XH, 3.2XI, 3.2XJ, 3.2XK, 3.2XL, 3.2XM, 3.2XN, 3.2XO, 3.2XP, 3.2XQ, 3.2XR, 3.2XS, 3.2XT, 3.2XU, 3.2XV, 3.2XW, 3.2XX, 3.2XY, 3.2XZ, 3.2YA, 3.2YB, 3.2YC, 3.2YD, 3.2YE, 3.2YF, 3.2YG, 3.2YH, 3.2YI, 3.2YJ, 3.2YK, 3.2YL, 3.2YM, 3.2YN, 3.2YO, 3.2YP, 3.2YQ, 3.2YR, 3.2YS, 3.2YT, 3.2YU, 3.2YV, 3.2YW, 3.2YX, 3.2YY, 3.2YZ, 3.2ZA, 3.2ZB, 3.2ZC, 3.2ZD, 3.2ZE, 3.2ZG, 3.2ZH, 3.2ZI, 3.2ZJ, 3.2ZK, 3.2ZL, 3.2ZM, 3.2ZN, 3.2ZO, 3.2ZP, 3.2ZQ, 3.2ZR, 3.2ZS, 3.2ZT, 3.2ZU, 3.2ZV, 3.2ZW, 3.2ZX, 3.2ZY, 3.2ZZ.

Chandler Signs
Brand Image Begins Here.

3201 Manor Way Dallas, TX 75235
214-902-2000 Fax 214-902-2044

17319 San Pedro, Ste 200 San Antonio, TX 78223
210-349-3804 Fax 210-349-8724

963 Baxter Avenue, Ste 200 Louisville, KY 40204
502-479-3075 Fax 502-412-0013

2584 Sand Hill Point Circle Davenport, FL 33837
863-420-1100 Fax 863-424-1160

37 Waterfront Park Court Dawsonville, GA 30534
800-851-7062 Fax 210-349-8724

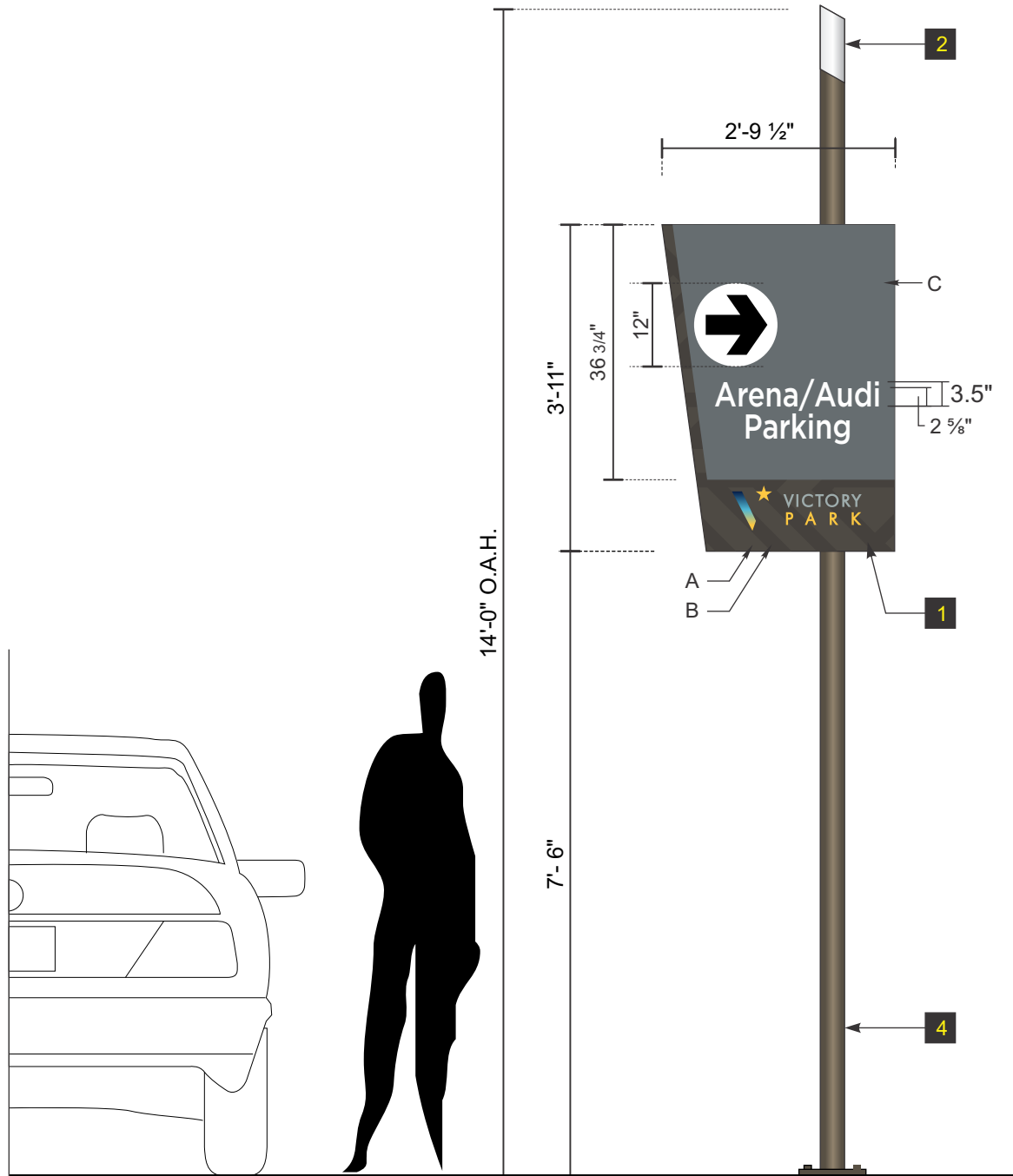
P.O. Box 125 206 Doral Drive Portland, TX 78374
361-563-5599 Fax 361-643-6533

1335 Park Center Drive, UNIT C Vista, CA 92081
760-967-7003 Fax 760-967-7033

This drawing is the property of Chandler Signs, L.P., L.L.P. and all rights to its use for the reproduction are reserved by Chandler Signs, L.P., L.L.P.

FINAL ELECTRICAL CONNECTION BY CUSTOMER

THIS SIGN IS INTENDED TO BE INSTALLED IN ACCORDANCE WITH ARTICLE 600 OF THE NATIONAL ELECTRICAL CODE AND/OR OTHER APPLICABLE LOCAL CODES. THIS INCLUDES PROPER GROUNDING & BONDING OF THE SIGN. SIGN WILL BEAR UL LABEL(S).



Pole mounted single panel sign intended for locations requiring only 1 or 2 messages. Sign relies upon 3M reflective vinyl for its visibility at night.

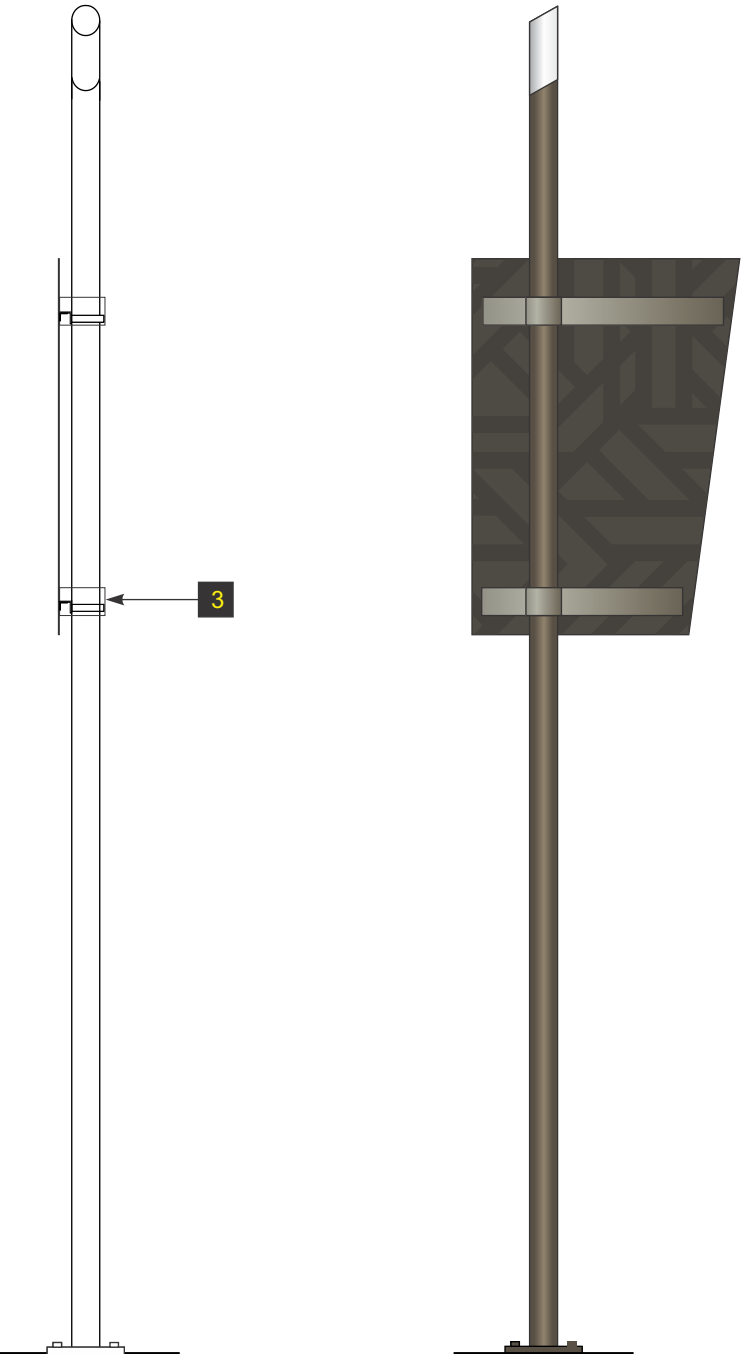
- 1 .125" Plate stock panel, painted finish.
A). Background Painted Medium Bronze Metallic Gloss.
B). Pattern Painted Medium Bronze Metallic Matte.
C). Tiger Drylac 038/90011 Argento 308 Metallic

To have Reflective 3M #680-10 White vinyl copy and 3M #680-76 Light Blue arrow & "P" graphics.

"V" & "★" Logo to be 1st. surface applied Digitally Printed Vinyl.

Backside of panel to be painted Medium Bronze Metallic Gloss. Backside Pattern Painted Medium Bronze Metallic Matte.

- 2 3" I.D. X .216" Wall primary pole, top capped and ground smooth with non-illuminated angled profile White painted finial.
- 3 Sign secured to post with Z strips and Band-it type hardware. Use decorative escutcheon covers at back over straps painted to match: P.1 - Tiger Drylac Powdercoat 038/60060 Med. Bronze Metallic.
- 4 Steel Support to be primed & painted to match: P.1 - Tiger Drylac Powdercoat 038/60060 Med. Bronze Metallic.



End View

Backside

3.3b
2 **3.3 SIGN (NON-ILLUM) - ELEVATION**
QTY. ONE (1) REQUIRED - MANUFACTURE AND INSTALL

SCALE: 1/2" = 1'-0"

SQ. FT.: 9.72 EA.

