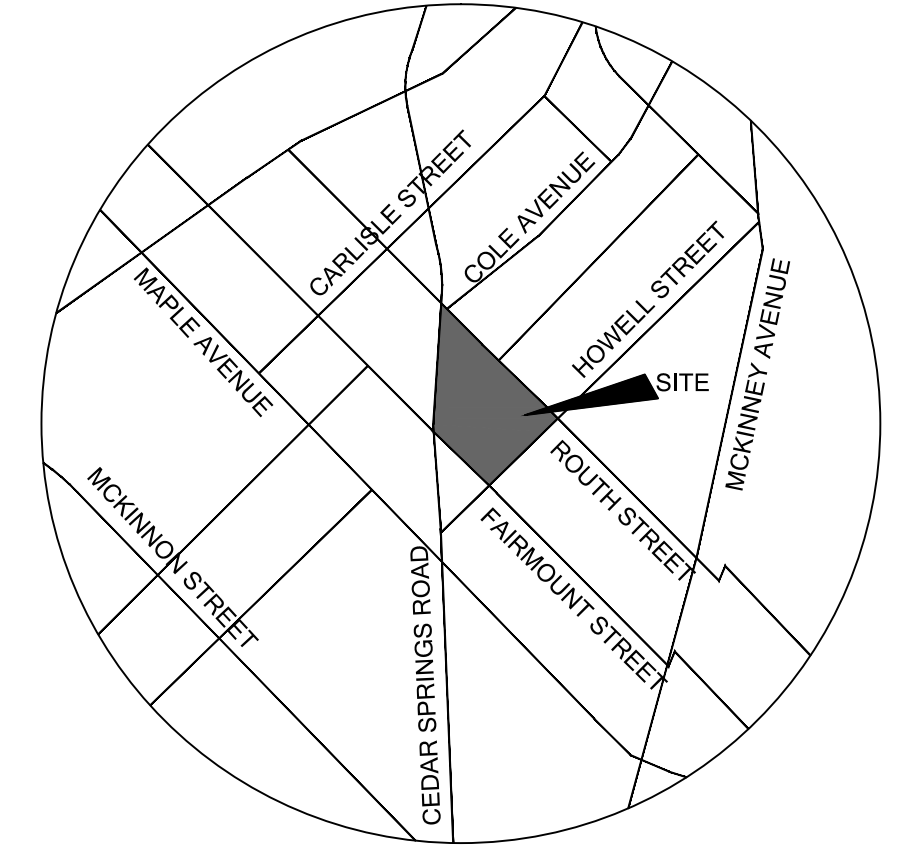


NUMBER	DIRECTION	DISTANCE
L1	S 85°02'57" E	13.94'

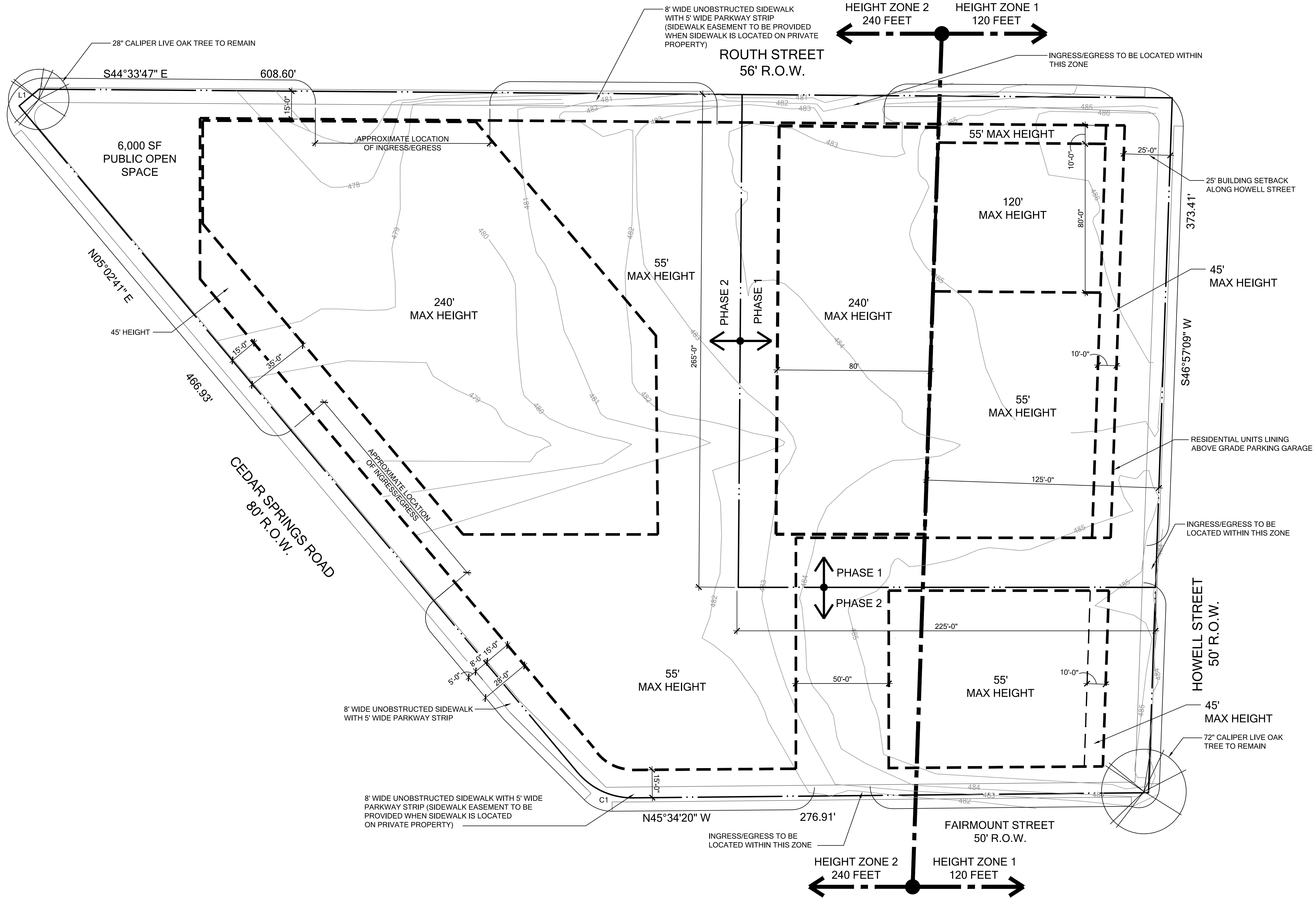
NUMBER	DELTA ANGLE	RADIUS	ARC LENGTH	TANGENT	CHORD LENGTH	CHORD DIRECTION
C1	50°37'01"	38.34	33.87	18.13	32.78	N 20°15'52" W



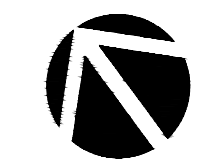
LOCATION MAP

PROJECT DATA

SITE AREA:	3.9838 acres
MAXIMUM LOT COVERAGE:	173,534 SF
MAXIMUM FLOOR AREA RATIO (FAR):	80%
	4.1 FOR ANY SINGLE USE (694,136 SF)
	4.5:1 FOR ALL USES COMBINED (780,903 SF)
	(IF THERE IS A RESIDENTIAL COMPONENT OF AT LEAST A 1.0 FAR)
MAXIMUM RESIDENTIAL DENSITY:	NONE
OPEN SPACE	AT LEAST 6,000 SF OF PUBLICLY ACCESSIBLE OPEN SPACE SHALL BE PROVIDED AT STREET LEVEL ON SITE; THIS OPEN SPACE MUST ABUT THE PUBLIC RIGHT OF WAY AND BE IN A SINGLE CONTIGUOUS LOCATION.



2808 FAIRMOUNT STREET CONCEPTUAL PLAN



NORTH SCALE: 1" = 30'-0"

February 26, 2016

Case: Z134-301



GFF Planning