

SITE PLAN LEGEND	SITE SUMMARY	SITE MAP	VICINITY MAP
	<p><b>SITE AREA:</b> 9.96 ACRES 433,857 SQFT</p> <p><b>BUILDING AREA:</b></p> <ul style="list-style-type: none"> <li>EXISTING TO REMAIN - SANCTUARY 12,268 SF</li> <li>EXISTING TO REMAIN - CONVENT 2,541 SF</li> <li>EXISTING STORAGE BUILDINGS 1,572 SF</li> <li>PHASE 2 ACADEMIC BUILDING - NEW 20,000 SF</li> <li>PHASE 3A ADMINISTRATION - NEW 3,500 SF</li> <li>PHASE 3A MEDIA CENTER - NEW 8,000 SF</li> <li>PHASE 3A DINING &amp; KITCHEN - NEW 8,000 SF</li> <li>PHASE 3A PAVILION - NEW 500 SF</li> <li>PHASE 3B ADMIN, ART &amp; MUSIC - RENO 15,100 SF</li> <li>PHASE 3B ATHLETIC BUILDING - NEW 13,000 SF</li> <li>FUTURE PHASE - NEW 37,500 SF</li> </ul> <p><b>TOTAL BUILDING AREA:</b> 121,982 SF</p> <p><b>MAXIMUM LOT COVERAGE ALLOWED:</b> 130,157 SF (30.0%)</p> <p><b>TOTAL LOT COVERAGE OF EXISTING AND NEW:</b> 121,982 SF (28.1%)</p> <p><b>HEIGHT:</b></p> <ul style="list-style-type: none"> <li>EXISTING SANCTUARY 36 FT</li> <li>EXISTING SANCTUARY BELL TOWER 47 FT</li> <li>EXISTING TO REMAIN - CONVENT 14 FT</li> <li>PHASE 2 ACADEMIC BUILDING - NEW 29-36 FT</li> <li>PHASE 3A ADMINISTRATION - NEW 38 FT</li> <li>PHASE 3A ENTRY TOWER - NEW 38 FT</li> <li>PHASE 3A MEDIA CENTER - NEW 38 FT</li> <li>PHASE 3A DINING &amp; KITCHEN - NEW 38 FT</li> <li>PHASE 3A PAVILION - NEW 38 FT</li> <li>PHASE 3B ART &amp; MUSIC - RENO 24 FT</li> <li>PHASE 3B ATHLETIC BUILDING - NEW 38 FT</li> <li>PHASE 4 - FUTURE 38 FT</li> </ul> <p><b>MAXIMUM NUMBER OF STORIES:</b> 2</p>	<p><b>SITE MAP</b></p>	<p><b>VICINITY MAP</b></p>
	<p><b>SITE SUMMARY</b></p> <p><b>PAVING AREA (26.0%):</b></p> <ul style="list-style-type: none"> <li>WEST PARKING 37,100 SF</li> <li>EAST PARKING 55,500 SF</li> <li>WALKWAYS (APPROXIMATE) 20,000 SF</li> </ul> <p><b>OPEN SPACE AREA (45.9%):</b></p> <ul style="list-style-type: none"> <li>OPEN GREEN SPACE (APPROXIMATE) 117,376 SF</li> <li>ATHLETIC FIELD 81,900 SF</li> </ul>	<p><b>PARKING CALCULATIONS</b></p> <p>SPACES REQUIRED FOR SCHOOL FUNCTION: 21 HIGH SCHOOL CLASSROOMS AT 9.5 SPACES PER CLASSROOM = 200 SPACES</p> <p>SPACES REQUIRED FOR SITE: 200 SPACES TOTAL PARKING PROVIDED: 219 SPACES 93 SPACES SHARED WITH CHURCH</p> <p>PROVIDED PARKING:</p> <ul style="list-style-type: none"> <li>NON-ACCESSIBLE SPACES: 211</li> <li>ACCESSIBLE SPACES: 8</li> <li>VAN ACCESSIBLE SPACES: 6</li> <li>TOTAL: 219</li> </ul> <p>BICYCLE PARKING REQUIRED = NONE BICYCLE PARKING SPACES PROVIDED = NONE</p>	
		<p><b>NOTES BY NUMBER</b></p> <ul style="list-style-type: none"> <li>◊ &lt;&lt;&lt; Indicates Sheet Keynote on Plan</li> <li>SP01 45FT VISIBILITY TRIANGLE</li> <li>SP02 EXISTING WROUGHT IRON FENCE 3FT HEIGHT</li> <li>SP03 NEW WROUGHT IRON FENCE 6FT HEIGHT</li> <li>SP04 EXISTING CHAIN LINK FENCE 6FT HEIGHT</li> <li>SP05 NEW WROUGHT IRON FENCE AND PARKING GATE 30 INCHES HIGH</li> <li>SP06 NEW WROUGHT IRON PARKING GATE 6FT HEIGHT</li> <li>SP07 SITE RETAINING WALL</li> <li>SP08 POTENTIAL STORM SEWER OUTLET</li> <li>SP09 PEDESTRIAN GATE ACCESS</li> <li>SP10 BUILDING AREA</li> <li>SP11 EXISTING STORAGE BUILDINGS USED BY CHURCH</li> <li>SP12 ATHLETIC FIELD LIGHT POLE</li> <li>SP13 20FT VISIBILITY TRIANGLE</li> </ul>	

NOTE: DOCUMENTS ARE INCOMPLETE AND MAY NOT BE USED FOR REGULATORY APPROVAL, PERMITTING, OR CONSTRUCTION PURPOSES.

**CRISTO REY DALLAS  
COLLEGE PREP  
ACADEMIC BUILDING**  
1064 N ST. AUGUSTINE  
DRIVE  
DALLAS, TX 75217

**ZONING CASE  
NUMBER:  
Z156-179**

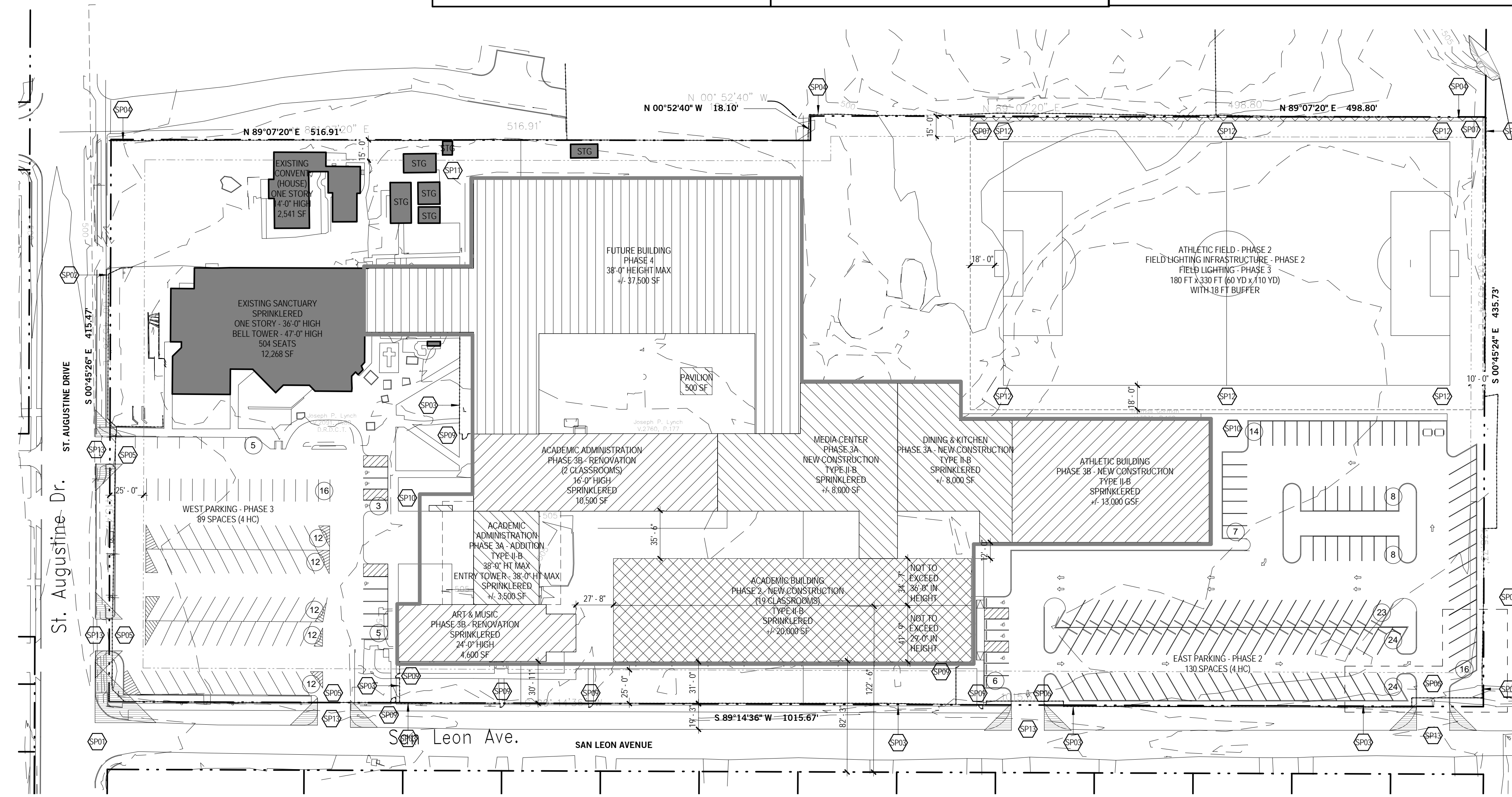
Job Number 143072.002  
Issue Date 02.09.2016  
Revision Date

TITLE  
**DETAILED  
DEVELOPMENT PLAN**

SHEET NUMBER

**PD #XX1**

FOR INFORMATION ONLY  
Copyright © 2015 Perkins+Will



**01 DETAILED DEVELOPMENT PLAN**  
1" = 50'-0"

