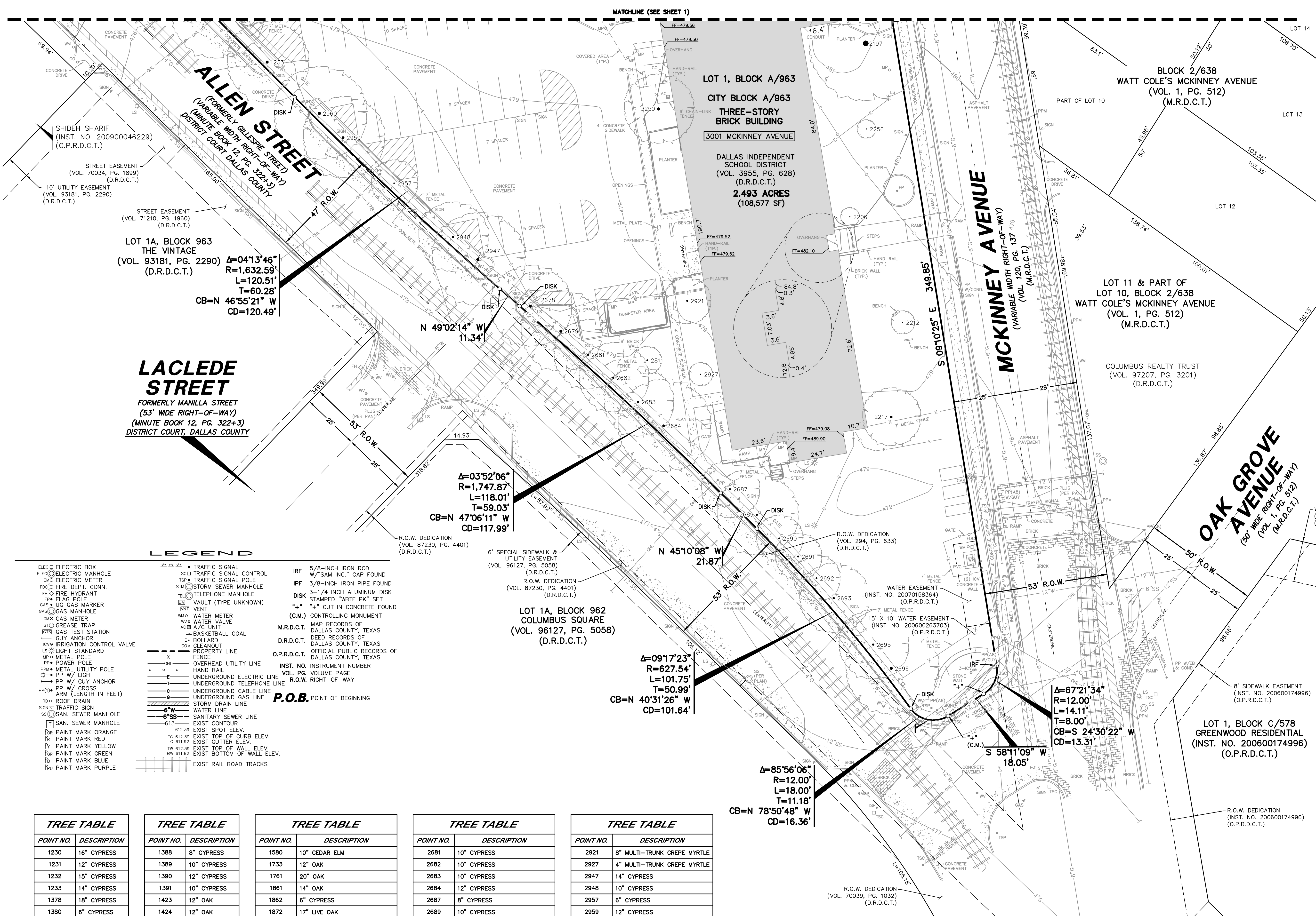


VICINITY MAP



LEGEND

- Legend symbols and descriptions for various survey features including electric boxes, manholes, fences, easements, and utility lines.

P.O.B. POINT OF BEGINNING

Tree Table with columns: POINT NO., DESCRIPTION. Lists trees like 1230 16" CYPRESS, 1231 12" CYPRESS, etc.

Tree Table with columns: POINT NO., DESCRIPTION. Lists trees like 1388 8" CYPRESS, 1389 10" CYPRESS, etc.

Tree Table with columns: POINT NO., DESCRIPTION. Lists trees like 1580 10" CEDAR ELM, 1733 12" OAK, etc.

Tree Table with columns: POINT NO., DESCRIPTION. Lists trees like 2681 10" CYPRESS, 2682 10" CYPRESS, etc.

Tree Table with columns: POINT NO., DESCRIPTION. Lists trees like 2921 8" MULTI-TRUNK CREPE MYRTLE, 2927 4" MULTI-TRUNK CREPE MYRTLE, etc.

Tree Table with columns: POINT NO., DESCRIPTION. Lists trees like 2921 8" MULTI-TRUNK CREPE MYRTLE, 2927 4" MULTI-TRUNK CREPE MYRTLE, etc.

GENERAL NOTES

- Notes regarding the survey system, lot drainage, and the purpose of the plat to create one lot from unplatted land.

PRELIMINARY

THIS DOCUMENT SHALL NOT BE RECORDED FOR ANY PURPOSE AND SHALL NOT BE USED OR VIEWED OR RELIED UPON AS A FINAL SURVEY DOCUMENT. RELEASED 3/6/19.

SHEET 2 OF 3 PRELIMINARY PLAT WILLIAM B. TRAVIS ELEMENTARY SCHOOL LOT 1, BLOCK A/963 BEING OUT OF THE JOHN GRIGSBY SURVEY, ABSTRACT NO. 495, CITY OF DALLAS, DALLAS COUNTY, TEXAS CITY PLAN FILE NO.: S189-145 ENGINEERING PLAN NO.: 3111-

Pacheco Koch logo and contact information for Dallas, Texas, including phone and email details.

SURVEYOR: PACHECO KOCH CONSULTING ENGINEERS, INC. 7557 RAMBLER ROAD, SUITE 1400 DALLAS, TEXAS 75231 PH: (972) 235-3031 CONTACT: JUSTIN WALDRIP

OWNER: DALLAS INDEPENDENT SCHOOL DISTRICT 3700 ROSS AVENUE DALLAS, TEXAS 75204 PH: (972) 925-7200 CONTACT: DON SMITH

Summary table with columns: DRAWN BY, CHECKED BY, SCALE, DATE, JOB NUMBER. Values include CO/DHM, MWW/JWW, 1"=20', MARCH 2019, 3226-17.495.

Vertical text on the left edge: M:\19... 17.45 PM 3/22/19 17.495 DWG SURVEY CJD 2015 3226-17.495PPT.DWG

Vertical text on the right edge: PRELIMINARY PLAT - WILLIAM B. TRAVIS ELEMENTARY SCHOOL LOT 1, BLOCK A/963