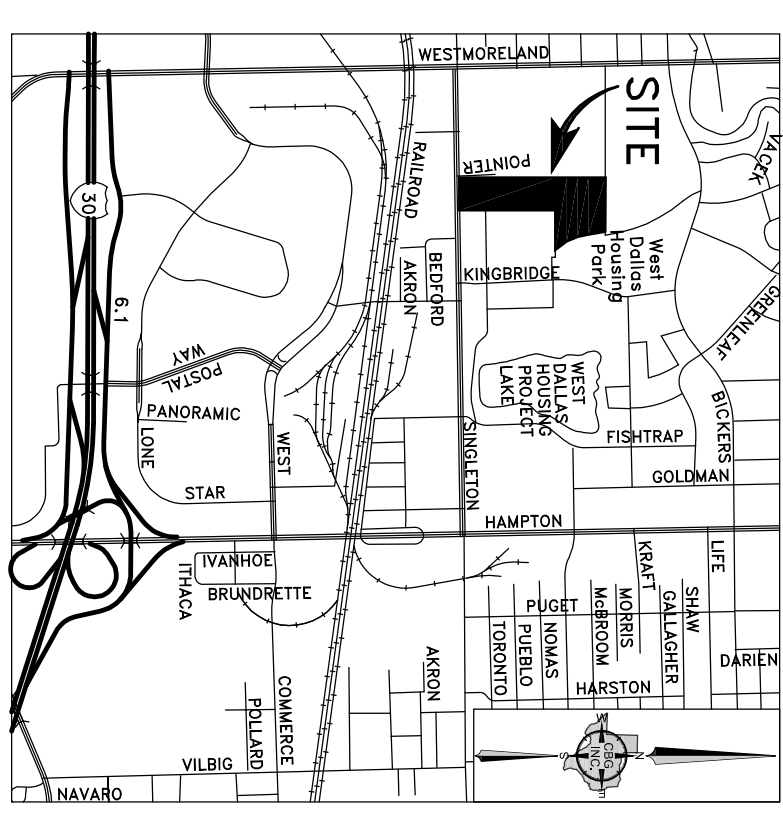
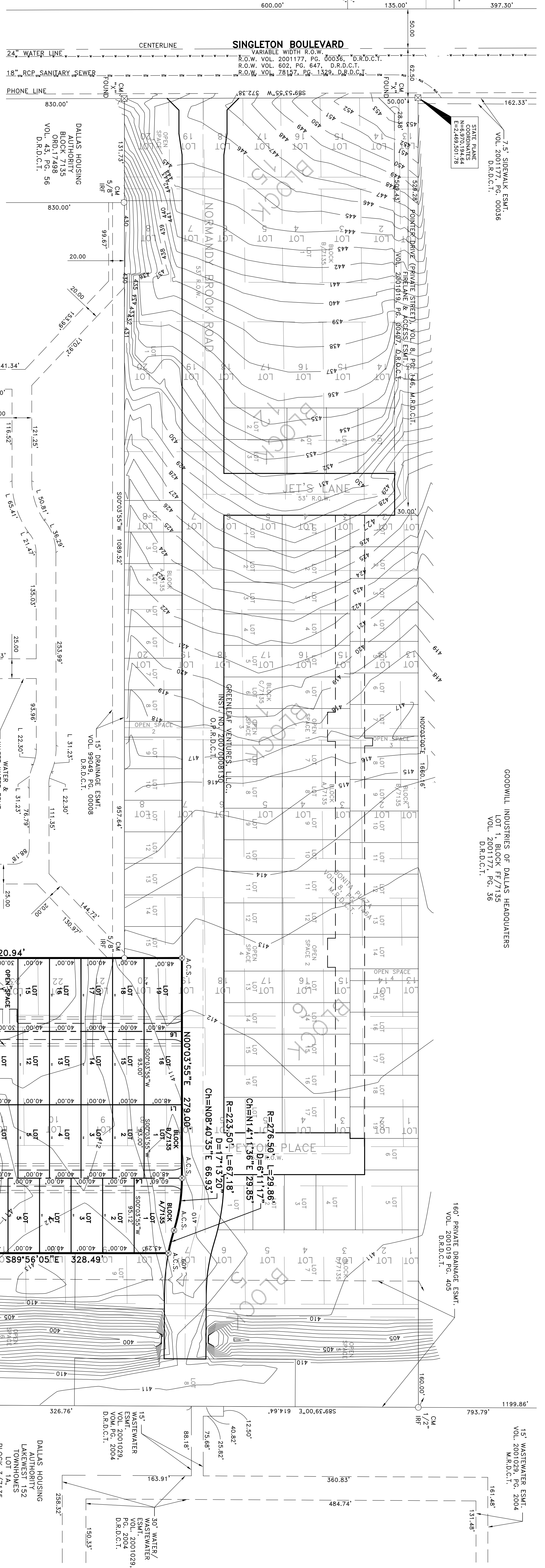


SCALE: 1" = 60'

THE DALLAS INDEPENDENT SCHOOL DISTRICT
BLOCK 7224
VOL. 91139, PG. 0720
D.R.D.C.T.

REDEEMER BAPTIST CHURCH
BLOCK 7224
VOL. 91139, PG. 0720
D.R.D.C.T.

THE DALLAS INDEPENDENT SCHOOL DISTRICT
BLOCK 7228
VOL. 675, PG. 401-402, D.R.D.C.T.
VOL. 686, PG. 155 D.R.D.C.T.

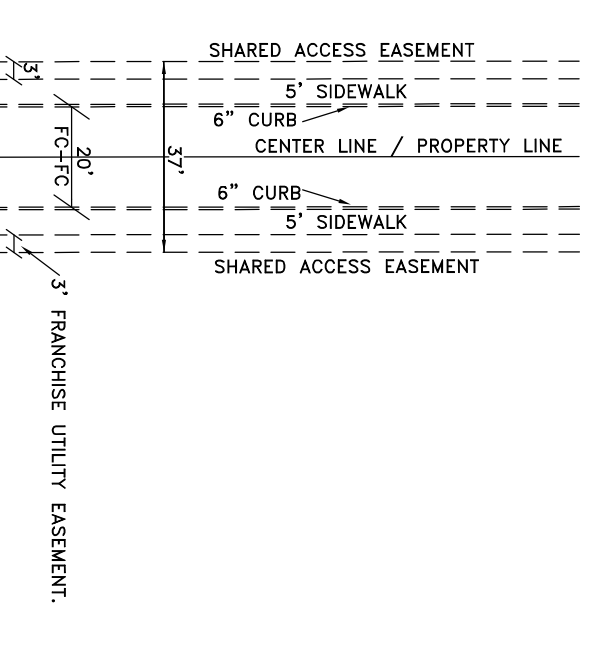


VICINITY MAP
NOT TO SCALE

LEGEND:

- CM CONTROLLING MONUMENT
- IRF IRON ROD FOUND
- IRF YC 1/2 INCH IRON ROD FOUND WITH A PLASTIC YELLOW CAP
- A.C.S. 3 INCH ALUMINUM DISK STAMPED "SVA & PRLS 5513" SET OVER A 1/2 INCH IRON ROD SET
- ESMT. EASEMENT
- VOL. VOLUME
- PG. PAGE
- INST. NO. INSTRUMENT NUMBER
- SQ. FT. SQUARE FEET
- ORD. ORDINANCE
- R.O.W. RIGHT-OF-WAY
- M.R.D.C.T. MAP RECORDS, DALLAS COUNTY, TEXAS
- O.P.R.D.C.T. OFFICIAL PUBLIC RECORDS, DALLAS COUNTY, TEXAS

37' SHARED ACCESS EASEMENT
PLAN VIEW FOR REFERENCE
(NOT TO SCALE)



GENERAL NOTES

- 1) BEARINGS SHOWN ARE BASED ON THE STATE PLANE COORDINATE SYSTEM, TEXAS NORTH CENTRAL ZONE, NAD 83 (2011).
- 2) THE PURPOSE OF THIS PLAN IS TO CREATE 35 RESIDENTIAL LOTS AND ONE OPEN SPACE.
- 3) LOT TO LOT DRAINAGE WILL NOT BE ALLOWED WITHOUT ENGINEERING SECTION APPROVAL.
- 4) ANY STRUCTURE NEW OR EXISTING MAY NOT EXTEND ACROSS NEW PROPERTY LINES.
- 5) COORDINATES SHOWN HEREON ARE TEXAS STATE PLANE COORDINATE SYSTEM, NORTH CENTRAL ZONE, NORTH AMERICAN DATUM OF 1983 ON GRID COORDINATE VALUES, NO SCALE AND NO PROJECTION.
- 6) BENCHMARK IS A SQUARE CUT IN CONCRETE CURB CENTER OF RADIUS WEST CORNER OF TRIANGULAR MEDIAN AT JUNIOR STREET AND DEATY STREET. (ELEV.=431.88')

(SHEET 1 OF 2)

OWNER: GREENLEAF VENTURES, L.L.C.
A TEXAS LIMITED LIABILITY COMPANY
VICOR TOLEDO, MANAGER
11700 PRESTON RD., SUITE 660-192,
DALLAS, TEXAS 75230
214-755-9905

PLANNING & SURVEYING
Main Office
12025 Shiloh Road, Ste. 290
Dallas, TX 75228
P 214.490.0485
F 214.490.2216
SURREY TEXAS LLC
11700 Preston Rd., Suite 660-192,
Dallas, Texas 75230
214-755-9905
www.cbgtx.com

PRELIMINARY PLAN
SINGLETON VILLAS EAST ADDITION
A SHARED ACCESS DEVELOPMENT
LOTS 1 THROUGH 19, BLOCK A/7135; LOTS 1 THROUGH 16, BLOCK B/7135;
AND ONE OPEN SPACE
153,825 SQ.FT. / 3.531 ACRES
BEING A REPEAT OF
A PORTION OF LOTS 7-12 OF BLOCK 5
OF THE BONITA PLAZA ADDITION AND A
PORTION OF LOTS 8-12 OF BLOCK 6,
ENCH HORTON SITUATED IN THE
CITY OF DALLAS, DALLAS COUNTY, TEXAS
CITY PLAN FILE NO. S189-156

STATE PLANE
COORDINATES
N=6,971,886.13
E=2,470,088.47

DALLAS HOUSING
AUTHORITY
LAKEWEST 152
TOWNHOMES
LOT 1A,
BLOCK 3/7135
VOL. 200129,
PG. 2004
D.R.D.C.T.

WASTEWATER
ESMT.
VOL. 2001029,
VOL. PG. 2004
D.R.D.C.T.

15' WASTEWATER ESMT.
VOL. 2001029, PG. 2004
M.R.D.C.T.

GOODWILL INDUSTRIES OF DALLAS HEADQUARTERS
LOT 1, BLOCK FF/7135
VOL. 200177, PG. 36
D.R.D.C.T.

DALLAS HOUSING AUTHORITY
GEORGE LOVING PLACE
LOT 1, BLOCK 7135
VOL. 99049, PG. 00008
D.R.D.C.T.

15' DRAINAGE ESMT.
VOL. 99049, PG. 00008
D.R.D.C.T.

WATER &
WASTEWATER ESMT.
VOL. 99049, PG. 00008
D.R.D.C.T.

37' WIDE SHARED ACCESS EASEMENT
WITH 9 PARKING SPACES
BY SPINST. NO. O.P.R.D.C.T.

POINT OF BEGINNING

POINT OF COMMENCING