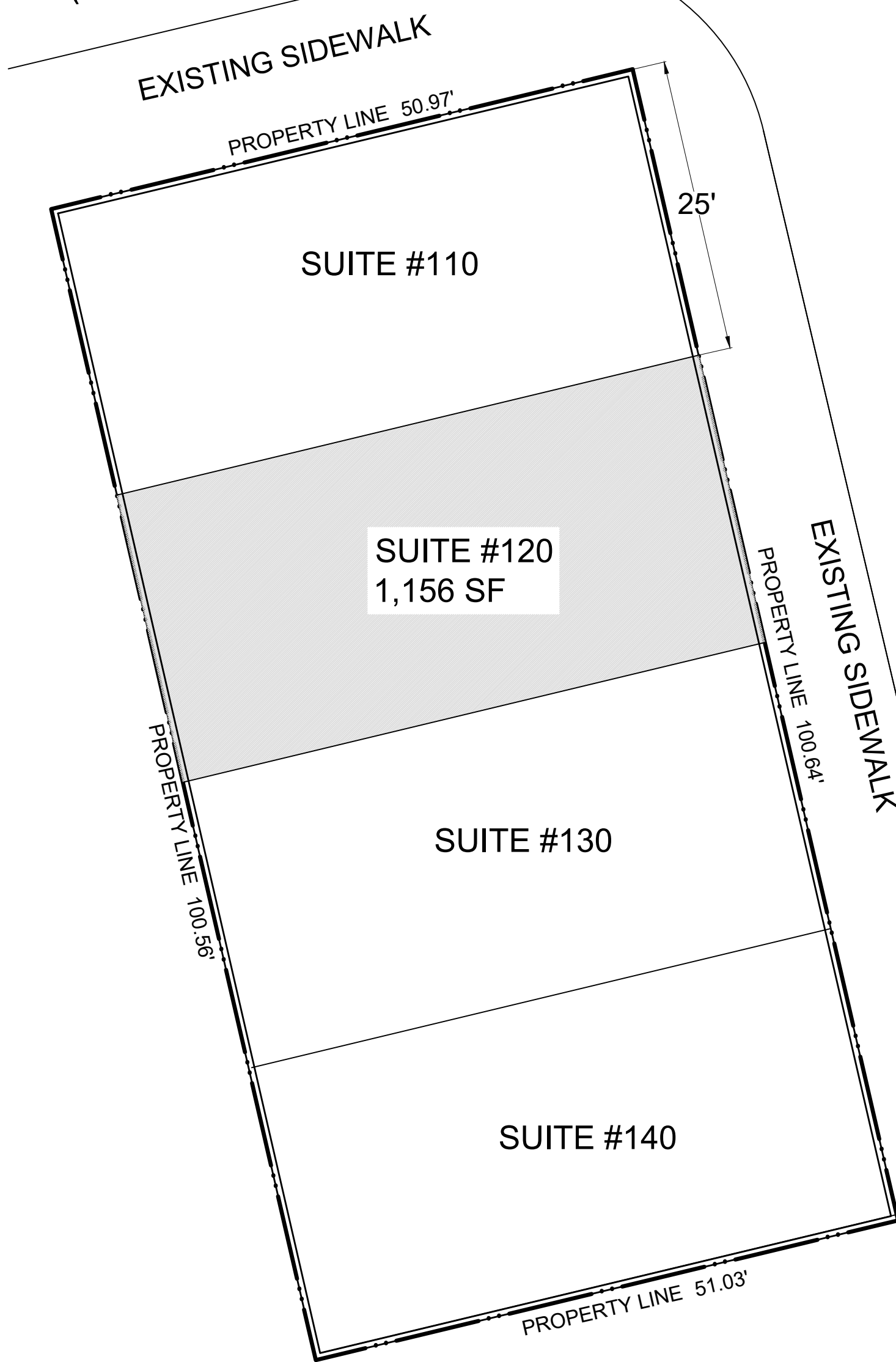
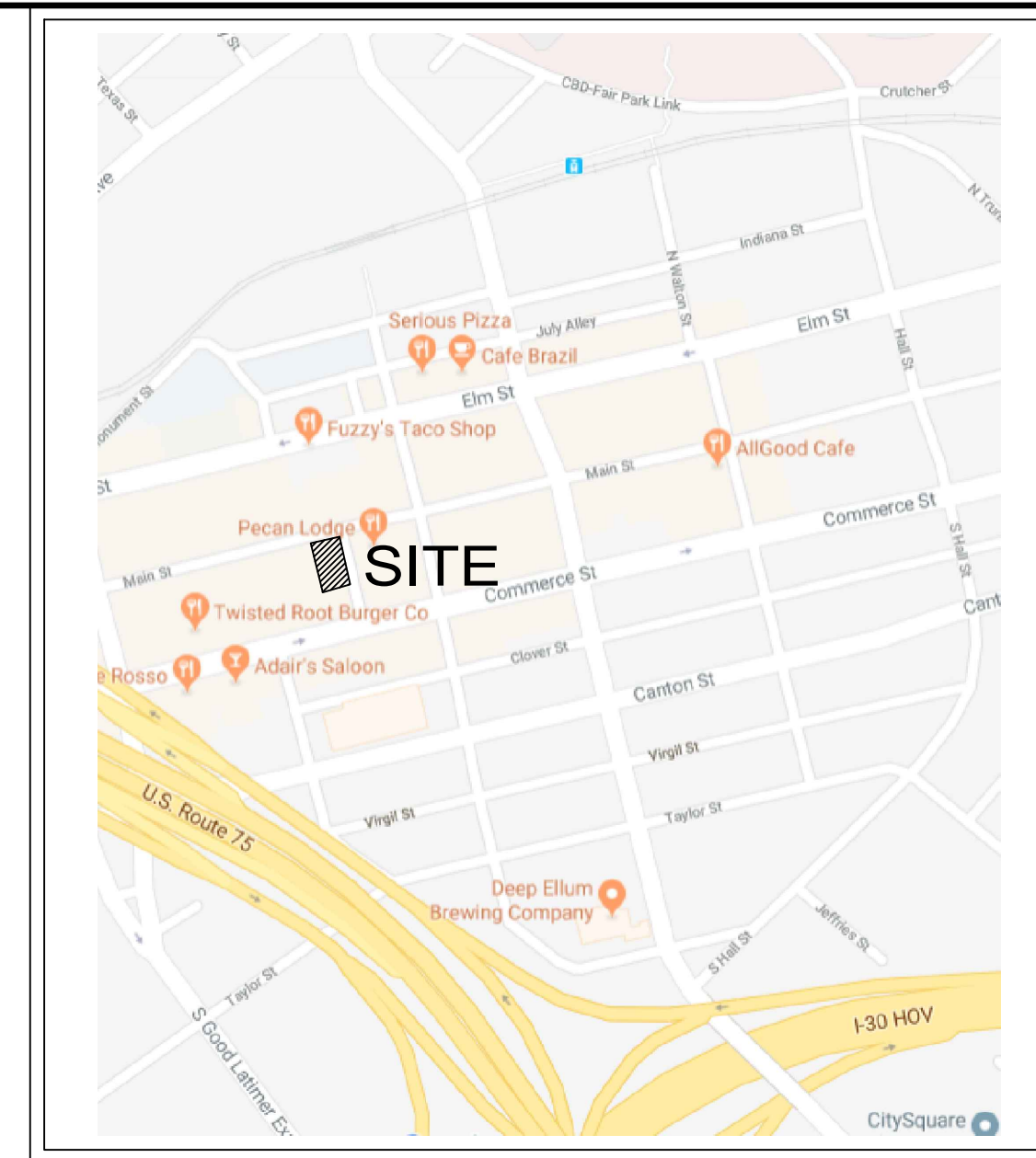


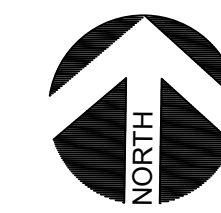
MAIN STREET
(80' WIDTH ROW)



PRYOR STREET
(33.5' WIDTH ROW)



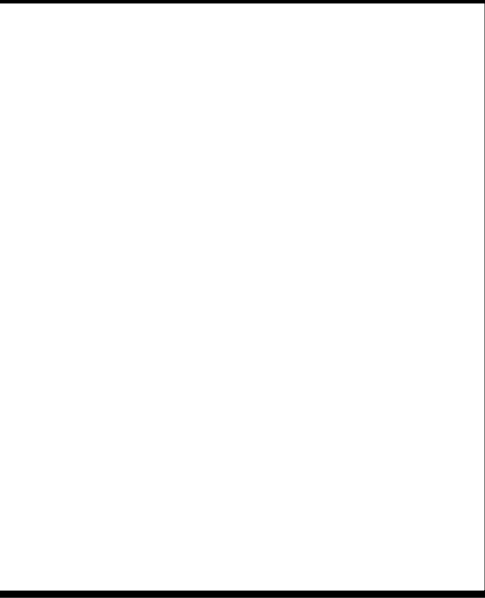
VICINITY MAP
NTS



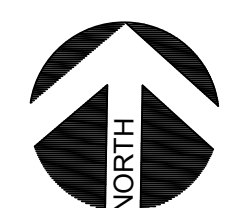
Use: Alcoholic Beverage Establishment - Microbrewery, Distillery or Winery	
Zoning: PDD 269	
Site Information:	
Total Existing Building Square Footage	5000
Suite 120 Covered Common Area*	374
Suite 120 Interior Square Footage*	782
SUP Lot Area (SF):	5,000
Lot coverage:	100%
Parking to be provided in accordance with PDD 269	
*Demising walls between units are approximate	

01/29/2018
PROJECT NUMBER
CASE NUMBER

PERMITTED
DEVELOPMENT
416 S. Ervay Street
Dallas, Texas 75201
214.686.3635
www.permitteddevelopmentdallas.com



2656 MAIN STREET; SUITE #120
CITY OF DALLAS, TEXAS



1

SUP SITE PLAN; SUITE #120

SCALE: 1" = 10'-0"

