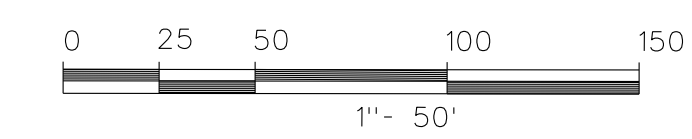
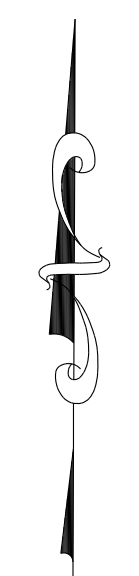




VICINITY MAP (NOT TO SCALE)



LEGEND	
⊗	IRF W/SIZE NOTED
●	CAPPED IRF W/SIZE NOTED
IRF	IRON ROD FOUND
CM	CONTROLLING MONUMENT
○	LIGHT POLE
⊕	POWER POLE
—	GUY WIRE
▲	BURIED CABLE MARKER
⊕	COMMUNICATIONS MANHOLE
⊕	ELECTRIC MANHOLE
⊕	GAS MANHOLE
⊕	SANITARY SEWER MANHOLE
⊕	STORM SEWER MANHOLE
⊕	IRRIGATION CONTROL VALVE
CO	CLEAN OUT
T	WATER VALVE
⊕	TREE
⊕	HEDGES/SHRUB
⊕	GAS METER
⊕	WATER METER
⊕	FIRE HYDRANT
⊕	TELEPHONE PEDESTAL
⊕	WATER MANHOLE
⊕	TEMPORARY BENCHMARK (TBM)
⊕	FENCE CORNER
⊕	"X" CUT FOUND
⊕	SIGN
—	ASPHALT PAVING
—	CONCRETE PAVING
⊕	ALUMINUM MONUMENT

LINE TYPE LEGEND	
---	BOUNDARY LINE
---	EASEMENT LINE
---	OVERHEAD POWER
---	FENCE
---	CONTOUR LINE
---	WATER LINE
---	WASTEWATER LINE
---	AWNING
---	GASLINE

DESCRIPTION	MEASURED DOWN	ELEVATION
TOP OF RIM		607.84
8" WW OUT (E)	4.85	602.99
8" WW IN (W)	4.85	602.99

PRELIMINARY, THIS DOCUMENT SHALL NOT BE RECORDED FOR ANY PURPOSE AND SHALL NOT BE USED OR VIEWED OR RELIED UPON AS A FINAL SURVEY DOCUMENT

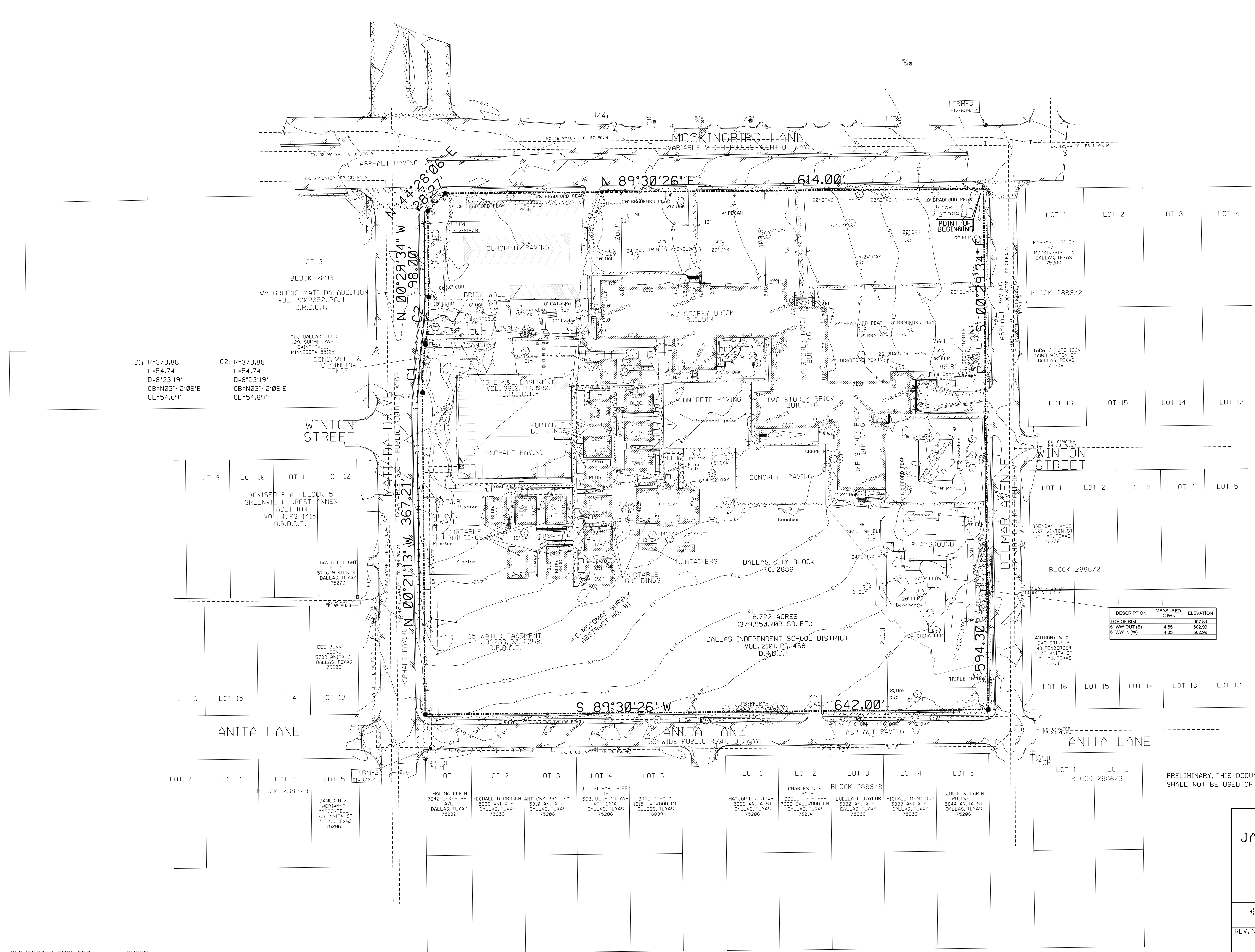
S156-133

**PRELIMINARY PLAT  
JACKSON ELEMENTARY SCHOOL  
ADDITION**

8.722 ACRES / 379,950.709 SQ. FT.  
CITY BLOCK 2886  
A.C. MCCOMAS SURVEY, ABSTRACT NO. 911  
CITY OF DALLAS, DALLAS COUNTY, TEXAS

**BDS** BDS TECHNOLOGIES, INC  
TECHNOLOGIES, INC 11325 PEGASUS STREET, E-200  
DALLAS, TX 75028

REV. NO.	DATE	DESCRIPTION



**SURVEYOR / ENGINEER:**  
BDS TECHNOLOGIES, INC  
11325 PEGASUS STREET, S215  
DALLAS, TEXAS 75238

**OWNER:**  
DALLAS INDEPENDENT SCHOOL DISTRICT  
3700 ROSS AVENUE  
DALLAS, TEXAS 75204