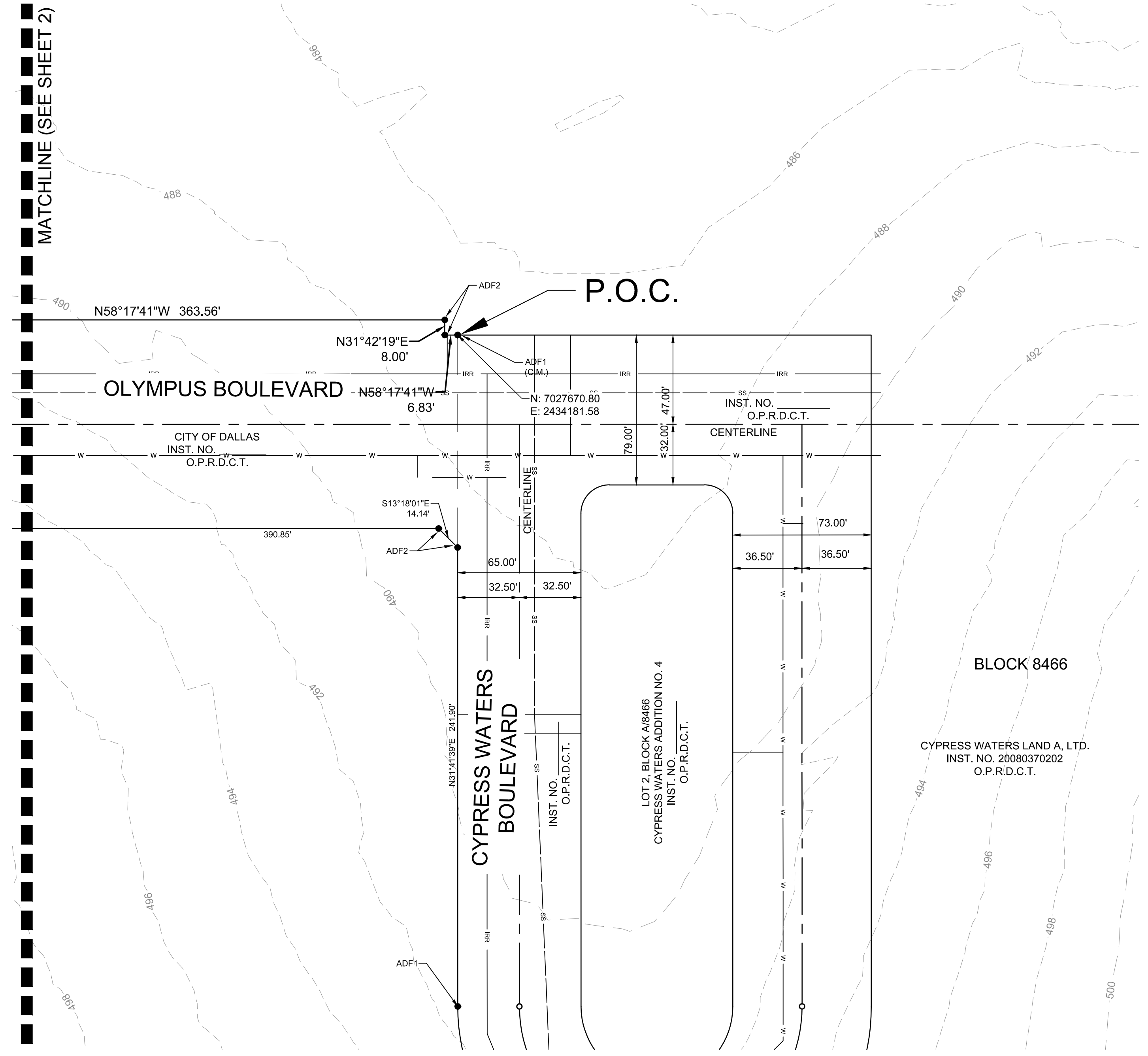
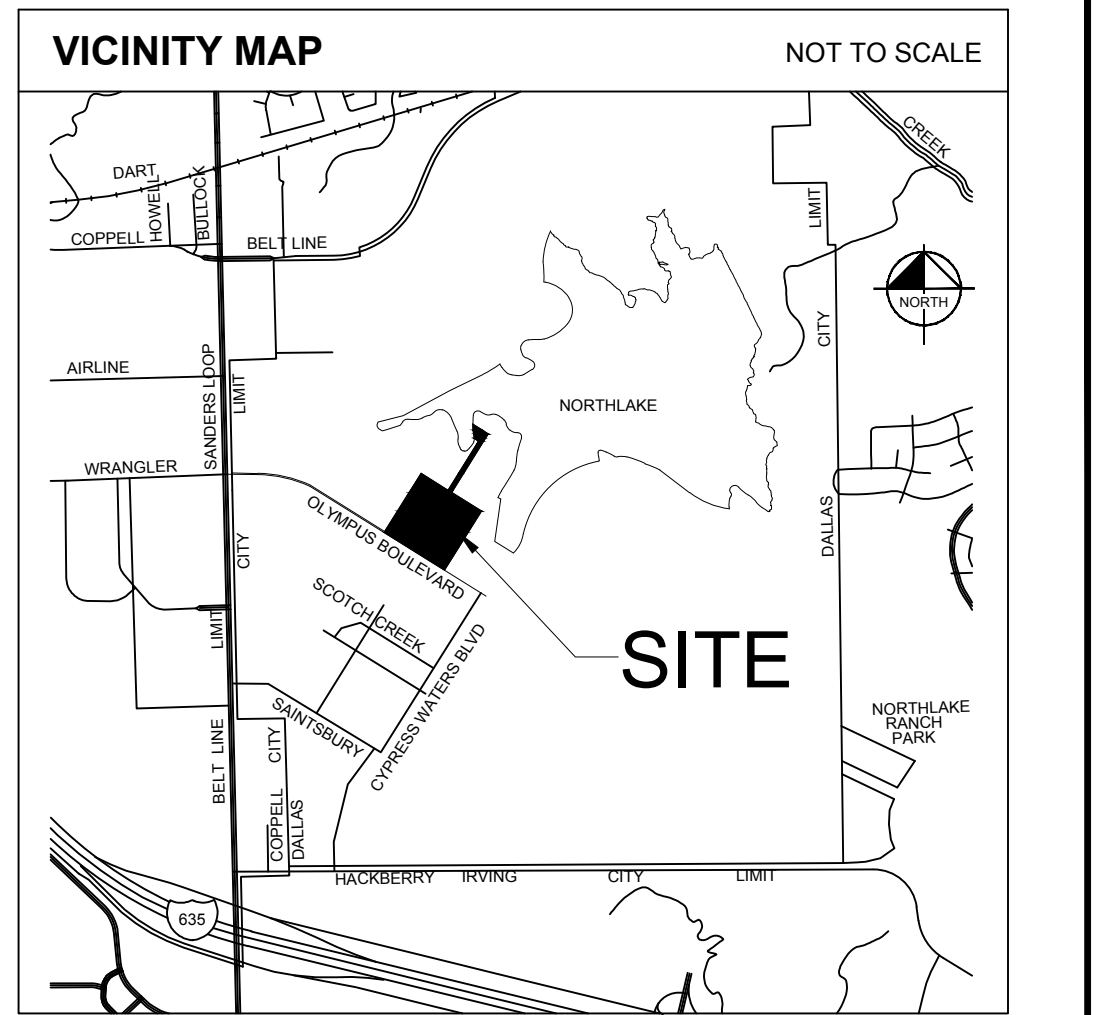
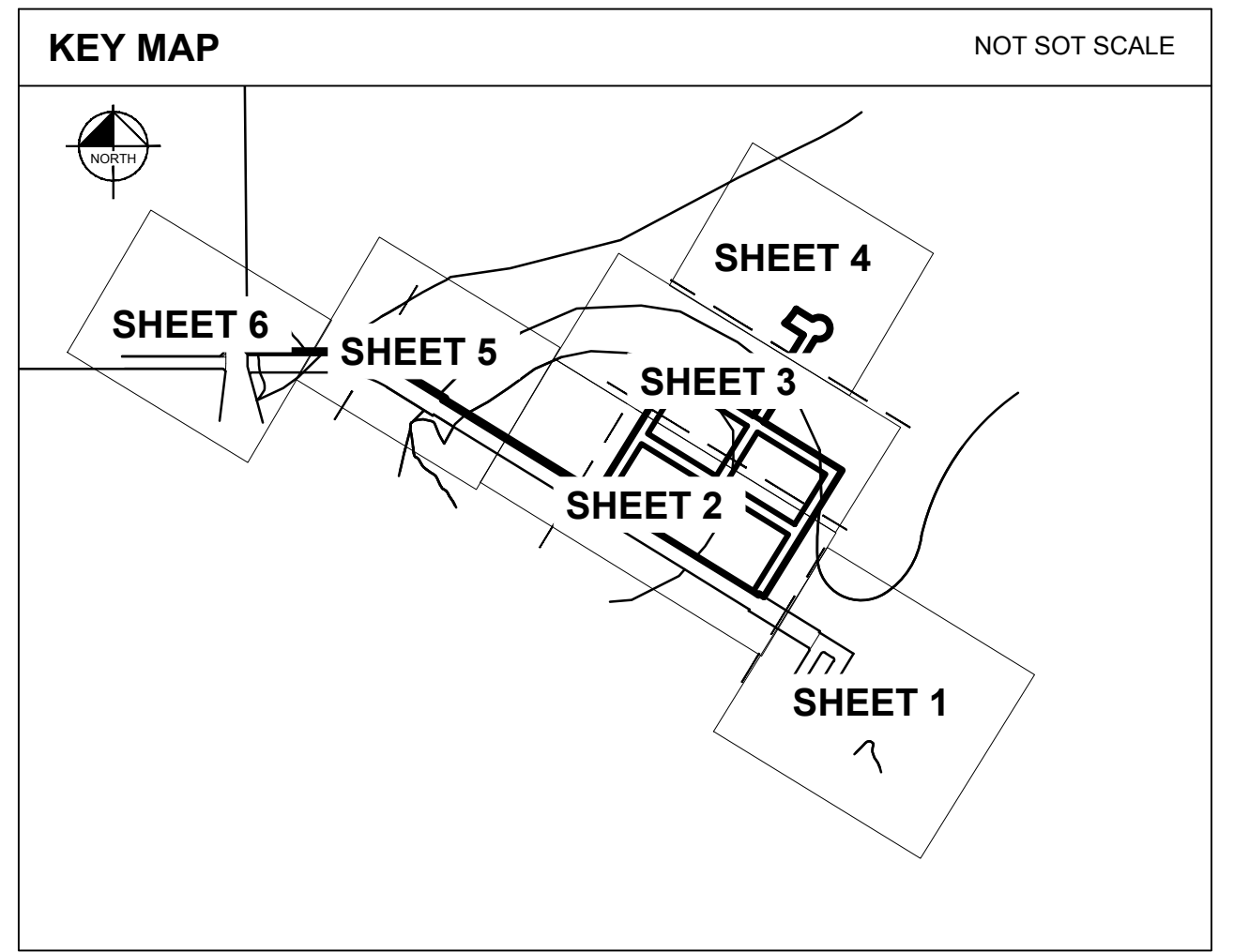


LINE TYPE LEGEND	
[Symbol]	BOUNDARY LINE
[Symbol]	EASEMENT LINE
[Symbol]	BUILDING LINE
[Symbol]	WATER LINE
[Symbol]	SANITARY SEWER LINE
[Symbol]	STORM SEWER LINE
[Symbol]	GAS
[Symbol]	UNDERGROUND GAS LINE
[Symbol]	OVERHEAD UTILITY LINE
[Symbol]	UNDERGROUND ELECTRIC LINE
[Symbol]	UNDERGROUND TELEPHONE LINE
[Symbol]	FENCE
[Symbol]	CONCRETE PAVEMENT
[Symbol]	ASPHALT PAVEMENT

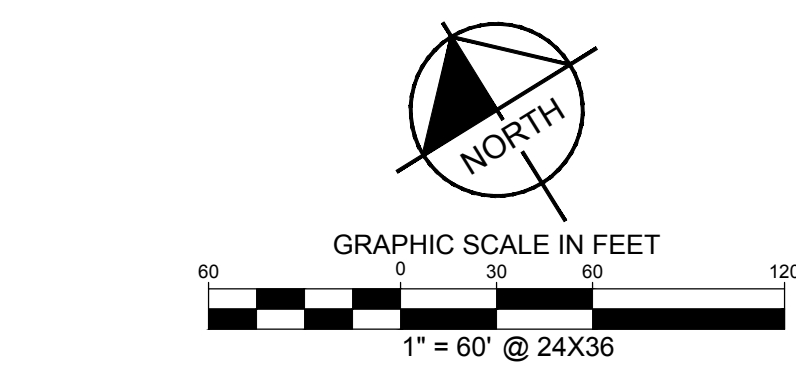


LEGEND:

- Δ = DELTA ANGLE OR CENTRAL ANGLE
- P.O.B. = POINT OF BEGINNING
- P.O.C. = POINT OF COMMENCING
- IRFC = IRON ROD WITH CAP FOUND
- C.M. = CONTROLLING MONUMENT
- D.R.D.C.T. = DEED RECORDS OF DALLAS COUNTY, TEXAS
- O.P.R.D.C.T. = OFFICIAL PUBLIC RECORDS, DALLAS COUNTY, TEXAS
- INST. NO. = INSTRUMENT NUMBER
- ADF1 = 5/8" IRON ROD WITH 3-1/2" ALUMINUM DISK STAMPED "CYPRESS WATERS NO. 4 ADDITION, RPLS NO. 5336" FOUND
- ADF2 = 5/8" IRON ROD WITH 3-1/2" ALUMINUM DISK STAMPED "CYPRESS WATERS NO. 6 ADDITION, KHA" FOUND
- ADS = 5/8" IRON ROD WITH 3-1/2" ALUMINUM DISK STAMPED "CYPRESS WATERS N.P. PUMP STA. ADDN, KHA" SET

GENERAL NOTES:

1. BEARING SYSTEM BASED ON THE TEXAS COORDINATE SYSTEM OF 1983, NORTH CENTRAL ZONE (4202), NORTH AMERICAN DATUM OF 1983.
2. LOT TO LOT DRAINAGE WILL NOT BE ALLOWED WITHOUT ENGINEERING SECTION APPROVAL.
3. ALL ABSTRACT LINES SHOWN HEREON ARE APPROXIMATE SURVEY LINE LOCATIONS.
4. THE COORDINATES SHOWN HEREON ARE TEXAS STATE PLANE COORDINATE SYSTEM, NORTH CENTRAL ZONE, NORTH AMERICAN DATUM OF 1983 ON GRID COORDINATE VALUES, NO SCALE AND NO PROJECTION.
5. THE PURPOSE OF THIS PLAT IS TO CREATE FIVE LOTS.



**PRELIMINARY PLAT
CYPRESS WATERS
NO. 7 ADDITION**

LOT 1, BLOCK C/8466, LOT 1, BLOCK D/8466,
LOT 1, BLOCK E/8466, LOT 1, BLOCK F/8466,
LOT 1, BLOCK G/8466
BEING 22.5664 ACRES SITUATED IN THE
NANCY COUSEY SURVEY, ABSTRACT NO. 318
G.W. LAWS SURVEY, ABSTRACT NO. 843
CITY OF DALLAS, DALLAS COUNTY, TEXAS
CITY PLAN FILE NO. S156-137
ENGINEERING FILE NO. 311T-9027

Kimley»Horn					
12750 Merit Drive, Suite 1000 Dallas, Texas 75251			FIRM # 10115500		Tel. No. (972) 770-1300 Fax No. (972) 239-3820
Scale 1" = 60'	Drawn by SRD	Checked by DAB	Date Mar. 2016	Project No. 063973033	Sheet No. 1 OF 6

OWNER:
CITY OF COPPELL
255 PARKWAY BOULEVARD
COPPELL, TX 75019
PH: 972-462-0022
CONTACT:

OWNER:
CW SHORELINE LAND, LTD.
1722 ROUTH ST., SUITE 1313
DALLAS, TX 75201
PH: 214-270-1000
CONTACT: KEN MABRY

ENGINEER AND SURVEYOR:
KIMLEY-HORN AND ASSOC., INC.
12750 MERIT DRIVE, SUITE 1000
DALLAS, TEXAS 75251
PH: 972-770-1300
CONTACT: BRAD MOSS, P.E.
BRAD.MOSS@KIMLEY-HORN.COM