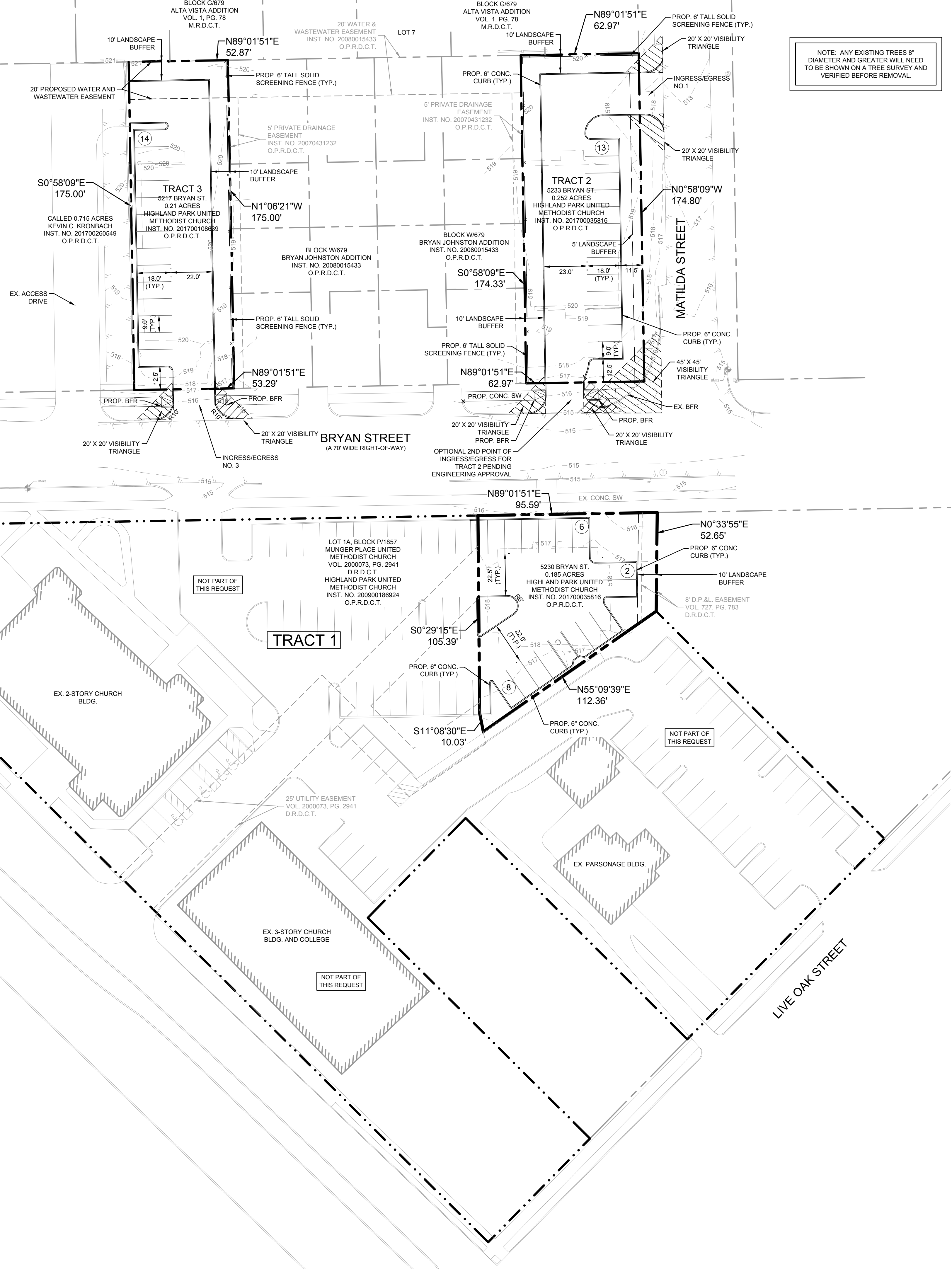
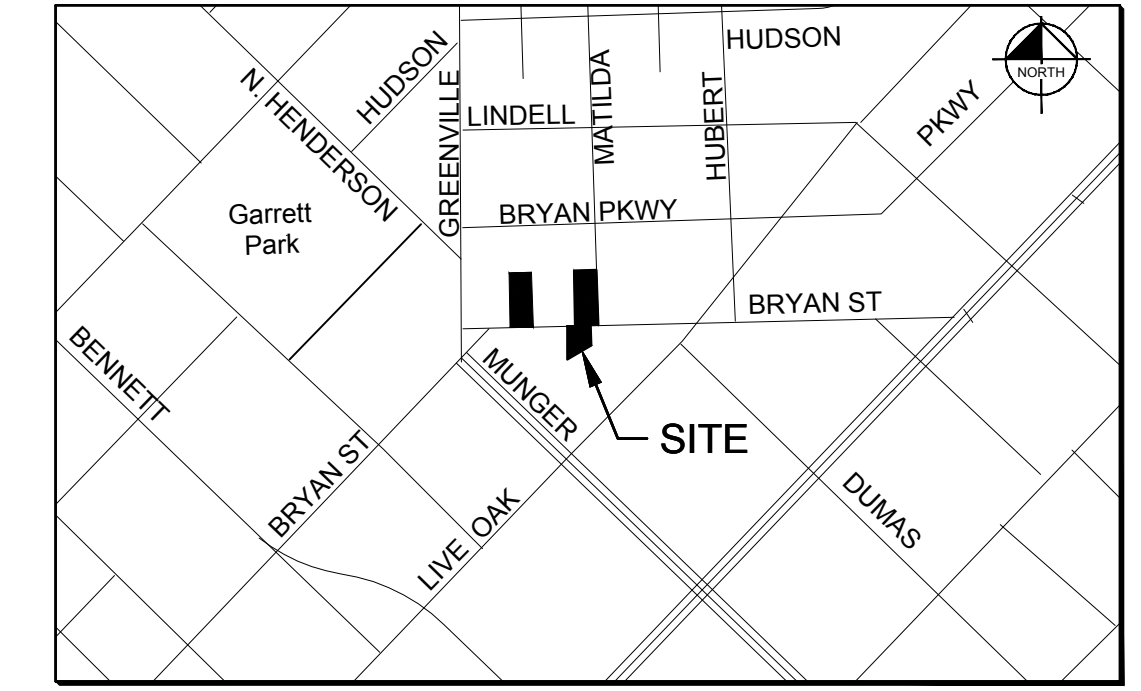
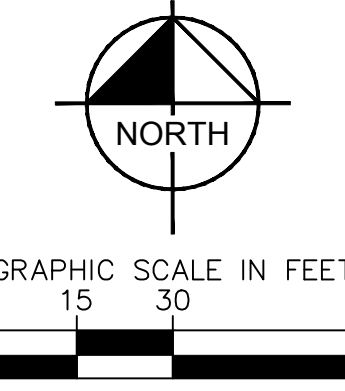


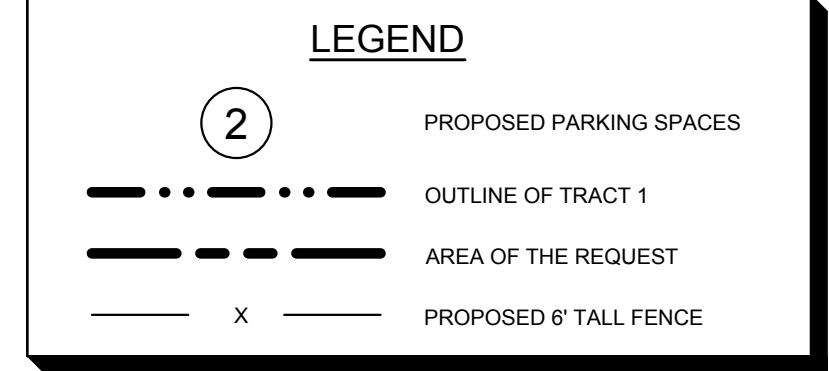
GREENVILLE AVENUE



NOTE: ANY EXISTING TREES 8" DIAMETER AND GREATER WILL NEED TO BE SHOWN ON A TREE SURVEY AND VERIFIED BEFORE REMOVAL.



VICINITY MAP
N.T.S.



5217 BRYAN ST. - TRACTS 1, 2, & 3 PARKING SUMMARY		
TRACT	LAND USE	PROPOSED
1	SURFACE PARKING	16
2	SURFACE PARKING	13
3	SURFACE PARKING	14
TOTAL		43

**DEVELOPMENT PLAN
PORTION OF TRACT 1 & ALL OF
TRACT 2 AND 3
PD NO. 931, DALLAS, TEXAS**

This Development Plan is only for Tracts 1, 2 & 3
The Area between the Property lines and the Street Curbs,
The Tabular Information, Notes and Typical Planting Sections
Are part of this Development Plan.
All other graphic illustrations are for Information Only
And are not part of the Development Plan

DATE ISSUED: APRIL 24, 2018
CASE NUMBER: D178-010