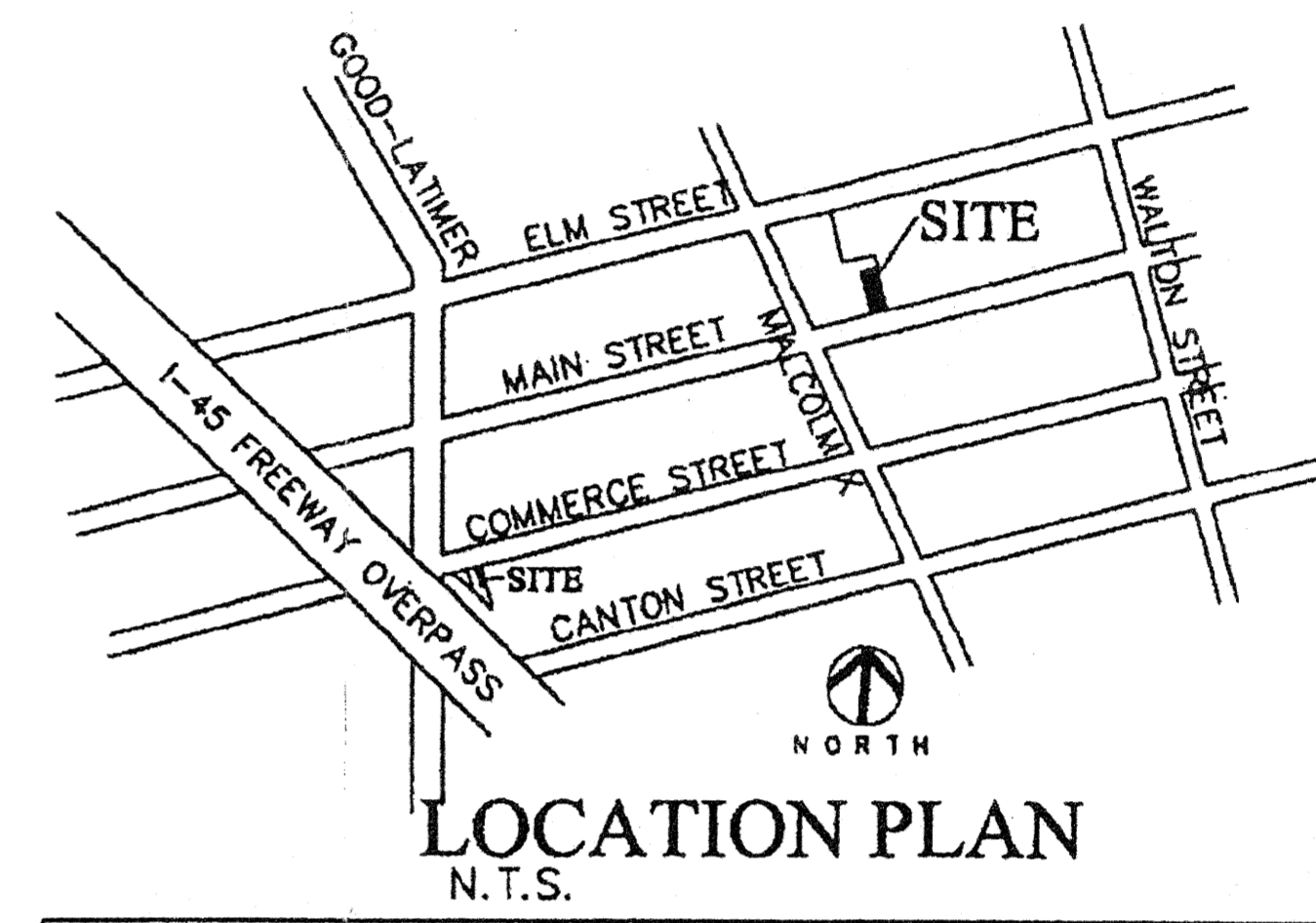
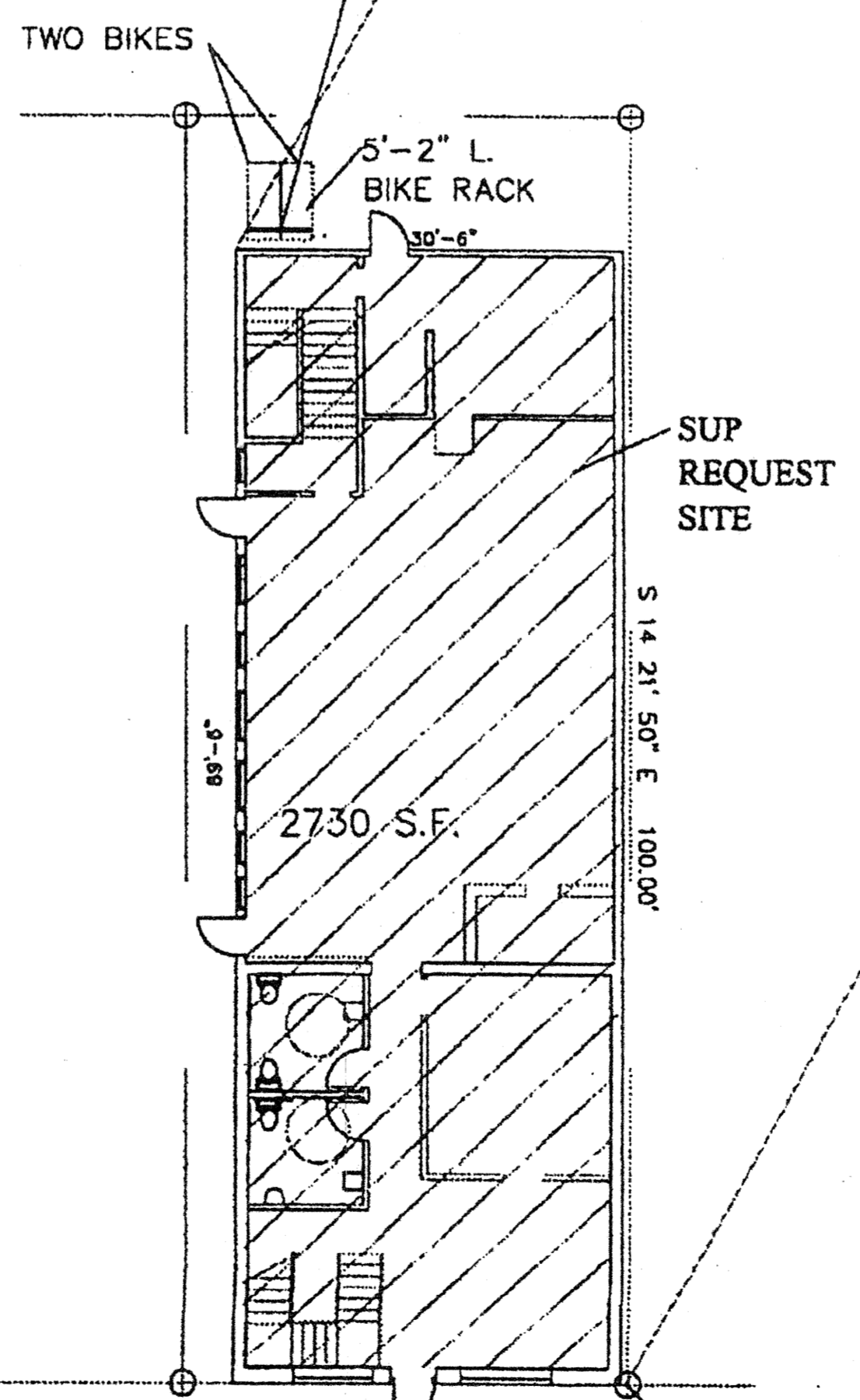
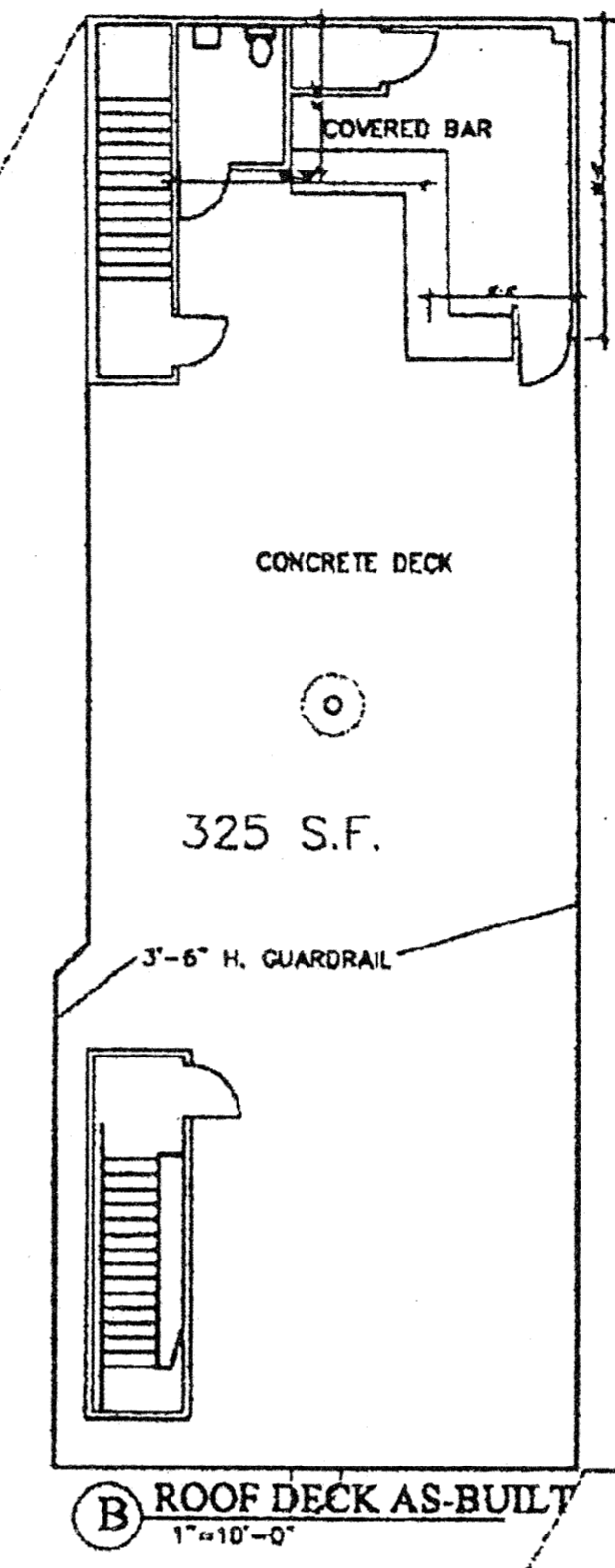
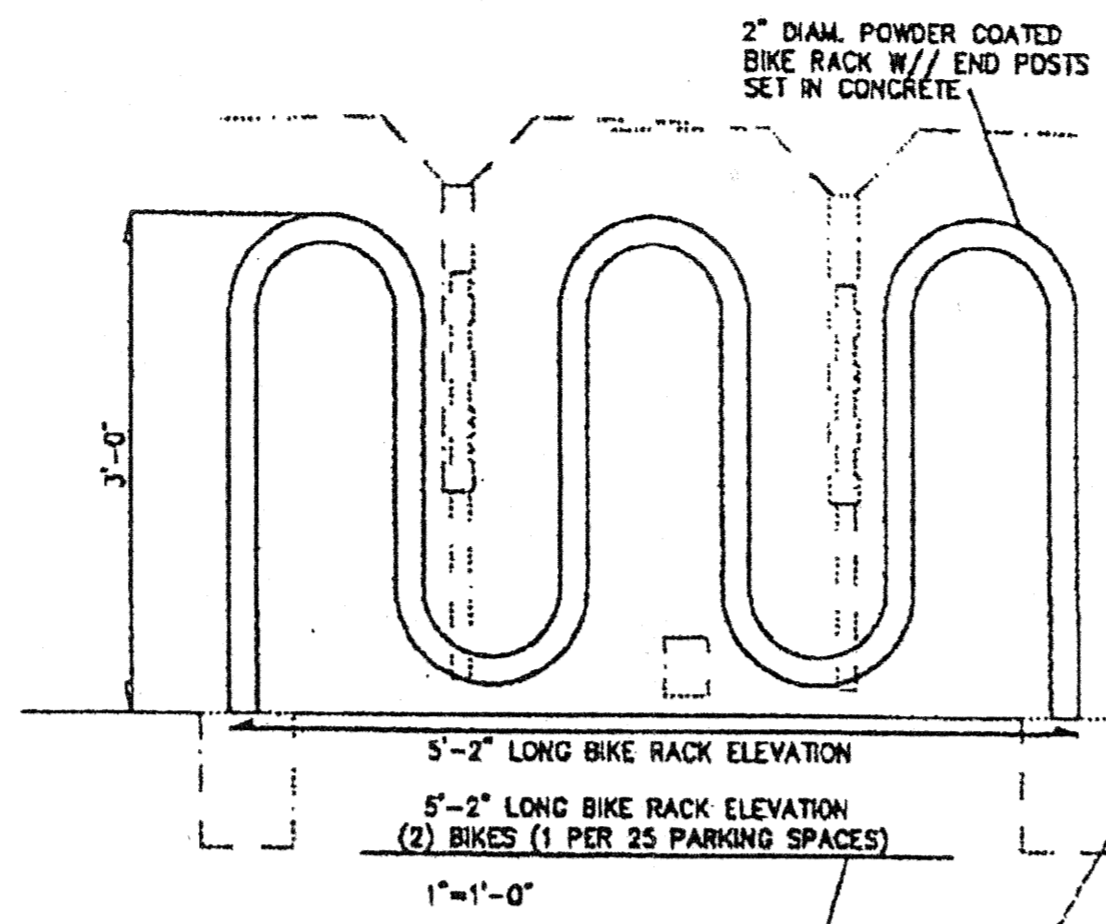


ELM STREET

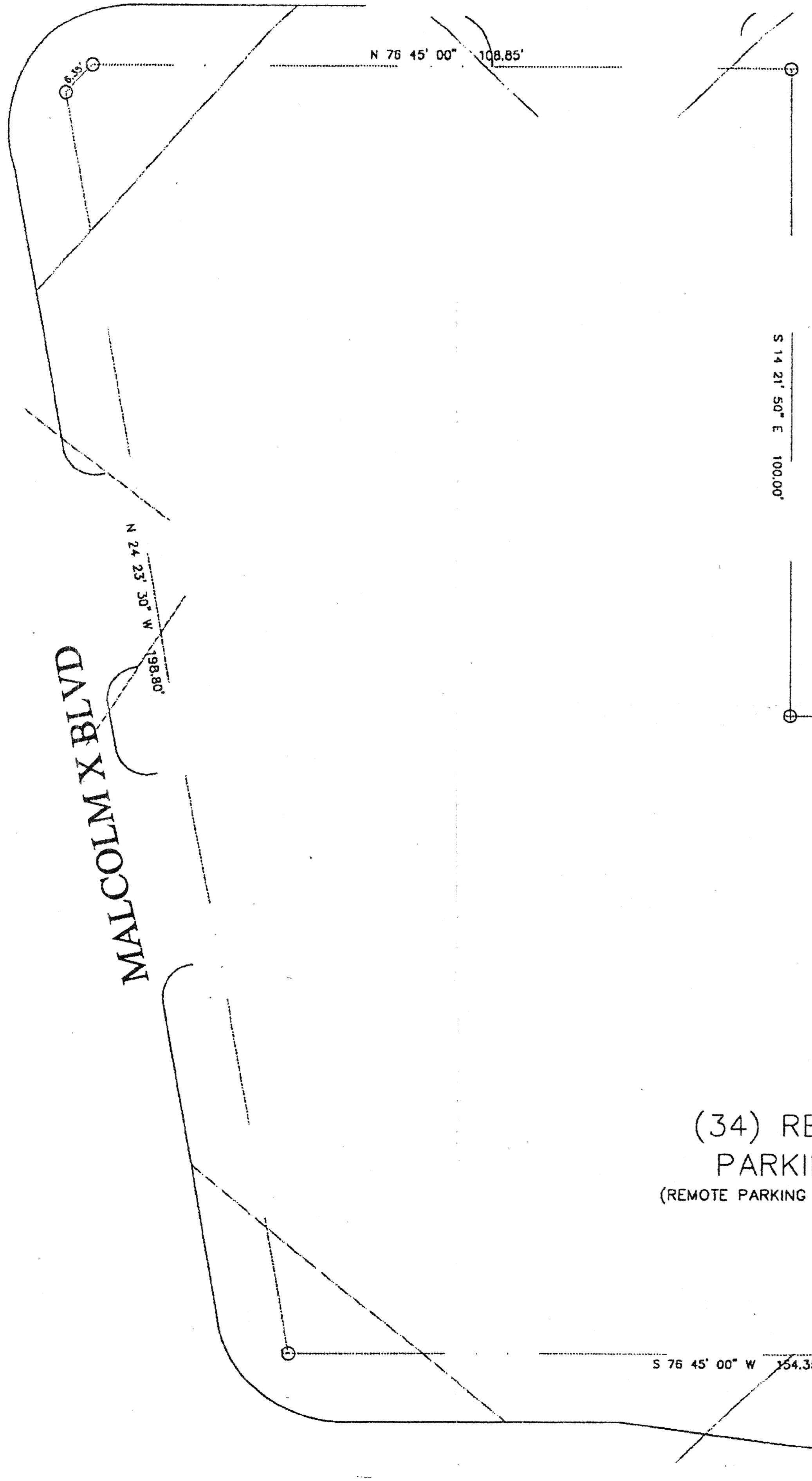
DCD
 DESIGN COLLABORATIVE DALLAS
 ARCHITECTURE INTERIOR DESIGN
 8722 NORTHPORT DRIVE DALLAS, TEXAS 75230
 jddekker56@gmail.com 214-546-4747



SCALE 0' 5' 15' 40'	NORTH
DATE: 07/18/14	
SITE PLAN- 2911 MAIN STREET, DEEP ELLUM, DALLAS TX.	
USES-BAR, TAVERN OR LOUNGE; COMMERCIAL AMUSEMENT (INSIDE) AND DANCE HALL	
GROUND FLOOR AREA = 2730 S.F.	
ONE STORY BUILDING, 19'-0" H.	
SECOND FLOOR ROOF BAR / STAIRS = 325 S.F.	
TOP OF SECOND FLOOR COVERED BAR/STAIRS - 28'-0" H.	
TOTAL S.F. = 3055 S.F.	
PARKING: DANCE FLOOR 100 S.F. @ 1/25 = 4 SPACES BAR/DANCE HALL 2955 S.F. @ 1/100 = 30 SPACES PARKING REQUIRED = 34 SPACES + (2) BICYCLE SPACES PURSUANT TO 51A-4.333	
ZONING DISTRICT : PD 269 (DEEP ELLUM)	
PATIO RAIL HEIGHT = 3'-6" HIGH	
FRONT BUILDING SET BACK- 0'-0"	
SIDE YARD SETBACK-0'-0"	



(34) REQ'D. PARKING
 (REMOTE PARKING AGREEMENT)



MAIN STREET

Z150-192