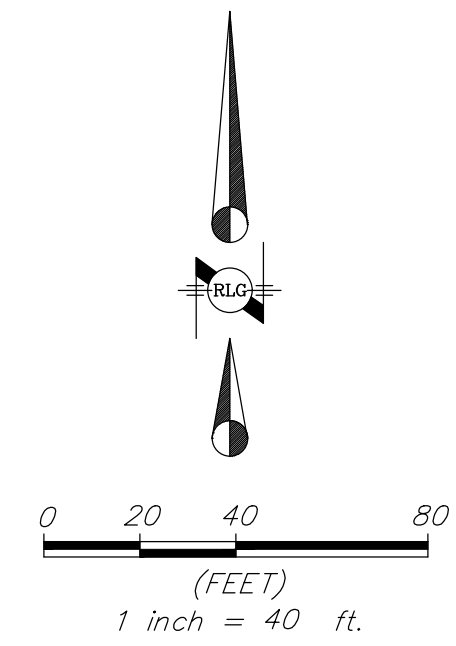


BLOCK 1/5409
OLD TOWN II ADDITON
VOLUME 4297, PAGE 220

BLOCK 1/5409
OLD TOWN ADDITON
VOLUME 69254, PAGE 2021

EAST LOVERS LANE
(VARIABLE WIDTH RIGHT-OF-WAY)



SITE DATA SUMMARY TABLE

ZONING:	PD 610
USE:	GENERAL MERCHANDISE OR FOOD STORE GREATER THAN 3500 SF
LOT AREA:	418,176 SF (9.6 ACRES)
BUILDING BREAKDOWN:	
FLOOR AREA:	96,085 SF
FLOOR AREA RATIO:	0.23:1
LOT COVERAGE:	19.33% (80,839 SF)
PARKING BREAKDOWN:	
PARKING PROVIDED:	508 SPACES
HANDICAP PARKING PROVIDED:	16 SPACES
TOTAL PARKING SPACES:	524 SPACES
PARKING SPACE REQUIRED:	385 SPACES
PARKING RATIO PROVIDED:	1 SPACE/250 SF
BICYCLE PARKING PROVIDED:	21 SPACES

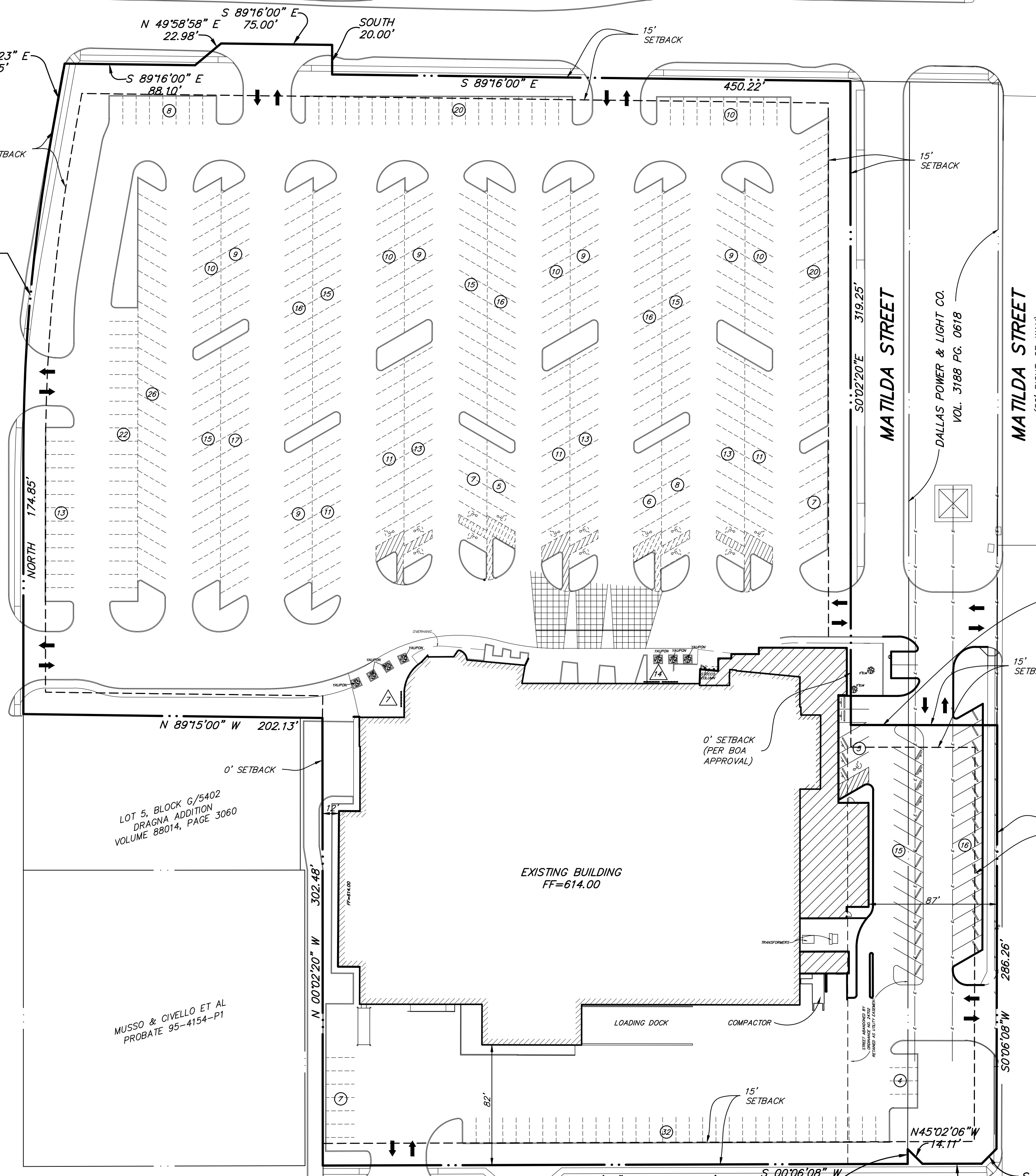
PROPOSED BUILDING ADDITON

$\Delta = 10'09'22''$
 $R = 1223'57''$
 $T = 108'73''$
 $L = 216'89''$
 $CB = N05'14'41''W$
 $CD = 216.60'$

BLOCK 5189
LOVERS, L.T.D.
VOLUME 98218, PAGE 4129

BLOCK 5189
LOVERS, L.T.D.
VOLUME 98218, PAGE 4129

GREENVILLE AVENUE
(100' RIGHT-OF-WAY)



LOT 5, BLOCK G/5402
DRAGNA ADDITION
VOLUME 88014, PAGE 3060

MUSSO & CIVELLO ET AL
PROBATE 95-4154-P1

EXISTING BUILDING
FF=614.00

MILTON DRIVE
(60' RIGHT-OF-WAY)

LOT 1B, BLOCK C/5402
MATILDA LOCK-N-KEY
VOLUME 93007, PAGE 3182

LOT 3 BLOCK 12/5406
REVISED CARUTH MANOR NO. 5
VOLUME 68080, PAGE 1938

LOT 2 BLOCK 12/5406
REVISED CARUTH MANOR NO. 5
VOLUME 68080, PAGE 1938

LOT 3, BLOCK 9/5406
REVISED CARUTH MANOR NO. 5
VOLUME 68080, PAGE 1938

RAYMOND L. GOODSON JR., INC.
CONSULTING ENGINEERS
5445 LA SIERRA DRIVE, SUITE 300, LB 17
DALLAS, TEXAS 75231-4138 214/739-8100
E-MAIL: rlg@rlginc.com FIRM REG: F-493

SHEET NO.
1

DEVELOPMENT PLAN						
HEB CENTRAL MARKET						
LINCOLN L.A.G. ADDITION						
LOT 1A, BLOCK G/5402						
CITY OF DALLAS, TEXAS						
DESIGN	DRAWN	DATE	SCALE	NOTES	FILE	NO.
RLG	RLG	4/11/17	1"=40'	SITE	16	356
JOB NO.	16356	E-FILE		DWG. NO.		