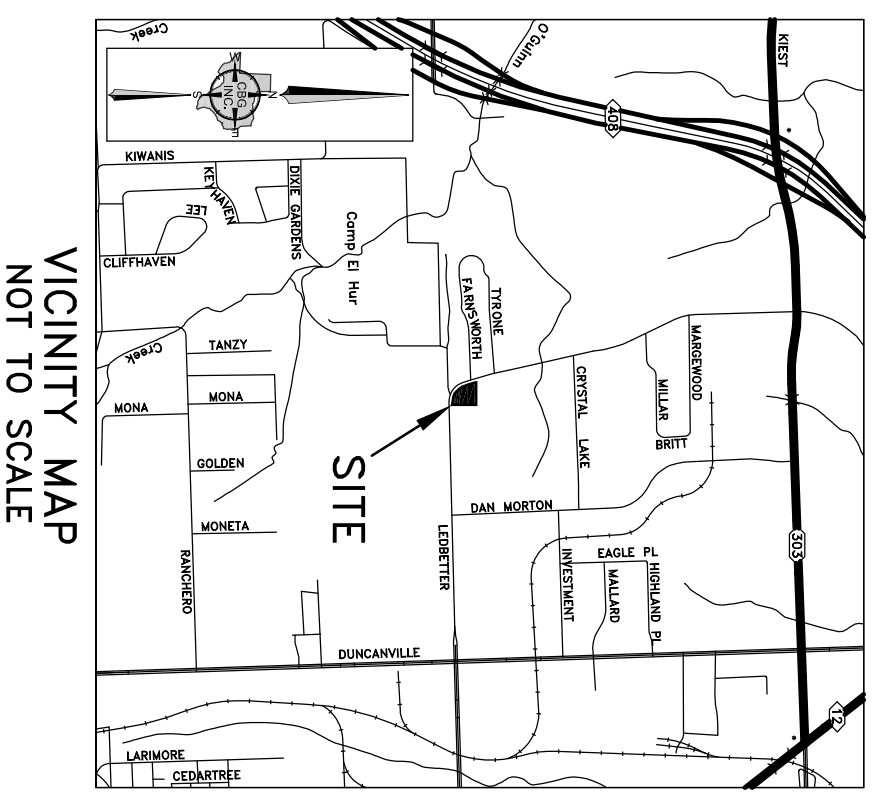


50' 25" 0 50' 100'
SCALE: 1" = 50'



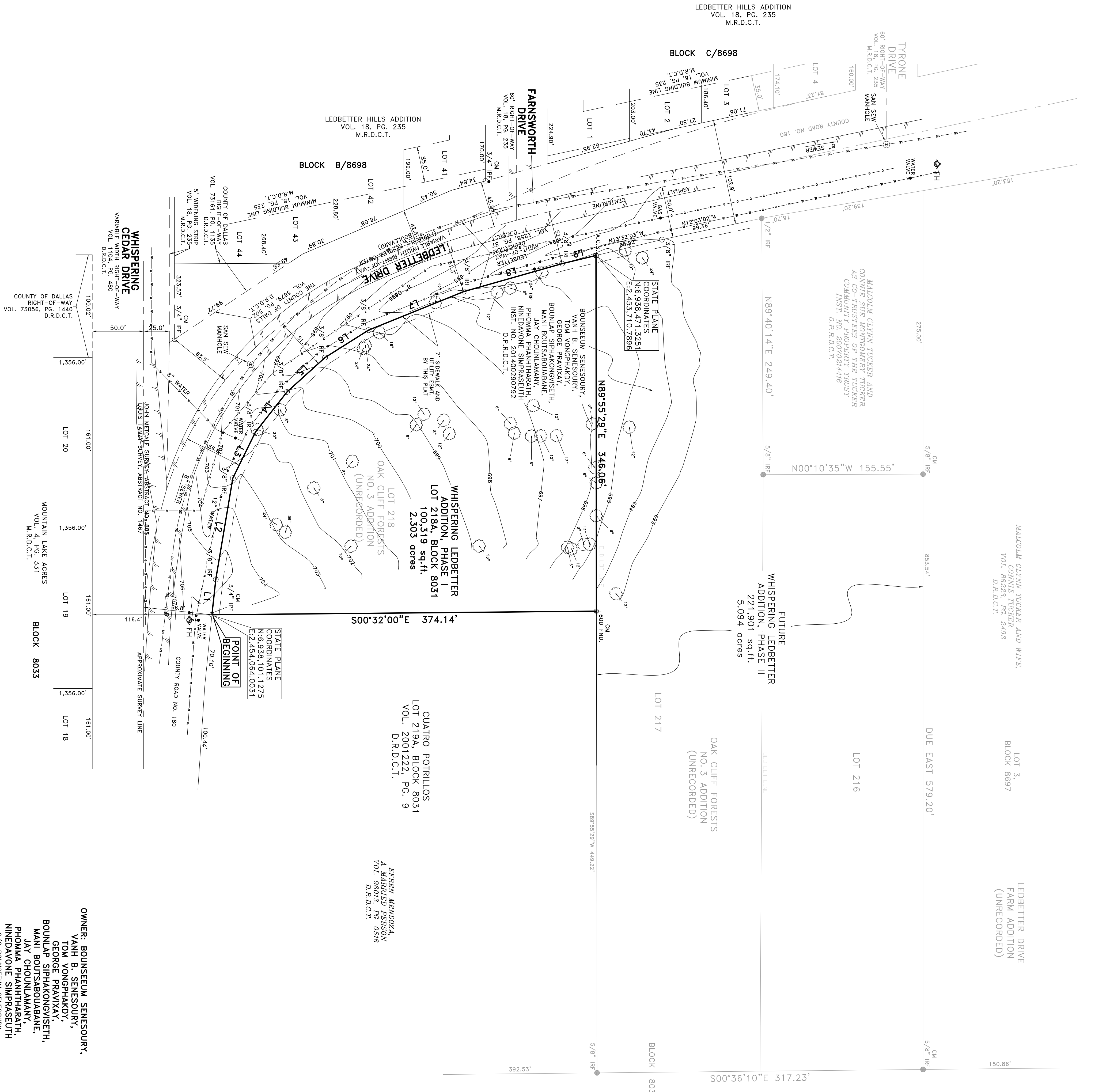
LINE	BEARING	LENGTH
L1	N83°47'42"W	34.58'
L2	N80°25'12"W	99.94'
L3	N63°53'09"W	50.09'
L4	N51°45'15"W	49.52'
L5	N42°09'36"W	49.36'
L6	N32°10'51"W	50.05'
L7	N22°01'45"W	99.88'
L8	N15°52'46"W	99.44'
L9	N13°32'03"W	33.98'

LEGEND:

- CM CONTROLLING MONUMENT
- IRF IRON ROD FOUND
- IPF IRON PIPE FOUND
- 60D 60D NAIL FOUND
- ESMT. EASEMENT
- VOL., Pg. INSTRUMENT NUMBER
- SO.FT. SQUARE FEET
- D.R.D.C.T. DEED RECORDS, DALLAS COUNTY, TEXAS
- M.R.D.C.T. MAP RECORDS, DALLAS COUNTY, TEXAS
- O.P.R.D.C.T. OFFICIAL PUBLIC RECORDS, DALLAS COUNTY, TEXAS
- A.C.S. 3 INCH ALUMINUM DISK STAMPED "WLA" AND "RPLS 5513"
- SET OVER A 1/2 INCH IRON ROD SET FOR CORNER

GENERAL NOTES:

- 1) BEARINGS ARE BASED ON THE NORTH LINE OF DEED RECORDED IN VOLUME 84095, PAGE 1710, DEED RECORDS, DALLAS COUNTY, TEXAS, NORTH 89 DEGREES 40 MINUTES 14 SECONDS EAST.
- 2) THE PURPOSE OF THIS PLAT IS TO CREATE 1 LOT.
- 3) LOT TO LOT DRAINAGE WILL NOT BE ALLOWED WITHOUT ENGINEERING SECTION APPROVAL.
- 4) ANY STRUCTURE NEW OR EXISTING MAY NOT EXTEND ACROSS NEW PROPERTY LINES.
- 5) COORDINATES SHOWN HEREON ARE TEXAS STATE PLANE COORDINATE SYSTEM, NORTH CENTRAL ZONE, NORTH AMERICAN DATUM OF 1983 ON GRID COORDINATE VALUES, NO SCALE AND NO PROJECTION.



MALCOLM GYNN TUCKER AND WIFE,
CONNIE TUCKER
VOL. 86328, PG. 2493
D.R.D.C.T.

LOT 3,
BLOCK 8697

LEDBETTER DRIVE
FARM ADDITION
(UNRECORDED)

M & H METAL SPECIALTIES, INC.,
A TEXAS CORPORATION
VOL. 86028, PG. 3140
D.R.D.C.T.

LOT 221
OAK CLIFF FORESTS
NO. 3 ADDITION
(UNRECORDED)

